



THE ANNUAL REPORT

SEASON

S22

Prague Airport (PRG – LKPR)

Page	Content
	General
2	Table of content, Introduction
3	Headlines
	Analytic section
4	Airport Capacity – Runway
5	Airport Capacity - Terminals and Parking Stands
6	Distributed Historical Slots
7	Slot Allocation (Historical, Modified, New Entrants, New Flights)
8	Allocation and Slot Adjustment
9	ATM Allocation and Seats Capacity and Number of Passengers
10	Total ATM Analysis
11	Passenger ATM Seats Capacity Analysis
12	Terminal Analysis
13	Aircraft Size Analysis
14	Seasonality
15	Typical Week Histogram – Runway Allocation R60/10
17	Typical Week Histogram – Runway Movements Allocation R10/5 (EOS)
19	Typical Week Histogram – Passengers - Arrival (T60/10) – Terminal T1 Non-Schengen
21	Typical Week Histogram – Passengers - Departure (T60/10) – Terminal T1 Non-Schengen
23	Typical Week Histogram – Passengers - Arrival (T60/10) – Terminal T2 Schengen
25	Typical Week Histogram – Passengers - Departure (T60/10) – Terminal T2 Schengen
27	Glossary
	Local information and data
28	Slot mobility – transfers/exchanges Monitoring report – misuse, late handback, sanctions, exemption 14.1 Coordination committee
	Report End
29	Conclusion

Introduction

This report contains the general total data for S22 season. Time UTC.

This report refers to Vaclav Havel Airport Prague.

It is Level 3 airport, IATA/ICAO: PRG/LKPR

The coordination software used: **Score, ver. 6.12.5.73**

The online coordination is in use.

The coordination process is conducted in full compliance with EU Reg. 95/93, 793/2004, IATA Worldwide Scheduling Guidelines, IATA Standard Schedules Information Manual and Czech Law, which says that Slot Coordination Czech Republic is delegated to achieve of Coordination function according to decision of the Civil Aviation Authority Czech Republic in accordance with the paragraph No.32, part 1 and 2 of Law No. 49/1997, about Civil Aviation and in accordance with Law No. 455/1991.

Disclaimer

No warranty whether expressed or implied as to the completeness, accuracy, fitness for purpose, or satisfactory quality is given by Slot Coordination Czech Republic regarding the information in this report, which is provided by third parties. Accordingly, Slot Coordination Czech Republic excludes all liability with regard to such data. The contents of this report may not be reproduced without the written consent of Slot Coordination Czech Republic

Headlines

	S22 EOS	S22/S21 EOS	S21 EOS	S22 SOS	S22 SAL	S22 SHL
Total Air Transport Movements (TATM)	66 665	174,6%	38 191	71 959	109 099	85 918
Passenger Air Transport Movements (PATM)	53 136	203,9%	26 058	69 952	106 543	84 478
Cargo Air Transport Movements (CATM)	1 580	82,4%	1 918	1 627	2 542	1 426
Other Air Transport Movements (OATM)	1 841	191,0%	964	242	14	14
GA/BA Air Transport Movements (GABA)	10 108	109,3%	9 251	138	0	0
Total PATM Seats Capacity	9 237 226	209,4%	4 412 074	12 256 706	18 350 471	
Average Seats per PATM	173,8	102,7%	169,3	175,2	172,2	
Percentage of allocated slots cleared as requested				99,3%	87,2%	
Number of Passengers all Season	7 790 312	252,2%	3 088 675			

Calendar of Coordination Activities S22 Season

SHL Deadline	13SEP 2021
Initial Submission Deadline	07OCT 2021
SAL Deadline	04NOV 2021
IATA Slot Conference	16 – 19NOV 2021 (virtual)
Series Return Deadline	15JAN 2022
Historics Baseline Date	31JAN 2022
Start of Season	27MAR 2022
End of Season	29OCT 2022

S22 scheduling season ran from Sunday 27MAR 2022 to Saturday 29OCT 2022 (217 days)

S21 scheduling season ran from Sunday 28MAR 2021 to Saturday 30OCT 2021 (217 days)

Declared Airport Capacity

Runway Capacity

S22					Change: S22 vs. S21			S21				
Periods		10mins						10mins			Periods	
Time (UTC)		ARR	DEP	Total				ARR	DEP	Total	Time (UTC)	
0:00	0:55	6	6	10	x	x	x	6	6	10	0:00	0:55
1:00	1:55	6	6	10	x	x	x	6	6	10	1:00	1:55
2:00	2:55	6	6	10	x	x	x	6	6	10	2:00	2:55
3:00	3:55	6	6	10	x	x	x	6	6	10	3:00	3:55
4:00	19:55	6	6	10	x	x	x	6	6	10	4:00	19:55
20:00	20:55	6	6	10	x	x	x	6	6	10	20:00	20:55
21:00	21:55	6	6	10	x	x	x	6	6	10	21:00	21:55
22:00	22:55	6	6	10	x	x	x	6	6	10	22:00	22:55
23:00	23:55	6	6	10	x	x	x	6	6	10	23:00	23:55

Periods		60mins						60mins			Periods	
Time (UTC)		ARR	DEP	Total				ARR	DEP	Total	Time (UTC)	
0:00	1:55		0								0:00	1:55
4:00	19:55	33	33	46	x	x	x	33	33	46	4:00	19:55

Periods		480mins						480mins			Periods	
Time (UTC)		Total						Total			Time (UTC)	
20:00	20:55	48**)			x			48			20:00	20:55
21:00	21:55										20:00	21:55
22:00	22:55										22:00	22:55
23:00	23:55										23:00	23:55
0:00	0:55										0:00	0:55
1:00	1:55										1:00	1:55
2:00	2:55										2:00	2:55
3:00	3:55	3:00	3:55									

** Take-offs and landings are only permitted for aircraft with an MTOW of less than 45t or the aircraft types with an MTOW 45t and higher listed in the "List of Aircrafts Permitted for Night Operation"

Each particular aircraft is obliged to comply with standards for being listed in one of noise categories from 1 to 9!

List of Aircrafts Permitted for Night Operation (according to the IATA code)

141, 142, 143, 146, 14F, 14X, 14Y, 14Z,
 221, 223, 290, 295, 318, 319, 31N, 320, 32N, 32Q, 321, 32A, 32B, 32C, 32D, 332, 333, 338, 339, 342, 343, 345, 346, 351, 359,
 380, 388
 717, 734, 735, 736, 738, 739, 73C, 73E, 73G, 73H, 73J, 73W, 7M1, 7M7, 7M8, 7M9, 7S8, 74H, 74N, 752, 753, 75M, 75T, 75W,
 763, 764, 76W, 772, 773, 77L, 77W, 781, 788, 789,
 AB6, AR1, AR7, AR8, ARJ, CCX, E90, E95, GJ6, SU1, SU7, SU9

Declared Airport Capacity

Terminal Capacity

S22			Change: S22 vs. S21		S21		
Period		60mins		60mins	Period		
Terminal	Constraint				Constraint	Terminal	
Terminal T1 <i>Non-Schengen</i>	Gates	22	x	22	Gates	Terminal T1 <i>Non-Schengen</i>	
	PAX flow	ARR	1900	x	1900		ARR
		DEP	1900	x	1900		DEP
		Total	3800	x	3800		Total
Terminal T2 <i>Schengen</i>	Gates	28	x	28	Gates	Terminal T2 <i>Schengen</i>	
	PAX flow	ARR	3500	x	3500		ARR
		DEP	2500	x	2500		DEP
		Total	6000	x	6000		Total
Terminal T3 <i>GA/BA Special</i>	Gates	1	x	1	Gates	Terminal T3 <i>GA/BA Special</i>	
	PAX flow	ARR	120	110	10		ARR
		DEP	70	60	10		DEP
		Total	190	170	20		Total

Parking Stands

S22		Change: S22 vs. S21		S21	
Period	60mins		60mins	Period	
Wing span	Number of stands		Number of stands	Wing span	
total	51	x	51	total	
up to 80m	1	x	1	up to 80m	
from up to 65m	5	1	4	from up to 65m	
from up to 52m	2	1	1	from up to 52m	
from up to 38m	1	x	1	from up to 38m	
up to 36m	35	-2	37	up to 36m	
up to 34,5m	2	x	2	up to 34,5m	
up to 29 m	5	x	5	up to 29 m	

SHL S22 - ATM Allocation by Operator

Comparison between S22 SHL vs. S21 SHL

Operator	FULL SEASON ALLOCATION			
	SHL S22 ATMs	SHL S21 ATMs	+/- change	S22 Rank
Aegean Airlines	598	506	92	27
Aer Lingus	422	352	70	40
Aeroflot	2 604	2 604	0	6
Air Arabia	248	248	0	51
Air Baltic	310	434	-124	47
Air Cairo	124	124	0	63
Air Canada	304	136	168	48
Air France	1 674	1 634	40	11
Air Malta	186	186	0	59
Air Serbia	502	566	-64	31
Air Transat	76	76	0	69
Alitalia	434	432	2	35
American Airlines	434	618	-184	35
ASL Airlines (CARGO)	558	558	0	30
Austrian Airlines	2 106	1 984	122	8
Azerbaijan Airlines	46	46	0	71
BA Cityflyer	372	372	0	42
Bamboo Airways	160	160	0	60
Belavia	434	434	0	35
Blue Air	254	0	254	50
Blue Bird Airways	60	60	0	70
British Airways	2 046	2 146	-100	9
Brussels Airlines	1 286	1 082	204	15
Bulgaria Air	314	292	22	45
Bulgarian Air Charter	202	320	-118	58
Corendon Airlines	90	228	-138	68
Croatia Airlines	234	234	0	57
Cyprus Airways	124	124	0	63
Czech Airlines	11 563	17 104	-5 541	2
Delta Air Lines	366	366	0	44
EasyJet	5 334	5 984	-650	4
Egyptair	102	140	-38	67
El Al Israel Airlines	682	682	0	24
Emirates	434	434	0	35
Enter Air	132	276	-144	62
Eurowings AG	1 278	1 368	-90	16
FedEx (CARGO)	248	248	0	51
Finnair	898	898	0	18
flydubai	434	434	0	35
Georgian Airways	0	186	-186	73
China Eastern Airlines	248	248	0	51
Iberia	716	580	136	23
Jet2.com	822	664	158	21
KLM	1 736	1 736	0	10
Korean Air	248	248	0	51
LOT Polish Airlines	2 542	2 650	-108	7
Lufthansa	3 906	3 906	0	5
Luxair	248	248	0	51
Norwegian	668	1 438	-770	25
Onur Air	26	90	-64	72
Pegasus Airlines	496	482	14	32
Qatar Airways	868	868	0	18
Qatar Airways (CARGO)	0	122	-122	73
Rossiya Airlines	480	960	-480	34
Ryanair	10 496	9 848	648	3
S7 Airlines	124	196	-72	63
SAS	496	598	-102	32
SCAT Airlines	0	186	-186	73
Sichuan Airlines	124	124	0	63
SkyUp Airlines	394	372	22	41
Smartwings	13 219	16 419	-3 200	1
Sunexpress Aviation	150	150	0	61
SWISS	1 622	1 674	-52	13
TAP Portugal	594	563	31	28
TAROM	372	372	0	28
Transavia	282	282	0	49
Transavia France	248	248	0	51
Tunisair	0	78	-78	73
Turkish Airlines	1 302	1 302	0	14
Turkish Airlines (CARGO)	0	124	-124	73
Ukraine International	372	434	-62	42
United Airlines	312	238	74	46
UPS (CARGO)	620	620	0	26
Ural Airlines	866	1 116	-250	20
Volotea	766	481	285	22
Vueling	1 240	1 460	-220	17
Wizz Air	1 642	902	740	12
TOTAL	85 918	96 103		

SAL S22 - Slot Allocation by Operator

Historical, History Modification, New Flights, New Entrants

Operator	Allocated Slots	Maintain Historics	Modify Historics	New Slots	New Entrant
Aegean Airlines	738	118	310		310
Aer Lingus	658		24		634
Aeroflot	2 604	2 604			
Air Arabia	310			62	248
Air Baltic	310	310			
Air Cairo	124	62	62		
Air Canada	304	84			220
Air France	1 736	372	1 302	62	
Air Malta	124		62	62	
Air Serbia	620	354	186	80	
Air Transat	92		92		
Alitalia	434	434			
Arkia Israel	372			372	
ASL Airlines (CARGO)	558	558			
Austrian Airlines	2 106	618	1 488		
Azerbaijan Airlines	46	46			
BA Cityflyer	372	14			358
Bamboo Airways	160				160
Belavia	434	434			
Blue Air	536		350		186
Blue Bird Airways	134	30	30	74	
British Airways	2 170	1 178	868	124	
Brussels Airlines	1 922	1 454		468	
Bulgaria Air	314	314			
Corendon Airlines	216	90		126	
Cyprus Airways	124	124			
Czech Airlines	17 843	10 789	775	6 279	
Delta Airlines	434	217	217		
EasyJet	5 524	4 014	1 102	36	372
Egyptair	192		192		
El Al	682	310	372		
Emirates	476	42	434		
Enter Air	132	132			
European Air Charter	140	62		78	
Eurowings AG	5 741	348	930	4 463	
FedEx (CARGO)	1 054		248	806	
Finnair	902	902			
Fly Play	330				330
Flydubai	434	217	217		
Flyr	186				186
China Eastern Airlines	248	248			
Iberia	716	624	92		
Israir Airlines	124			124	
Jet2	876	253	573	50	
KLM	2 170	1 736		434	
Korean Air	248	214	34		
LOT	2 604	2 604			
Lufthansa	3 906	3 906			
Luxair	248	62	186		
Norwegian	1 008	366	480	162	
Pegasus Airlines	496	248	248		
Qatar Airways	868	868			
Qatar Airways (CARGO)	124			124	
Rossiya Airlines	480	480			
Ryanair	10 625	5 882	4 619	124	
S7 Airlines	124	62	62		
SAS	646	340	160	146	
SkyUp Airlines	1 386	394		992	
Smartwings	17 828	8 729	4 709	4 390	
SunExpress	278				278
SWISS	1 674	248	1 426		
TAP Portugal	992	1	743		248
TAROM	372	372			
Transavia	282	199	83		
Transavia France	558		248		310
Turkish Airlines	1 302	1 302			
Turkish Airlines (CARGO)	186			186	
Ukraine International	868		372	496	
United Airlines	312				312
UPS (CARGO)	620	620			
Ural Airlines	1 110	866		244	
Volotea	968	503	359	106	
Vueling	1 364	682	558	124	
Wizz Air	1 900	592	1 176	132	
TOTAL	109 099	58 632	25 389	20 926	4 152

SAL S22 - Slot Allocation and Slot Adjustment Distribution by Operator

		SLOT ADJUSTMENTS (MINUTES OFF REQUESTED TIME)														
Operator	Allocated Slots	0	5	10	15	20	25	30	35	40	45	50	55	60-115	>120	No slot allocated
Aegean Airlines	738	91,6%	8,4%	0,0%	0,0%	0,0%	0,0%	0,0%	0,0%	0,0%	0,0%	0,0%	0,0%	0,0%	0,0%	0,0%
Aer Lingus	658	100,0%	0,0%	0,0%	0,0%	0,0%	0,0%	0,0%	0,0%	0,0%	0,0%	0,0%	0,0%	0,0%	0,0%	0,0%
Aeroflot	2 604	100,0%	0,0%	0,0%	0,0%	0,0%	0,0%	0,0%	0,0%	0,0%	0,0%	0,0%	0,0%	0,0%	0,0%	0,0%
Air Arabia	310	80,0%	20,0%	0,0%	0,0%	0,0%	0,0%	0,0%	0,0%	0,0%	0,0%	0,0%	0,0%	0,0%	0,0%	0,0%
Air Baltic	310	100,0%	0,0%	0,0%	0,0%	0,0%	0,0%	0,0%	0,0%	0,0%	0,0%	0,0%	0,0%	0,0%	0,0%	0,0%
Air Cairo	124	100,0%	0,0%	0,0%	0,0%	0,0%	0,0%	0,0%	0,0%	0,0%	0,0%	0,0%	0,0%	0,0%	0,0%	0,0%
Air Canada	304	100,0%	0,0%	0,0%	0,0%	0,0%	0,0%	0,0%	0,0%	0,0%	0,0%	0,0%	0,0%	0,0%	0,0%	0,0%
Air France	1 736	87,5%	0,0%	0,0%	0,0%	0,0%	0,0%	0,0%	0,0%	0,0%	10,8%	0,0%	1,7%	0,0%	0,0%	0,0%
Air Malta	124	100,0%	0,0%	0,0%	0,0%	0,0%	0,0%	0,0%	0,0%	0,0%	0,0%	0,0%	0,0%	0,0%	0,0%	0,0%
Air Serbia	620	93,2%	0,0%	6,8%	0,0%	0,0%	0,0%	0,0%	0,0%	0,0%	0,0%	0,0%	0,0%	0,0%	0,0%	0,0%
Air Transat	92	100,0%	0,0%	0,0%	0,0%	0,0%	0,0%	0,0%	0,0%	0,0%	0,0%	0,0%	0,0%	0,0%	0,0%	0,0%
Alitalia	434	100,0%	0,0%	0,0%	0,0%	0,0%	0,0%	0,0%	0,0%	0,0%	0,0%	0,0%	0,0%	0,0%	0,0%	0,0%
Arkia Israel	372	0,0%	0,0%	0,0%	0,0%	0,0%	0,0%	0,0%	100,0%	0,0%	0,0%	0,0%	0,0%	0,0%	0,0%	0,0%
ASL Airlines (CARGO)	558	100,0%	0,0%	0,0%	0,0%	0,0%	0,0%	0,0%	0,0%	0,0%	0,0%	0,0%	0,0%	0,0%	0,0%	0,0%
Austrian Airlines	2 106	69,1%	20,6%	0,0%	0,0%	0,0%	0,0%	0,0%	0,0%	0,0%	0,0%	1,5%	0,0%	8,8%	0,0%	0,0%
Azerbaijan Airlines	46	100,0%	0,0%	0,0%	0,0%	0,0%	0,0%	0,0%	0,0%	0,0%	0,0%	0,0%	0,0%	0,0%	0,0%	0,0%
BA Cityflyer	372	100,0%	0,0%	0,0%	0,0%	0,0%	0,0%	0,0%	0,0%	0,0%	0,0%	0,0%	0,0%	0,0%	0,0%	0,0%
Bamboo Airways	160	100,0%	0,0%	0,0%	0,0%	0,0%	0,0%	0,0%	0,0%	0,0%	0,0%	0,0%	0,0%	0,0%	0,0%	0,0%
Belavia	434	100,0%	0,0%	0,0%	0,0%	0,0%	0,0%	0,0%	0,0%	0,0%	0,0%	0,0%	0,0%	0,0%	0,0%	0,0%
Blue Air	536	100,0%	0,0%	0,0%	0,0%	0,0%	0,0%	0,0%	0,0%	0,0%	0,0%	0,0%	0,0%	0,0%	0,0%	0,0%
Blue Bird Airways	134	72,4%	17,9%	0,0%	0,0%	9,7%	0,0%	0,0%	0,0%	0,0%	0,0%	0,0%	0,0%	0,0%	0,0%	0,0%
British Airways	2 170	100,0%	0,0%	0,0%	0,0%	0,0%	0,0%	0,0%	0,0%	0,0%	0,0%	0,0%	0,0%	0,0%	0,0%	0,0%
Brussels Airlines	1 922	78,1%	0,0%	0,0%	0,0%	0,0%	0,0%	0,0%	0,0%	0,0%	0,0%	2,5%	0,0%	19,4%	0,0%	0,0%
Bulgaria Air	314	100,0%	0,0%	0,0%	0,0%	0,0%	0,0%	0,0%	0,0%	0,0%	0,0%	0,0%	0,0%	0,0%	0,0%	0,0%
Corendon Airlines	216	100,0%	0,0%	0,0%	0,0%	0,0%	0,0%	0,0%	0,0%	0,0%	0,0%	0,0%	0,0%	0,0%	0,0%	0,0%
Cyprus Airways	124	100,0%	0,0%	0,0%	0,0%	0,0%	0,0%	0,0%	0,0%	0,0%	0,0%	0,0%	0,0%	0,0%	0,0%	0,0%
Czech Airlines	17 843	75,6%	4,7%	0,7%	0,4%	2,1%	0,0%	2,4%	4,7%	2,3%	2,3%	0,0%	2,1%	2,7%	0,0%	0,0%
Delta Air Lines	434	100,0%	0,0%	0,0%	0,0%	0,0%	0,0%	0,0%	0,0%	0,0%	0,0%	0,0%	0,0%	0,0%	0,0%	0,0%
EasyJet	5 524	99,5%	0,0%	0,5%	0,0%	0,0%	0,0%	0,0%	0,0%	0,0%	0,0%	0,0%	0,0%	0,0%	0,0%	0,0%
Egyptair	192	100,0%	0,0%	0,0%	0,0%	0,0%	0,0%	0,0%	0,0%	0,0%	0,0%	0,0%	0,0%	0,0%	0,0%	0,0%
El Al Israel Airlines	682	45,5%	27,3%	0,0%	27,3%	0,0%	0,0%	0,0%	0,0%	0,0%	0,0%	0,0%	0,0%	0,0%	0,0%	0,0%
Emirates	476	100,0%	0,0%	0,0%	0,0%	0,0%	0,0%	0,0%	0,0%	0,0%	0,0%	0,0%	0,0%	0,0%	0,0%	0,0%
Enter Air	132	100,0%	0,0%	0,0%	0,0%	0,0%	0,0%	0,0%	0,0%	0,0%	0,0%	0,0%	0,0%	0,0%	0,0%	0,0%
European Air Charter	140	100,0%	0,0%	0,0%	0,0%	0,0%	0,0%	0,0%	0,0%	0,0%	0,0%	0,0%	0,0%	0,0%	0,0%	0,0%
Eurowings AG	5 741	75,2%	4,3%	2,2%	0,0%	2,2%	0,0%	0,5%	2,7%	4,3%	0,0%	2,2%	0,0%	2,7%	3,8%	0,0%
FedEx (CARGO)	1 054	47,1%	0,0%	0,0%	0,0%	0,0%	11,8%	11,8%	0,0%	0,0%	0,0%	0,0%	0,0%	26,5%	2,9%	0,0%
Finnair	902	100,0%	0,0%	0,0%	0,0%	0,0%	0,0%	0,0%	0,0%	0,0%	0,0%	0,0%	0,0%	0,0%	0,0%	0,0%
Fly Play	330	0,0%	0,0%	0,0%	0,0%	0,0%	100,0%	0,0%	0,0%	0,0%	0,0%	0,0%	0,0%	0,0%	0,0%	0,0%
flydubai	434	100,0%	0,0%	0,0%	0,0%	0,0%	0,0%	0,0%	0,0%	0,0%	0,0%	0,0%	0,0%	0,0%	0,0%	0,0%
Flyr	186	66,7%	33,3%	0,0%	0,0%	0,0%	0,0%	0,0%	0,0%	0,0%	0,0%	0,0%	0,0%	0,0%	0,0%	0,0%
China Eastern Airline	248	100,0%	0,0%	0,0%	0,0%	0,0%	0,0%	0,0%	0,0%	0,0%	0,0%	0,0%	0,0%	0,0%	0,0%	0,0%
Iberia	716	100,0%	0,0%	0,0%	0,0%	0,0%	0,0%	0,0%	0,0%	0,0%	0,0%	0,0%	0,0%	0,0%	0,0%	0,0%
Israir airlines	124	0,0%	0,0%	0,0%	0,0%	0,0%	0,0%	100,0%	0,0%	0,0%	0,0%	0,0%	0,0%	0,0%	0,0%	0,0%
Jet2.com	876	100,0%	0,0%	0,0%	0,0%	0,0%	0,0%	0,0%	0,0%	0,0%	0,0%	0,0%	0,0%	0,0%	0,0%	0,0%
KLM	2 170	90,0%	10,0%	0,0%	0,0%	0,0%	0,0%	0,0%	0,0%	0,0%	0,0%	0,0%	0,0%	0,0%	0,0%	0,0%
Korean Air	248	100,0%	0,0%	0,0%	0,0%	0,0%	0,0%	0,0%	0,0%	0,0%	0,0%	0,0%	0,0%	0,0%	0,0%	0,0%
LOT Polish Airlines	2 604	100,0%	0,0%	0,0%	0,0%	0,0%	0,0%	0,0%	0,0%	0,0%	0,0%	0,0%	0,0%	0,0%	0,0%	0,0%
Lufthansa	3 906	100,0%	0,0%	0,0%	0,0%	0,0%	0,0%	0,0%	0,0%	0,0%	0,0%	0,0%	0,0%	0,0%	0,0%	0,0%
Luxair	248	75,0%	0,0%	25,0%	0,0%	0,0%	0,0%	0,0%	0,0%	0,0%	0,0%	0,0%	0,0%	0,0%	0,0%	0,0%
Norwegian	1 008	95,1%	2,9%	2,0%	0,0%	0,0%	0,0%	0,0%	0,0%	0,0%	0,0%	0,0%	0,0%	0,0%	0,0%	0,0%
Pegasus Airlines	496	100,0%	0,0%	0,0%	0,0%	0,0%	0,0%	0,0%	0,0%	0,0%	0,0%	0,0%	0,0%	0,0%	0,0%	0,0%
Qatar Airways	868	100,0%	0,0%	0,0%	0,0%	0,0%	0,0%	0,0%	0,0%	0,0%	0,0%	0,0%	0,0%	0,0%	0,0%	0,0%
Qatar Airways (CARGO)	124	75,0%	25,0%	0,0%	0,0%	0,0%	0,0%	0,0%	0,0%	0,0%	0,0%	0,0%	0,0%	0,0%	0,0%	0,0%
Rossiya Airlines	480	100,0%	0,0%	0,0%	0,0%	0,0%	0,0%	0,0%	0,0%	0,0%	0,0%	0,0%	0,0%	0,0%	0,0%	0,0%
Ryanair	10 625	93,6%	0,9%	0,3%	0,0%	0,6%	0,3%	0,0%	0,6%	0,3%	0,0%	0,6%	0,0%	2,0%	0,9%	0,0%
S7 Airlines	124	100,0%	0,0%	0,0%	0,0%	0,0%	0,0%	0,0%	0,0%	0,0%	0,0%	0,0%	0,0%	0,0%	0,0%	0,0%
SAS	646	100,0%	0,0%	0,0%	0,0%	0,0%	0,0%	0,0%	0,0%	0,0%	0,0%	0,0%	0,0%	0,0%	0,0%	0,0%
SkyUp Airlines	1 386	59,7%	26,8%	13,4%	0,0%	0,0%	0,0%	0,0%	0,0%	0,0%	0,0%	0,0%	0,0%	0,0%	0,0%	0,0%
Smartwings	17 828	85,9%	2,1%	2,0%	0,1%	0,5%	0,4%	0,5%	0,3%	0,5%	0,5%	0,2%	0,3%	3,7%	3,1%	0,0%
SunExpress	278	77,7%	0,0%	0,0%	0,0%	0,0%	0,0%	0,0%	0,0%	0,0%	0,0%	0,0%	0,0%	22,3%	0,0%	0,0%
SWISS	1 674	100,0%	0,0%	0,0%	0,0%	0,0%	0,0%	0,0%	0,0%	0,0%	0,0%	0,0%	0,0%	0,0%	0,0%	0,0%
TAP Portugal	992	100,0%	0,0%	0,0%	0,0%	0,0%	0,0%	0,0%	0,0%	0,0%	0,0%	0,0%	0,0%	0,0%	0,0%	0,0%
TAROM	372	100,0%	0,0%	0,0%	0,0%	0,0%	0,0%	0,0%	0,0%	0,0%	0,0%	0,0%	0,0%	0,0%	0,0%	0,0%
Transavia	282	100,0%	0,0%	0,0%	0,0%	0,0%	0,0%	0,0%	0,0%	0,0%	0,0%	0,0%	0,0%	0,0%	0,0%	0,0%
Transavia France	558	100,0%	0,0%	0,0%	0,0%	0,0%	0,0%	0,0%	0,0%	0,0%	0,0%	0,0%	0,0%	0,0%	0,0%	0,0%
Turkish Airlines	1 302	100,0%	0,0%	0,0%	0,0%	0,0%	0,0%	0,0%	0,0%	0,0%	0,0%	0,0%	0,0%	0,0%	0,0%	0,0%
Turkish Airlines (CARGO)	186	83,3%	16,7%	0,0%	0,0%	0,0%	0,0%	0,0%	0,0%	0,0%	0,0%	0,0%	0,0%	0,0%	0,0%	0,0%
Ukraine International	868	53,6%	41,4%	0,0%	0,0%	5,1%	0,0%	0,0%	0,0%	0,0%	0,0%	0,0%	0,0%	0,0%	0,0%	0,0%
United Airlines	312	100,0%	0,0%	0,0%	0,0%	0,0%	0,0%	0,0%	0,0%	0,0%	0,0%	0,0%	0,0%	0,0%	0,0%	0,0%
UPS (CARGO)	620	100,0%	0,0%	0,0%	0,0%	0,0%	0,0%	0,0%	0,0%	0,0%	0,0%	0,0%	0,0%	0,0%	0,0%	0,0%
Ural Airlines	1 110	100,0%	0,0%	0,0%	0,0%	0,0%	0,0%	0,0%	0,0%	0,0%	0,0%	0,0%	0,0%	0,0%	0,0%	0,0%
Volotea	968	87,8%	0,0%	9,3%	0,0%	2,9%	0,0%	0,0%	0,0%	0,0%	0,0%	0,0%	0,0%	0,0%	0,0%	0,0%
Vueling	1 364	97,7%	2,3%	0,0%	0,0%	0,0%	0,0%	0,0%	0,0%	0,0%	0,0%	0,0%	0,0%	0,0%	0,0%	0,0%
Wizz Air	1 900	93,1%	6,5%	0,0%	0,4%	0,0%	0,0%	0,0%	0,0%	0,0%	0,0%	0,0%	0,0%	0,0%	0,0%	0,0%
TOTAL	109 099	87,2%	3,3%	1,0%	0,3%	0,7%	0,5%	0,7%	1,4%	0,7%	0,6%	0,3%	0,4%	2,2%	0,8%	0,0%

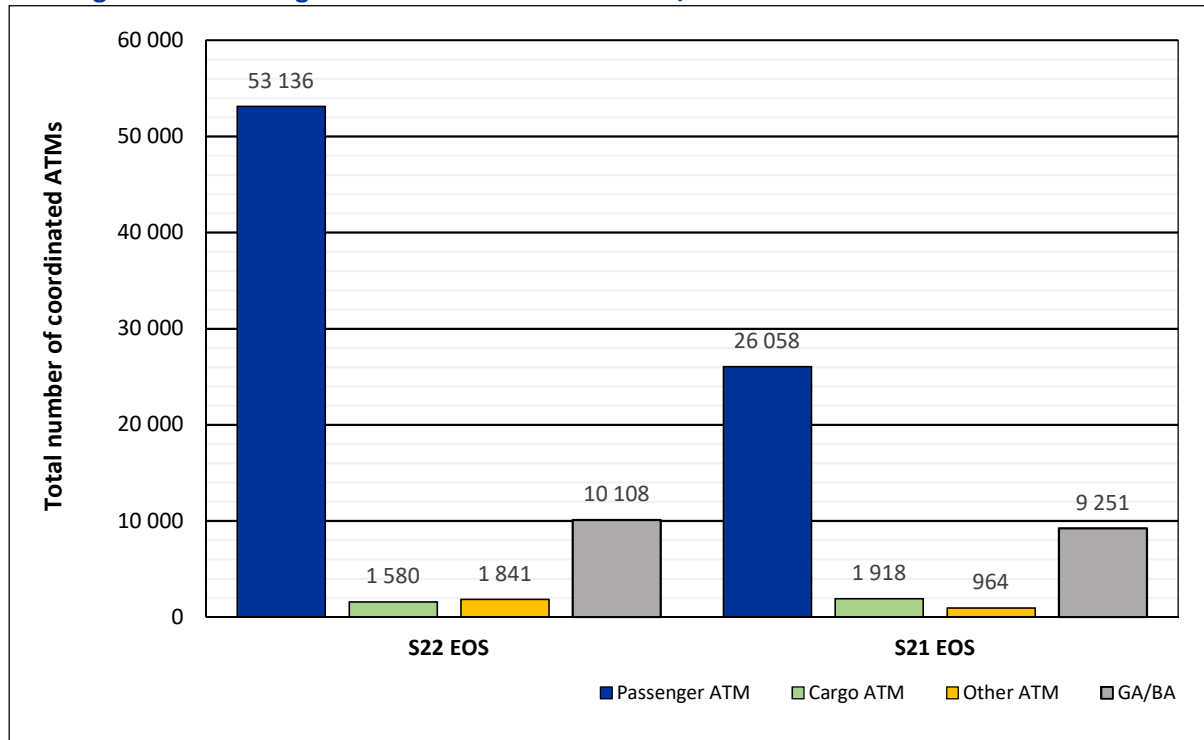
EOS S22 - ATM Allocation and Seats Capacity and pax numbers by Operators

Comparison S22 EOS vs. S21 EOS – ATM + Seats Capacity + PAX numbers

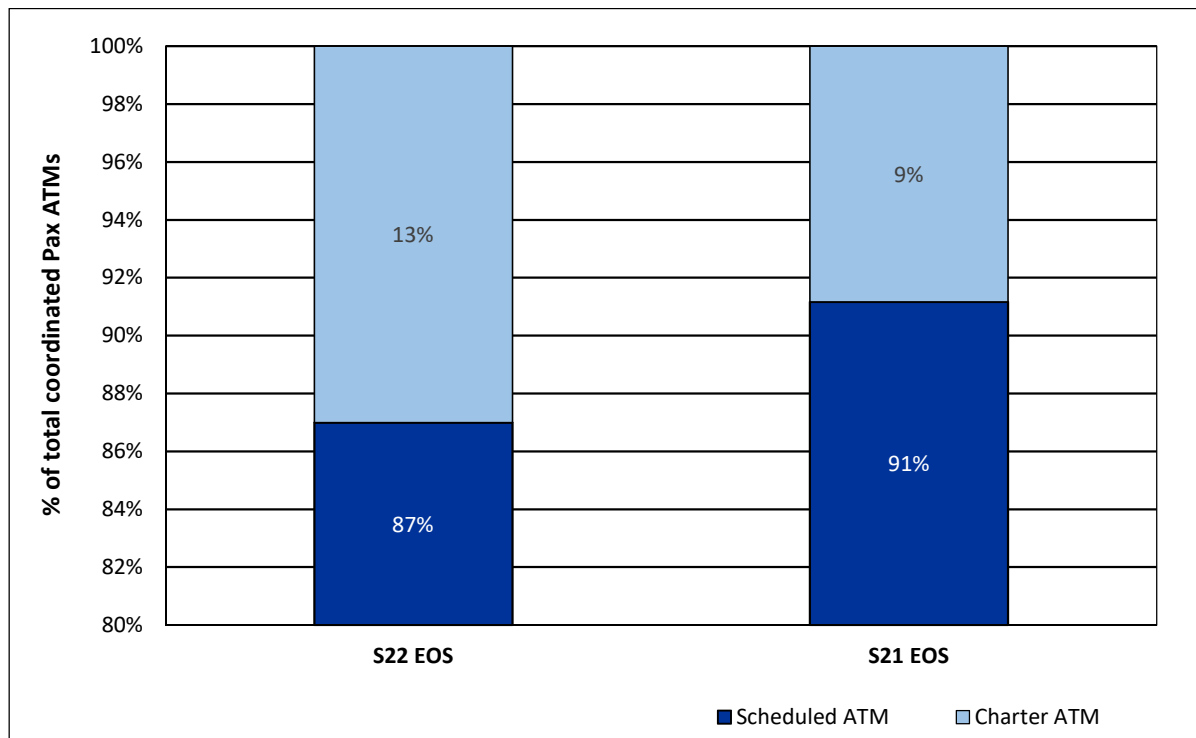
Operator	IATA	ICAO	FULL SEASON ALLOCATION										
			EOS S22 ATMs	EOS S21 ATMs	+/- change	S22 Rank	EOS S22 seats capacity	EOS S21 seats capacity	+/- seats capacity change	EOS S22 PAX numbers	EOS S21 PAX numbers	+/- PAX numbers change	S22 Rank
Aegean Airlines	A3	AEE	370	230	140	30	64 846	40 144	24 702	53 772	22 625	31 147	26
Aer Lingus	EI	EIN	246	14	232	35	42 804	2 436	40 368	35 786	1 489	34 297	32
Aeroflot	SU	AFL	0	289	-289	74	0	46 918	-46 918	0	29 598	-29 598	69
Air Arabia	G9	ABY	0	2	-2	74	0	336	-336	0	290	-290	69
Air Baltic	BT	BTI	232	94	138	36	33 190	13 630	19 560	28 836	7 834	21 002	33
Air Cairo	SM	MSC	122	116	6	50	21 228	20 184	1 044	17 181	14 423	2 758	41
Air France	AF	AFR	1 232	711	521	13	208 491	82 015	126 476	181 233	61 256	119 977	9
Air Malta	KM	AMC	154	102	52	45	26 976	18 360	8 616	24 579	12 392	12 187	35
Air Montenegro	MNE	MNE	66	0	66	58	7 784	0	7 784	6 111	0	6 111	53
Air Serbia	JU	ASL	226	102	124	38	15 064	7 044	8 020	11 746	4 284	7 462	44
Arkia Israeli Airlines	IZ	AIZ	98	134	-36	53	17 397	23 208	-5 811	13 721	16 626	-2 905	42
ASL Airlines (CARGO)	3V	TAY	532	524	8	22	0	0	0	0	0	0	69
Austrian Airlines	OS	AUA	1 218	557	661	14	146 780	66 246	80 534	115 796	25 767	90 029	16
Azerbaijan Airlines	J2	AHY	80	0	80	56	10 672	0	10 672	9 004	0	9 004	48
Bees Airlines	7B	UBE	0	6	-6	74	0	1 134	-1 134	0	331	-331	69
Belavia	B2	BRU	0	52	-52	74	0	5 668	-5 668	0	3 141	-3 141	69
Blue Air	OB	BLA	180	126	54	43	32 726	23 814	8 912	24 537	13 292	11 245	36
Blue Bird Airways	BZ	BBG	27	38	-11	67	5 021	7 100	-2 079	3 214	4 336	-1 122	61
Blue Panorama Airlines	BV	BPA	0	25	-25	74	0	6 113	-6 113	0	5 744	-5 744	69
British Airways	BA	BAW	1 344	141	1 203	11	255 192	25 460	229 732	207 176	20 084	187 092	7
Brussels Airlines	SN	BEL	738	202	536	20	108 621	29 496	79 125	91 097	25 630	65 467	19
Bul Air	LB	BVL	43	0	43	63	6 362	0	6 362	5 851	0	5 851	54
Bulgaria Air	FB	LZB	216	171	45	39	26 740	21 772	4 968	21 853	15 107	6 746	38
Corendon Airlines	XC	CAI	31	34	-3	65	5 823	6 426	-603	5 439	5 905	-466	57
Croatia Airlines	OU	CTN	32	28	4	64	2 840	3 080	-240	2 145	1 276	869	63
Cyprus Airways	CY	CYP	4	70	-66	71	300	10 152	-9 852	356	6 563	-6 207	67
Czech Airlines	OK	CSA	847	1 160	-313	17	140 152	196 602	-56 450	111 940	117 235	-5 295	17
Delta Airlines	DL	DAL	202	0	202	40	45 453	0	45 453	42 158	0	42 158	28
EasyJet	EZY	EZY	3 232	672	2 560	4	561 278	117 346	443 932	482 758	84 773	397 985	3
Egyptair	MS	MSR	0	70	-70	74	0	9 800	-9 800	0	7 131	-7 131	69
El Al Israel	LY	ELY	396	93	303	28	61 162	16 077	45 085	59 430	13 047	46 383	24
Emirates	EK	UAE	428	344	84	26	154 266	123 348	30 918	120 311	42 178	78 133	15
Enter Air	ENT	ENT	63	27	36	59	11 907	5 103	6 804	9 921	3 687	6 234	46
European Air Charter	BUC	BUC	22	0	22	68	3 608	0	3 608	3 333	3 291	42	60
Eurowings AG	EW	EWG	3 182	223	2 959	5	532 320	37 710	494 610	361 175	17 332	343 843	5
FedEx (CARGO)	FX	FDX	0	240	-240	74	0	0	0	0	0	0	69
Finnair	AY	FIN	793	245	548	19	133 122	25 280	107 842	105 936	17 601	88 335	18
Fly Play	OG	FPY	100	0	100	52	17 976	0	17 976	13 707	0	13 707	43
flydubai	FZ	FDB	350	136	214	32	58 128	23 344	34 784	40 783	13 422	27 361	29
Flynas	XY	KNE	112	0	112	51	19 040	0	19 040	5 649	0	5 649	55
Flyr A/S	FS	FOX	76	0	76	57	12 474	0	12 474	6 795	0	6 795	52
GA/BA Operators			10 108	9 251	857	2	0	0	0	17 449	14 375	3 074	40
Iberia	IB	IBE	356	174	182	31	65 586	29 184	36 402	53 779	20 929	32 850	25
Israir Airlines	6H	ISR	130	96	34	48	23 448	16 944	6 504	18 323	11 875	6 448	39
Jazeera airways	J9	JZR	48	0	48	60	8 352	0	8 352	5 550	0	5 550	56
Jet2.com	LS	EXS	386	0	386	29	69 038	0	69 038	60 685	0	60 685	23
KLM	KL	KLM	1 489	1 332	157	10	232 888	180 592	52 296	197 395	129 975	67 420	8
Korean Air	KE	KAL	2	3	-1	73	260	544	-284	12	388	-376	68
LOT Polish Airlines	LO	LOT	1 731	693	1 038	9	167 522	56 036	111 486	133 730	36 370	97 360	12
Lufthansa	LH	DLH	2 604	1 702	902	6	388 832	190 173	198 659	327 739	144 825	182 914	6
Luxair	LG	LGL	186	2	184	42	14 136	152	13 984	9 123	0	9 123	47
NEOS	NO	NOS	11	0	11	69	3 949	0	3 949	3 193	0	3 193	62
Norwegian	DY	NOZ	978	278	700	15	182 540	51 708	130 832	150 918	35 078	115 840	11
Nouvelair Tunisia	BJ	LBT	28	0	28	66	4 956	0	4 956	4 559	0	4 559	58
Other Cargo Operators			134	146	-12	46	0	0	0	0	0	0	69
Other Flights			1 839	964	875	8	0	0	0	8 312	4 382	3 930	49
Other PAX Charters			98	139	-41	53	12 774	16 166	-3 392	7 663	8 610	-947	50
Pegasus Airlines	PC	PGT	438	217	221	24	83 159	41 013	42 146	67 969	22 837	45 132	21
Privat Wings	PWF	PWF	155	0	155	44	3 014	0	3 014	965	0	965	64
Qatar Airways	QR	QTR	398	246	152	27	52 780	57 710	-4 930	44 874	16 496	28 378	27
Qatar Airways (CARGO)	QR	QTR	128	214	-86	49	0	0	0	0	0	0	69
Rossiya Airlines	FV	SDM	0	74	-74	74	0	8 652	-8 652	0	5 332	-5 332	69
Ryanair	RFR	RFR	7 244	4 137	3 107	3	1 373 276	782 227	591 049	1 236 580	568 454	668 126	2
Salam Air	OV	OMS	6	0	6	70	1 272	0	1 272	625	0	625	65
SAS	SK	SAS	84	25	59	55	13 662	4 476	9 186	10 312	2 655	7 657	45
SkyUp Airlines	PQ	SQP	0	36	-36	74	0	5 524	-5 524	0	3 092	-3 092	69
Smartwings	QS	TVS	13 418	7 933	5 485	1	2 486 935	1 491 009	995 926	2 156 631	1 117 626	1 039 005	1
SunExpress	XQ	SXS	132	0	132	47	24 354	0	24 354	23 584	0	23 584	37
SWISS	LX	SWR	1 242	509	733	12	167 608	74 601	93 007	126 441	51 774	74 667	14
Tailwind	TWI	TWI	46	0	46	62	7 776	0	7 776	6 901	0	6 901	51
TAP Portugal	TP	TAP	434	345	89	25	77 780	53 678	24 102	64 162	34 108	30 054	22
TAROM	RO	ROT	248	94	154	34	29 080	11 070	18 010	24 936	6 989	17 947	34
Transavia	HV	TRA	232	92	140	36	43 848	18 352	25 496	36 754	13 186	23 568	30
Transavia France	TO	TVF	258	30	228	33	48 277	2 816	45 461	36 481	1 957	34 524	31
Turkish Airlines	TK	THY	836	486	350	18	160 584	86 622	73 962	128 319	54 537	73 782	13
Turkish Airlines (CARGO)	TK	THY	188	180	8	41	0	0	0	0	0	0	69
Ukraine International	PS	AUI	4	175	-171	72	498	19 714	-19 216	404	14 405	-14 001	66
UPS (CARGO)	5X	UPS	590	594	-4	21	0	0	0	0	0	0	69
Uzbekistan Airways	HY	UZB	48	0	48	60	7 200	0	7 200	4 308	0	4 308	59
Volotea	V7	VOE	464	84	380	23	78 684	14 418	64 266	72 685	12 593	60 092	20
Vueling	VY	VLG	920	467	453	16	171 654	82 212	89 442	157 896	62 721	95 175	10
Wizz Air	W6	WZZ	2 030	505	1 525	7	434 954	102 059	332 895	367 726	77 240	290 486	4
TOTAL			66 665	38 201			9 230 419	1 966 670		7 790 312	3 090 499		

EOS S22 Full Season - Total ATM Analysis

Passenger ATMs vs. Cargo ATMs vs. Other ATMs vs. GA/BA

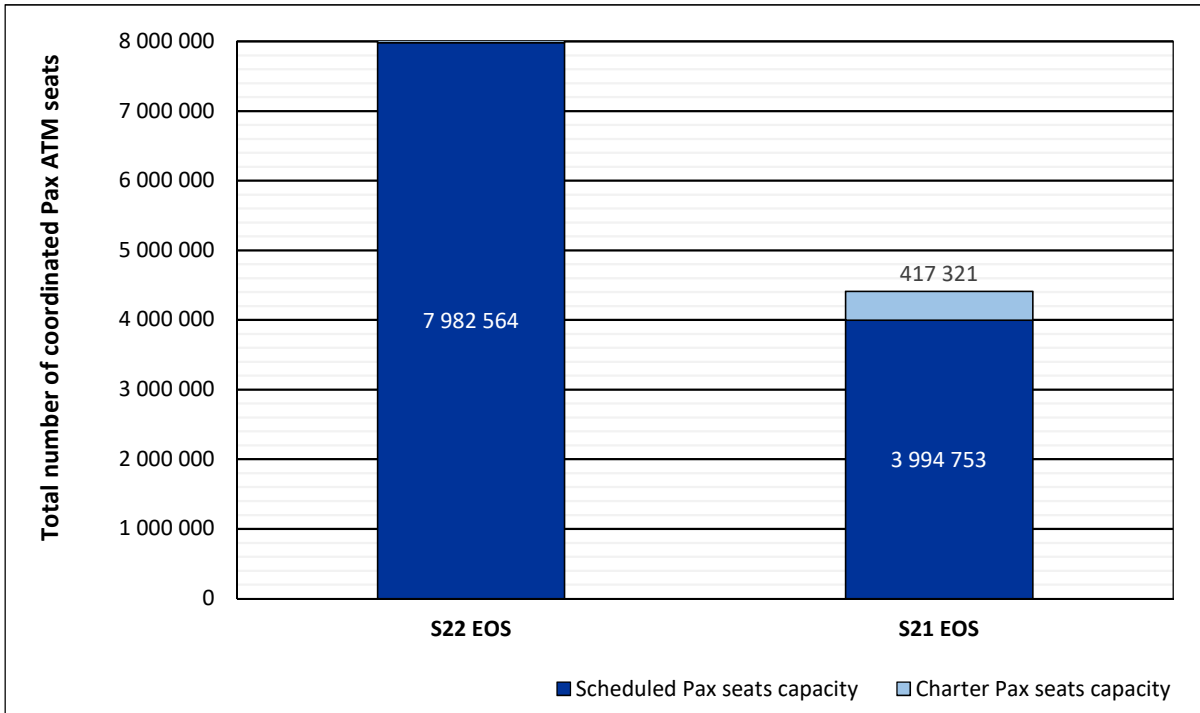


Passenger ATMs: Scheduled vs. Charter

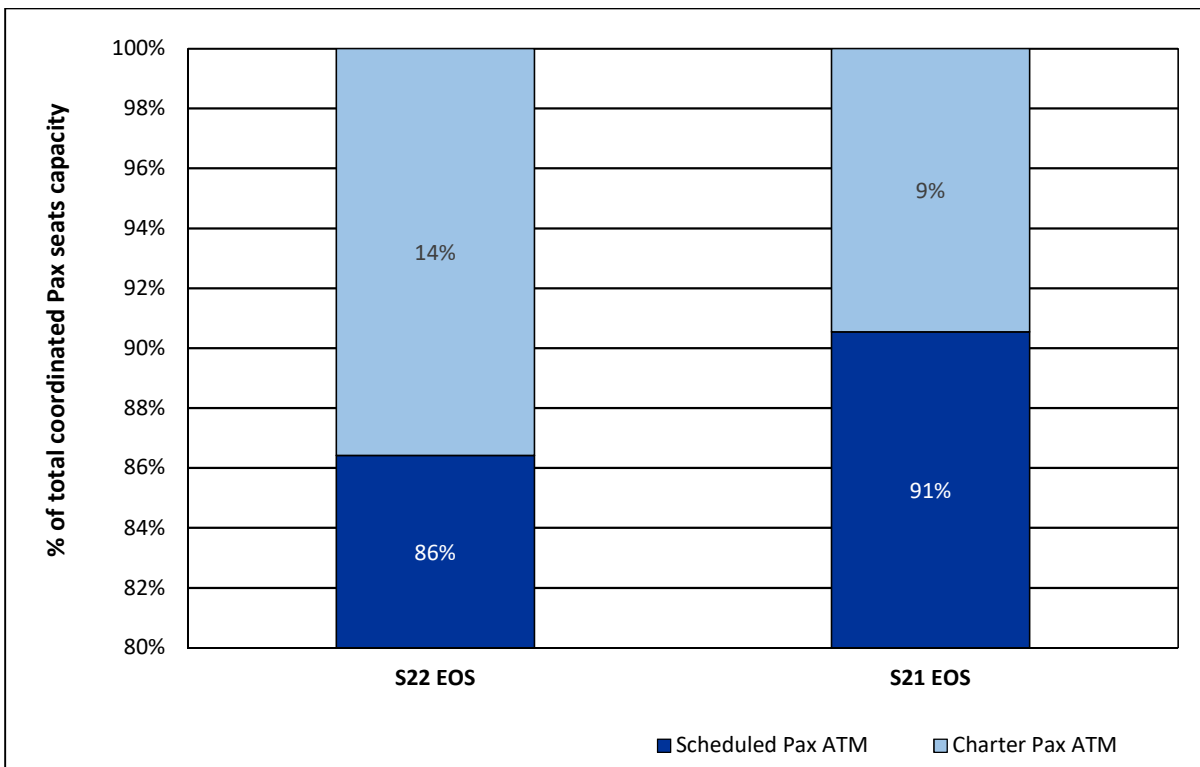


EOS S22 Full Season - Passenger ATM Seats Capacity Analysis

Passenger ATM seats: Scheduled vs. Charter

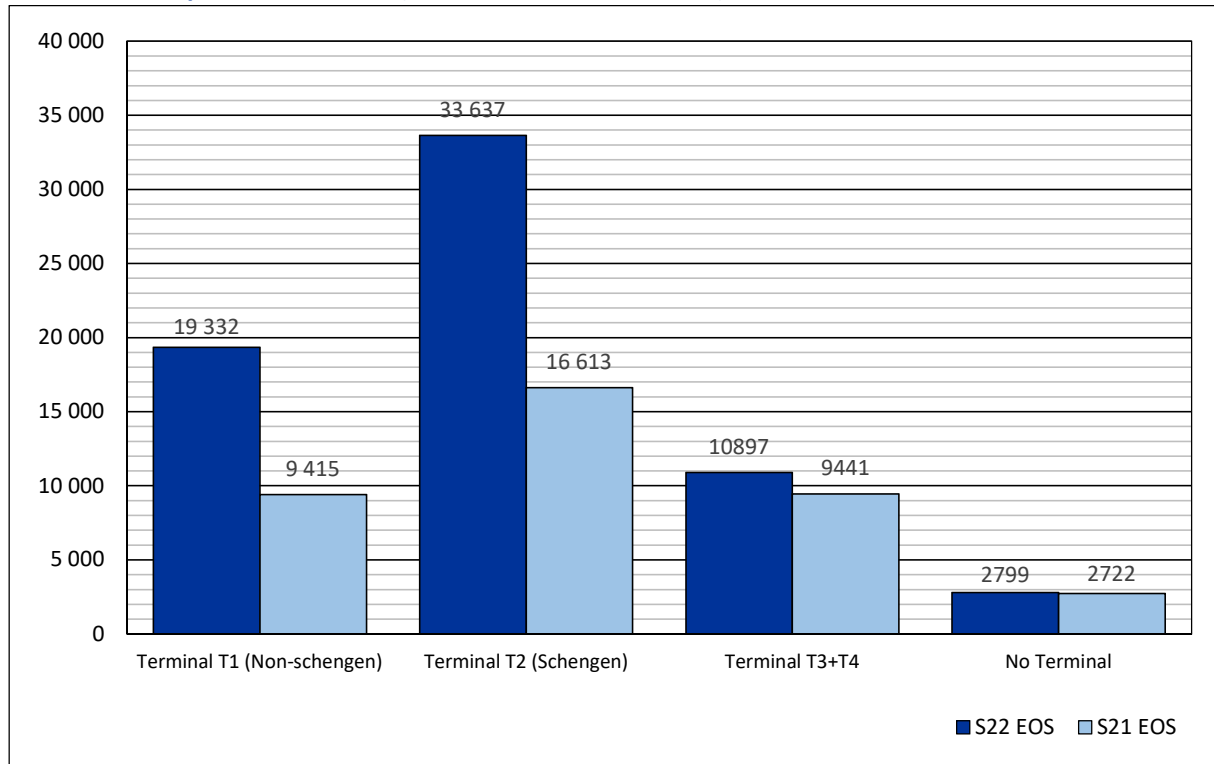


Passenger ATM seats: Schedule vs. Charter



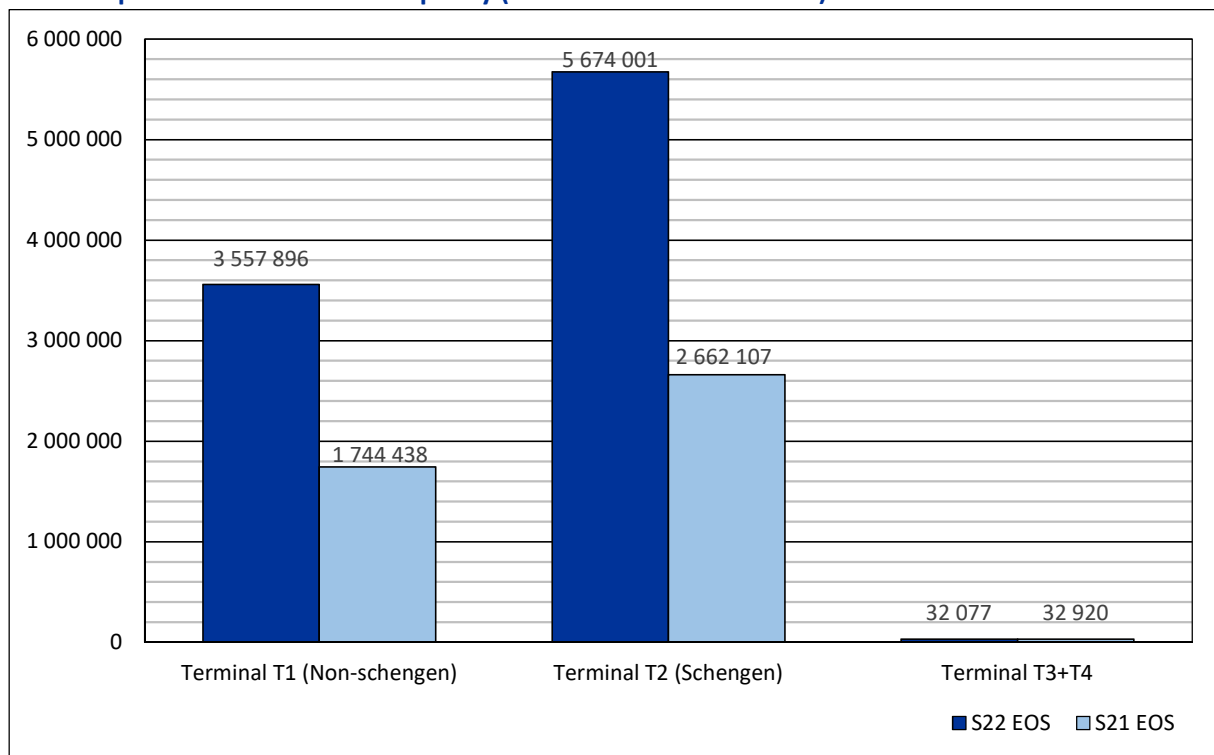
EOS S22 Full Season - Terminal Analysis

Total Air Transport Movements (total allocated for season)



Note: Terminal T3 - special charter flights, special flights and GA/BA flights are included
Terminal T4 – government, state flights

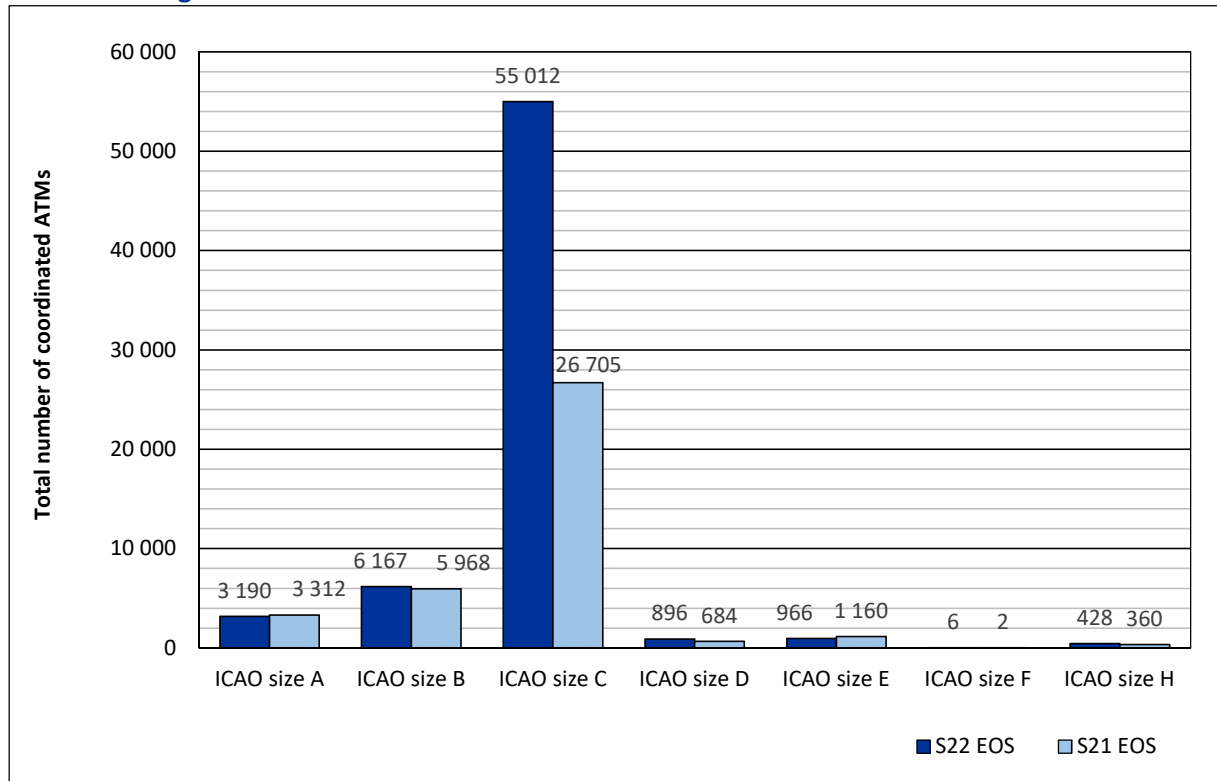
Air Transport Movement Seats Capacity (total allocated for season)



Note: Terminal T3 - special charter flights are included ONLY
Terminal T4 – government, state flights

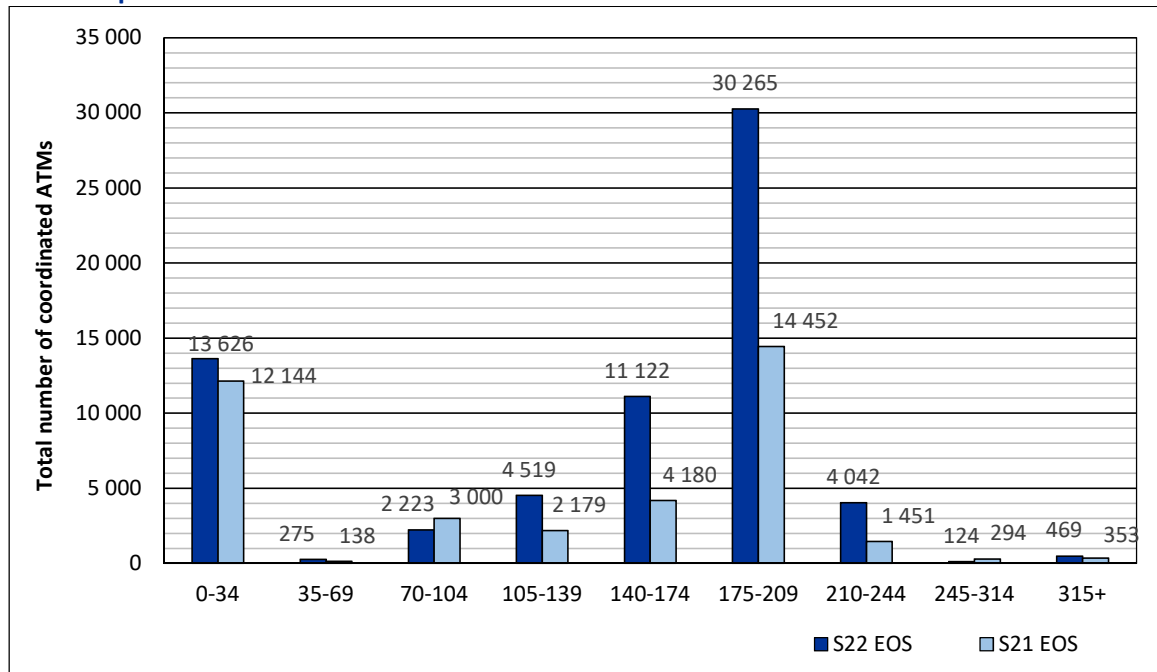
EOS S22 Full Season - Aircraft Size Analysis

ICAO size designation



Note: See Glossary for definitions of ICAO Size groupings

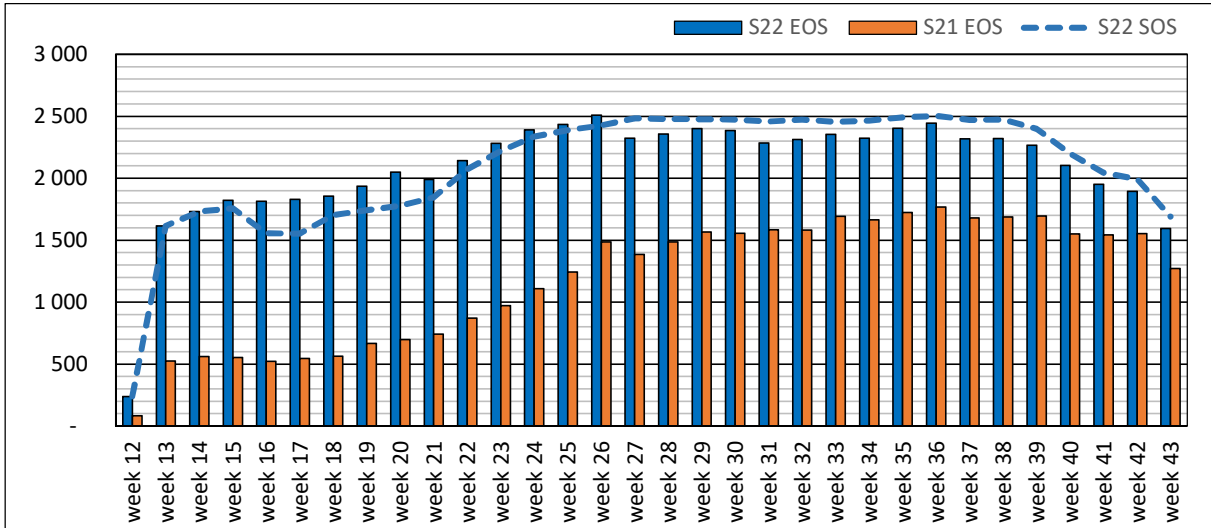
Air Transport Movement seat distribution



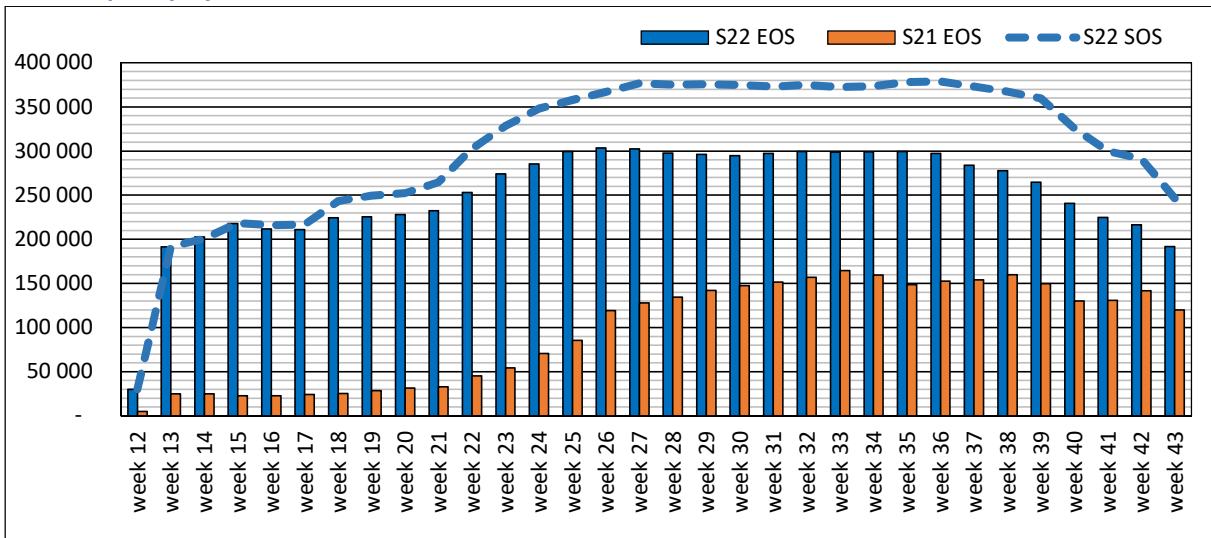
Note: Cargo services with 0 seats are included in the first seat band „0-34“

EOS S22 Full Season - Seasonality

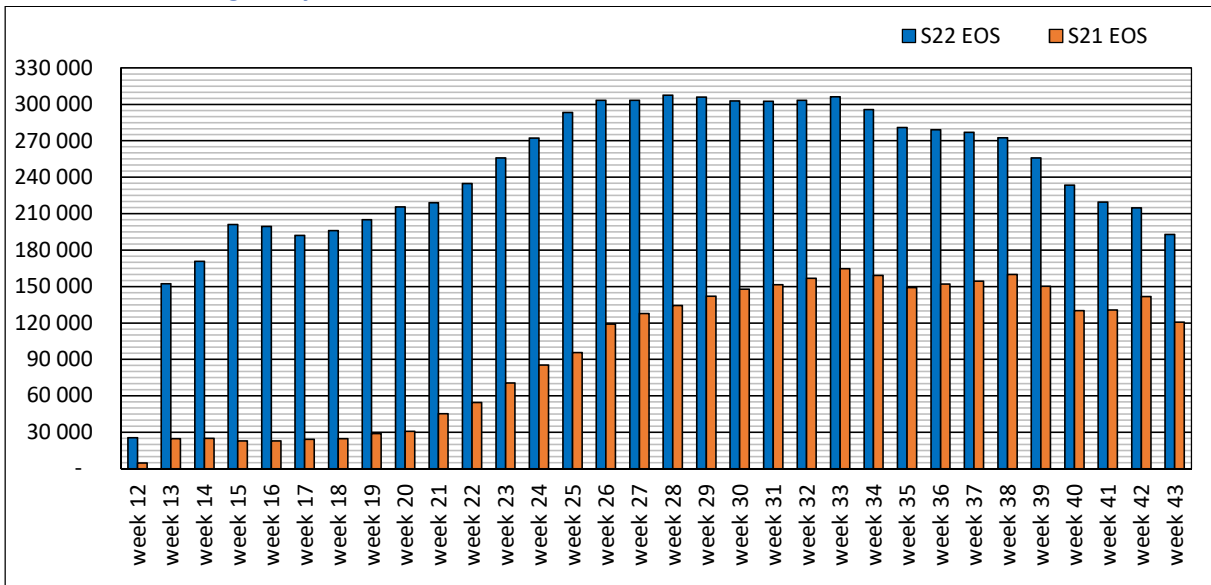
Airport Transport Movements by week of season



Seats Capacity by week of season

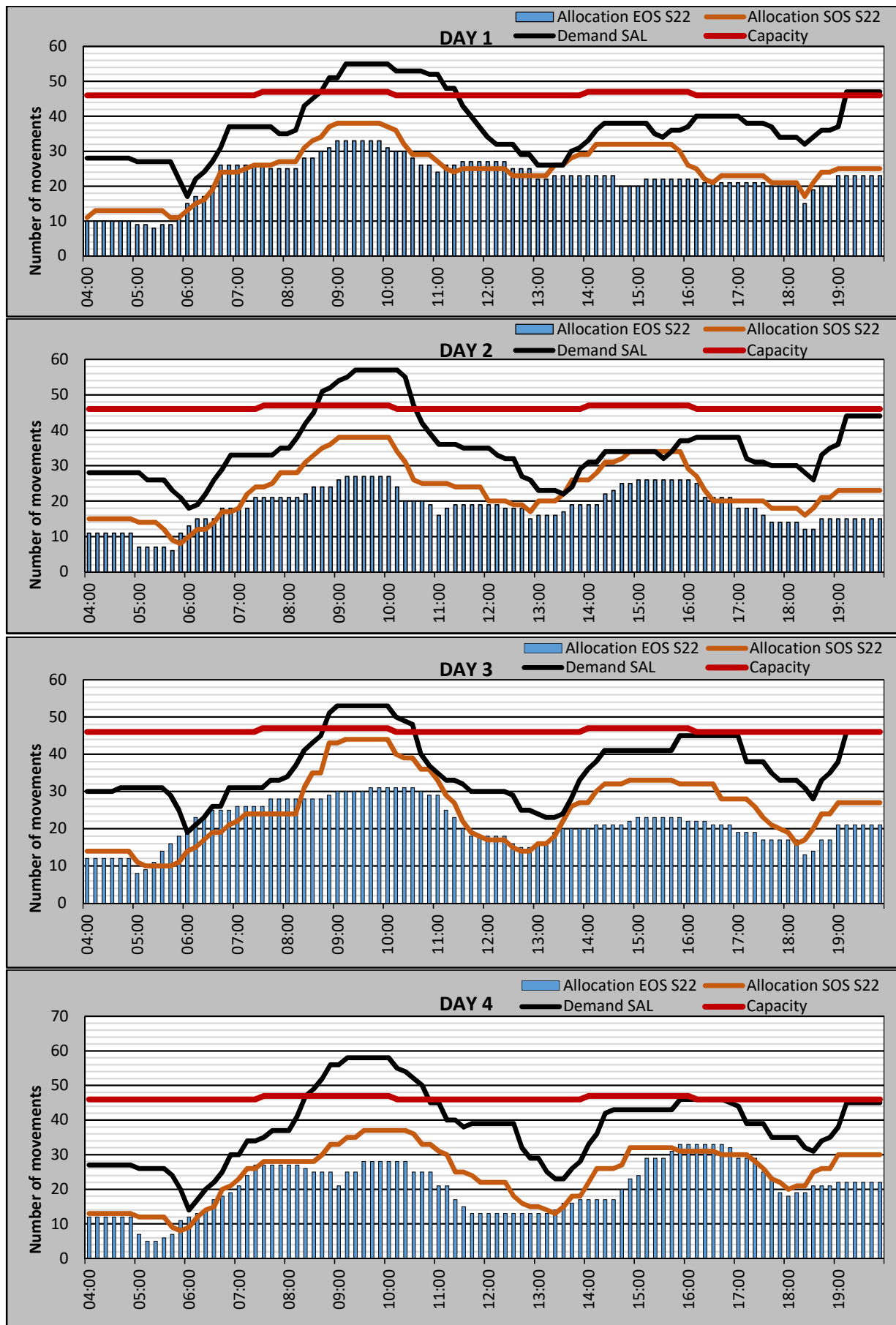


Number of Passengers by week of season



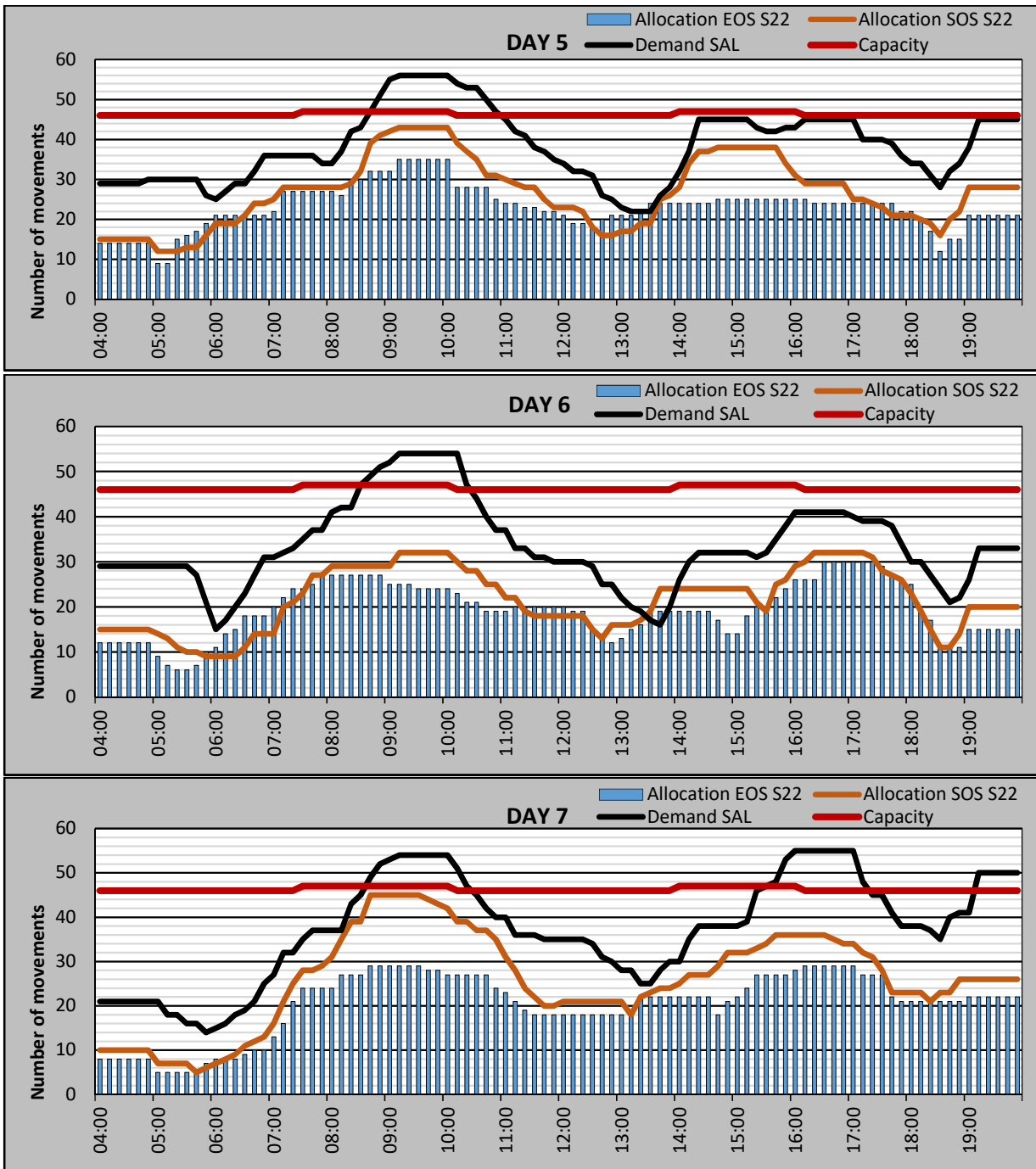
EOS S22 Typical Week Histogram – Runway Allocation

TOTAL Movements – 60 minute count rolling every 10 minutes (R60/10)



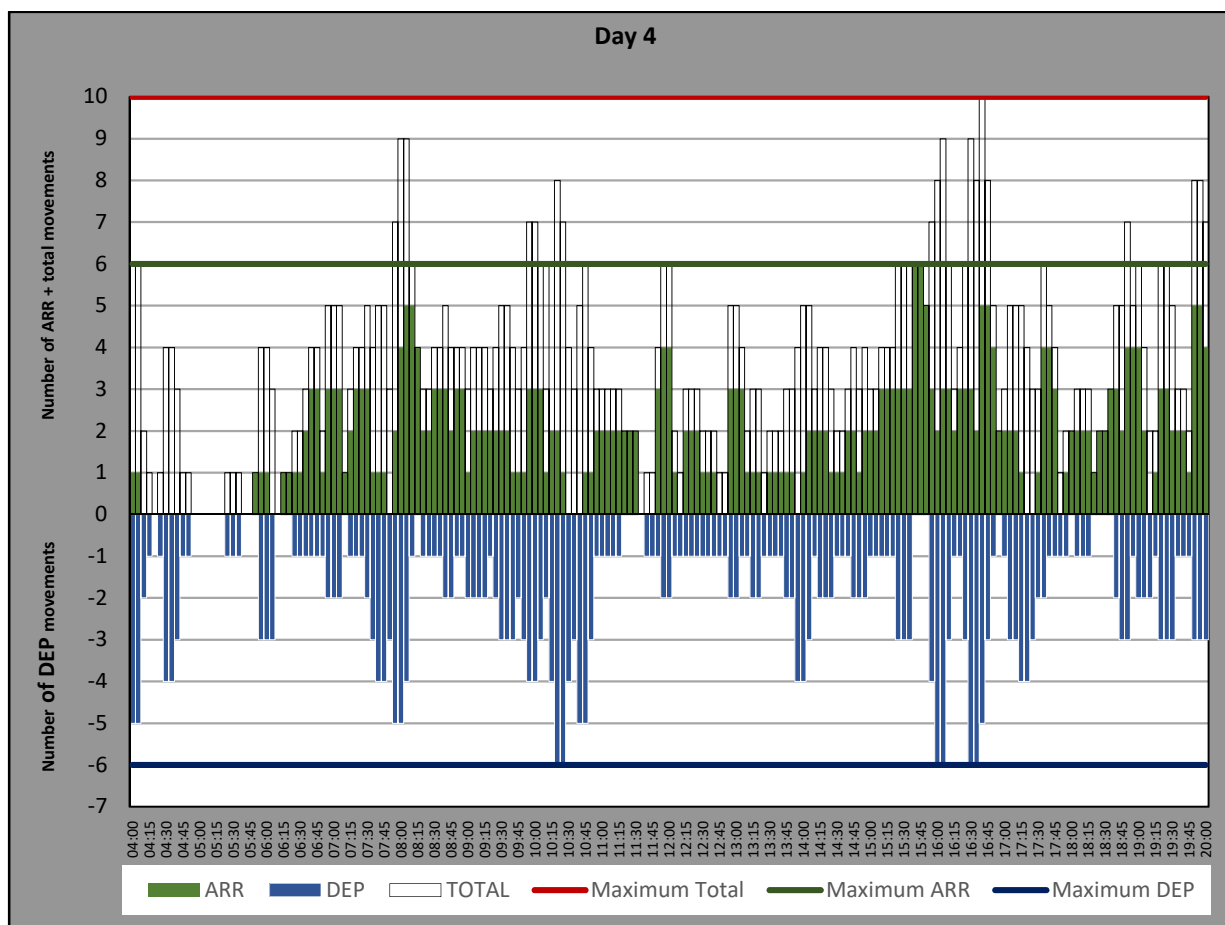
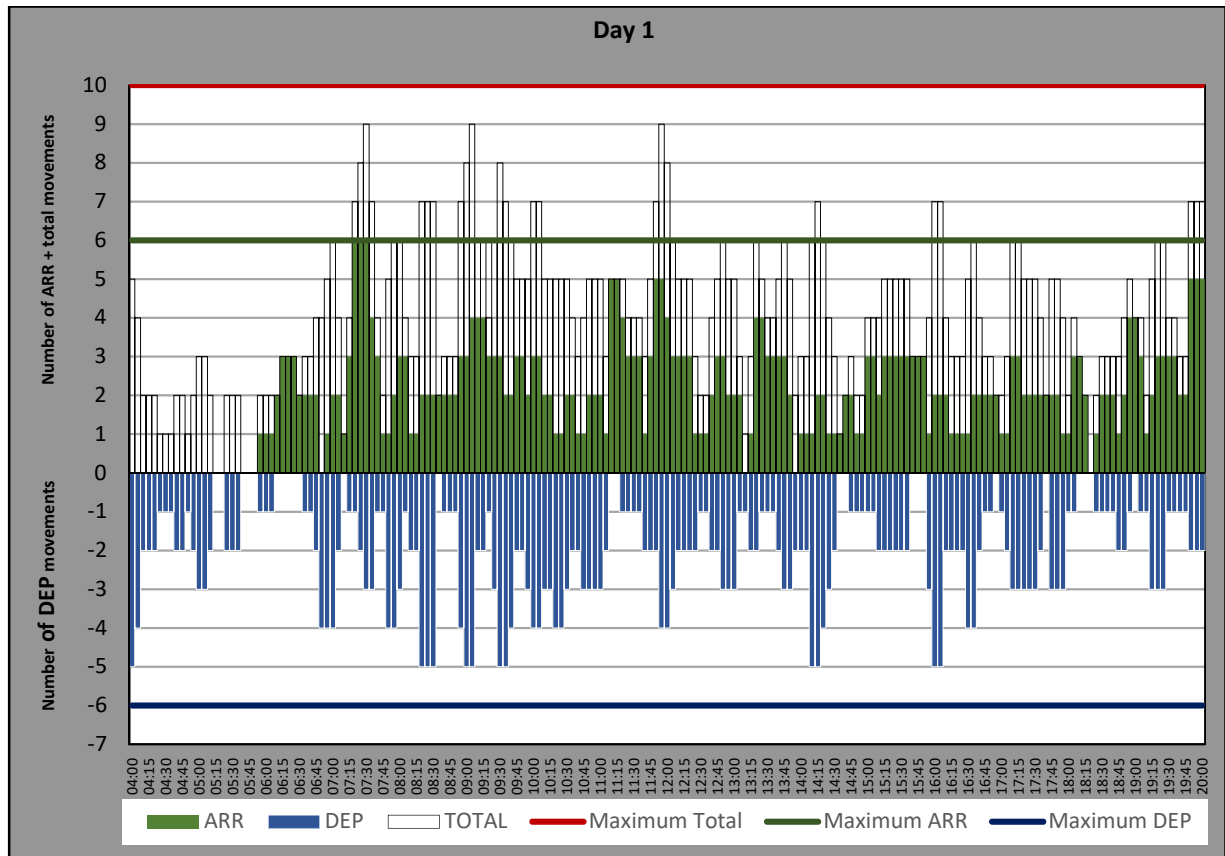
EOS S22 Typical Week Histogram – Runway Allocation

TOTAL Movements – 60 minute count rolling every 10 minutes (R60/10)



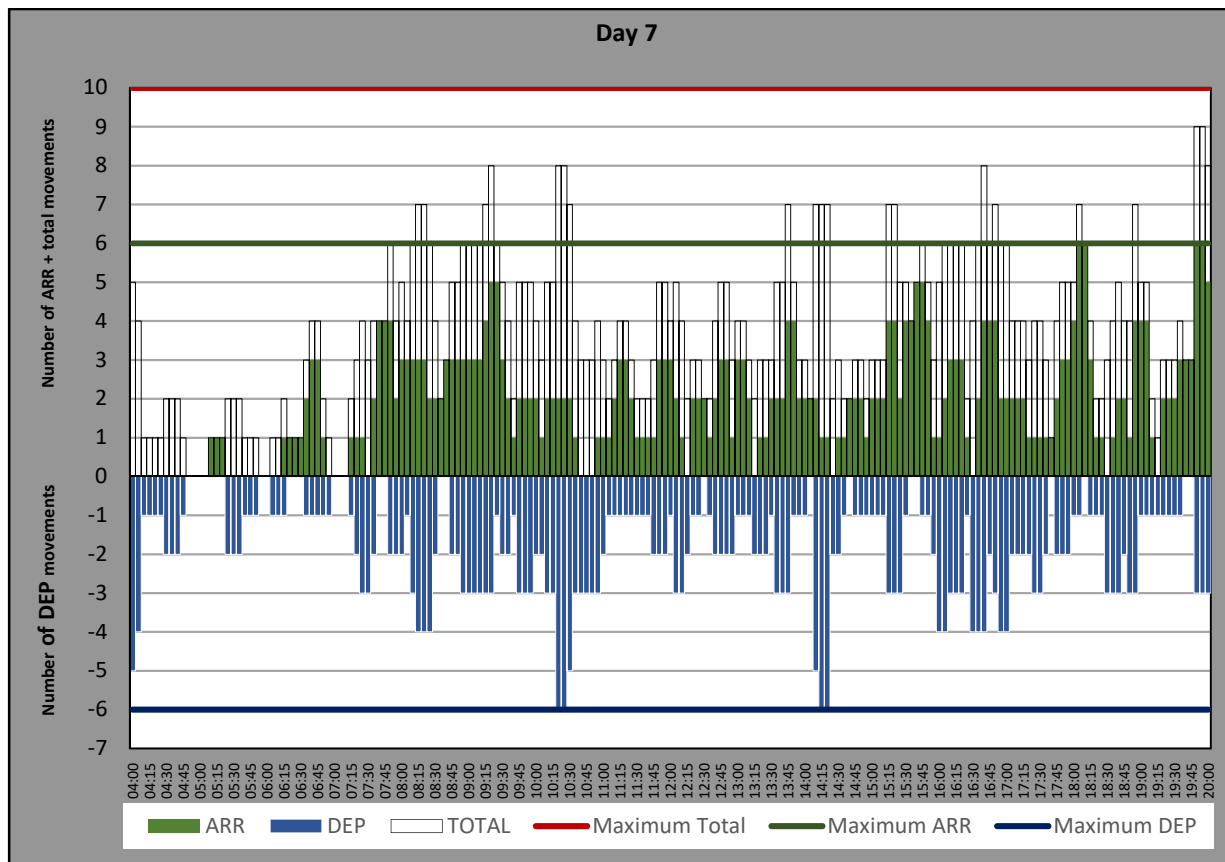
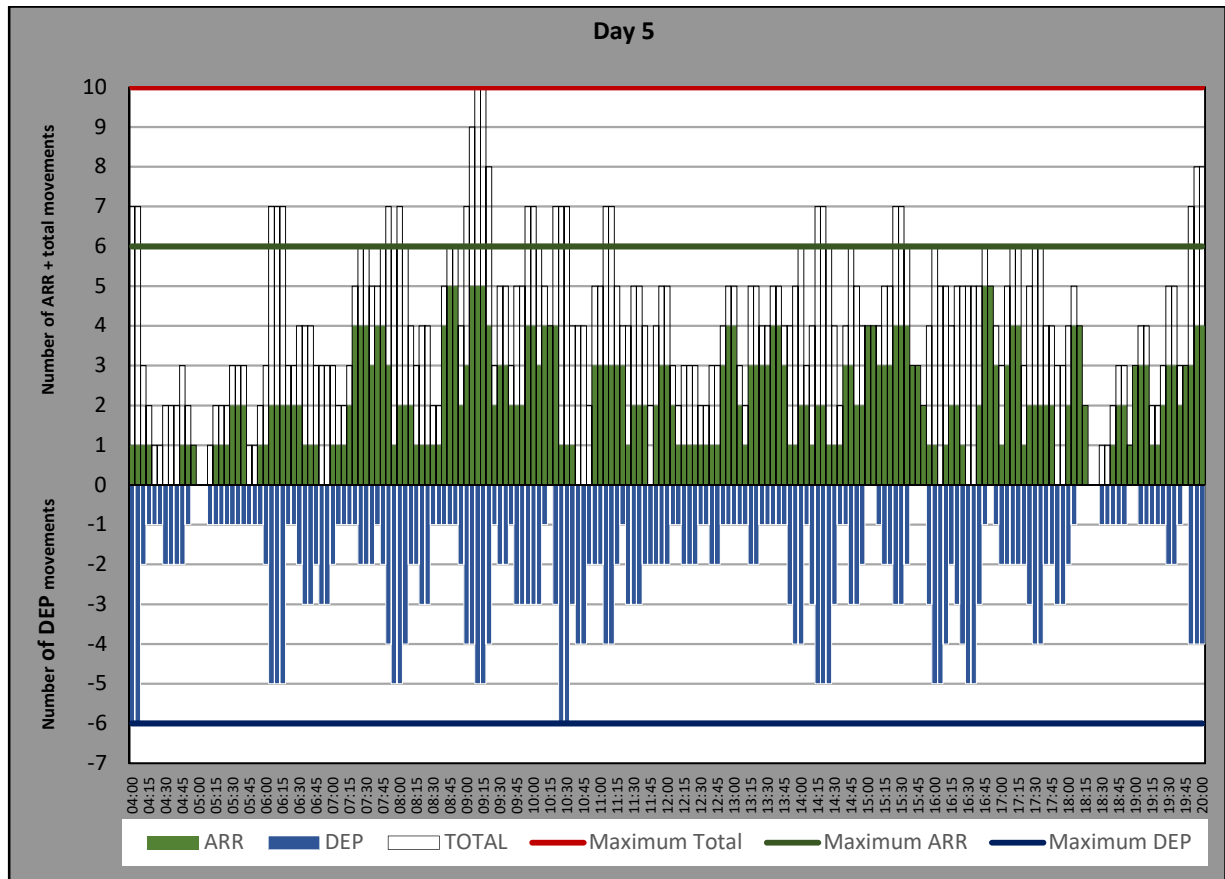
EOS S22 Typical Week Histogram – Runway Allocation

ARRIVAL + DEPARTURE + TOTAL – 10 minute count rolling every 5 minutes (R10/5) – top days



EOS S22 Typical Week Histogram – Runway Allocation

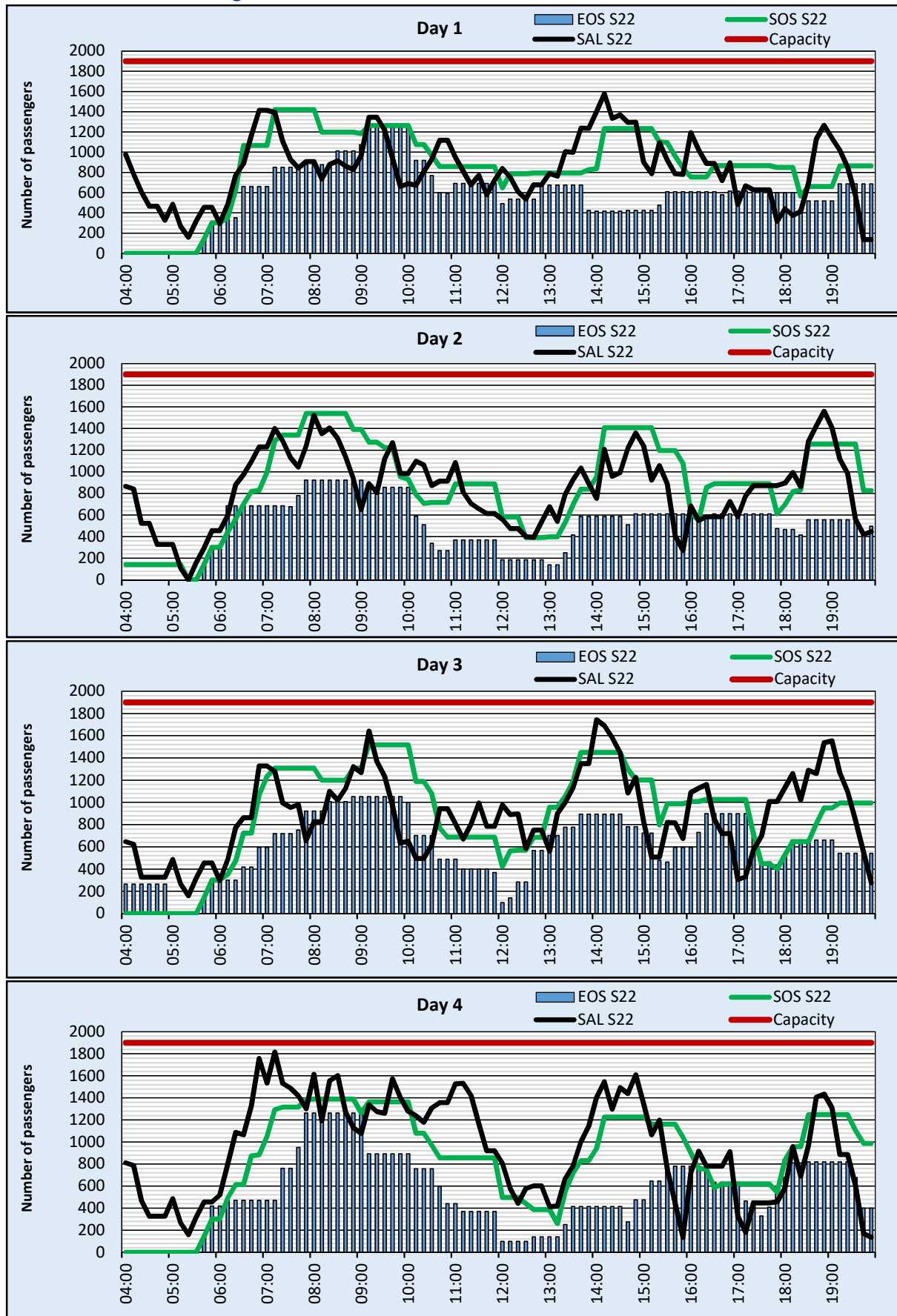
ARRIVAL + DEPARTURE + TOTAL – 10 minute count rolling every 5 minutes (R10/5)



EOS S22 Typical Week Histogram – Passengers

ARRIVAL – 60 minute count rolling every 10 minutes (T60/10)

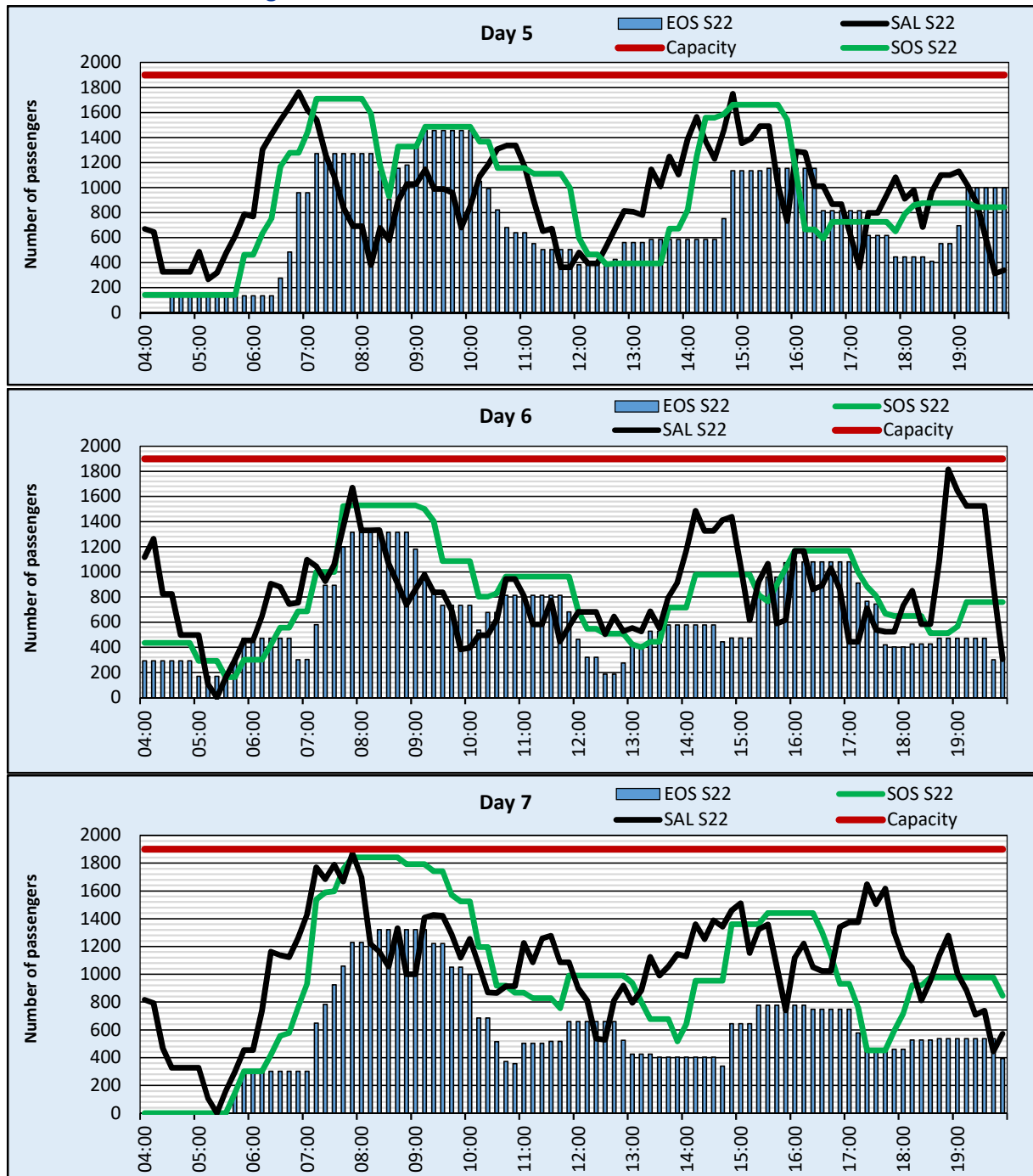
Terminal T1 – Non-Schengen



EOS S22 Typical Week Histogram – Passengers

ARRIVAL – 60 minute count rolling every 10 minutes (T60/10)

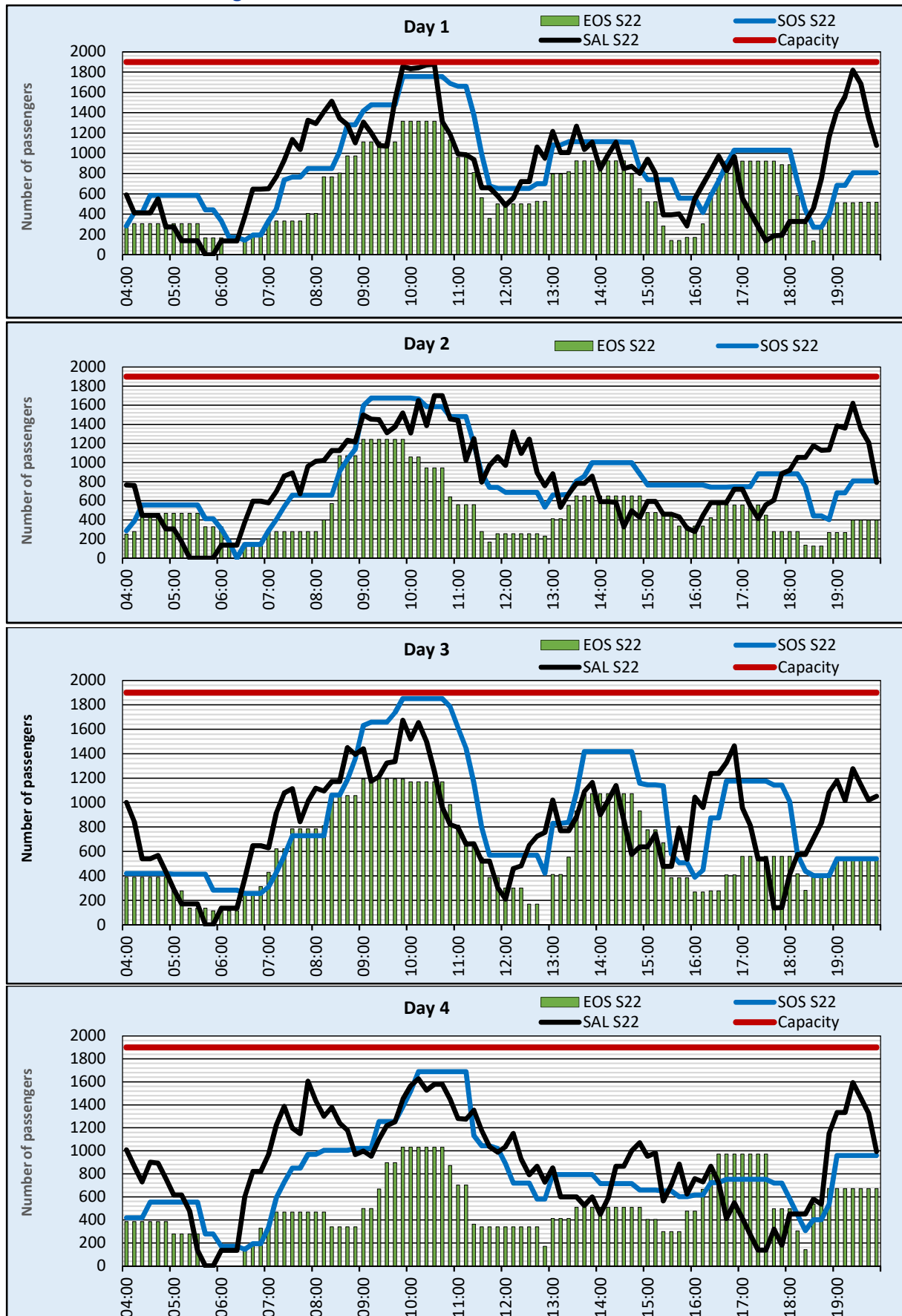
Terminal T1 – Non-Schengen



EOS S22 Typical Week Histogram – Passengers

DEPARTURE – 60 minute count rolling every 10 minutes (T60/10)

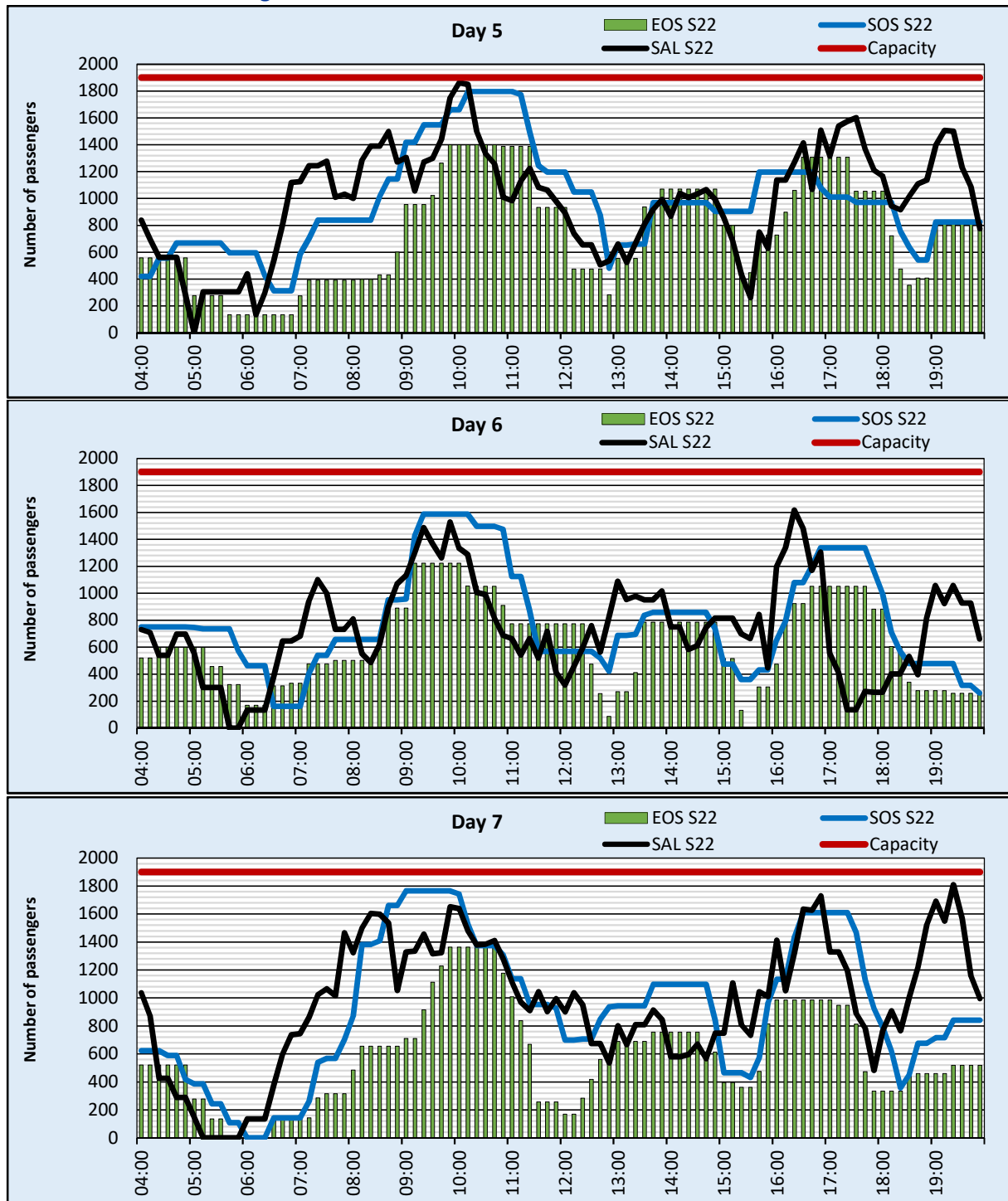
Terminal T1 – Non-Schengen



EOS S22 Typical Week Histogram – Passengers

DEPARTURE – 60 minute count rolling every 10 minutes (T60/10)

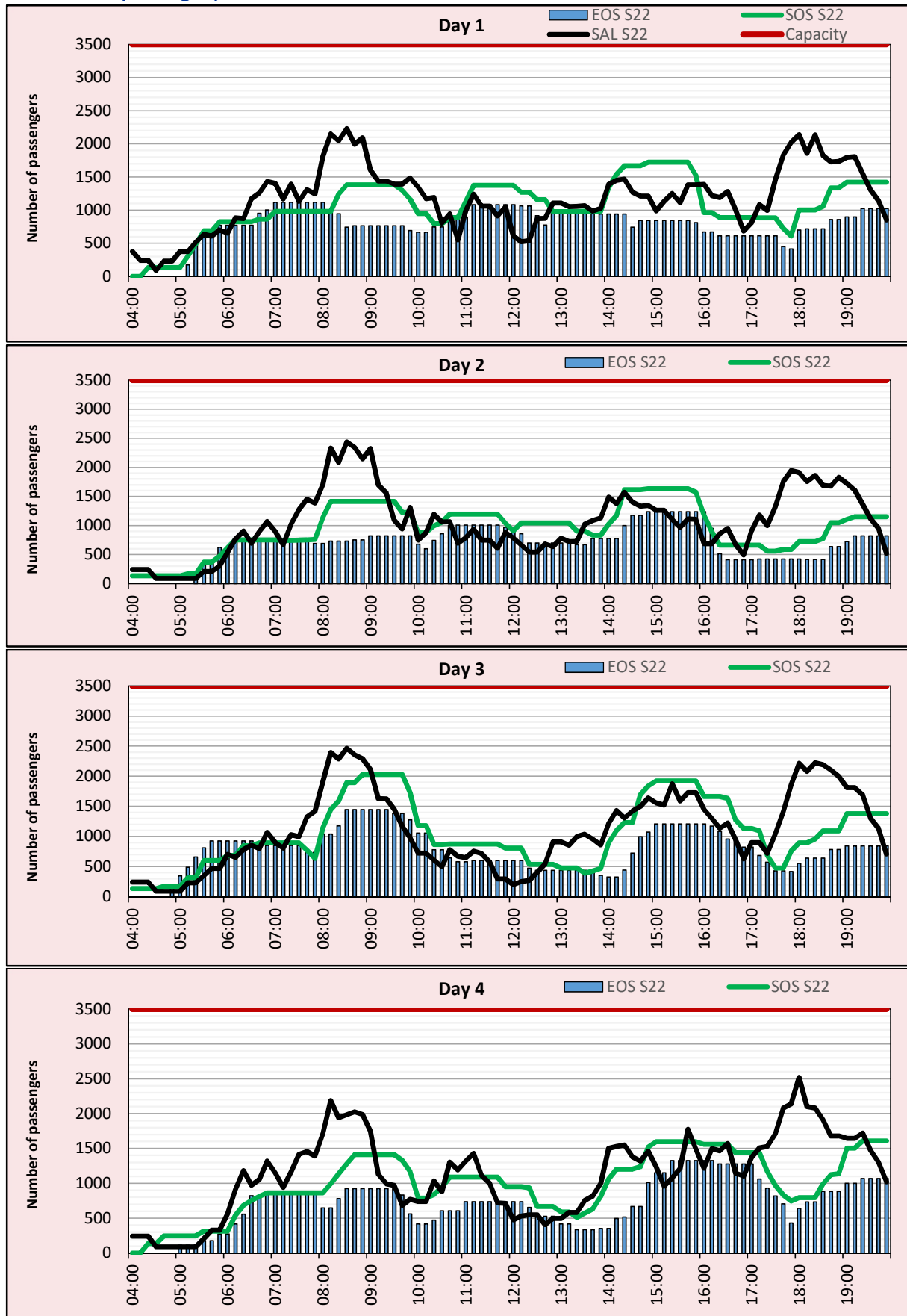
Terminal T1 – Non-Schengen



EOS S22 Typical Week Histogram – Passengers

ARRIVAL – 60 minute count rolling every 10 minutes (T60/10)

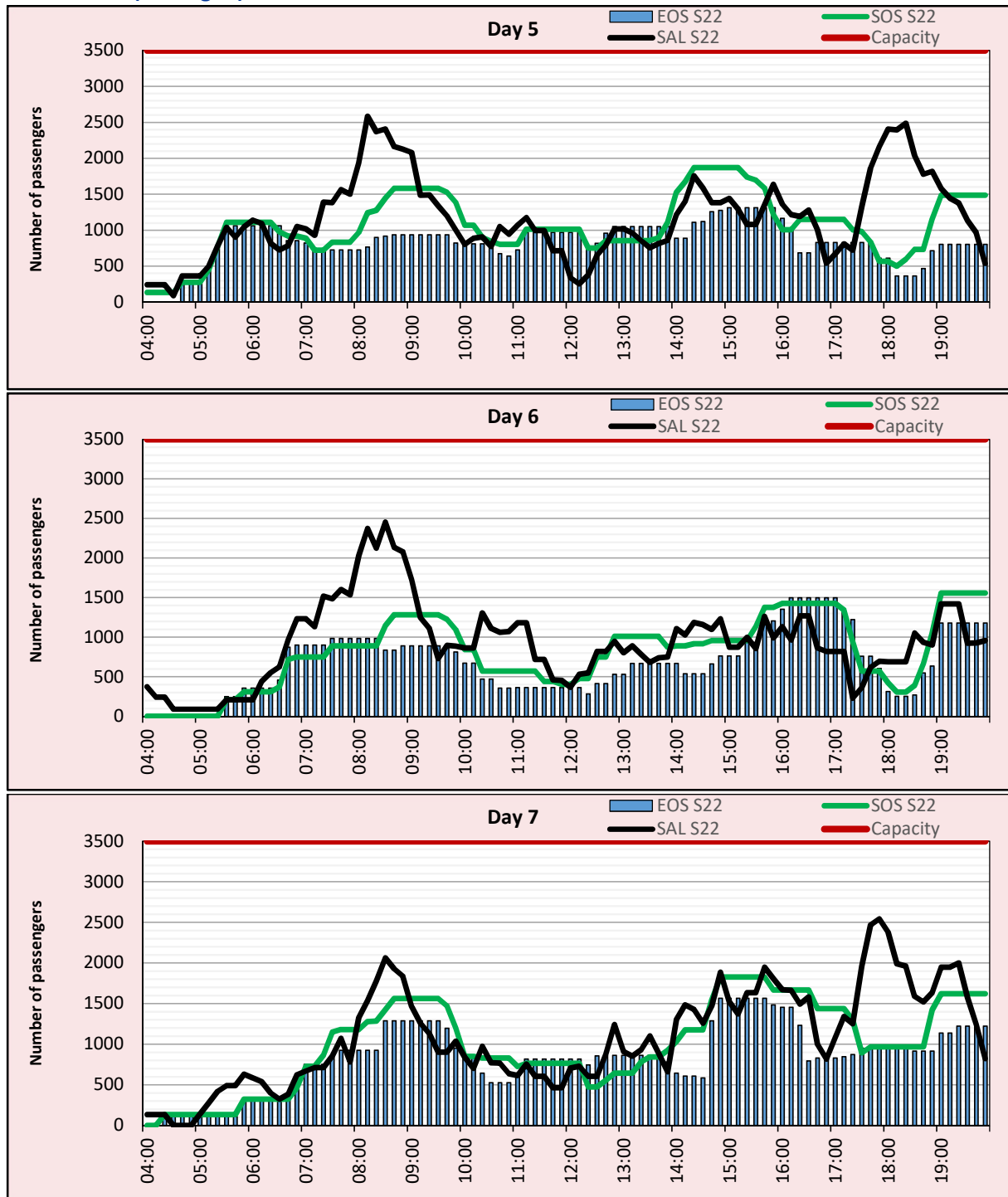
Terminal T2 (Schengen)



EOS S22 Typical Week Histogram – Passengers

ARRIVAL – 60 minute count rolling every 10 minutes (T60/10)

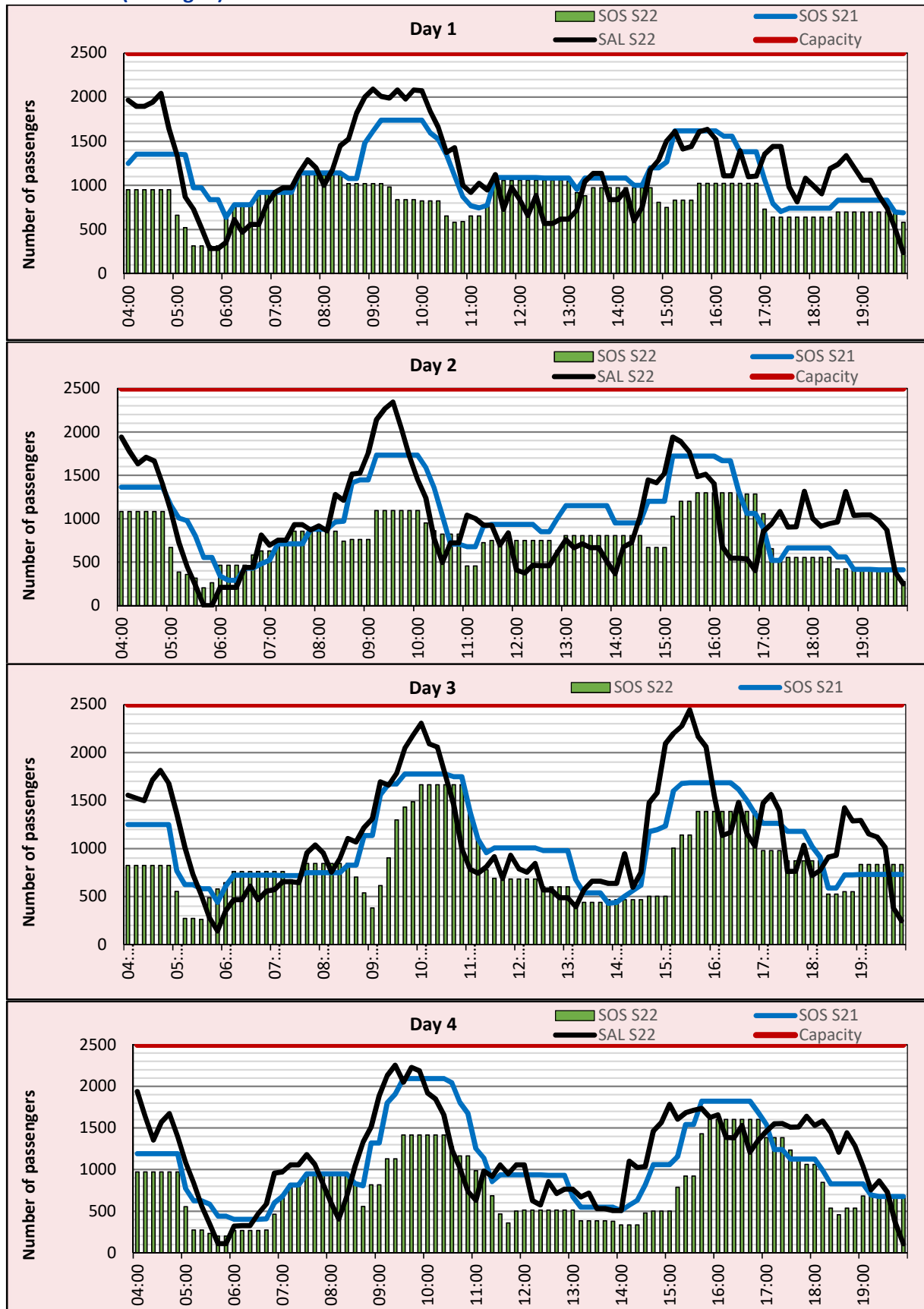
Terminal T2 (Schengen)



EOS S22 Typical Week Histogram – Passengers

DEPARTURE – 60 minute count rolling every 10 minutes (T60/10)

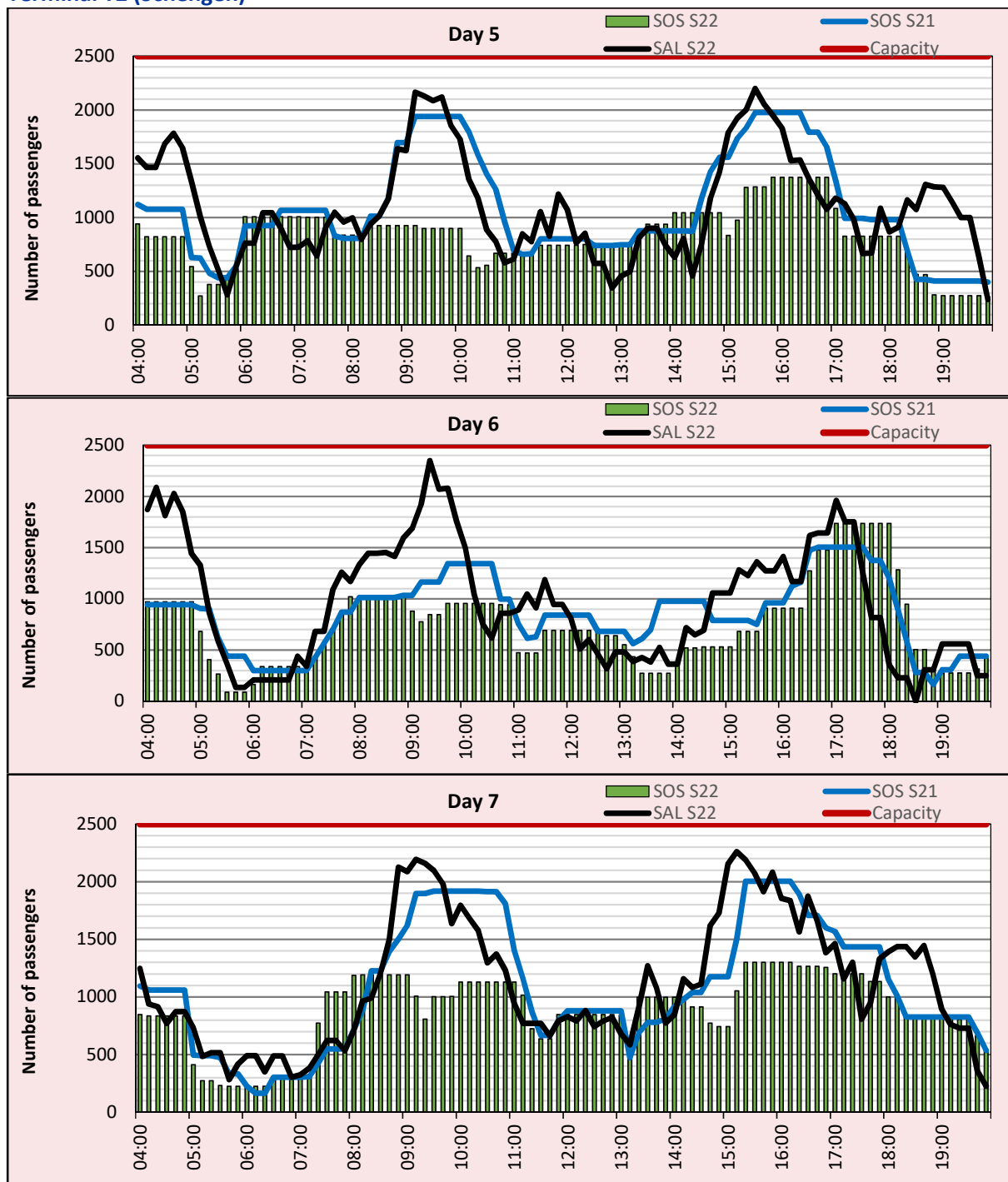
Terminal T2 (Schengen)



EOS S22 Typical Week Histogram – Passengers

DEPARTURE – 60 minute count rolling every 10 minutes (T60/10)

Terminal T2 (Schengen)



Glossary

Air Transport Movement (ATM)	Any aircraft movement which is either a scheduled, chartered passenger or cargo flight (IATA service type codes J, G, C, F, H, A).
Cargo Transport Movements (CATM)	Any aircraft movement which is either a scheduled or chartered or additional cargo flight (IATA service type codes F, H, A)
Demand	Unconstrained demand before any schedule adjustments have been made
GA/BA flights	General aviation and business aviation flights
End of Season (EOS)	Snapshot of schedule shortly after the end of the scheduling season (exact date given where used).
Historical slots (SHL)	Snapshot of historic schedule obtained from the previous equivalent season - as advised to airlines in the SHLs.
IATA Slot Conference (SC)	Snapshot after the end of the IATA Slot Conference
ICAO Size A	Aircraft with wingspan between 0.00m - 14.99m.
ICAO Size B	Aircraft with wingspan between 15.00m - 23.99m.
ICAO Size C	Aircraft with wingspan between 24.00m - 35.99m.
ICAO Size D	Aircraft with wingspan between 36.00m - 51.99m.
ICAO Size E	Aircraft with wingspan between 52.00m - 64.99m.
ICAO Size F	Aircraft with wingspan between 65.00m - 80.00m.
ICAO Size H	Helicopters
Initial Coordination (SAL)	Snapshot of schedule immediately after Initial Coordination is completed - as advised to airlines in the SALs.
Passenger Air Transport Movement (PATM)	Any aircraft movement, which is either a scheduled or chartered passenger flight (service type codes J, G, C).
Other Air Transport Movement (OATM)	Any aircraft movement, which is not either a scheduled, chartered passenger, GA/BA or cargo flight (service type codes E, I, K, L, O, P, T, W, X, Y)
Start of Season (SOS)	Snapshot of schedule shortly before the start of the scheduling season (exact date given below where used).
Time: UTC	Times shown are in Universal Time Constant (UTC).
Total Air Transport Movements (TATM)	Completely all aircraft movements in a given season including flights GA/BA (all IATA service type codes)
Typical week	Typical week for S22 is Mon 08AUG 2022 to Sun 14AUG 2022 Typical week for S21 is Mon 09AUG 2021 to Sun 15AUG 2021
<u>Data snapshot descriptions</u>	
S21 EOS	S21 schedule as cleared on 03NOV 2021
S22 SAL	S22 schedule as cleared on 02NOV 2021
S22 SOS	S22 schedule as cleared on 01APR 2022
S22 EOS	S22 schedule as cleared on 04NOV 2022

Slot mobility

No transfers or exchanges under Art. 10.8. within S22 season.

Monitoring report

Slot misuse

- no records for S22 season.

Late handback

- no records for S22 season.

Exemptions 14.1

- no records for S22 season.

Sanction

- **The additional fee was given to Bul Air for a repeated breach of the coordinated type of Aircraft or failure to comply with the criteria for inclusion in one of the noise categories 1 to 9 during the period of night noise restriction 2000 to 0355UTC according to AIP, LKPR AD 2.21** -

Other minor violation of the slot policy resulted only in warning given to the air carrier.

Coordination committee

The Coordination Committee has been established to advise and assist to the coordinator to carry out the following tasks in accordance with the requirements of the Law No. 49/1997 issued by the Ministry of Transport of the Czech Republic.

Its existence covers:

- examine the possibilities to increase the currently determined capacity of the airport,
- determine the ways of achieving a better utilisation of the capacity available,
- monitoring of the usage of the slots allocated.

The list of members :

Airline Operators Committee (AOC)
Air Navigation Services
Airport Prague
Smartwings
Czech Airlines
Ryanair
ABS Jets
Menzies Aviation
Czech Airlines Handling
Czech GH
ENES Cargo Prague
Civil Aviation Dept. (as observer)
Civil Aviation Authority (as observer)
Slot Coordination Czech Republic (as observer)

Main topic for the meeting of the Coordination Committee was the airport capacity presentation for S22 season. Offered capacities were approved by all the members.

Conclusion

This report provides the requested information and statistics for Vaclav Havel Airport Prague (PRG/LKPR) for season S22. It has been created by Slot Coordination Czech Republic for the next possible usage by DG Move.

Should you require more Information, do not hesitate to contact us at:

Slot Coordination Czech Republic

Aviatická 1017/2

Airport Prague

161 00 Prague 6 - Ruzyně

e-mail: slot.coord@prg.aero

WEB: www.slot-czech.cz