



# THE ANNUAL REPORT

SEASON

S23

# Prague Airport (PRG – LKPR)

Annual Report

Report Date: 21<sup>st</sup> November 2023

Summer Season S23

Period: 26<sup>th</sup> March 2023 – 28<sup>th</sup> October 2023

---

Page	Content
	<b>General</b>
2	Table of content, Introduction
3	Headlines
	<b>Analytic section</b>
4	Airport Capacity – Runway
5	Airport Capacity - Terminals and Parking Stands
6	SHL S23 - ATM Allocation by Operator
7	SAL S23 - ATM Allocation by Operator
8	SAL S23 - ATM Allocation and Slot Adjustment Distribution by Operator
9	SOS S23 - ATM Allocation by Operator
10	EOS S23 - ATM Allocation and Seats Capacity by Operators
11	EOS S23 Full Season – Total ATM Analysis
12	EOS S23 Full Season – Passenger ATM Seats Analysis
13	EOS S23 Full Season – Terminal Analysis
14	EOS S23 Full Season – Aircraft Size Analysis
15	EOS S23 Full Season – Seasonality (Movements and Seat Capacity)
16	EOS S23 Typical Week Histogram – Runway Allocation R60/10
17	EOS S23 Typical Week Histogram – Runway Allocation R10/5
19	EOS S23 Typical Week Histogram – Passengers Arrival – Terminal T1 Non-Schengen (T60/10)
20	EOS S23 Typical Week Histogram – Passengers Departure – Terminal T1 Non-Schengen (T60/10)
21	EOS S23 Typical Week Histogram – Passengers Arrival – Terminal T2 Schengen (T60/10) +
22	EOS S23 Typical Week Histogram – Passengers Departure – Terminal T2 Schengen(T60/10)
23	Glossary
	<b>Local information and data</b>
24	Slot mobility – transfers/exchanges
	Monitoring report – misuse, late handback, sanctions, exemption 14.1
	Coordination Committee
	<b>Report End</b>
25	Conclusion

## Introduction

This report contains the general total data for S23 season. Time UTC.

This report refers to Vaclav Havel Airport Prague.

It is Level 3 airport, IATA/ICAO: PRG/LKPR

The coordination software used: **Score, ver. 6.12.7.71**

The online coordination is in use.

The coordination process is conducted in full compliance with EU Reg. 95/93, 793/2004, IATA Worldwide Scheduling Guidelines, IATA Standard Schedules Information Manual and Czech Law, which says that Slot Coordination Czech Republic is delegated to achieve of Coordination function according to decision of the Civil Aviation Authority Czech Republic in accordance with the paragraph No.32, part 1 and 2 of Law No. 49/1997, about Civil Aviation and in accordance with Law No. 455/1991.

## Headlines

	S23 EOS	S23/S22 EOS	S22 EOS	S23 SOS	S23 SAL	S23 SHL
Total Air Transport Movements (TATM)	77 293	115,9%	66 665	70 817	92 876	58 776
Passenger Air Transport Movements (PATM)	64 390	121,2%	53 136	68 881	90 783	57 288
Cargo Air Transport Movements (CATM)	1 457	92,2%	1 580	1 486	2 077	1 483
Other Air Transport Movements (OATM)	1 622	88,1%	1 841	235	16	5
GA/BA Air Transport Movements (GABA)	9 824	97,2%	10 108	215	0	0
Total PATM Seats Capacity	11 270 019	122,0%	9 237 226	12 045 803	16 195 215	
Average Seats per PATM	175,0	100,7%	173,8	174,9	178,4	
Percentage of allocated slots cleared as requested				98,4%	88,9%	
Number of Passengers all Season	9 567 957	122,8%	7 790 312			

## Calendar of Coordination Activities S23 Season

SHL Deadline	<b>12SEP 2022</b>
Initial Submission Deadline	<b>06OCT 2022</b>
SAL Deadline	<b>03NOV 2022</b>
IATA Slot Conference	<b>15 – 18NOV 2022 (Melbourne)</b>
Series Return Deadline	<b>15JAN 2023</b>
Historics Baseline Date	<b>31JAN 2023</b>
Start of Season	<b>26MAR 2023</b>
End of Season	<b>28OCT 2023</b>

**S23 scheduling season ran from Sunday 26MAR 2023 to Saturday 28OCT 2023 (217 days)**

**S22 scheduling season ran from Sunday 27MAR 2022 to Saturday 29OCT 2022 (217 days)**

## Disclaimer

No warranty whether expressed or implied as to the completeness, accuracy, fitness for purpose, or satisfactory quality is given by Slot Coordination Czech Republic regarding the information in this report, which is provided by third parties. Accordingly, Slot Coordination Czech Republic excludes all liability with regard to such data.

The contents of this report may not be reproduced without the written consent of Slot Coordination Czech Republic

## Declared Airport Capacity

### Runway Capacity

S23					Change: S23 vs. S22			S22				
Periods		10mins						10mins			Periods	
Time (UTC)		ARR	DEP	Total				ARR	DEP	Total	Time (UTC)	
0:00	0:55	6	6	10	x	x	x	6	6	10	0:00	0:55
1:00	1:55	6	6	10	x	x	x	6	6	10	1:00	1:55
2:00	2:55	6	6	10	x	x	x	6	6	10	2:00	2:55
3:00	3:55	6	6	10	x	x	x	6	6	10	3:00	3:55
4:00	19:55	6	6	10	x	x	x	6	6	10	4:00	19:55
20:00	20:55	6	6	10	x	x	x	6	6	10	20:00	20:55
21:00	21:55	6	6	10	x	x	x	6	6	10	21:00	21:55
22:00	22:55	6	6	10	x	x	x	6	6	10	22:00	22:55
23:00	23:55	6	6	10	x	x	x	6	6	10	23:00	23:55

Periods		60mins						60mins			Periods	
Time (UTC)		ARR	DEP	Total				ARR	DEP	Total	Time (UTC)	
0:00	1:55		0								0:00	1:55
4:00	19:55	33	33	46	x	x	x	33	33	46	4:00	19:55

Periods		480mins						480mins			Periods	
Time (UTC)		Total						Total			Time (UTC)	
20:00	20:55	48**)			x			48			20:00	20:55
21:00	21:55										21:00	21:55
22:00	22:55										22:00	22:55
23:00	23:55										23:00	23:55
0:00	0:55										0:00	0:55
1:00	1:55										1:00	1:55
2:00	2:55	2:00	2:55									
3:00	3:55	3:00	3:55									

\*\* Take-offs and landings are only permitted for aircraft with an MTOW of less than 45t or the aircraft types with an MTOW 45t and higher listed in the "List of Aircrafts Permitted for Night Operation"

**Each particular aircraft is obliged to comply with standards for being listed in one of noise categories from 1 to 9!**

#### List of Aircrafts Permitted for Night Operation (according to the IATA code)

141, 142, 143, 146, 14F, 14X, 14Y, 14Z,  
 221, 223, 290, 295, 318, 319, 31N, 320, 32N, 32Q, 321, 32A, 32B, 32C, 32D,  
 332, 333, 338, 339, 342, 343, 345, 346, 351, 359, 380, 388  
 717, 734, 735, 736, 738, 739, 73C, 73E, 73G, 73H, 73J, 73W, 7M1, 7M7, 7M8,  
 7M9, 7S8, 74H, 74N, 752, 753, 75M, 75T, 75W, 763, 764, 76W, 772, 773, 77L,  
 77W, 781, 788, 789,  
 AB6, AR1, AR7, AR8, ARJ, CC6, CCX, E90, E95, GJ6, SU1, SU7, SU9

## Declared Airport Capacity

### Terminal Capacity

S23			Change: S23 vs. S22		S22		
Period		60mins		60mins	Period		
Terminal	Constraint				Constraint	Terminal	
Terminal T1 <i>Non-Schengen</i>	Gates	22	x	22	Gates	Terminal T1 <i>Non-Schengen</i>	
	PAX flow	ARR	1900	x	1900		ARR
		DEP	1900	x	1900		DEP
		Total	3800	x	3800		Total
Terminal T2 <i>Schengen</i>	Gates	28	x	28	Gates	Terminal T2 <i>Schengen</i>	
	PAX flow	ARR	3500	x	3500		ARR
		DEP	2500	x	2500		DEP
		Total	6000	x	6000		Total
Terminal T3 <i>GA/BA Special</i>	Gates	2	+1	1	Gates	Terminal T3 <i>GA/BA Special</i>	
	PAX flow	ARR	120	x	120		ARR
		DEP	70	x	70		DEP
		Total	190	x	190		Total

### Parking Stands

S23		Change: S23 vs. S22		S22	
Period	60mins		60mins	Period	
Wing span	Number of stands		Number of stands	Wing span	
total	51	x	51	total	
up to 80m	1	x	1	up to 80m	
from up to 65m	5	x	5	from up to 65m	
from up to 52m	2	x	2	from up to 52m	
from up to 38m	1	x	1	from up to 38m	
up to 36m	35	x	35	up to 36m	
up to 34,5m	2	x	2	up to 34,5m	
up to 29 m	5	x	5	up to 29 m	

# SHL S23 - ATM Allocation by Operator

Comparison between S23 SHL vs. S22 SHL

FULL SEASON ALLOCATION						
Operator			SHL S23 ATMs	SHL S22 ATMs	+/- change	S23 Rank
Aegean Airlines	AEE	A3	404	598	-194	26
Aer Lingus	EIN	EI	248	422	-174	35
Aeroflot	AFL	SU	0	2 604	-2 604	69
Air Arabia	ABY	G9	0	248	-248	69
Air Baltic	BTI	BT	248	310	-62	35
Air Cairo	MSC	SM	124	124	0	48
Air Canada	ACA	AC	0	304	-304	69
Air France	AFR	AF	1 172	1 674	-502	13
Air Malta	AMC	KM	154	186	-32	45
Air Montenegro	MNE	MNE	66	0	66	56
Air Serbia	ASL	JU	226	502	-276	42
Air Transat	TSC	TS	0	76	-76	69
American Airlines	AAL	AA	0	434	-434	69
Arkia Airlines	AIZ	IZ	14	0	14	67
ASL Airlines (CARGO)	TAY	3V	558	558	0	22
Austrian Airlines	AUA	OS	1 302	2 106	-804	11
Azerbaijan Airlines	AHY	J2	86	46	40	55
BA Cityflyer	CFE	CJ	0	372	-372	69
Bamboo Airways	BAV	QH	0	160	-160	69
Belavia	BRU	B2	0	434	-434	69
Blue Air	BLA	OB	112	254	-142	50
Blue Bird Airways	BBG	BZ	0	60	-60	69
British Airways	BAW	BA	1 521	2 046	-525	10
Brussels Airlines	BEL	SN	750	1 286	-536	19
Bul Air	BVL	LB	44	0	44	60
Bulgaria Air	LZB	FB	240	314	-74	41
Corendon Airlines	CAI	XC	28	90	-62	64
Croatia Airlines	CTN	OU	32	234	-202	63
Cyprus Airways	CYP	CY	0	124	-124	69
Czech Airlines	CSA	OK	1 939	11 563	-9 624	6
Delta Air Lines	DAL	DL	204	366	-162	43
EasyJet	EZY,EJU, EZS	EZY	3 636	5 334	-1 698	3
Egyptair	MSR	MS	0	102	-102	69
El Al Israel Airlines	ELY	LY	352	682	-330	29
Emirates	UAE	EK	434	434	0	24
Enter Air	ENT	ENT	0	132	-132	69
European air Charter	BUC	BUC	26	202	-176	65
Eurowings AG	EWG	EW	3 251	1 278	1 973	4
FedEx (CARGO)	FDX	FX	0	248	-248	69
Finnair	FIN	AY	900	898	2	16
Fly Play	FPY	OG	100	0	100	52
flydubai	FDB	FZ	382	434	-52	28
Flynas	KNE	XY	88	0	88	53
Flyr	FOX	FX	50	0	50	58
Georgian Airways	TGZ	A9	0	0	0	69
China Eastern Airlines	CES	MU	248	248	0	35
Iberia	IBE	IB	330	716	-386	31
Israir Airlines	ISR	6H	112	0	112	50
Jazeera Airways	JZR	J9	48	0	48	59
Jet2.com	EXS	LS	348	822	-474	30
KLM	KLM	KL	1 736	1 736	0	8
Korean Air	KAL	KE	248	248	0	35
LOT Polish Airlines	LOT	LO	1 800	2 542	-742	7
Lufthansa	DLH	LH	2 989	3 906	-917	5
Luxair	LGL	LG	186	248	-62	44
NEOS	NOS	NO	10	0	10	68
Norwegian	NAX,IBK	DY	974	668	306	14
Nouvelair	LBT	BJ	22	0	22	66
Onur Air	OHY	OHY	0	26	-26	69
Pegasus Airlines	PGT	PC	434	496	-62	24
Privat Wings	PWF	PWF	144	0	144	46
Qatar Airways	QTR	QR	400	868	-468	27
Qatar Airways (CARGO)	QTR	QR	62	0	62	57
Rossiya Airlines	SDM	FV	0	480	-480	69
Ryanair	RZR	FR	7 265	10 496	-3 231	2
S7 Airlines	SBI	S7	0	124	-124	69
SAS	SAS	SK	32	496	-464	35
SCAT Airlines	VSV	DV	0	0	0	69
Sichuan Airlines	CSC	3U	124	124	0	48
SkyUp Airlines	SQP	PQ	856	394	462	18
Smartwings	TVS	QS	13 819	13 219	600	1
Sunexpress Aviation	SXS	XQ	138	150	-12	47
SWISS	SWR	LX	1 254	1 622	-368	12
Tailwind Airlines	TWI	TWI	40	40	0	61
TAP Portugal	TAP	TP	480	594	-114	23
TAROM	ROT	RO	248	594	-346	35
Transavia	TRA	HV	274	282	-8	33
Transavia France	TVF	TO	256	248	8	34
Tunisair	TAR	TU	0	0	0	69
Turkish Airlines	THY	TK	868	1 302	-434	17
Turkish Airlines (CARGO)	THY	TK	88	0	88	53
Ukraine International	AUI	PS	618	372	246	21
United Airlines	UAL	UA	0	312	-312	69
UPS (CARGO)	UPS	UPS	620	620	0	20
Ural Airlines	SVR	U6	0	866	-866	69
Uzbekistan Airways	UZB	HY	36	0	36	62
Volotea	VOE	VOE	316	766	-450	32
Vueling	VLG	VY	928	1 240	-312	15
Wizz Air	WZZ,WUK	W6	1 734	1 642	92	9
<b>TOTAL</b>			<b>58 776</b>	<b>85 706</b>		

## SAL S23 - Slot Allocation by Operator

Historical, History Modification, New Flights, New Entrants

Operator	IATA	ICAO	Allocated Slots	Maintain Historics	Modify Historics	New Slots	New Entrant
Aegean Airlines	A3	AEE	406		406		
Aer Lingus	EI	EIN	292	248			44
Aeritalia	XZ	AEZ	372				372
Air Baltic	BT	BTI	310		248		62
Air Cairo	SM	MSC	310	124		186	
Air France	AF	AFR	1 736	808	364	564	
Air Malta	KM	AMC	186		124	62	
Air Moldova	9U	MLD	280		94		186
Air Montenegro	MNE	MNE	66	66			
Air Serbia	JU	ASL	868	248			620
Arkia Israel	IZ	AIZ	142		54	88	
ASL Airlines (CARGO)	3V	TAY	558	558			
Austrian Airlines	OS	AUA	1 302	1 302			
Azerbaijan Airlines	J2	AHY	86	86			
Blue Air	OB	BLA	372		186	62	124
Blue Bird Airways	BZ	BBG	186			186	
British Airways	BA	BAW	2 372	357	1 580	435	
Brussels Airlines	SN	BEL	1 020	102	648	270	
Bul Air	LB	BVL	44	44			
Bulgaria Air	FB	LZB	246	246			
Corendon Airlines	XC	CAI	28	28			
Croatia Airlines	OU	CTN	132	22	22	88	
Cyprus Airways	CY	CYP	186			186	
Czech Airlines	OK	CSA	8 081	1 147	680	6 254	
Delta Airlines	DL	DAL	346		204	142	
EasyJet	EZY	EZY	4 262	304	3 536	422	
El Al Israel Airlines	LY	ELY	682	310	62	310	
Emirates	EK	UAE	434		434		
Ethiad Airways	EY	ETD	434				434
European Air Charter	BUC	BUC	78	26		52	
Eurowings AG	EW	EWG	5 974	1 198	2 389	2 387	
Evelop Airline	EVE	EVE	10			10	
FedEx (CARGO)	FX	FDX	558			558	
Finnair	AY	FIN	900	90	810		
Fly Play	OG	FPY	124		124		
flydubai	FZ	FDB	434	310	124		
Flynas	XY	KNE	52			52	
China Eastern Airline	MU	CAS	248	248			
Iberia	IB	IBE	454	330		124	
Icelandair	FI	ICE	434				434
Israir Airlines	6H	ISR	192	124	34	34	
Jazeera Airways	J9	JZR	80			80	
Jet2.com	LS	EXS	614		372	242	
KLM	KL	KLM	2 170	1 736	434		
Korean Air	KE	KAL	248	248			
Kuwait Airways	KU	KAC	92				92
Loong Airlines	GJ	CDC	434			434	
LOT Polish Airlines	LO	LOT	2 248	78	1 798	372	
Lufthansa	LH	DLH	3 472	2 264	774	434	
Luxair	LG	LGL	248	93	93	62	
Mavi Gok Airlines	4M	MGH	90				90
Norwegian	DY	NOZ	1 426	582	414	430	
Nouvelair Tunisie	BJ	LBT	22	22			
Pegasus Airlines	PC	PGT	496		434	62	
Qatar Airways	QR	QTR	868		525	343	
Qatar Airways (CARGO)	QR	QTR	124		62	62	
Ryanair	FR	RZR	12 085	2 289	5 013	4 783	
SAS	SK	SAS	548		50	498	
Sichuan Airlines	3U	CSC	124	124			
Sky Express	GQ	SES	1 302				1 302
SkyUp Airlines	PQ	SQP	856	856			
SmartLynx Airlines	6Y	ART	10			10	
Smartwings	QS	TVS	18 798	9 814	4 384	4 600	
SunExpress	XQ	SXS	406		238		168
SWISS	LX	SWR	1 302	217	1 085		
Tailwind	TWI	TWI	146			146	
TAP Portugal	TP	TAP	868	240	248	70	310
TAROM	RO	ROT	248	248			
Transavia	HV	TRA	284	222	52	10	
Transavia France	TO	TVF	372	31	217		124
Turkish Airlines	TK	THY	1 302		868	434	
Turkish Airlines (CARGO)	TK	THY	186	62	124		
Ukraine International	PS	AUI	618	618			
UPS (CARGO)	UPS	UPS	620	620			
Volotea	VOE	VOE	570	78	260	232	
Vueling	VY	VLG	1 302	377	547	378	
Wizz Air	W6	WZZ	3 100	372	2 046	682	
<b>TOTAL</b>			<b>92 876</b>	<b>29 517</b>	<b>32 161</b>	<b>26 836</b>	<b>4 362</b>





# SOS S23 - ATM Allocation by Operator

Comparison between S23 SOS vs. S22 SOS

Operator	ICAO code	FULL SEASON ALLOCATION							S23 Rank
		SOS S23 ATMs	SOS S22 ATMs	+/- change	S23 Rank	SOS S23 seats capacity	SOS S22 seats capacity	+/- seats capacity change	
Aegean Airlines	AEE	434	406	28	28	77 024	70 596	6 428	26
Aer Lingus	EIN	292	248	44	35	50 808	43 152	7 656	34
Aeroflot	AFL	0	2 184	-2 184	71	0	353 444	-353 444	67
Air Baltic	BTI	362	250	112	33	54 450	36 250	18 200	33
Air Cairo	MSC	270	124	146	38	35 204	21 576	13 628	42
Air France	AFR	1 572	1 185	387	10	245 550	199 616	45 934	9
Air Malta	AMC	186	124	62	50	32 736	21 576	11 160	46
Air Moldova	MLD	268	0	268	39	43 944	0	43 944	37
Air Serbia	ASL	648	264	384	19	42 772	17 572	25 200	38
ASL Airlines (CARGO)	TAY	558	558	0	23	0	0	0	67
Austrian Airlines	AUA	1 294	1 255	39	12	155 280	150 600	4 680	18
Azerbaijan Airlines	AHY	126	86	40	57	18 156	12 556	5 600	56
Belavia	BRU	0	302	-302	71	0	38 052	-38 052	67
Blue Bird Airways	BBG	186	130	56	51	35 082	24 570	10 512	43
British Airways	BAW	2 010	1 908	102	8	367 152	359 360	7 792	7
Brussels Airlines	BEL	1 016	784	232	18	154 098	124 662	29 436	19
Bulgaria Air	LZB	276	280	-4	37	33 844	36 976	-3 132	45
Corendon Airlines	CAI	38	216	-178	69	7 182	40 824	-33 642	63
Croatia Airlines	CTN	132	32	100	55	13 024	2 432	10 592	60
Cyprus Airways	CYP	102	104	-2	61	18 360	18 720	-360	55
Czech Airlines	CSA	1 280	5 325	-4 045	13	224 824	884 828	-660 004	12
Delta Airlines	DAL	290	312	-22	36	61 550	70 200	-8 650	31
Easylet	EZY	3 376	4 104	-728	5	607 442	736 708	-129 266	5
EI AI	ELY	648	628	20	19	117 020	104 640	12 380	20
Emirates	UAE	434	430	4	28	156 240	153 348	2 892	17
Enter Air	ENT	101	135	-34	62	19 089	25 179	-6 090	53
European Air Charter	BUC	44	46	-2	68	7 216	7 864	-648	62
Eurowings AG	EWG	4 349	4 444	-95	3	767 774	751 650	16 124	3
Eznis Airways	EZA	86	0	86	64	22 016	0	22 016	50
Finnair	FIN	1 240	832	408	14	169 874	145 282	24 592	16
Fly PLAY	FLY	110	100	10	60	19 324	17 400	1 924	52
Flydubai	FDB	386	356	30	31	63 578	59 096	4 482	29
FLYNAS	KNE	60	380	-320	66	10 200	64 600	-54 400	61
Freebird Airlines	FHY	256	0	256	40	46 080	0	46 080	35
GA/BA Operators		211	138	73	48	810	98	712	65
Hainan Airlines	CHH	128	0	128	56	37 376	0	37 376	41
China Airlines	CAL	58	0	58	67	17 748	0	17 748	57
Iberia	IBE	454	336	118	27	81 924	71 222	10 702	25
Icelandair	ICE	172	0	172	53	27 520	0	27 520	48
Israir Airlines	ISR	194	140	54	49	34 947	25 668	9 279	44
Jazeera Airways	JZR	80	84	-4	65	13 920	14 112	-192	59
Jet2.com	EXS	472	386	86	26	83 746	68 854	14 892	23
KLM	KLM	2 026	1 724	302	7	292 576	255 868	36 708	8
Korean Air	KAL	230	0	230	46	66 930	0	66 930	28
LOT Polish Airlines	LOT	1 976	1 676	300	9	193 708	132 960	60 748	14
Lufthansa	DLH	3 379	3 002	377	4	541 156	456 024	85 132	6
Luxair	LGL	248	186	62	43	18 848	14 136	4 712	54
Norwegian	NAX	1 202	978	224	17	223 572	181 884	41 688	13
Other Cargo Operators		0	147	-147	71	0	0	0	67
Other Flights		19	242	-223	70	4	0	4	66
Other PAX Charters		331	13	318	34	58 188	1 526	56 662	32
Pegasus Airlines	PGT	508	438	70	24	95 126	82 938	12 188	22
Private Wings	PUF	216	82	134	47	3 888	1 476	2 412	64
Qatar Airways	QTR	434	400	34	28	61 632	93 060	-31 428	30
Qatar Airways (CARGO)	QTR	124	124	0	58	0	0	0	67
Rossiya Airlines	SDM	0	114	-114	71	0	15 202	-15 202	67
Ryanair	RFR	8 922	7 087	1 835	2	1 689 106	1 343 245	345 861	2
SalamAir	OMS	96	0	96	63	20 352	0	20 352	51
SAS	SAS	238	134	104	45	38 096	20 378	17 718	40
SCAT Airlines	VSV	124	0	124	58	23 436	0	23 436	49
SkyUp Airlines	SQP	0	800	-800	71	0	151 200	-151 200	67
Smartwings	TVS	16 853	15 874	979	1	3 095 477	3 010 813	84 664	1
SunExpress	SXS	364	138	226	32	68 796	26 082	42 714	27
SWISS	SWR	1 302	1 423	-121	11	172 822	182 226	-9 404	15
Tailwind Airlines	TWI	252	66	186	41	44 310	11 088	33 222	36
TAP Portugal	TAP	474	480	-6	25	83 064	86 224	-3 160	24
TAROM	ROT	248	248	0	43	29 418	28 678	740	47
ToMontenegro	MNE	146	68	78	54	16 936	7 888	9 048	58
Transavia	TRA	598	653	-55	22	112 644	123 417	-10 773	21
Turkish Airlines	THY	1 216	1 112	104	16	228 874	212 260	16 614	11
Turkish Airlines (CARGO)	THY	180	186	-6	52	0	0	0	67
Ukraine International	AUI	0	518	-518	71	0	89 240	-89 240	67
UPS (CARGO)	UPS	620	612	8	21	0	0	0	67
Ural Airlines	SVR	0	0	0	71	0	0	0	67
Volotea	VOE	250	480	-230	42	41 160	80 976	-39 816	39
Vueling	VLG	1 228	1 144	84	15	235 680	214 256	21 424	10
Wizz Air	WZZ	2 814	2 242	572	6	615 120	475 560	139 560	4
<b>TOTAL</b>		<b>70 817</b>	<b>71 959</b>			<b>12 045 803</b>	<b>12 256 706</b>		

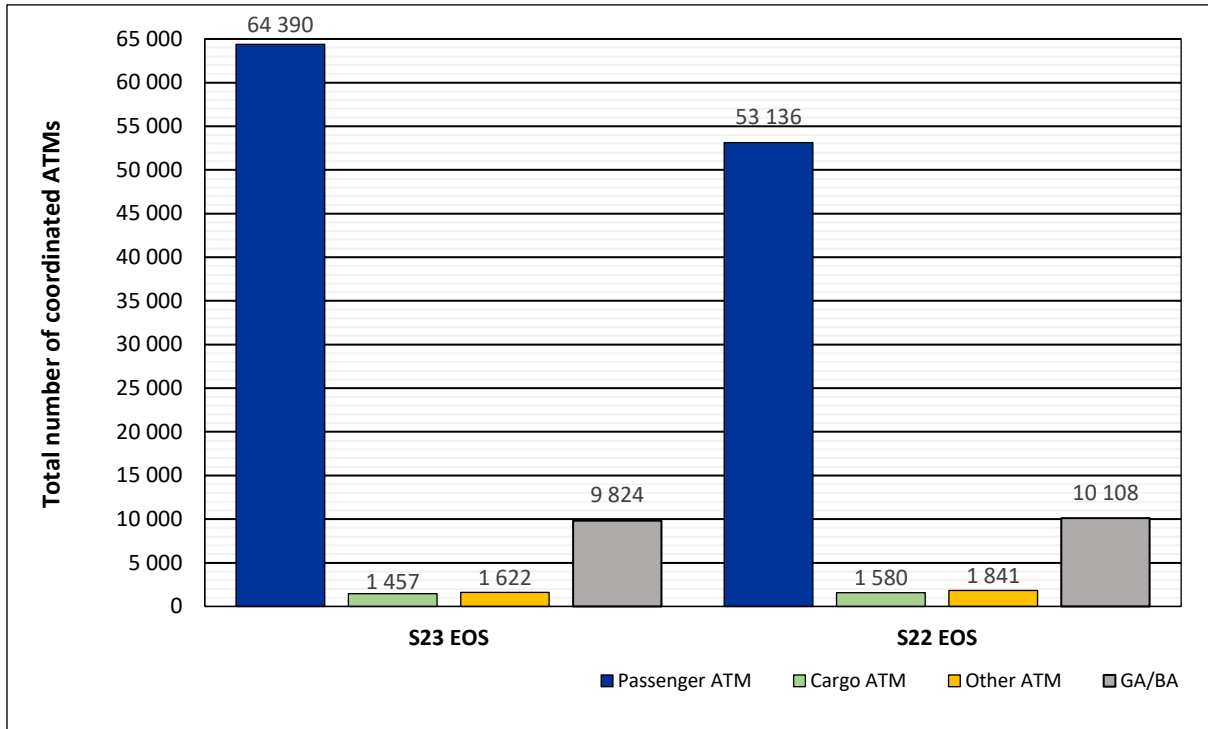
# EOS S23 - ATM Allocation and Seats Capacity and pax numbers by Operators

Comparison S23 EOS vs. S22 EOS – ATM + Seats Capacity + PAX numbers

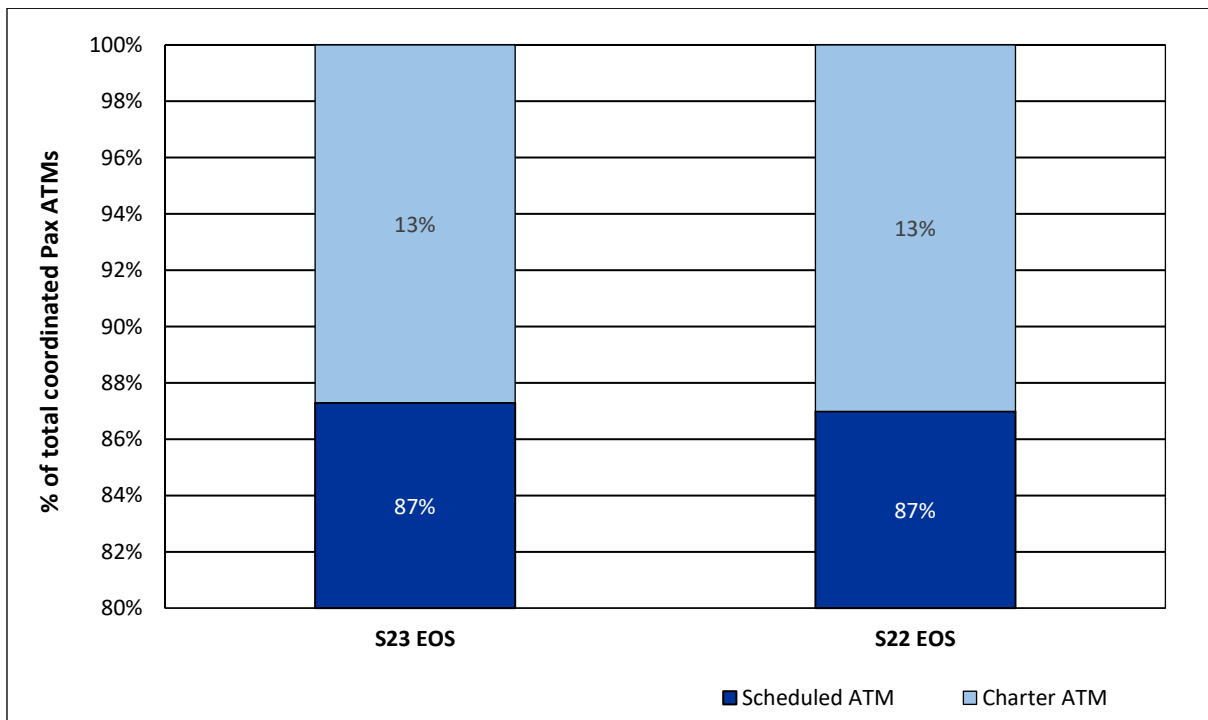
Operator	IATA	ICAO	FULL SEASON ALLOCATION										
			EOS S23 ATMs	EOS S22 ATMs	+/- change	S23 Rank	EOS S23 seats capacity	EOS S22 seats capacity	+/- seats capacity change	EOS S23 PAX numbers	EOS S22 PAX numbers	+/- PAX numbers change	S23 Rank
Aegean Airlines	A3	AEE	434	370	64	30	77 860	64 846	13 014	68 142	53 772	14 370	24
Aer Lingus	EI	EIN	292	246	46	36	50 808	42 804	8 004	44 664	35 786	8 878	32
Air Baltic	BT	BTI	360	232	128	34	55 048	33 190	21 858	44 546	28 836	15 710	33
Air Cairo	SM	MSC	184	122	62	48	20 240	21 228	-988	17 845	17 181	664	45
Air France	AF	AFR	1 542	1 232	310	12	240 428	208 491	31 937	205 568	181 233	24 335	9
Air Malta	KM	AMC	186	154	32	47	32 736	26 976	5 760	29 868	24 579	5 289	39
Air Montenegro	MNE	MNE	144	66	78	53	16 832	7 784	9 048	12 767	6 111	6 656	52
Air Serbia	JU	ASL	577	226	351	23	41 812	15 064	26 748	31 918	11 746	20 172	37
AMC Airlines	AMV	AMV	29	0	29	71	5 394	0	5 394	4 868	0	4 868	63
Arkia Israeli Airlines	IZ	AIZ	0	98	-98		0	17 397	-17 397	0	13 721	-13 721	
ASL Airlines (CARGO)	3V	TAY	534	532	2	24	0	0	0	0	0	0	
Austrian Airlines	OS	AUA	1 290	1 218	72	14	155 392	146 780	8 612	112 229	115 796	-3 567	18
Azerbaijan Airlines	J2	AHY	126	80	46	55	18 448	10 672	7 776	12 938	9 004	3 934	51
BA Cityflyer	CJ	CFE	16	0	16	73	1 568	0	1 568	957	0	957	69
Blue Air	OB	BLA	0	180	-180		0	32 726	-32 726	0	24 537	-24 537	
Blue Bird Airways	BZ	BBG	54	27	27	63	10 134	5 021	5 113	7 117	3 214	3 903	58
British Airways	BA	BAW	1 927	1 344	583	8	352 412	255 192	97 220	245 165	207 176	37 989	7
Brussels Airlines	SN	BEL	1 005	738	267	19	149 811	108 621	41 190	122 851	91 097	31 754	16
Bul Air	LB	BVL	2	43	-41	75	296	6 362	-6 066	144	5 851	-5 707	71
Bulgaria Air	FB	LZB	270	216	54	39	35 956	26 740	9 216	30 410	21 853	8 557	38
Corendon Airlines	XC	CAI	40	31	9	68	7 560	5 823	1 737	7 502	5 439	2 063	57
Croatia Airlines	OU	CTN	132	32	100	54	13 530	2 840	10 690	8 070	2 145	5 925	55
Cyprus Airways	CY	CYP	84	4	80	59	15 120	300	14 820	11 149	356	10 793	54
Czech Airlines	OK	CSA	886	847	39	20	158 849	140 152	18 697	113 854	111 940	1 914	17
Delta Airlines	DL	DAL	286	202	84	38	60 706	45 453	15 253	56 894	42 158	14 736	29
EasyJet	EZY	EZY	3 284	3 232	52	5	578 734	561 278	17 456	515 081	482 758	32 323	5
El Al Israel	LY	ELY	617	396	221	21	110 773	61 162	49 611	99 615	59 430	40 185	20
Emirates	EK	UAE	434	428	6	30	156 240	154 266	1 974	135 138	120 311	14 827	14
Enter Air	ENT	ENT	97	63	34	58	18 333	11 907	6 426	15 741	9 921	5 820	49
European Air Charter	BUC	BUC	45	22	23	66	7 396	3 608	3 788	6 528	3 333	3 195	59
Eurowings AG	EW	EWG	4 270	3 182	1 088	4	754 516	532 320	222 196	534 208	361 175	173 033	4
Finnair	AY	FIN	1 080	793	287	18	149 522	133 122	16 400	110 377	105 936	4 441	19
Fly Play	OG	FPY	110	100	10	57	19 624	19 776	-1 648	16 970	13 707	3 263	47
flydubai	FZ	FDB	381	350	31	32	63 376	58 128	5 248	47 929	40 783	7 146	30
Flynas	XY	KNE	62	112	-50	61	10 540	19 040	-8 500	7 516	5 649	1 867	56
Flyr A/S	FS	FOX	0	76	-76		0	12 474	-12 474	0	6 795	-6 795	
Freebird Airlines	FH	FHY	71	0	71	60	12 856	0	12 856	11 931	0	11 931	53
GA/BA Operators			9 824	10 108	-284	2	0	0	0	18 516	17 449	1 067	44
China Airlines	CI	CAL	58	0	58	62	17 748	0	17 748	16 434	0	16 434	48
Iberia	IB	IBE	512	356	156	26	92 790	65 586	27 204	78 929	53 779	25 150	21
Icelandair	FI	ICE	170	0	170	49	27 200	0	27 200	23 127	0	23 127	42
Israir Airlines	6H	ISR	146	130	16	52	26 325	23 448	2 877	20 108	18 323	1 785	43
Jazeera airways	J9	JZR	52	48	4	64	9 048	8 352	696	5 762	5 550	212	60
Jet2.com	LS	EXS	483	386	97	28	86 203	69 038	17 165	78 352	60 685	17 667	22
KLM	KL	KLM	1 883	1 489	394	9	276 648	232 888	43 760	236 460	197 395	39 065	8
Korean Air	KE	KAL	230	2	228	45	66 930	260	66 670	62 483	12	62 471	27
LOT Polish Airlines	LO	LOT	1 805	1 731	74	10	179 488	167 522	11 966	132 923	133 730	-807	15
Lufthansa	LH	DLH	2 835	2 604	231	6	438 023	388 832	49 191	373 886	327 739	46 147	6
Luxair	LG	LGL	246	186	60	43	18 696	14 136	4 560	14 110	9 123	4 987	50
Mavi Gok Airlines	4M	MGH	28	0	28	72	5 394	0	5 394	5 130	0	5 130	62
NEOS	NO	NOS	2	11	-9	76	372	3 949	-3 577	372	3 193	-2 821	70
Norwegian	DY	NOZ	1 202	978	224	16	224 292	182 540	41 752	184 817	150 918	33 899	12
Nouvelair Tunisia	BJ	LBT	36	28	8	69	6 372	4 956	1 416	5 652	4 559	1 093	61
Other Cargo Operators			47	134	-87	65	0	0	0	0	0	0	
Other Flights			1 622	1 839	-217	11	0	0	0	3 686	8 312	-4 626	65
Other PAX Charters			157	98	59	51	66 199	12 774	53 425	17 197	7 663	9 534	46
Pegasus Airlines	PC	PGT	496	438	58	27	93 786	83 159	10 627	73 705	67 969	5 736	23
Privat Wings	PWF	PWF	212	155	57	46	3 827	3 014	813	1 406	965	441	68
Qatar Airways	QR	QTR	524	398	126	25	72 972	52 780	20 192	65 167	44 874	20 293	26
Qatar Airways (CARGO)	QR	QTR	120	128	-8	56	0	0	0	0	0	0	
Ryanair	FR	RYR	9 082	7 244	1 838	5	1 719 286	1 373 276	346 010	1 589 076	1 236 580	352 496	2
Salam Air	OV	OMS	42	6	36	67	8 904	1 272	7 632	4 498	625	3 873	64
SAS	SK	SAS	245	84	161	44	38 944	13 662	25 282	25 837	10 312	15 525	41
Smartwings	QS	TVS	15 022	13 418	1 604	1	2 802 054	2 486 935	315 119	2 414 359	2 156 631	257 728	1
SunExpress	XQ	SXS	364	132	232	33	68 796	24 354	44 442	60 150	23 584	36 566	28
SWISS	LX	SWR	1 308	1 242	66	13	200 137	167 608	32 529	157 471	126 441	31 030	13
Tailwind	TWI	TWI	291	46	245	37	52 839	7 776	45 063	42 332	6 901	35 431	35
TAP Portugal	TP	TAP	470	434	36	29	83 392	77 780	5 612	66 327	64 162	2 165	25
TAROM	RO	ROT	248	248	0	42	8 694	29 080	-20 386	26 617	24 936	1 681	40
Transavia	HS	TRA	268	232	36	40	50 652	43 848	6 804	44 179	36 754	7 425	34
Transavia France	TO	TVF	296	258	38	35	55 712	48 277	7 435	47 865	36 481	11 384	31
Turkish Airlines	TK	THY	1 204	836	368	15	226 739	160 584	66 155	186 492	128 319	58 173	11
Turkish Airlines (CARGO)	TK	THY	168	188	-20	50	0	0	0	0	0	0	
Ukraine International	PS	AUI	0	4	-4		0	498	-498	0	404	-404	
UPS (CARGO)	5X	UPS	588	590	-2	22	0	0	0	0	0	0	
Uzbekistan Airways	HY	UZB	32	48	-16	70	5 040	7 200	-2 160	2 889	4 308	-1 419	66
Volotea	V7	VOE	250	464	-214	41	41 112	78 684	-37 572	38 874	72 685	-33 811	36
Vueling	VY	VLG	1 148	920	228	17	221 184	171 654	49 530	199 644	157 896	41 748	10
Wizz Air	W9	WZZ	2 720	2 030	690	7	594 915	434 954	159 961	550 976	367 726	183 250	3
World2fly	ZW	WFL	6	0	6	74	2 592	0	2 592	1 649	0	1 649	67
<b>TOTAL</b>			<b>77 293</b>	<b>66 665</b>			<b>11 296 155</b>	<b>1 966 670</b>		<b>9 567 957</b>	<b>7 790 312</b>		

## EOS S23 Full Season - Total ATM Analysis

### Passenger ATMs vs. Cargo ATMs vs. Other ATMs vs. GA/BA

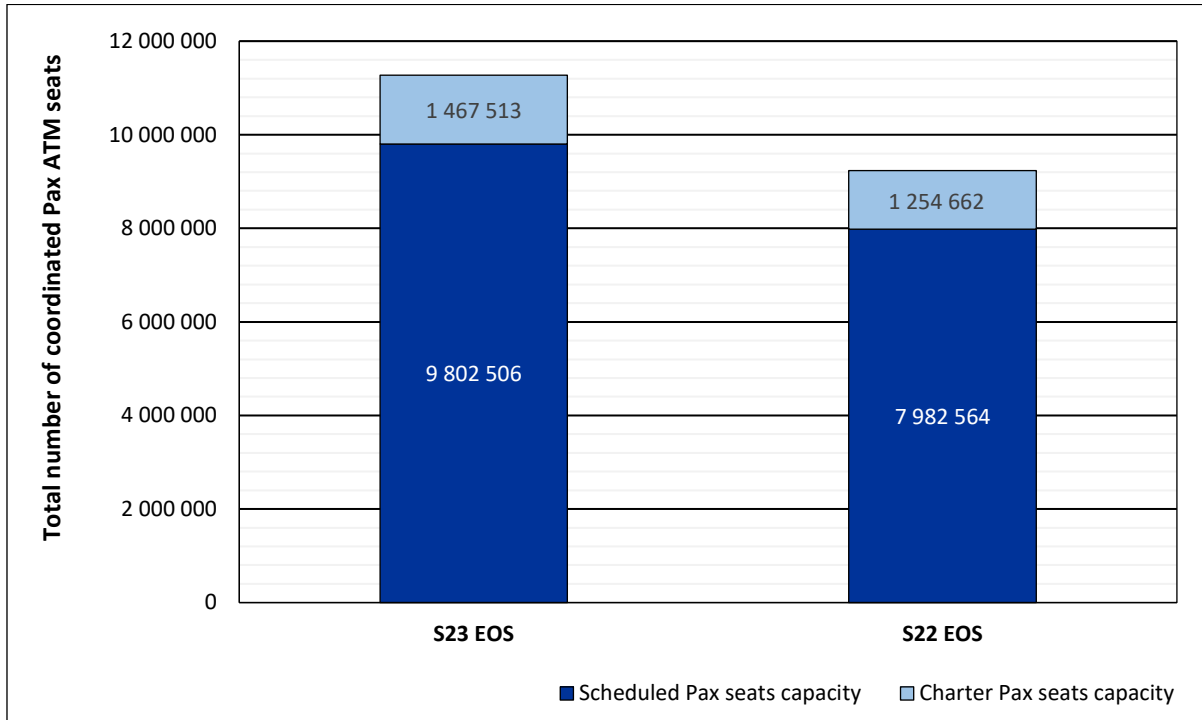


### Passenger ATMs: Scheduled vs. Charter

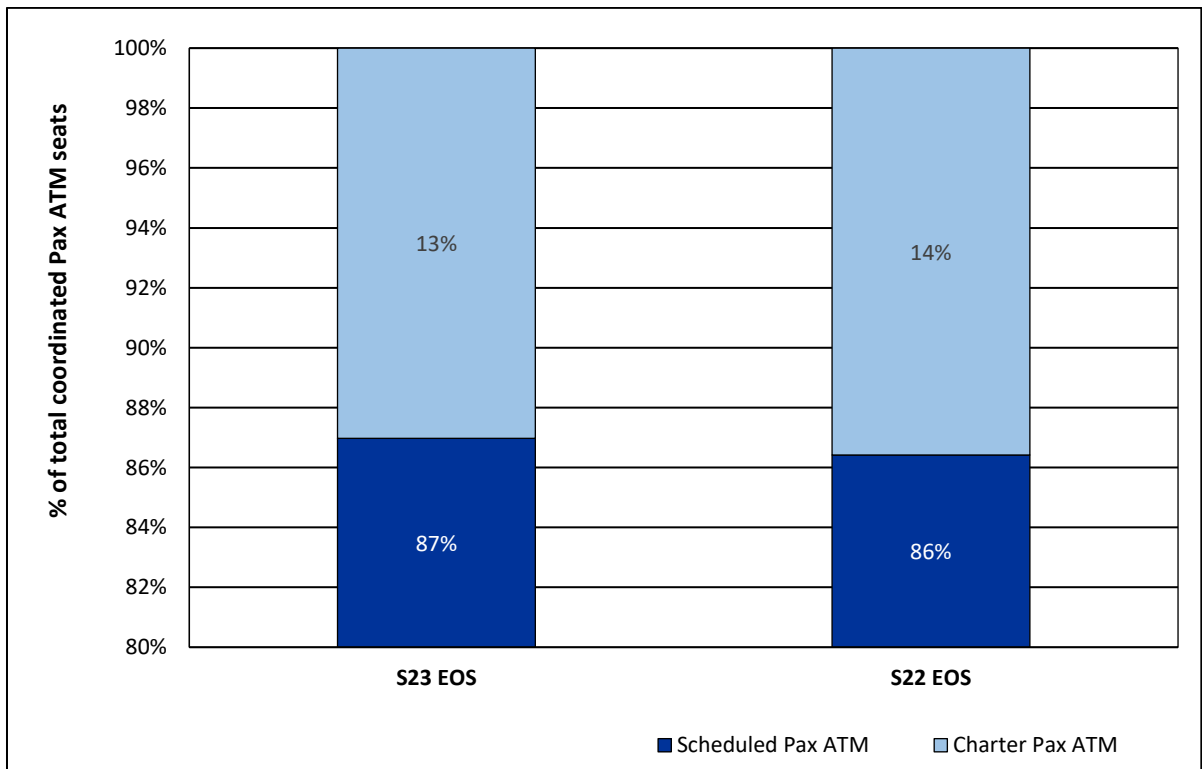


# EOS S23 Full Season - Passenger ATM Seats Capacity Analysis

## Passenger ATM seats: Scheduled vs. Charter

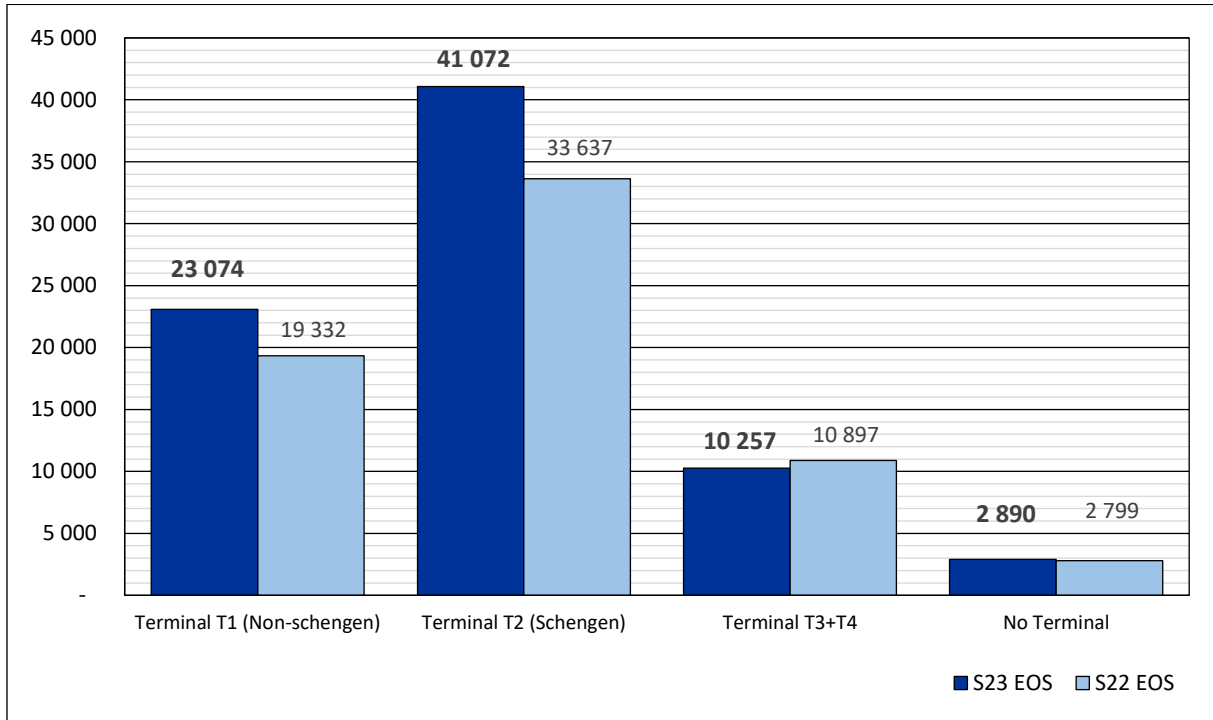


## Passenger ATM seats: Schedule vs. Charter



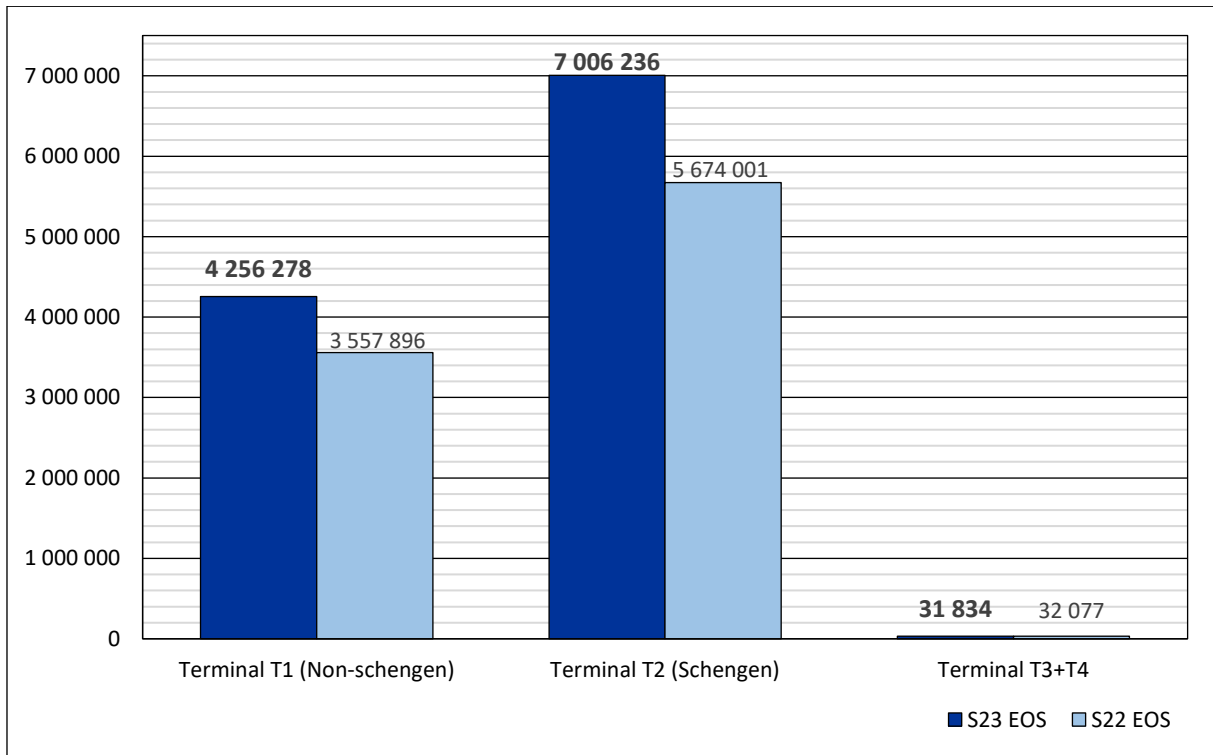
## EOS S23 Full Season - Terminal Analysis

### Total Air Transport Movements (total allocated for season)



Note: Terminal T3 - special charter flights, special flights and GA/BA flights are included  
Terminal T4 – government, state flights

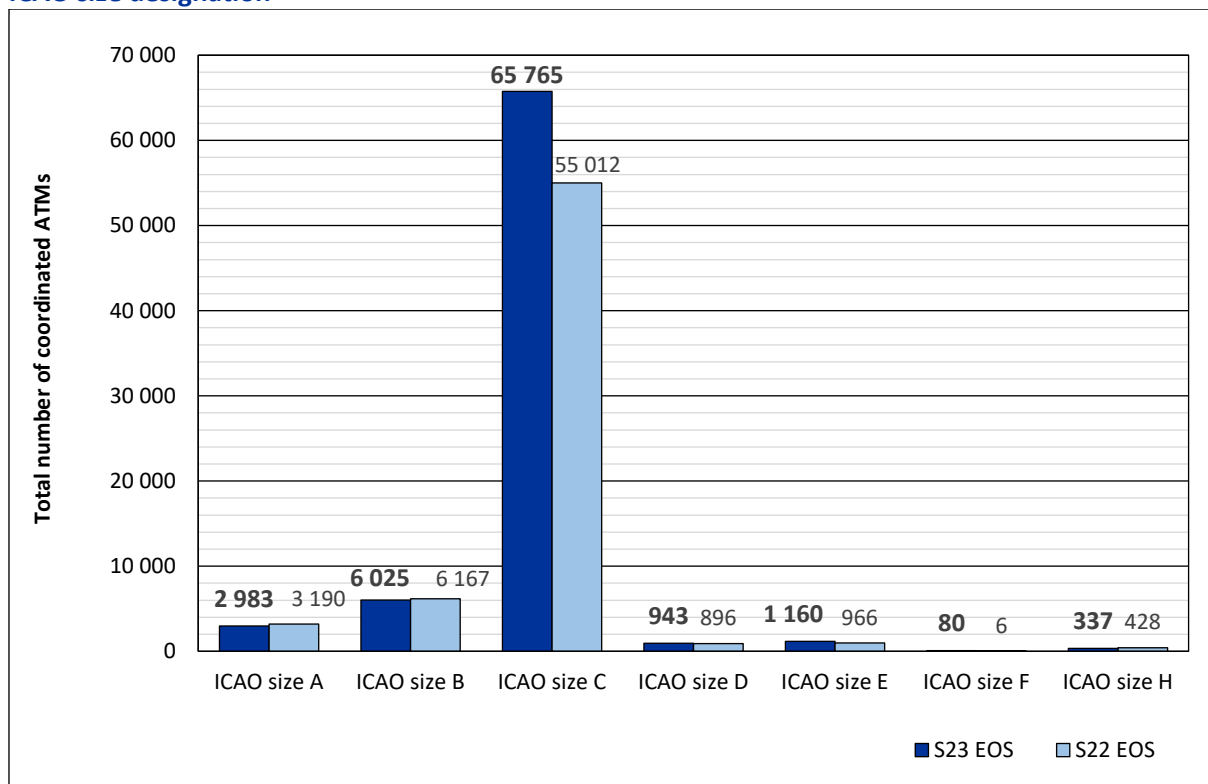
### Air Transport Movement Seats Capacity (total allocated for season)



Note: Terminal T3 - special charter flights are included ONLY  
Terminal T4 – government, state flights

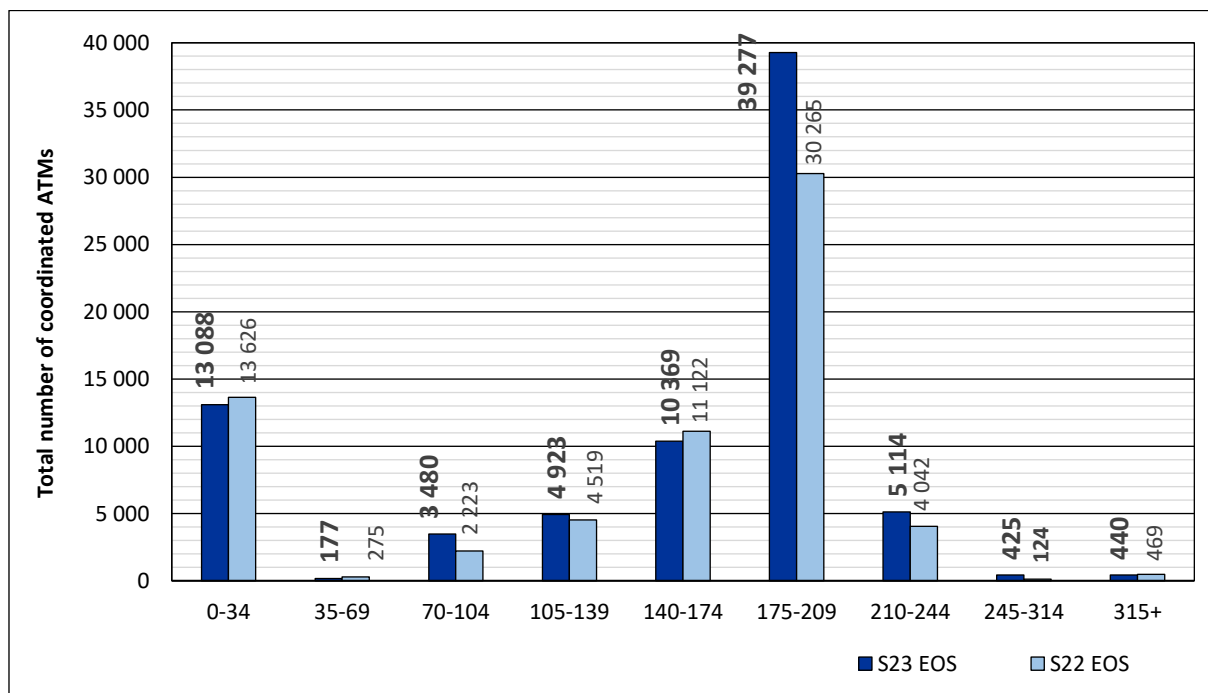
## EOS S23 Full Season - Aircraft Size Analysis

### ICAO size designation



Note: See Glossary for definitions of ICAO Size groupings

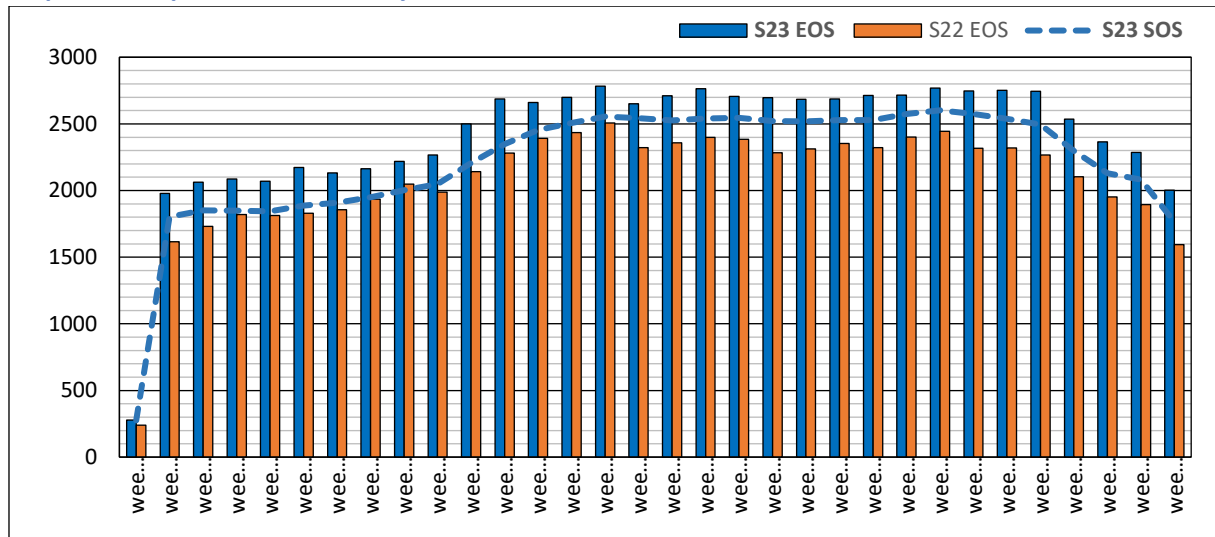
### Air Transport Movement seat distribution



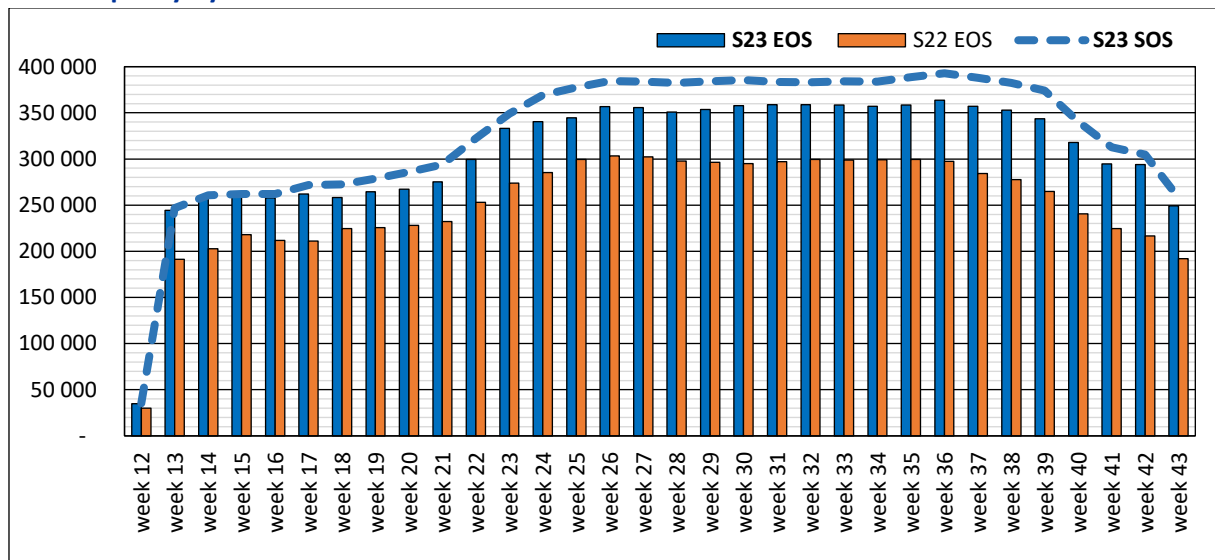
Note: Cargo services with 0 seats are included in the first seat band „0-34“

# EOS S23 Full Season - Seasonality

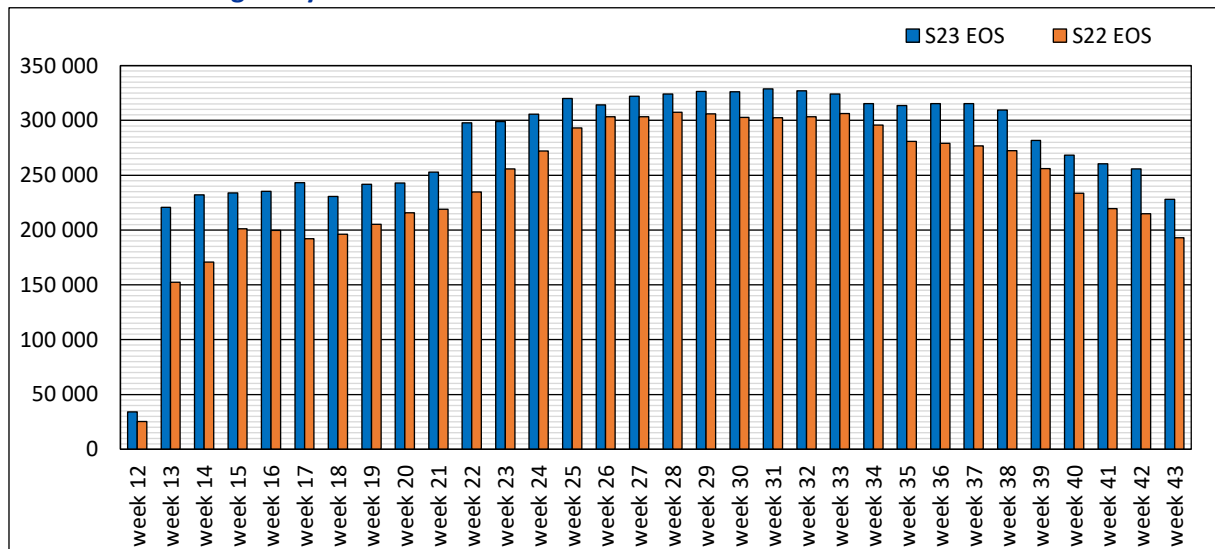
## Airport Transport Movements by week of season



## Seats Capacity by week of season

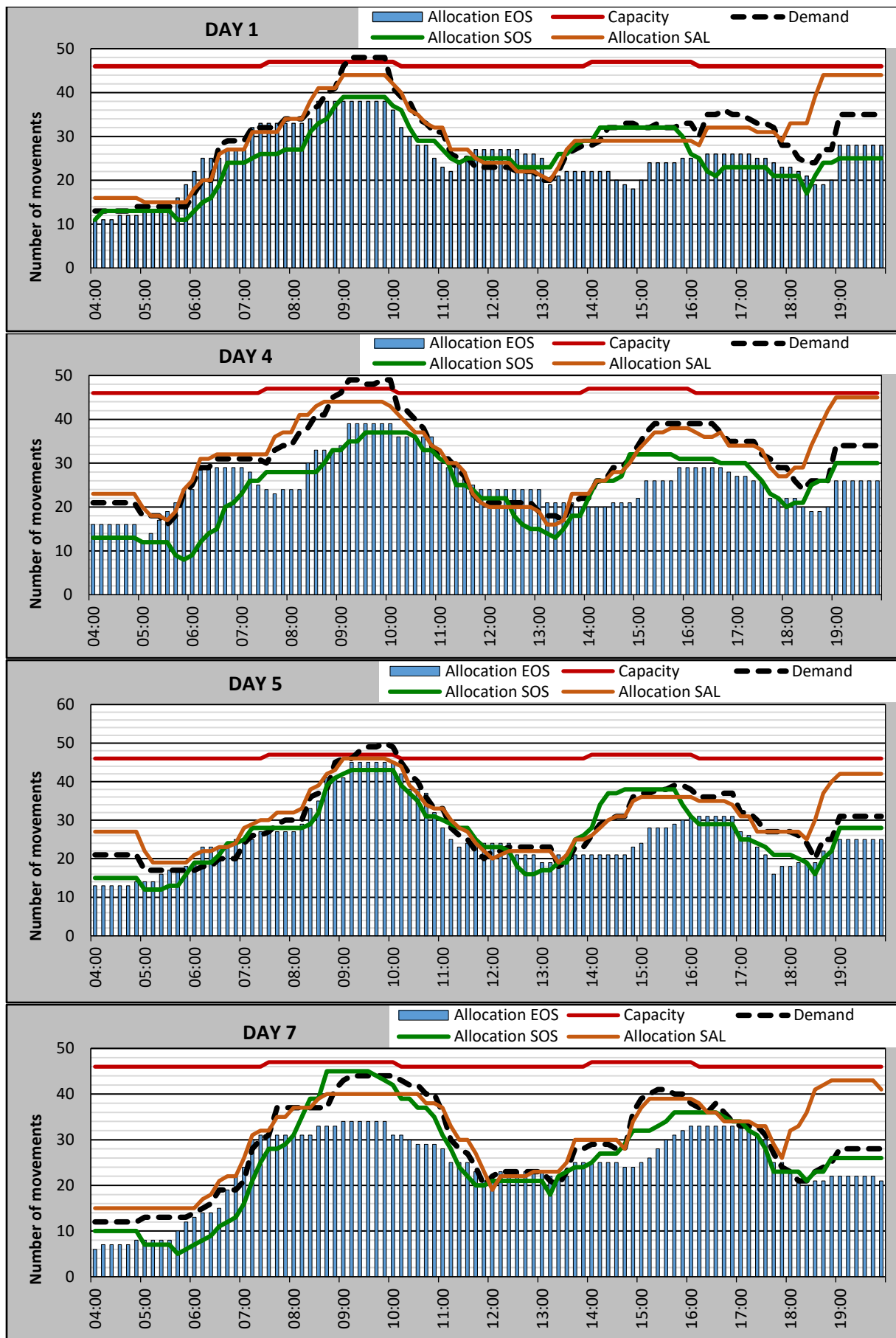


## Number of Passengers by week of season



# EOS S23 Typical Week Histogram – Runway Allocation – top days

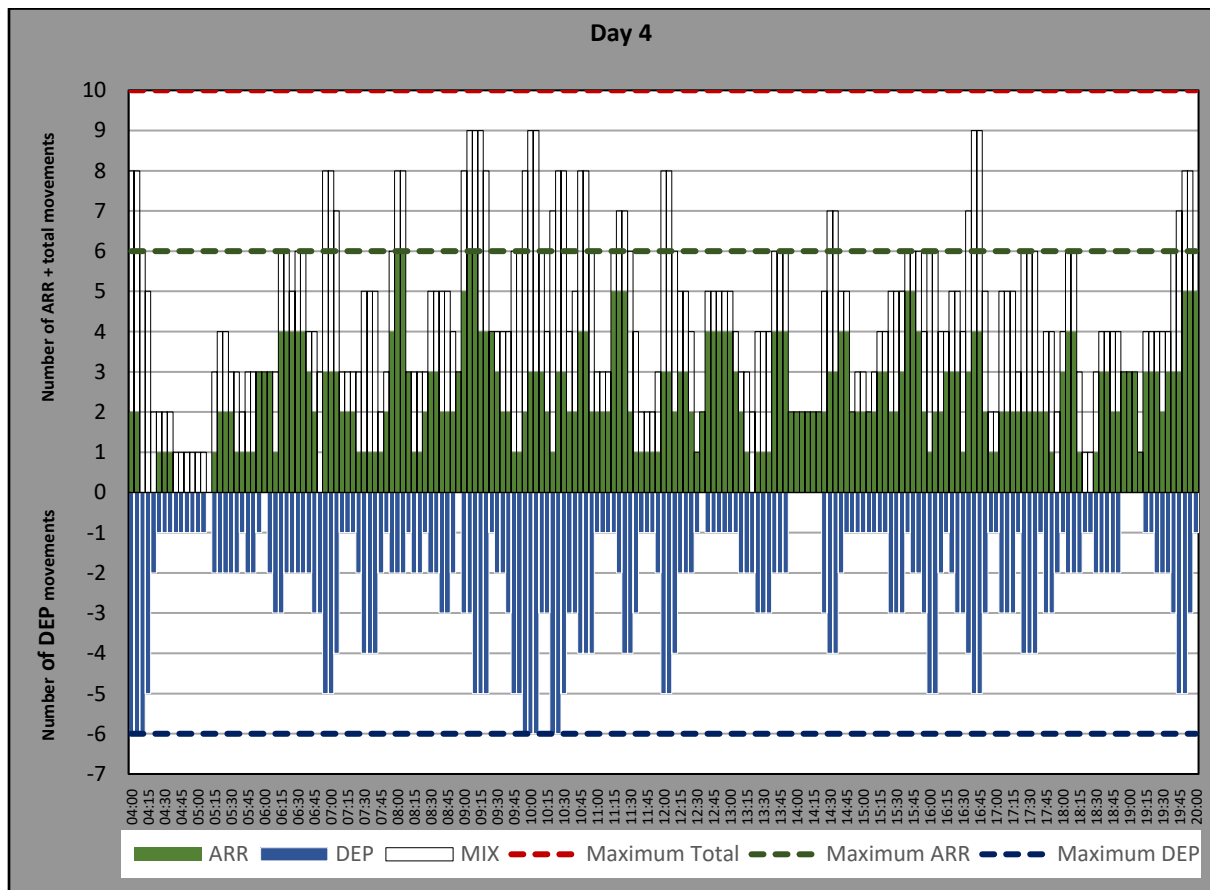
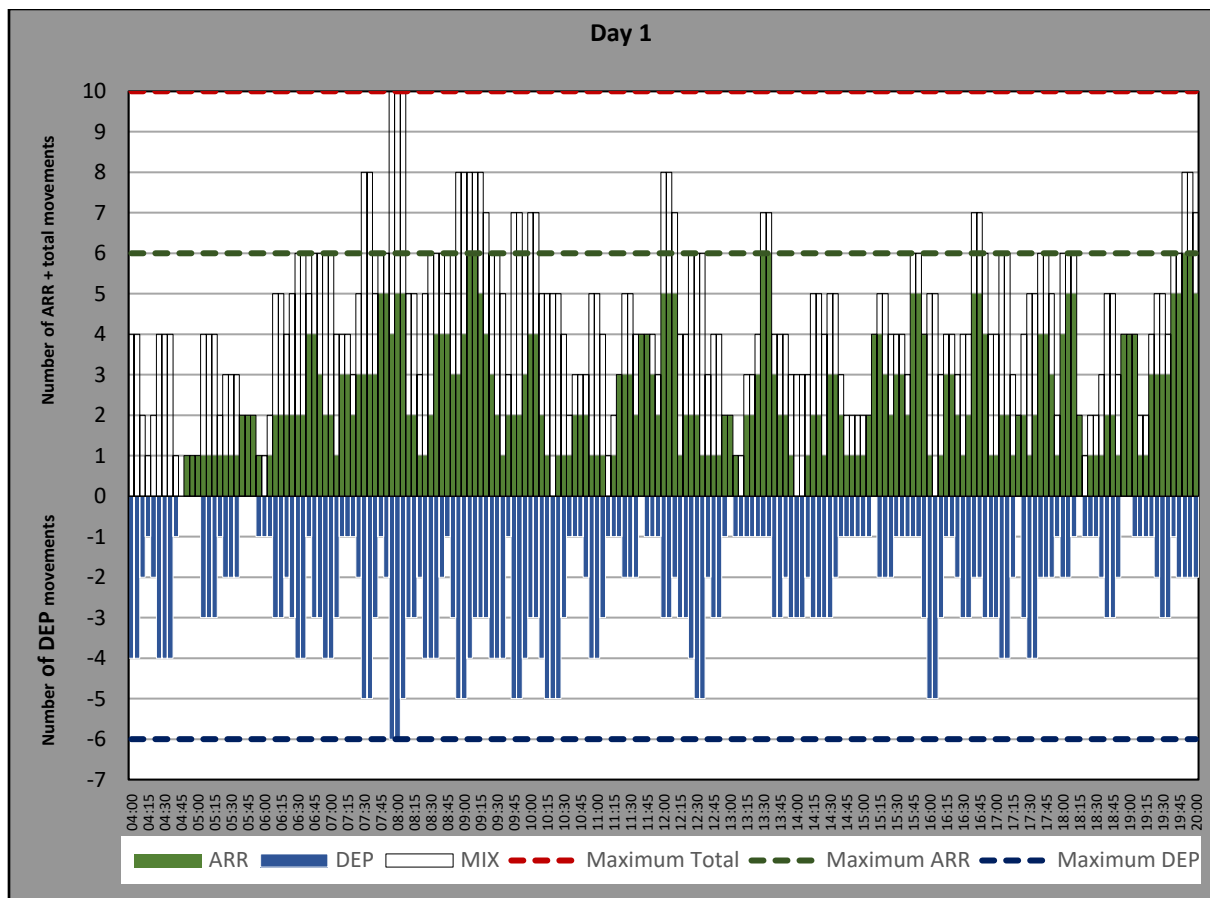
TOTAL Movements – 60 minute count rolling every 10 minutes (R60/10)





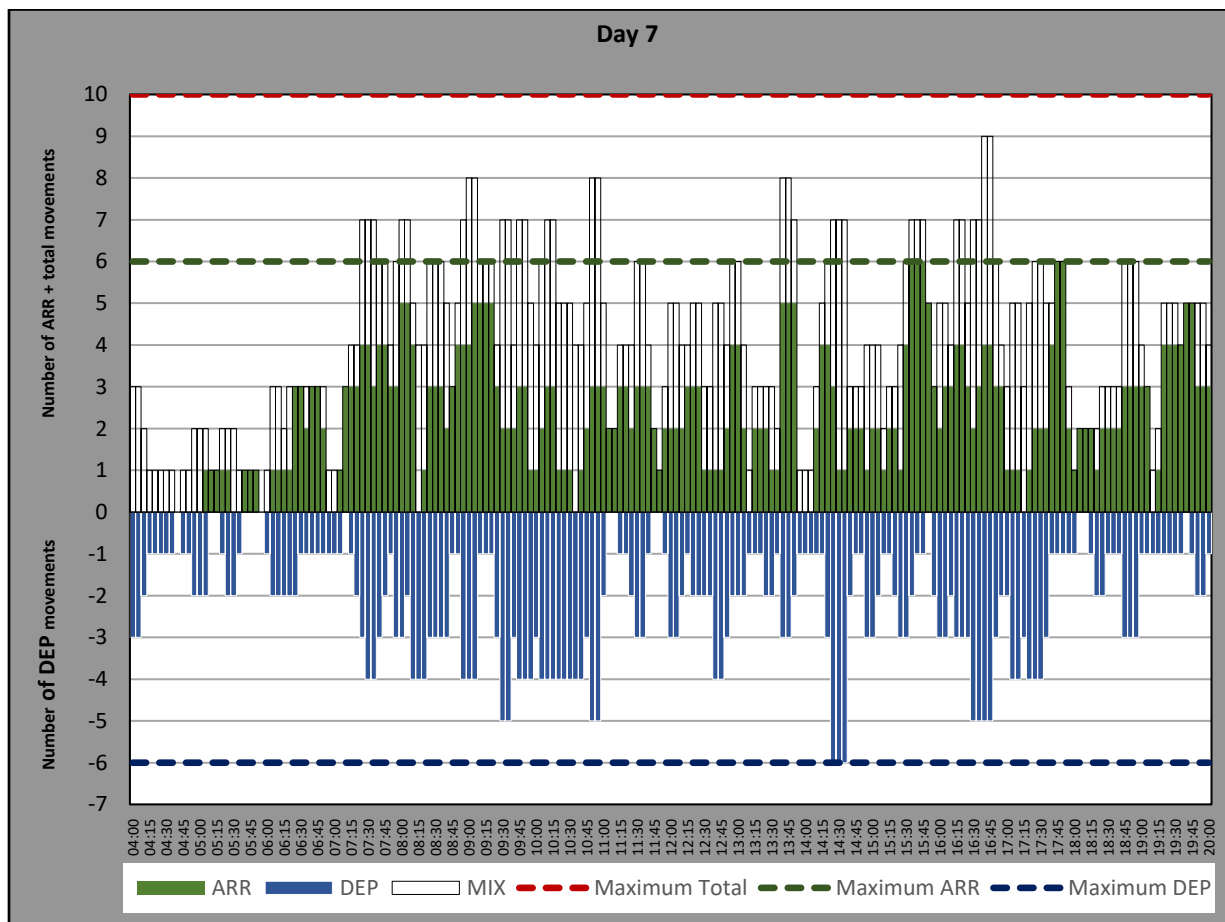
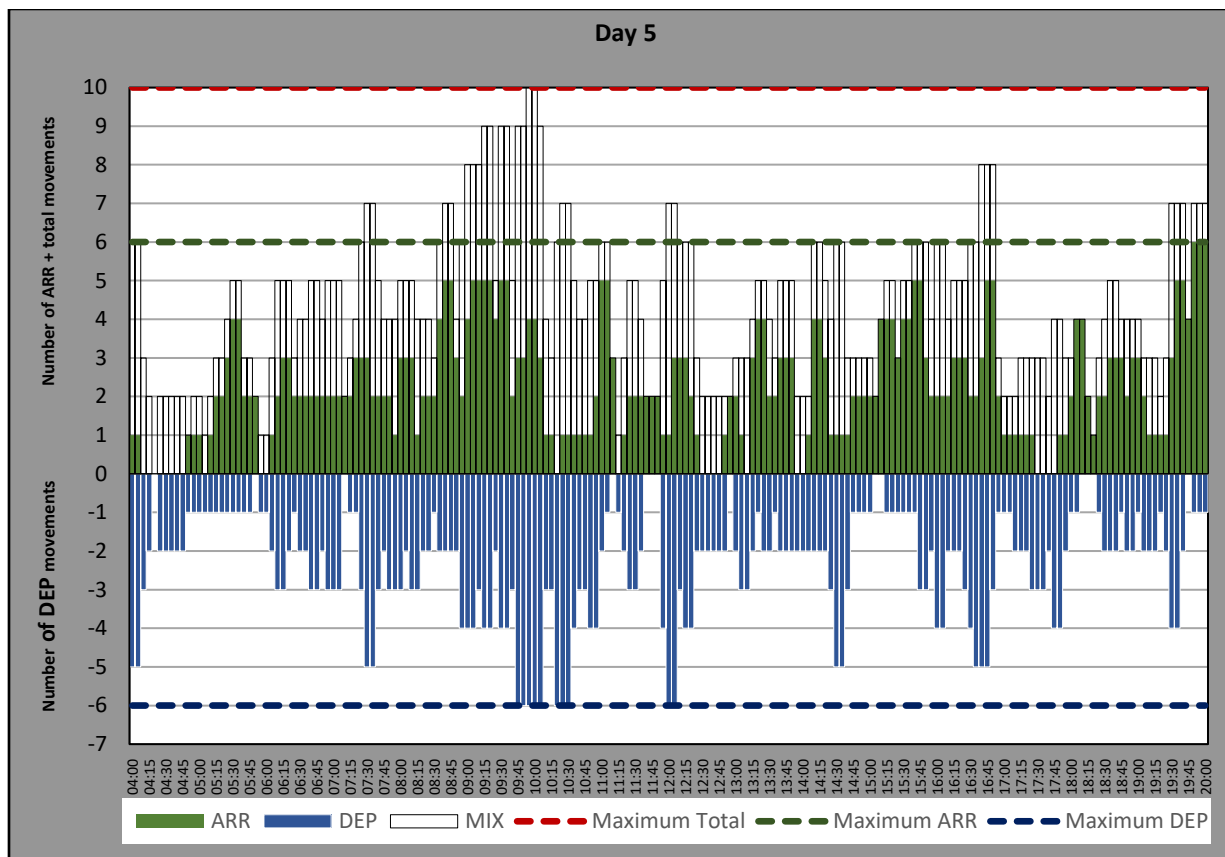
# EOS S23 Typical Week Histogram – Runway Allocation – top days

ARRIVAL + DEPARTURE + TOTAL – 10 minute count rolling every 5 minutes (R10/5)



# EOS S23 Typical Week Histogram – Runway Allocation – top days

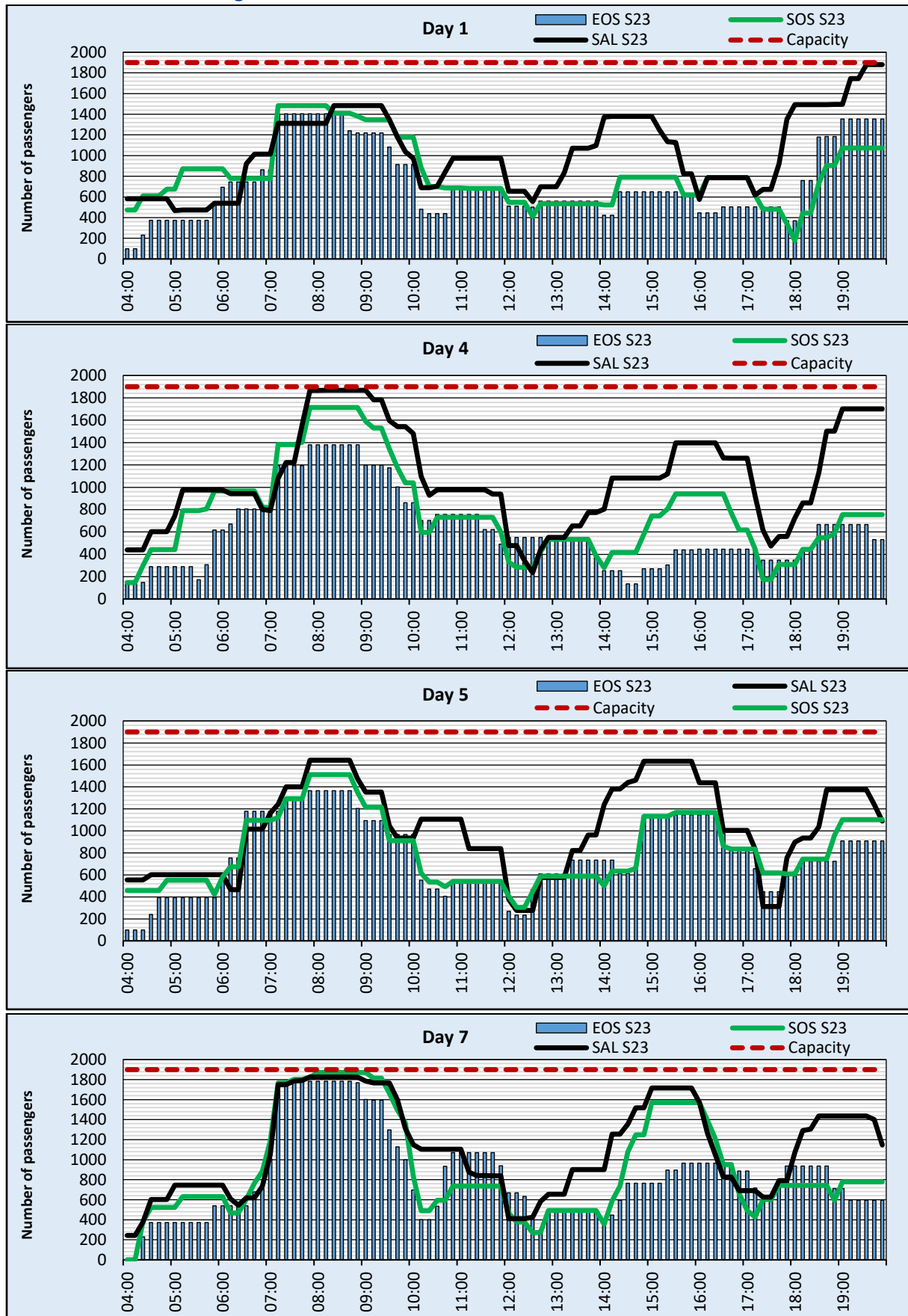
ARRIVAL + DEPARTURE + TOTAL – 10 minute count rolling every 5 minutes (R10/5)



# EOS S23 Typical Week Histogram – Passengers – top days

ARRIVAL – 60 minute count rolling every 10 minutes (T60/10)

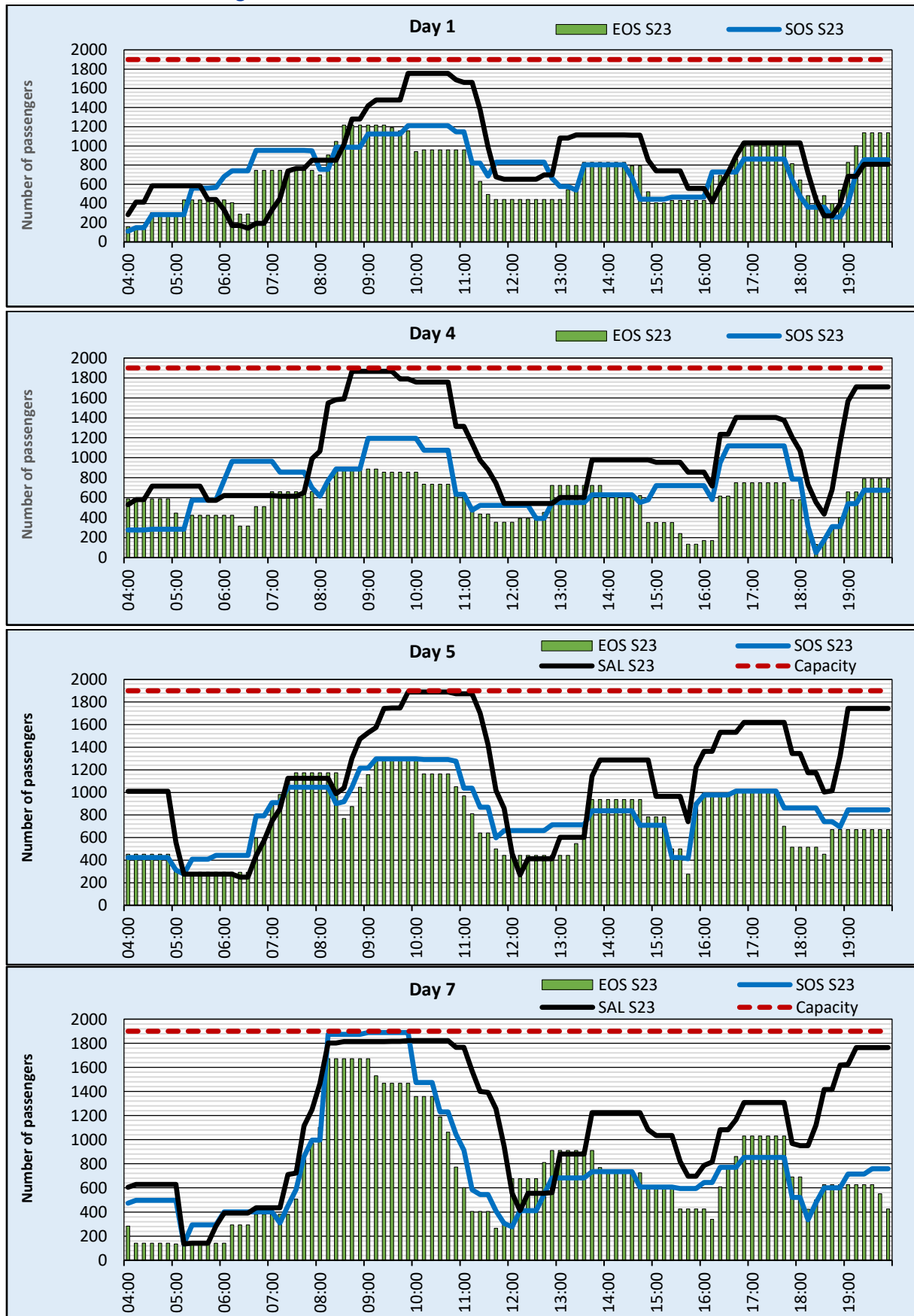
## Terminal T1 – Non-Schengen



# EOS S23 Typical Week Histogram – Passengers - top days

DEPARTURE – 60 minute count rolling every 10 minutes (T60/10)

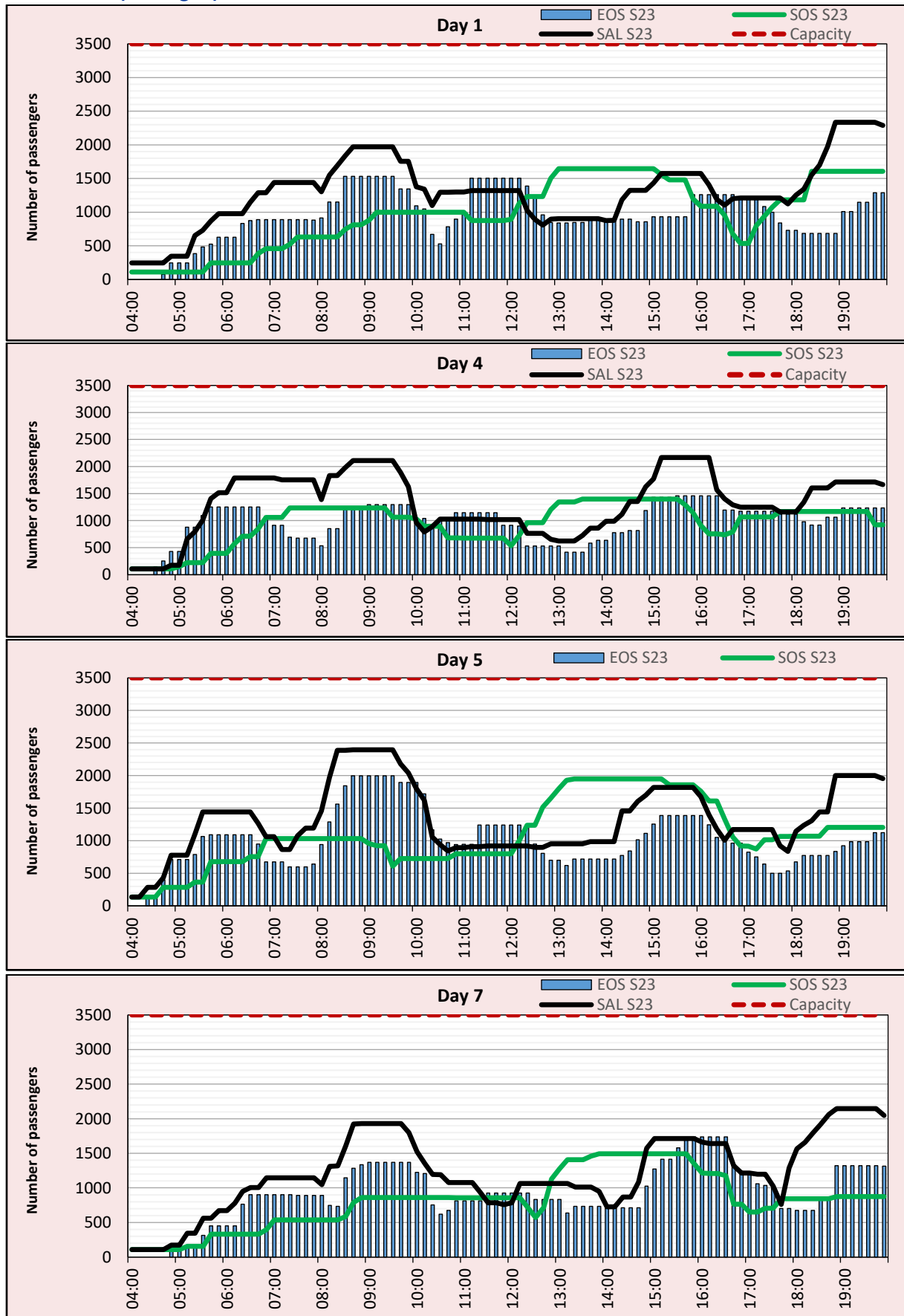
## Terminal T1 – Non-Schengen



# EOS S23 Typical Week Histogram – Passengers – top days

ARRIVAL – 60 minute count rolling every 10 minutes (T60/10)

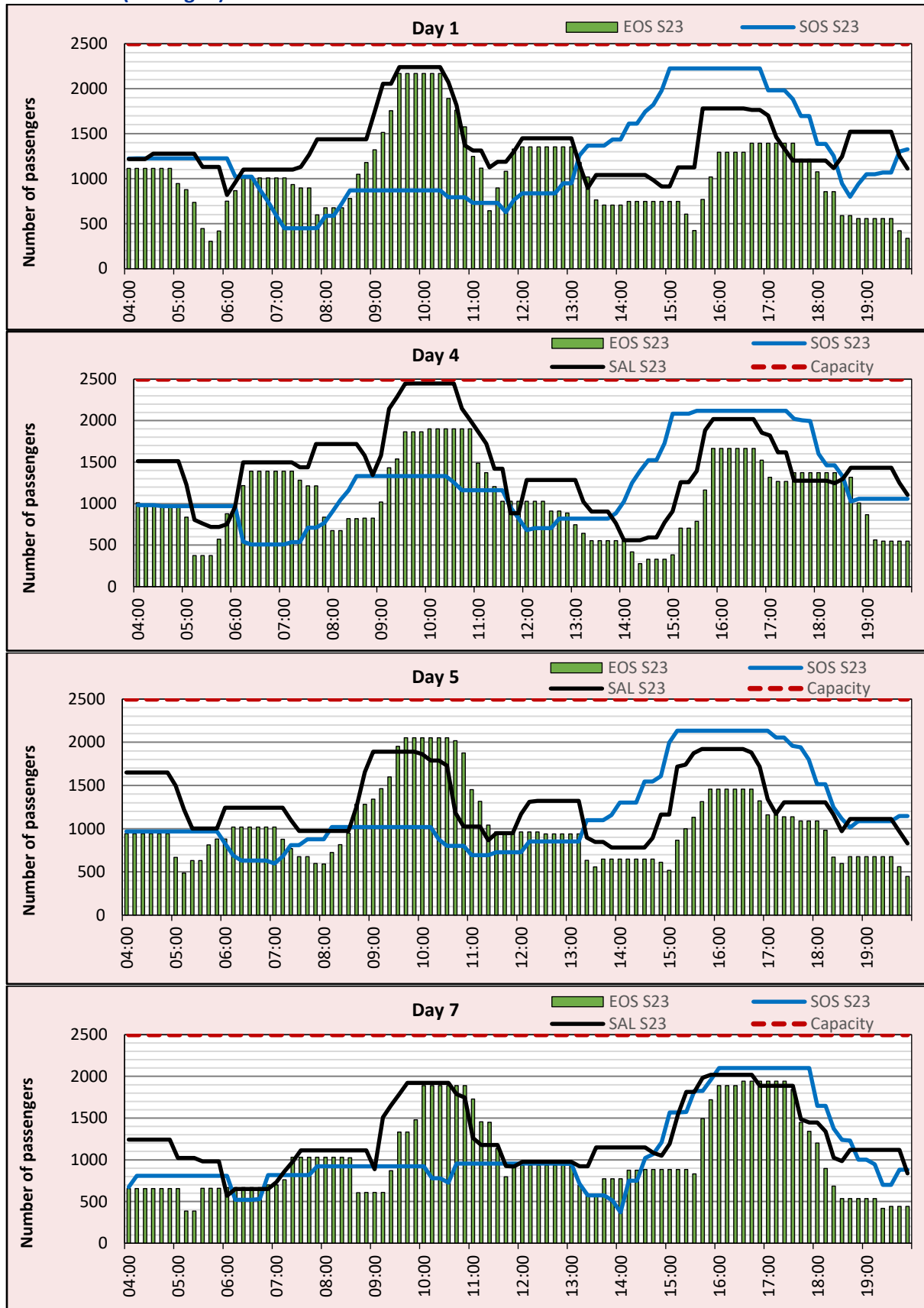
## Terminal T2 (Schengen)



# EOS S23 Typical Week Histogram – Passengers – top days

DEPARTURE – 60 minute count rolling every 10 minutes (T60/10)

## Terminal T2 (Schengen)



## Glossary

---

<b>Air Transport Movement (ATM)</b>	Any aircraft movement which is either a scheduled, chartered passenger or cargo flight (IATA service type codes J, G, C, F, H, A).
<b>Cargo Transport Movements (CATM)</b>	Any aircraft movement which is either a scheduled or chartered or additional cargo flight (IATA service type codes F, H, A)
<b>Demand</b>	Unconstrained demand before any schedule adjustments have been made
<b>GA/BA flights</b>	General aviation and business aviation flights
<b>End of Season (EOS)</b>	Snapshot of schedule shortly after the end of the scheduling season (exact date given where used).
<b>Historical slots (SHL)</b>	Snapshot of historic schedule obtained from the previous equivalent season - as advised to airlines in the SHLs.
<b>IATA Slot Conference (SC)</b>	Snapshot after the end of the IATA Slot Conference
<b>ICAO Size A</b>	Aircraft with wingspan between 0.00m - 14.99m.
<b>ICAO Size B</b>	Aircraft with wingspan between 15.00m - 23.99m.
<b>ICAO Size C</b>	Aircraft with wingspan between 24.00m - 35.99m.
<b>ICAO Size D</b>	Aircraft with wingspan between 36.00m - 51.99m.
<b>ICAO Size E</b>	Aircraft with wingspan between 52.00m - 64.99m.
<b>ICAO Size F</b>	Aircraft with wingspan between 65.00m - 80.00m.
<b>ICAO Size H</b>	Helicopters
<b>Initial Coordination (SAL)</b>	Snapshot of schedule immediately after Initial Coordination is completed - as advised to airlines in the SALs.
<b>Passenger Air Transport Movement (PATM)</b>	Any aircraft movement, which is either a scheduled or chartered passenger flight (service type codes J, G, C).
<b>Other Air Transport Movement (OATM)</b>	Any aircraft movement, which is not either a scheduled, chartered passenger, GA/BA or cargo flight (service type codes E, I, K, L, O, P, T, W, X, Y)
<b>Start of Season (SOS)</b>	Snapshot of schedule shortly before the start of the scheduling season (exact date given below where used).
<b>Time: UTC</b>	Times shown are in Universal Time Constant (UTC).
<b>Total Air Transport Movements (TATM)</b>	Completely all aircraft movements in a given season including flights GA/BA (all IATA service type codes)
<b>Typical week</b>	Typical week for S23 is Mon 07AUG 2023 to Sun 13AUG 2023 Typical week for S22 is Mon 08AUG 2022 to Sun 14AUG 2022
<b><u>Data snapshot descriptions</u></b>	
<b>S22 EOS</b>	S22 schedule as cleared on 04NOV 2022
<b>S23 SAL</b>	S23 schedule as cleared on 05NOV 2022
<b>S23 SOS</b>	S23 schedule as cleared on 01APR 2023
<b>S23 EOS</b>	S23 schedule as cleared on 04NOV 2023

## Slot mobility

No transfers or exchanges under Art. 10.8. within S23 season.

## Monitoring report

<b>Slot misuse</b>	- no records for S23 season.
<b>Late handback</b>	- no records for S23 season.
<b>Sanctions</b>	- no records for S23 season.
<b>Exemptions 14.1</b>	- no records for S23 season.

Minor violation of the slot policy resulted only in warning given to the air carrier.

## Coordination Committee

The Coordination Committee has been established to advise and assist to the coordinator to carry out the following tasks in accordance with the requirements of the Law No. 49/1997 issued by the Ministry of Transport of the Czech Republic.

Its existence covers:

- examine the possibilities to increase the currently determined capacity of the airport,
- determine the ways of achieving a better utilisation of the capacity available,
- monitoring of the usage of the slots allocated.

**The list of members :**

Airline Operators Committee (AOC)  
Air Traffic Control  
Airport Prague  
Smartwings  
Czech Airlines  
Ryanair  
ABS Jets  
Menzies Aviation  
Czech Airlines Handling  
Czech GH  
Civil Aviation Dept. (as observer)  
Civil Aviation Authority (as observer)  
Slot Coordination Czech Republic (as observer)

Main topic for the meeting of the Coordination Committee was the airport capacity presentation for S23 season. Offered capacities were approved by all the members.



## Conclusion

This report provides the requested information and statistics for Vaclav Havel Airport Prague (PRG/LKPR) for season S23. It has been created by Slot Coordination Czech Republic for the next possible usage by DG Move.

Should you require more Information, do not hesitate to contact us at:

**Slot Coordination Czech Republic**

Aviatická 1017/2

Airport Prague

161 00 Prague 6 - Ruzyně

e-mail: [slot.coord@prg.aero](mailto:slot.coord@prg.aero)

WEB: [www.slot-czech.cz](http://www.slot-czech.cz)