



THE ANNUAL REPORT

SEASON

W22

Prague Airport (PRG – LKPR)

Annual Report

Report Date: 27Mar 2023

Summer Season W22

Period: 30th October 2022 – 25th March 2023

Page	Content
	General
2	Table of content, Introduction
3	Headlines
	Analytic section
4	Airport Capacity – Runway
5	Airport Capacity - Terminals and Parking Stands
6	Distributed Historical Slots
7	Slot Allocation (Historical, Modified, New Entrants, New Flights)
8	Allocation and Slot Adjustment
9	ATM Allocation by Operator
10	ATM Allocation and Seats Capacity and Number of Passengers
11	Total ATM Analysis
12	Passenger ATM Seats Capacity Analysis
13	Terminal Analysis
14	Aircraft Size Analysis
15	Seasonality
16	Typical Week Histogram – Runway Allocation R60/10
18	Typical Week Histogram – Runway Movements Allocation R10/5 (EOS)
20	Typical Week Histogram – Passengers - Arrival (T60/10) – Terminal T1 Non-Schengen
22	Typical Week Histogram – Passengers - Departure (T60/10) – Terminal T1 Non-Schengen
24	Typical Week Histogram – Passengers - Arrival (T60/10) – Terminal T2 Schengen
26	Typical Week Histogram – Passengers - Departure (T60/10) – Terminal T2 Schengen
28	Glossary
	Local information and data
29	Slot mobility – transfers/exchanges
	Monitoring report – misuse, late handback, sanctions, exemption 14.1
	Coordination committee
	Report End
30	Conclusion

Introduction

This report contains the general total data for W22 season. Time UTC.

This report refers to Vaclav Havel Airport Prague.

It is Level 3 airport, IATA/ICAO: PRG/LKPR

The coordination software used: **Score, ver. 6.12.7.71**

The online coordination is in use.

The coordination process is conducted in full compliance with EU Reg. 95/93, 793/2004, IATA Worldwide Scheduling Guidelines, IATA Standard Schedules Information Manual and Czech Law, which says that Slot Coordination Czech Republic is delegated to achieve of Coordination function according to decision of the Civil Aviation Authority Czech Republic in accordance with the paragraph No.32, part 1 and 2 of Law No. 49/1997, about Civil Aviation and in accordance with Law No. 455/1991.

Disclaimer

No warranty whether expressed or implied as to the completeness, accuracy, fitness for purpose, or satisfactory quality is given by Slot Coordination Czech Republic regarding the information in this report, which is provided by third parties. Accordingly, Slot Coordination Czech Republic excludes all liability with regard to such data. The contents of this report may not be reproduced without the written consent of Slot Coordination Czech Republic

Headlines

	W22 EOS	W22/W21 EOS	W21 EOS	W22 SOS	W22 SAL	W22 SHL
Total Air Transport Movements (TATM)	33 826	128,8%	26 269	30 754	46 986	31 305
Passenger Air Transport Movements (PATM)	26 437	124,6%	21 222	26 162	45 559	30 072
Cargo Air Transport Movements (CATM)	1 024	66,0%	1 552	1 016	1 386	1 228
Other Air Transport Movements (OATM)	853	141,5%	603	349	41	5
GA/BA Air Transport Movements (GABA)	5 512	93,6%	5 892	227	0	0
Total PATM Seats Capacity	4 493 722	126,4%	3 554 611	5 015 716	7 958 216	
Average Seats per PATM	170,0	101,5%	167,5	172,0	174,7	
Percentage of allocated slots cleared as requested				100,0%	98,3%	
Number of Passengers all Season	3 704 297	157,7%	2 349 216			

Calendar of Coordination Activities W22 Season

SHL Deadline	25APR 2022
Initial Submission Deadline	19MAY 2022
SAL Deadline	09JUN 2022
IATA Slot Conference	12 – 14JUN 2022
Series Return Deadline	15JUL 2022
Historics Baseline Date	31AUG 2022
Start of Season	30OCT 2022
End of Season	25MAR 2023

W22 scheduling season ran from Sunday 30OCT 2022 to Saturday 25OCT 2023 (147 days)

W21 scheduling season ran from Sunday 31OCT 2021 to Saturday 26MAR 2022 (147 days)

Declared Airport Capacity

Runway Capacity

W22				Change: W22 vs. W21			W21					
Periods		10mins					10mins		Periods			
Time (UTC)		ARR	DEP	Total				ARR	DEP	Total	Time (UTC)	
0:00	0:55	6	6	10	x	x	x	6	6	10	0:00	0:55
1:00	1:55	6	6	10	x	x	x	6	6	10	1:00	1:55
2:00	2:55	6	6	10	x	x	x	6	6	10	2:00	2:55
3:00	3:55	6	6	10	x	x	x	6	6	10	3:00	3:55
4:00	4:55	6	6	10	x	x	x	6	6	10	4:00	4:55
5:00	20:55	6	6	10	x	x	x	6	6	10	5:00	20:55
21:00	21:55	6	6	10	x	x	x	6	6	10	21:00	21:55
22:00	22:55	6	6	10	x	x	x	6	6	10	22:00	22:55
23:00	23:55	6	6	10	x	x	x	6	6	10	23:00	23:55

60mins							60mins			Periods		
Time (UTC)		ARR	DEP	Total				ARR	DEP	Total	Time (UTC)	
0:00	0:55	33	33	46	x	x	x	33	33	46	0:00	0:55
1:00	1:55	33	33	46	x	x	x	33	33	46	1:00	1:55
2:00	2:55	33	33	46	x	x	x	33	33	46	2:00	2:55
3:00	3:55	33	33	46	x	x	x	33	33	46	3:00	3:55
4:00	4:55	33	33	46	x	x	x	33	33	46	4:00	4:55
5:00	20:55	33	33	46	x	x	x	33	33	46	5:00	20:55
21:00	21:55	33	33	46	x	x	x	33	33	46	21:00	21:55
22:00	22:55	33	33	46	x	x	x	33	33	46	22:00	22:55
23:00	23:55	33	33	46	x	x	x	33	33	46	23:00	23:55

480mins					480mins		Periods			
Time (UTC)		Total						Time (UTC)		
21:00	21:55	48**)			x			21:00		21:55
22:00	22:55							22:00		22:55
23:00	23:55							23:00		23:55
0:00	0:55							0:00		0:55
1:00	1:55							1:00		1:55
2:00	2:55							2:00		2:55
3:00	3:55							3:00		3:55
4:00	4:55	4:00		4:55						

***) Take-offs and landings are only permitted for aircraft with an MTOW of less than 45t or the aircraft types with an MTOW 45t and higher listed in the "List of Aircrafts Permitted for Night Operation"

Each particular aircraft is obliged to comply with standards for being listed in one of noise categories from 1 to 9!

List of Aircrafts Permitted for Night Operation (according to the IATA code)

141, 142, 143, 146, 14F, 14X, 14Y, 14Z,

221, 223, 290, 295, 318, 319, 31N, 320, 32N, 32Q, 321, 32A, 32B, 32C, 32D, 332, 333, 338, 339, 342, 343, 345, 346, 351, 359, 380, 388

717, 734, 735, 736, 738, 739, 73C, 73E, 73G, 73H, 73J, 73W, 7M1, 7M7, 7M8, 7M9, 7S8, 74H, 74N, 752, 753, 75M, 75T, 75W, 762, 763, 764, 76W, 772, 773, 77L, 77W, 781, 788, 789,

AB6, AR1, AR7, AR8, CCX, E90, E95, GJ6, SU7, SU9

Declared Airport Capacity

Terminal Capacity

W22			Change: W22 vs. W21		W21			
Period		60mins		60mins	Period			
Terminal	Constraint				Constraint	Terminal		
Terminal T1 <i>Non-Schengen</i>	Gates	22	x	22	Gates	Terminal T1 <i>Non-Schengen</i>		
	PAX flow	ARR	1900	x	1900		ARR	PAX flow
		DEP	1900	x	1900		DEP	
		Total	3800	x	3800		Total	
Terminal T2 <i>Schengen</i>	Gates	28	x	28	Gates	Terminal T2 <i>Schengen</i>		
	PAX flow	ARR	2750	x	2750		ARR	PAX flow
		DEP	2500	x	2500		DEP	
		Total	5250	x	5250		Total	
Terminal T3 <i>GA/BA Special</i>	Gates	2	+1	1	Gates	Terminal T3 <i>GA/BA Special</i>		
	PAX flow	ARR	120	+110	10		ARR	PAX flow
		DEP	70	+60	10		DEP	
		Total	190	+170	20		Total	

Parking Stands

W22		Change: W22 vs. W21		W21	
Period	60mins		60mins	Period	
Wing span	Number of stands		Number of stands	Wing span	
total	44	x	44	total	
up to 80m	1	x	1	up to 80m	
from up to 65m	5	x	5	from up to 65m	
from up to 52m	1	x	1	from up to 52m	
from up to 38m	1	x	1	from up to 38m	
up to 36m	29	x	29	up to 36m	
up to 34,5m	2	x	2	up to 34,5m	
up to 29 m	5	x	5	up to 29 m	

SHL W22 - ATM Allocation by Operator

Comparison between W22 SHL vs. W21 SHL

Operator	IATA	ICAO	W22 ATMs	W21 ATMs	+/- change	W22 Rank
Aegean Airlines	A3	AEE	146	294	-148	41
Aer Lingus	EI	EIN	126	202	-76	43
Aeroflot	SU	AFL	1 764	1 764	0	4
Air Arabia	G9	ABY	0	210	-210	58
Air Arabia Maroc	3O	MAC	0	0	0	58
Air Baltic	BT	BTI	84	210	-126	45
Air Cairo	SM	MSC	42	84	-42	53
Air France	AF	AFR	866	1 176	-310	11
Air Malta	KM	AMC	0	72	-72	58
Air Serbia	JU	ASL	84	420	-336	45
Alitalia	AZ	AZA	0	294	-294	58
Arkia	IZ	AIZ	0	36	-36	58
ASL Airlines (CARGO)	3V	TAY	378	378	0	21
Austrian Airlines	OS	AUA	479	1 344	-865	15
BA Cityflyer	CJ	CFE	262	294	-32	32
Bamboo Airways	QH	BAV	0	126	-126	58
Bees Airline	7B	UBE	140	0	140	42
Belavia	B2	BRU	0	294	-294	58
Blu Bird Airways	BZ	BBG	28	0	28	56
Blue Air Aviation	OB	BLA	84	0	84	45
British Airways	BA	BAW	1 428	1 428	0	8
Brussels Airlines	SN	BEL	504	1 512	-1 008	14
Bulgaria Air	FB	LZB	46	168	-122	51
Cyprus Airways	CY	CYP	0	0	0	58
Czech Airlines	OK	CSA	1 656	10 170	-8 514	5
EasyJet	EZY	EZY	1 548	3 902	-2 354	6
El Al Israel Airlines	LY	ELY	252	534	-282	33
Emirates	EK	UAE	294	294	0	25
Eurowings AG	EW	EWG	1 522	924	598	7
FedEx (CARGO)	FX	FDX	336	168	168	23
Finnair	AY	FIN	294	588	-294	25
flydubai	FZ	FDB	210	294	-84	35
Georgian Airways	A9	TGZ	84	84	0	45
Hainan Airlines	HU	CHH	0	0	0	58
China Eastern Airlines	MU	CES	210	210	0	35
Iberia	IB	IBE	184	336	-152	39
Israir Airlines	6H	ISR	44	0	44	52
Jet2.com	LS	EXS	278	636	-358	31
KLM	KL	KLM	1 176	1 176	0	9
Korean Air	KE	KAL	168	168	0	40
LOT Polish Airlines	LO	LOT	1 044	1 344	-300	10
Lufthansa	LH	DLH	2 002	2 562	-560	3
Luxair	LG	LGL	0	10	-10	58
Norwegian	DY, D8	NOZ	398	560	-162	19
Pegasus Airlines	PC	PGT	294	294	0	25
Private Wings	PWF	PWF	33	0	33	54
Qatar Airways	QR	QTR	294	588	-294	25
Qatar Airways (CARGO)	QR	QTR	60	84	-24	50
Rossiya Airlines	FV	SDM	294	774	-480	25
Ryanair	FR, RK	RZR	4 282	6 258	-1 976	1
S7 Airlines	S7	SBI	0	54	-54	58
SAS	SK	SAS	252	252	0	33
SCAT Airlines	DV	VSV	0	168	-168	58
Sichuan Airlines	3U	CSC	84	84	0	45
SkyUp Airlines	PQ	SQP	420	420	0	17
Smartwings	QS	TVS	2 917	3 009	-92	2
SWISS	LX	SWR	664	1 050	-386	13
TAP Portugal	TP	TAP	336	378	-42	23
TAROM	RO	ROT	126	210	-84	43
Transavia	HV	TRA	198	394	-196	38
Transavia France	TO	TVF	346	0	346	22
Turkish Airlines	TK	THY	294	882	-588	25
Turkish Airlines (CARGO)	TK	THY	14	84	-70	57
Ukraine International	PS	AUI	210	294	-84	35
UPS (CARGO)	5X	UPS	420	420	0	17
Ural Airlines	U6	SVR	714	698	16	12
Volotea	V7	VOE	30	450	-420	55
Vueling	VY	VLG	388	672	-284	20
Wizz Air	W6, W5	WZZ	474	808	-334	16
Tunisair	TU	TAR	0	42	-42	58
TOTAL			31 305	52 633		

EJU, EZS

NSZ

RUK

WUK

SAL W22 - Slot Allocation by Operator

Historical, History Modification, New Flights, New Entrants

Operator	Allocated Slots	Maintain Historics	Modify Historics	New Slots	New Entrant
Aegean Airlines	210	210			
Aer Lingus	270		126		144
Aeroflot	1 764	1 764			
Air Baltic	168	168			
Air Cairo	84		62	22	
Air France	1 470	294	572	604	
Air Serbia	336			336	
ASL Airlines (CARGO)	378		378		
Austrian Airlines	1 091		587	504	
BA Cityflyer	262	262			
Bees Airlines	140	140			
Blue Air	138		126	12	
Blue Bird Airways	80			80	
British Airways	1 428	840	336	252	
Brussels Airlines	756	378	126	252	
Bulgaria Air	168		168		
Cyprus Airways	84		84		
Czech Airlines	3 100	1 596	42	1 462	
EasyJet	2 806	987	1 029	790	
El Al Israel Airlines	462	252		210	
Emirates	294	294			
Eurowings	2 685	396	1 554	735	
FedEx (CARGO)	378		378		
Finnair	588	294	294		
Flynas	126				126
Flyr AS	84				84
flydubai	294		294		
China Eastern Airlines	210	210			
Iberia	336		294	42	
Israir Airlines	76		34	42	
Jet2.com	518	103	207	208	
KLM	1 176	1 176			
Korean Air	168	168			
Loong Airlines	294			294	
LOT Polish Airlines	1 342		1 260	82	
Lufthansa	2 310	441	1 866	3	
Luxair	84			84	
Norwegian	696	192	294	210	
Pegasus Airlines	294		294		
Qatar Airways	294		294		
Qatar Airways (CARGO)	84		42	42	
Rossiya Airlines	294	294			
Ryanair	5 703	642	3 654	1 407	
Salam Air	84			84	
SAS	252	252			
Sichuan Airlines	84	84			
SkyUp Airlines	420	420			
Smartwings	4 815	1 709	1 229	1 877	
SunExpress	42		32		10
SWISS	958	76	588	294	
TAP Portugal	588	147	441		
TAROM	168		168		
Transavia	210	146	64		
Transavia France	346		346		
Turkish Airlines	882		588	294	
Turkish Airlines (CARGO)	126			126	
Ukraine International	210	210			
UPS (CARGO)	420	420			
Ural Airlines	714	714			
Volotea	340		36	168	136
Vueling	714		588	126	
Wizz Air	2 090	326	168	672	924
TOTAL	46 986	15 605	18 643	11 314	1 424

SAL W22 - Slot Allocation and Slot Adjustment Distribution by Operator

Operator	Allocated Slots	0	5	10	15	20	25	30	35	40	45	50	55	60-115	>120	No slot allocated
Aegean Airlines	210	100,0%	0,0%	0,0%	0,0%	0,0%	0,0%	0,0%	0,0%	0,0%	0,0%	0,0%	0,0%	0,0%	0,0%	0,0%
Aer Lingus	270	100,0%	0,0%	0,0%	0,0%	0,0%	0,0%	0,0%	0,0%	0,0%	0,0%	0,0%	0,0%	0,0%	0,0%	0,0%
Aeroflot	1 764	100,0%	0,0%	0,0%	0,0%	0,0%	0,0%	0,0%	0,0%	0,0%	0,0%	0,0%	0,0%	0,0%	0,0%	0,0%
Air Baltic	168	100,0%	0,0%	0,0%	0,0%	0,0%	0,0%	0,0%	0,0%	0,0%	0,0%	0,0%	0,0%	0,0%	0,0%	0,0%
Air Cairo	84	100,0%	0,0%	0,0%	0,0%	0,0%	0,0%	0,0%	0,0%	0,0%	0,0%	0,0%	0,0%	0,0%	0,0%	0,0%
Air France	1 470	100,0%	0,0%	0,0%	0,0%	0,0%	0,0%	0,0%	0,0%	0,0%	0,0%	0,0%	0,0%	0,0%	0,0%	0,0%
Air Serbia	336	100,0%	0,0%	0,0%	0,0%	0,0%	0,0%	0,0%	0,0%	0,0%	0,0%	0,0%	0,0%	0,0%	0,0%	0,0%
ASL Airlines (CARGO)	378	100,0%	0,0%	0,0%	0,0%	0,0%	0,0%	0,0%	0,0%	0,0%	0,0%	0,0%	0,0%	0,0%	0,0%	0,0%
Austrian Airlines	1 091	100,0%	0,0%	0,0%	0,0%	0,0%	0,0%	0,0%	0,0%	0,0%	0,0%	0,0%	0,0%	0,0%	0,0%	0,0%
BA Cityflyer	262	100,0%	0,0%	0,0%	0,0%	0,0%	0,0%	0,0%	0,0%	0,0%	0,0%	0,0%	0,0%	0,0%	0,0%	0,0%
Bees Airlines	140	100,0%	0,0%	0,0%	0,0%	0,0%	0,0%	0,0%	0,0%	0,0%	0,0%	0,0%	0,0%	0,0%	0,0%	0,0%
Blue Air	138	100,0%	0,0%	0,0%	0,0%	0,0%	0,0%	0,0%	0,0%	0,0%	0,0%	0,0%	0,0%	0,0%	0,0%	0,0%
Blue Bird Airways	80	100,0%	0,0%	0,0%	0,0%	0,0%	0,0%	0,0%	0,0%	0,0%	0,0%	0,0%	0,0%	0,0%	0,0%	0,0%
British Airways	1 428	100,0%	0,0%	0,0%	0,0%	0,0%	0,0%	0,0%	0,0%	0,0%	0,0%	0,0%	0,0%	0,0%	0,0%	0,0%
Brussels Airlines	756	50,0%	50,0%	0,0%	0,0%	0,0%	0,0%	0,0%	0,0%	0,0%	0,0%	0,0%	0,0%	0,0%	0,0%	0,0%
Bulgaria Air	168	100,0%	0,0%	0,0%	0,0%	0,0%	0,0%	0,0%	0,0%	0,0%	0,0%	0,0%	0,0%	0,0%	0,0%	0,0%
Cyprus Airways	84	100,0%	0,0%	0,0%	0,0%	0,0%	0,0%	0,0%	0,0%	0,0%	0,0%	0,0%	0,0%	0,0%	0,0%	0,0%
Czech Airlines	3 100	100,0%	0,0%	0,0%	0,0%	0,0%	0,0%	0,0%	0,0%	0,0%	0,0%	0,0%	0,0%	0,0%	0,0%	0,0%
EasyJet	2 806	100,0%	0,0%	0,0%	0,0%	0,0%	0,0%	0,0%	0,0%	0,0%	0,0%	0,0%	0,0%	0,0%	0,0%	0,0%
El Al Israel Airlines	462	100,0%	0,0%	0,0%	0,0%	0,0%	0,0%	0,0%	0,0%	0,0%	0,0%	0,0%	0,0%	0,0%	0,0%	0,0%
Emirates	294	100,0%	0,0%	0,0%	0,0%	0,0%	0,0%	0,0%	0,0%	0,0%	0,0%	0,0%	0,0%	0,0%	0,0%	0,0%
Eurowings	2 685	99,2%	0,8%	0,0%	0,0%	0,0%	0,0%	0,0%	0,0%	0,0%	0,0%	0,0%	0,0%	0,0%	0,0%	0,0%
FedEx (CARGO)	378	100,0%	0,0%	0,0%	0,0%	0,0%	0,0%	0,0%	0,0%	0,0%	0,0%	0,0%	0,0%	0,0%	0,0%	0,0%
Finnair	588	100,0%	0,0%	0,0%	0,0%	0,0%	0,0%	0,0%	0,0%	0,0%	0,0%	0,0%	0,0%	0,0%	0,0%	0,0%
Flynas	126	100,0%	0,0%	0,0%	0,0%	0,0%	0,0%	0,0%	0,0%	0,0%	0,0%	0,0%	0,0%	0,0%	0,0%	0,0%
Flyr AS	84	100,0%	0,0%	0,0%	0,0%	0,0%	0,0%	0,0%	0,0%	0,0%	0,0%	0,0%	0,0%	0,0%	0,0%	0,0%
flydubai	294	100,0%	0,0%	0,0%	0,0%	0,0%	0,0%	0,0%	0,0%	0,0%	0,0%	0,0%	0,0%	0,0%	0,0%	0,0%
China Eastern Airlines	210	100,0%	0,0%	0,0%	0,0%	0,0%	0,0%	0,0%	0,0%	0,0%	0,0%	0,0%	0,0%	0,0%	0,0%	0,0%
Iberia	336	100,0%	0,0%	0,0%	0,0%	0,0%	0,0%	0,0%	0,0%	0,0%	0,0%	0,0%	0,0%	0,0%	0,0%	0,0%
Israir Airlines	76	100,0%	0,0%	0,0%	0,0%	0,0%	0,0%	0,0%	0,0%	0,0%	0,0%	0,0%	0,0%	0,0%	0,0%	0,0%
Jet2.com	518	100,0%	0,0%	0,0%	0,0%	0,0%	0,0%	0,0%	0,0%	0,0%	0,0%	0,0%	0,0%	0,0%	0,0%	0,0%
KLM	1 176	100,0%	0,0%	0,0%	0,0%	0,0%	0,0%	0,0%	0,0%	0,0%	0,0%	0,0%	0,0%	0,0%	0,0%	0,0%
Korean Air	168	100,0%	0,0%	0,0%	0,0%	0,0%	0,0%	0,0%	0,0%	0,0%	0,0%	0,0%	0,0%	0,0%	0,0%	0,0%
Loong Airlines	294	100,0%	0,0%	0,0%	0,0%	0,0%	0,0%	0,0%	0,0%	0,0%	0,0%	0,0%	0,0%	0,0%	0,0%	0,0%
LOT Polish Airlines	1 342	100,0%	0,0%	0,0%	0,0%	0,0%	0,0%	0,0%	0,0%	0,0%	0,0%	0,0%	0,0%	0,0%	0,0%	0,0%
Lufthansa	2 310	100,0%	0,0%	0,0%	0,0%	0,0%	0,0%	0,0%	0,0%	0,0%	0,0%	0,0%	0,0%	0,0%	0,0%	0,0%
Luxair	84	100,0%	0,0%	0,0%	0,0%	0,0%	0,0%	0,0%	0,0%	0,0%	0,0%	0,0%	0,0%	0,0%	0,0%	0,0%
Norwegian	696	100,0%	0,0%	0,0%	0,0%	0,0%	0,0%	0,0%	0,0%	0,0%	0,0%	0,0%	0,0%	0,0%	0,0%	0,0%
Pegasus Airlines	294	100,0%	0,0%	0,0%	0,0%	0,0%	0,0%	0,0%	0,0%	0,0%	0,0%	0,0%	0,0%	0,0%	0,0%	0,0%
Qatar Airways	294	100,0%	0,0%	0,0%	0,0%	0,0%	0,0%	0,0%	0,0%	0,0%	0,0%	0,0%	0,0%	0,0%	0,0%	0,0%
Qatar Airways (CARGO)	84	100,0%	0,0%	0,0%	0,0%	0,0%	0,0%	0,0%	0,0%	0,0%	0,0%	0,0%	0,0%	0,0%	0,0%	0,0%
Rossiya Airlines	294	100,0%	0,0%	0,0%	0,0%	0,0%	0,0%	0,0%	0,0%	0,0%	0,0%	0,0%	0,0%	0,0%	0,0%	0,0%
Ryanair	5 703	99,4%	0,4%	0,0%	0,3%	0,0%	0,0%	0,0%	0,0%	0,0%	0,0%	0,0%	0,0%	0,0%	0,0%	0,0%
Salam Air	84	100,0%	0,0%	0,0%	0,0%	0,0%	0,0%	0,0%	0,0%	0,0%	0,0%	0,0%	0,0%	0,0%	0,0%	0,0%
SAS	252	100,0%	0,0%	0,0%	0,0%	0,0%	0,0%	0,0%	0,0%	0,0%	0,0%	0,0%	0,0%	0,0%	0,0%	0,0%
Sichuan Airlines	84	100,0%	0,0%	0,0%	0,0%	0,0%	0,0%	0,0%	0,0%	0,0%	0,0%	0,0%	0,0%	0,0%	0,0%	0,0%
SkyUp Airlines	420	100,0%	0,0%	0,0%	0,0%	0,0%	0,0%	0,0%	0,0%	0,0%	0,0%	0,0%	0,0%	0,0%	0,0%	0,0%
Smartwings	4 815	93,8%	1,3%	0,4%	0,0%	0,4%	0,0%	0,0%	0,4%	0,4%	0,0%	0,0%	0,0%	1,2%	2,0%	0,0%
SunExpress	42	100,0%	0,0%	0,0%	0,0%	0,0%	0,0%	0,0%	0,0%	0,0%	0,0%	0,0%	0,0%	0,0%	0,0%	0,0%
SWISS	958	100,0%	0,0%	0,0%	0,0%	0,0%	0,0%	0,0%	0,0%	0,0%	0,0%	0,0%	0,0%	0,0%	0,0%	0,0%
TAP Portugal	588	100,0%	0,0%	0,0%	0,0%	0,0%	0,0%	0,0%	0,0%	0,0%	0,0%	0,0%	0,0%	0,0%	0,0%	0,0%
TAROM	168	100,0%	0,0%	0,0%	0,0%	0,0%	0,0%	0,0%	0,0%	0,0%	0,0%	0,0%	0,0%	0,0%	0,0%	0,0%
Transavia	210	100,0%	0,0%	0,0%	0,0%	0,0%	0,0%	0,0%	0,0%	0,0%	0,0%	0,0%	0,0%	0,0%	0,0%	0,0%
Transavia France	346	100,0%	0,0%	0,0%	0,0%	0,0%	0,0%	0,0%	0,0%	0,0%	0,0%	0,0%	0,0%	0,0%	0,0%	0,0%
Turkish Airlines	882	100,0%	0,0%	0,0%	0,0%	0,0%	0,0%	0,0%	0,0%	0,0%	0,0%	0,0%	0,0%	0,0%	0,0%	0,0%
Turkish Airlines (CARGO)	126	100,0%	0,0%	0,0%	0,0%	0,0%	0,0%	0,0%	0,0%	0,0%	0,0%	0,0%	0,0%	0,0%	0,0%	0,0%
Ukraine International	210	100,0%	0,0%	0,0%	0,0%	0,0%	0,0%	0,0%	0,0%	0,0%	0,0%	0,0%	0,0%	0,0%	0,0%	0,0%
UPS (CARGO)	420	100,0%	0,0%	0,0%	0,0%	0,0%	0,0%	0,0%	0,0%	0,0%	0,0%	0,0%	0,0%	0,0%	0,0%	0,0%
Ural Airlines	714	100,0%	0,0%	0,0%	0,0%	0,0%	0,0%	0,0%	0,0%	0,0%	0,0%	0,0%	0,0%	0,0%	0,0%	0,0%
Volotea	340	100,0%	0,0%	0,0%	0,0%	0,0%	0,0%	0,0%	0,0%	0,0%	0,0%	0,0%	0,0%	0,0%	0,0%	0,0%
Vueling	714	100,0%	0,0%	0,0%	0,0%	0,0%	0,0%	0,0%	0,0%	0,0%	0,0%	0,0%	0,0%	0,0%	0,0%	0,0%
Wizz Air	2 090	98,0%	2,0%	0,0%	0,0%	0,0%	0,0%	0,0%	0,0%	0,0%	0,0%	0,0%	0,0%	0,0%	0,0%	0,0%

SOS W22 - ATM Allocation by Operator

Comparison between W22 SOS vs. W21 SOS

Operator	IATA	ICAO	SOS W22 ATMs	SOS W21 ATMs	+/- change	W22 Rank	SOS W22 seats	SOS W21 seats	+/- change	W22 Rank
Aegean Airlines	A3	AEE	228	340	-112	31	39 736	59 384	-19 648	28
Aer Lingus	EI	EIN	184	200	-16	34	32 016	34 800	-2 784	29
Aeroflot	SU	AFL	0	1 404	-1 404	55	0	238 888	-238 888	53
Air Baltic	BT	BTI	154	84	70	35	22 330	12 180	10 150	31
Air Cairo	SM	MSC	64	64	0	47	11 136	11 136	0	44
Air France	AF	AFR	880	852	28	10	142 296	146 480	-4 184	11
Air Moldova	9U	MLD	126	0	126	37	18 156	0	18 156	35
Air Serbia	JU	ASL	210	150	60	32	13 860	9 900	3 960	41
Arkia Israel Airlines	IZ	AIZ	0	145	-145	55	0	17 568	-17 568	53
ASL Airlines (CARGO)	3V	TAY	0	372	-372	55	0	0	0	53
Austrian Airlines	OS	AUA	781	452	329	12	93 720	54 120	39 600	16
Azerbaijan Airlines	J2	AHY	84	0	84	43	10 296			46
BA Cityflyer	CJ	CFE	124	214	-90	40	12 152	20 972	-8 820	42
Bees Airline	7B	UBE	0	94	-94	55	0	17 766	-17 766	53
Belavia	B2	BRU	0	204	-204	55	0	21 828	-21 828	53
Blue Air	BZ	BBG	90	114	-24	42	17 010	21 546	-4 536	37
Blue Bird Airways	OB	BLA	80	126	-46	45	15 120	23 814	-8 694	38
British Airways	BA	BAW	1 250	1 260	-10	8	228 120	226 800	1 320	7
Brussels Airlines	SN	BEL	638	1 204	-566	15	95 418	191 682	-96 264	15
Bulgaria Air	FB	LZB	140	114	26	36	19 600	13 656	5 944	34
Cyprus Airways	CY	CYP	60	0	60	49	10 800	0	10 800	45
Czech Airlines	OK	CSA	363	1 511	-1 148	23	65 042	258 814	-193 772	21
EasyJet	EZY	EZY	1 698	1 568	130	4	308 456	287 982	20 474	4
El Al Israel Airlines	LY	ELY	336	398	-62	24	55 776	66 132	-10 356	24
Emirates	EK	UAE	294	294	0	26	104 076	164 628	-60 552	14
Enter Air	ENT	ENT	12	24	-12	53	1 134	2 982	-1 848	51
Eurowings AG	EW	EWG	1 598	1 990	-392	5	284 940	313 140	-28 200	6
FedEx (CARGO)	FX	FDX	378	332	46	21	0	0	0	53
Finnair	AY	FIN	552	528	24	16	75 320	87 506	-12 186	19
flydubai	FZ	FDB	281	276	5	29	45 484	45 816	-332	27
GA/BA Operators			227	161	66	30	863	0	863	52
China Eastern Airlines	MU	CES	77	0	77	46	20 174	0	20 174	32
Iberia	IB	IBE	300	186	114	25	64 320	39 268	25 052	22
Israir Airlines	6H	ISR	82	216	-134	44	15 120	38 685	-23 565	38
Jet2.com	LS	EXS	478	394	84	18	87 718	74 466	13 252	18
KLM	KL	KLM	952	1 176	-224	9	146 772	154 372	-7 600	9
Korean Air	KE	KAL	4	4	0	54	1 164	1 088	76	50
LOT Polish Airlines	LO	LOT	1 544	983	561	6	153 786	77 750	76 036	8
Lufthansa	LH	DLH	2 102	1 788	314	3	326 160	259 291	66 869	3
Luxair	LG	LGL	84	0	84	43	6 384	0	6 384	48
Neos	NO	NOS	58	0	58	50	11 488	0	11 488	43
Norwegian	DY, D8	NOZ	378	472	-94	21	70 284	87 792	-17 508	20
Other Flights			14	3	11	52	0	0	0	53
Other PAX Charters			114	140	-26	41	12 656	37 581	-24 925	33
Pegasus Airlines	PC	PGT	294	270	24	26	54 916	51 030	3 886	25
Qatar Airways	QR	QTR	402	508	-106	20	57 072	112 344	-55 272	23
Qatar Airways (CARGO)	QR	QTR	84	124	-40	43	0	0	0	53
Rossiya Airlines	FV	SDM	0	234	-234	55	0	41 218	-41 218	53
Ryanair	FR, RK	RZR	4 066	4 417	-351	1	771 034	838 747	-67 713	1
SalamAir	OV	OMS	84	0	84	43	17 808	0	17 808	36
SAS	SK	SAS	64	172	-108	47	7 380	28 798	-21 418	47
SkyUp Airlines	PQ	SQP	0	174	-174	55	0	27 846	-27 846	53
Smartwings	QS	TVS	3 380	3 280	100	2	591 833	622 284	-30 451	2
SWISS	LX	SWR	854	735	119	11	112 002	99 385	12 617	13
TAP Portugal	TP	TAP	294	336	-42	26	51 324	57 516	-6 192	26
TAROM	RO	ROT	126	124	2	37	14 646	14 384	262	40
Transavia	HV	TRA	487	537	-50	17	91 476	100 548	-9 072	17
Turkish Airlines	TK	THY	758	758	0	13	144 974	141 794	3 180	10
Turkish Airlines (CARGO)	TK	THY	126	126	0	37	0	0	0	53
Ukraine International	PS	AUI	0	246	-246	55	0	31 320	-31 320	53
UPS (CARGO)	5X	UPS	408	414	-6	19	0	0	0	53
Ural Airlines	U6	SVR	0	64	-64	55	0	10 240	-10 240	53
Uzbekistan Airways	HY	UZB	42	0	42	51	6 300	0	6 300	49
Volotea	V7	VOE	198	538	-340	33	30 720	85 164	-54 444	30
Vueling	VY	VLG	672	540	132	14	125 280	95 824	29 456	12
Wizz Air	W6, W9	WZZ	1 396	1 090	306	7	297 580	210 500	87 080	5
TOTAL			30 754	34 524			5 013 228	5 104 299		

EJU, EZS

NSZ

RUK

WUK

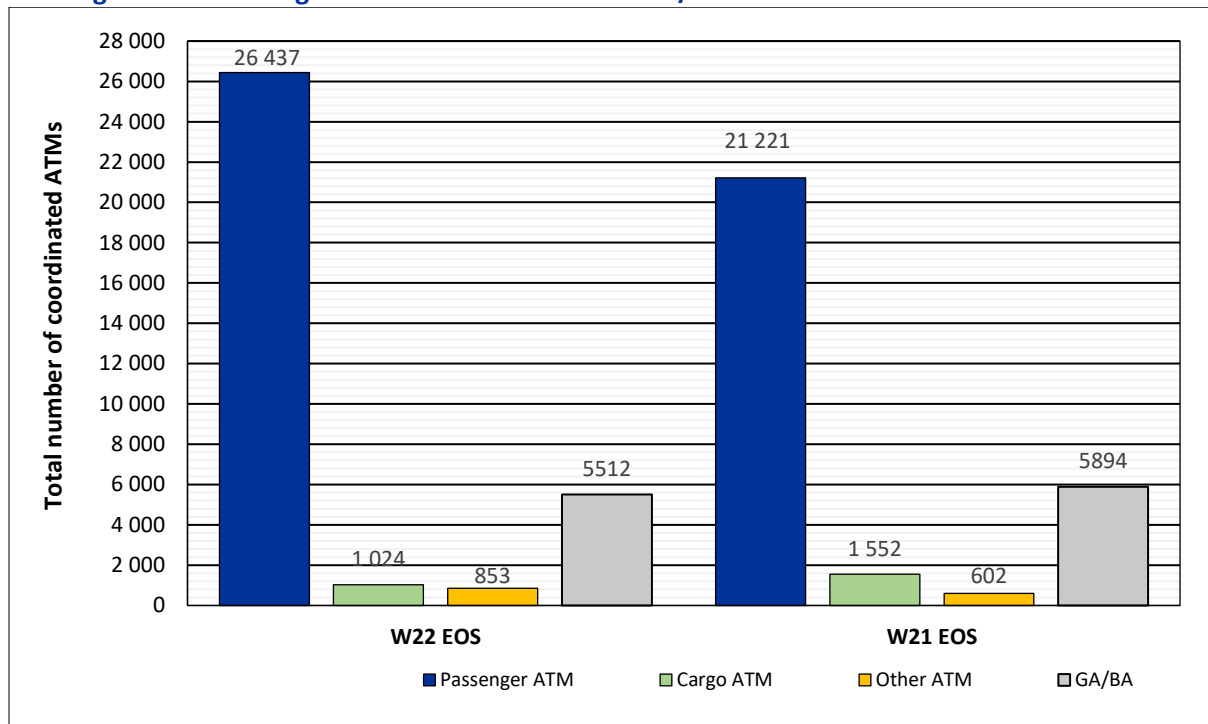
EOS W22 - ATM Allocation and Seats Capacity and Pax numbers by Operators

Comparison W22 EOS vs. W21 EOS – ATM + Seats Capacity + PAX numbers

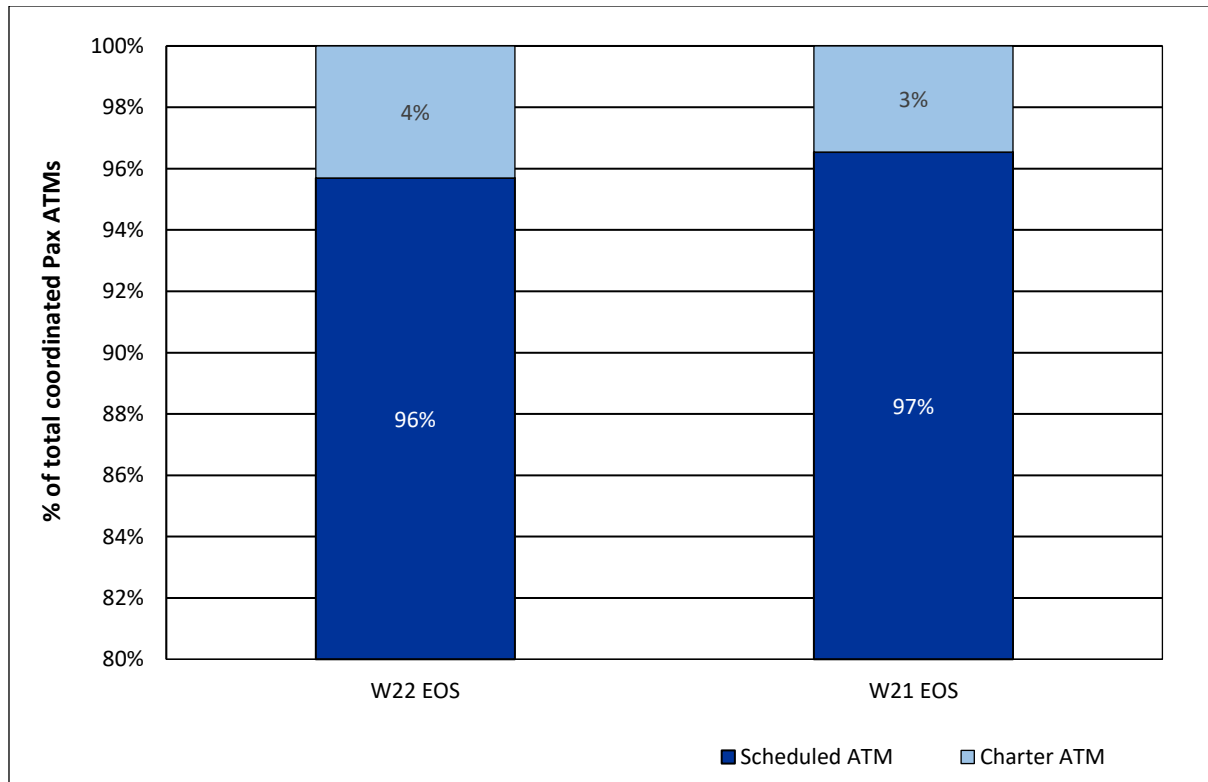
Operator	IATA	ICAO	EOS W22 ATMs	EOS W21 ATMs	+/- change ATMs	W22 Rank	EOS W22 seats capacity	EOS W21 seats capacity	+/- seats capacity change	EOS W22 PAX numbers	EOS W21 PAX numbers	+/- PAX numbers change	W22 Rank
Aegean Airlines	A3	AEE	250	140	110	31	43 640	24 464	19 176	36 834	14 515	22 319	24
Aer Lingus	EI	EIN	182	94	88	36	31 668	16 356	15 312	24 670	7 873	16 797	30
Aeroflot	SU	AFL	0	238	-238	59	0	42 126	-42 126	0	24 301	-24 301	54
Air Baltic	BT	BTI	154	82	72	37	22 330	11 890	10 440	17 029	5 499	11 530	32
Air Cairo	SM	MSC	64	50	14	50	11 008	8 700	2 308	8 943	6 391	2 552	42
Air France	AF	AFR	878	746	132	11	142 672	123 645	19 027	123 644	93 834	29 810	7
Air Malta	KM	AMC	0	4	-4	59	0	720	-720	0	302	-302	54
Air Moldova	9U	MLD	112	0	112	41	16 628	0	16 628	5 430	0	5 430	46
Air Serbia	JU	ASL	252	86	166	30	17 140	5 832	11 308	13 597	3 052	10 545	34
Arkia Israel Airlines	IZ	AIZ	0	42	-42	59	0	5 526	-5 526	0	3 840	-3 840	54
ASL Airlines (CARGO)	3V	TAY	0	359	-359	59	0	0	0	0	0	0	54
Austrian Airlines	OS	AUA	774	423	351	13	92 220	51 192	41 028	56 404	20 640	35 764	17
Azerbaijan Airlines	J2	AHY	46	0	46	53	6 076	0	6 076	3 908	0	3 908	48
BA Cityflyer	CJ	CFE	119	34	85	40	11 564	3 332	8 232	9 282	2 023	7 259	40
Bees Airline	7B	UBE	0	98	-98	59	0	18 522	-18 522	0	8 712	-8 712	54
Belavia	B2	BRU	0	0	0	59	0	0	0	0	0	0	54
Blue Air	0B	BLA	0	58	-58	59	0	10 962	-10 962	0	5 212	-5 212	54
Blue Bird Airways	BZ	BBG	72	64	8	47	13 508	12 096	1 412	10 534	8 079	2 455	37
British Airways	BA	BAW	1 021	521	500	9	186 720	93 780	92 940	148 251	58 215	90 036	6
Brussels Airlines	SN	BEL	633	334	299	16	94 377	50 760	43 617	77 685	28 969	48 716	16
Bulgaria Air	FB	LZB	108	92	16	43	15 120	11 356	3 764	10 084	7 352	2 732	38
Czech Airlines	OK	CSA	215	592	-377	33	36 051	94 959	-58 908	22 110	54 076	-31 966	31
EasyJet	EZY	EZY	1 658	1 173	485	5	295 824	205 766	90 058	259 188	132 172	127 016	3
El Al Israel Airlines	LY	ELY	340	176	164	23	57 620	29 758	27 862	49 458	21 459	27 999	20
Emirates	EK	UAE	294	294	0	25	104 224	104 532	-308	89 133	65 635	23 498	13
Enter Air	ENT	ENT	20	14	6	56	1 890	2 604	-714	1 478	1 904	-426	50
Eurowings AG	EW	EWG	1 157	1 327	-170	8	202 350	210 210	-7 860	120 614	104 543	16 071	8
FedEx (CARGO)	FX	FDX	370	324	46	20	0	0	0	0	0	0	54
Finnair	AY	FIN	503	264	239	17	63 644	30 740	32 904	44 367	19 945	24 422	22
flydubai	FZ	FDB	214	209	5	34	34 860	34 694	166	27 242	24 077	3 165	29
GA/BA Operators			5 512	5 894	-382	1	13 742	10 002	3 740	8 979	7 940	1 039	41
Hainan Airlines (CARGO)	HU	CHH	0	46	-46	59	0	0	0	0	0	0	54
China Eastern Airlines (CARGO)	MU	CES	0	44	-44	59	0	0	0	0	0	0	54
Iberia	IB	IBE	300	204	96	24	61 369	37 760	23 609	47 610	25 549	22 061	21
Israir Airlines	6H	ISR	72	112	-40	48	12 798	20 358	-7 560	8 441	13 123	-4 682	44
Jet2.com	LS	EXS	480	296	184	18	87 892	55 944	31 948	78 232	33 183	45 049	15
KLM	KL	KLM	880	1 019	-139	10	134 280	132 692	1 588	108 567	88 810	19 757	12
Korean Air	KE	KAL	4	6	-2	58	1 164	1 626	-462	818	517	301	52
LOT Polish Airlines	LO	LOT	1 498	949	549	6	150 536	92 830	57 706	114 520	59 423	55 097	9
Lufthansa	LH	DLH	1 912	1 558	354	4	281 678	214 068	67 610	229 534	138 507	91 027	5
Luxair	LG	LGL	82	0	82	46	6 280	0	6 280	4 163	0	4 163	47
NEOS	NO	NOS	64	0	64	49	11 473	0	11 473	9 667	0	9 667	39
Norwegian	DY, D8	NOZ	342	265	77	22	63 588	49 290	14 298	50 027	12 823	37 204	19
Other Cargo Operators			34	66	-32	54	0	0	0	0	0	0	54
Other Flights			367	602	-235	21	2 436	2 072	364	14 178	613	13 565	33
Other PAX Charters			20	102	-82	55	9 303	7 184	2 119	1 915	17 609	-15 694	49
Pegasus Airlines	PC	PGT	294	250	44	26	62 906	47 288	15 618	53 819	34 675	19 144	18
Private Wings	PWF	PWF	145	0	145	38	2 613	0	2 613	839	0	839	51
Qatar Airways	QR	QTR	268	236	32	28	35 340	35 888	-548	31 599	23 548	8 051	26
Qatar Airways (CARGO)	QR	QTR	84	164	-80	45	0	0	0	0	0	0	54
Rossiya Airlines	FV	SDM	0	54	-54	59	0	7 296	-7 296	0	4 925	-4 925	54
Ryanair	FR, RK	RZR	4 092	4 091	1	2	770 387	776 491	-6 104	689 306	561 443	127 863	1
SalamAir	OV	OMS	86	0	86	44	17 760	0	17 760	11 430	0	11 430	36
SAS	SK	SAS	62	32	30	52	7 200	5 136	2 064	5 472	2 932	2 540	45
Sichuan Airlines (CARGO)	3U	CSC	0	28	-28	59	0	0	0	0	0	0	54
SkyUp Airlines	PQ	SQP	0	146	-146	59	0	23 754	-23 754	0	14 712	-14 712	54
Smartwings	QS	TVS	2 537	1 998	539	3	424 835	375 197	49 638	349 988	280 572	69 416	2
Sunexpress	xq	SXS	62	0	62	51	11 718	0	11 718	8 696	0	8 696	43
SWISS	LX	SWR	848	606	242	12	115 932	85 974	29 958	86 900	49 695	37 205	14
TAP Portugal	TP	TAP	274	294	-20	27	47 934	49 432	-1 498	36 761	28 297	8 464	25
TAROM	RO	ROT	126	116	10	39	14 958	13 612	1 346	12 083	8 539	3 544	35
Transavia	HV	TRA	220	210	10	32	36 288	40 490	-4 202	30 272	51 703	-21 431	27
Transavia France	TO	TVF	254	200	54	29	47 988	37 000	10 988	42 257	0	42 257	23
Turkish Airlines	TK	THY	746	284	462	14	141 344	51 547	89 797	114 001	38 013	75 988	10
Turkish Airlines (CARGO)	TK	THY	110	117	-7	42	0	0	0	0	0	0	54
Ukraine International	PS	AUI	0	162	-162	59	0	24 680	-24 680	0	18 929	-18 929	54
UPS (CARGO)	UPS	UPS	406	404	2	19	0	0	0	0	0	0	54
Uzbekistan Airways	HY	UZB	6	0	6	57	900	0	900	392	0	392	53
Volotea	V7	VOE	198	192	6	35	30 720	30 036	684	28 540	24 160	4 380	28
Vueling	VY	VLG	644	382	262	15	120 080	70 456	49 624	113 745	45 810	67 935	11
Wizz Air	w6, w9	WZZ	1 361	302	1 059	7	290 191	64 060	226 131	251 662	40 546	211 116	4
TOTAL			33 826	29 269			4 516 767	3 566 685		3 704 298	2 349 216		

EOS W22 Full Season - Total ATM Analysis

Passenger ATMs vs. Cargo ATMs vs. Other ATMs vs. GA/BA

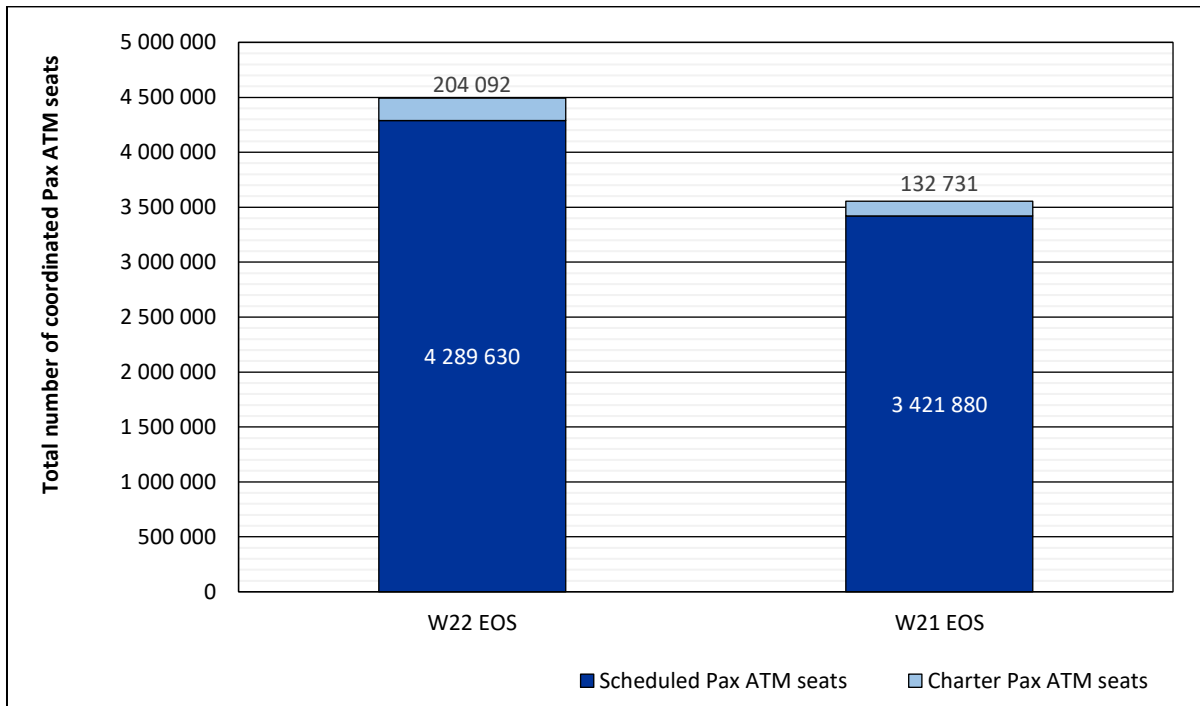


Passenger ATMs: Scheduled vs. Charter

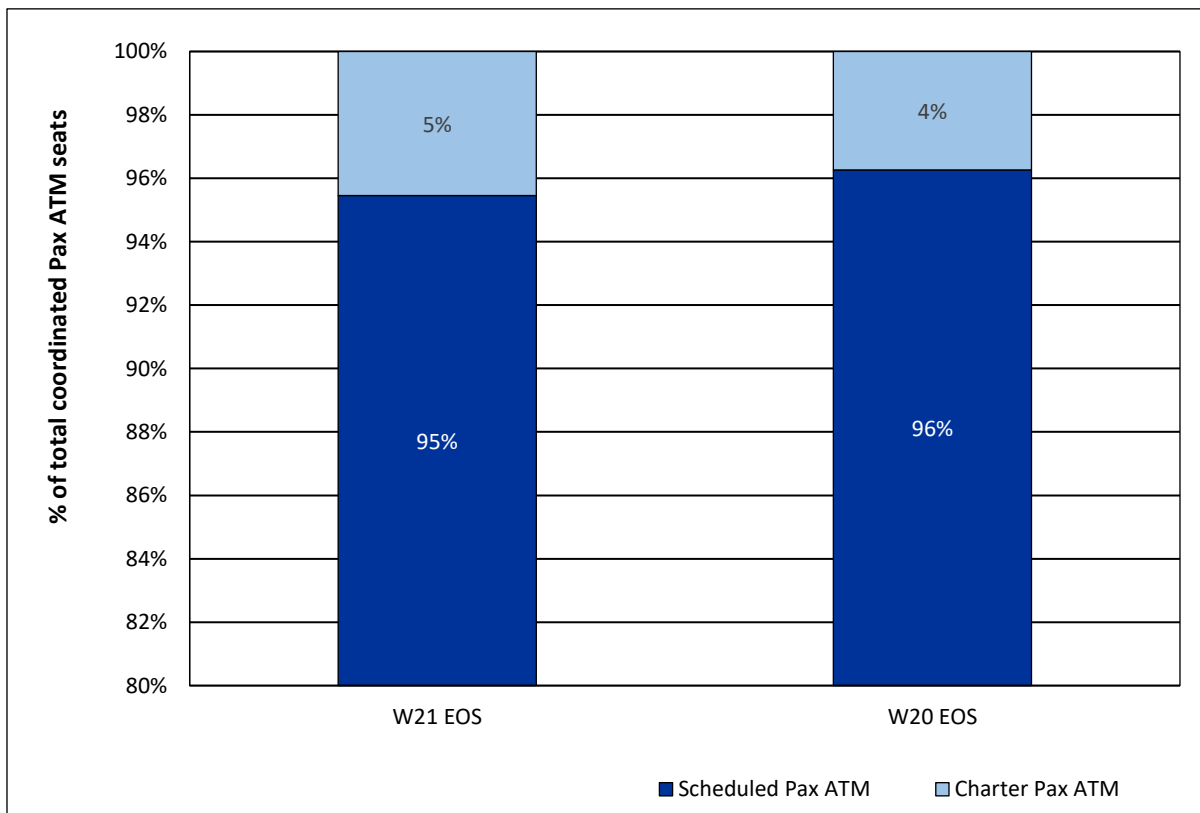


EOS W22 Full Season - Passenger ATM Seats Capacity Analysis

Passenger ATM seats: Scheduled vs. Charter

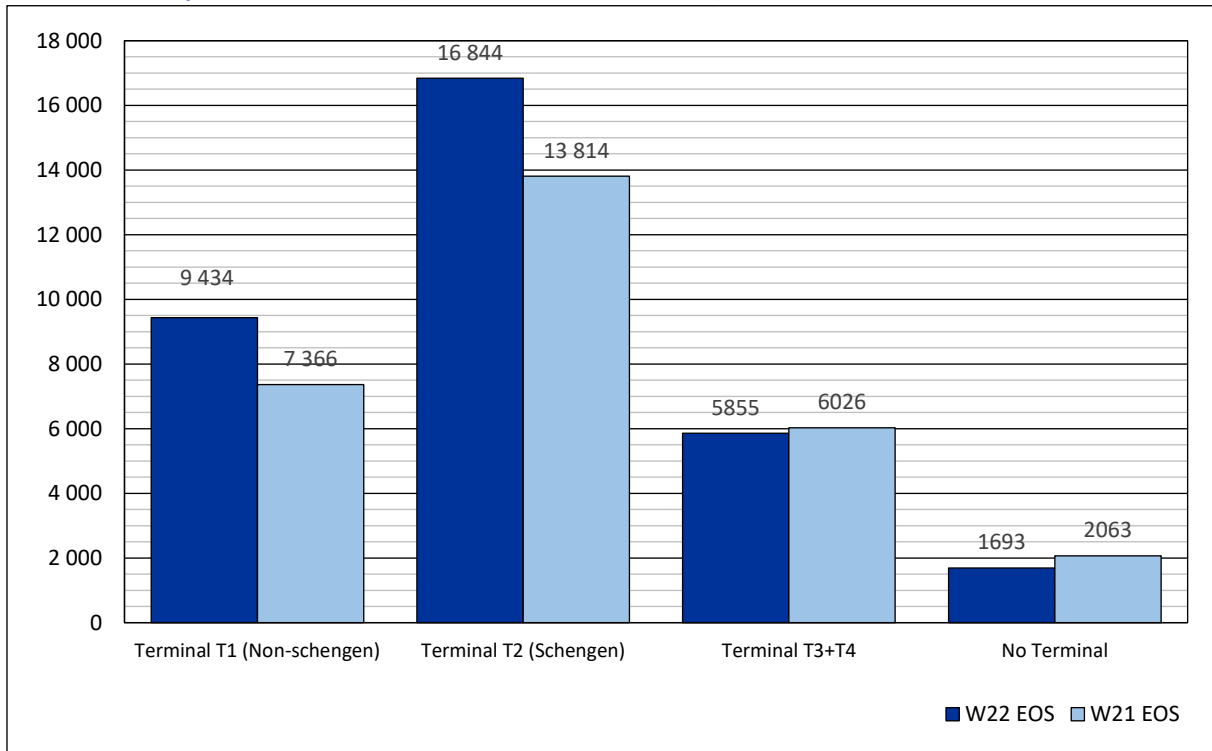


Passenger ATM seats: Schedule vs. Charter



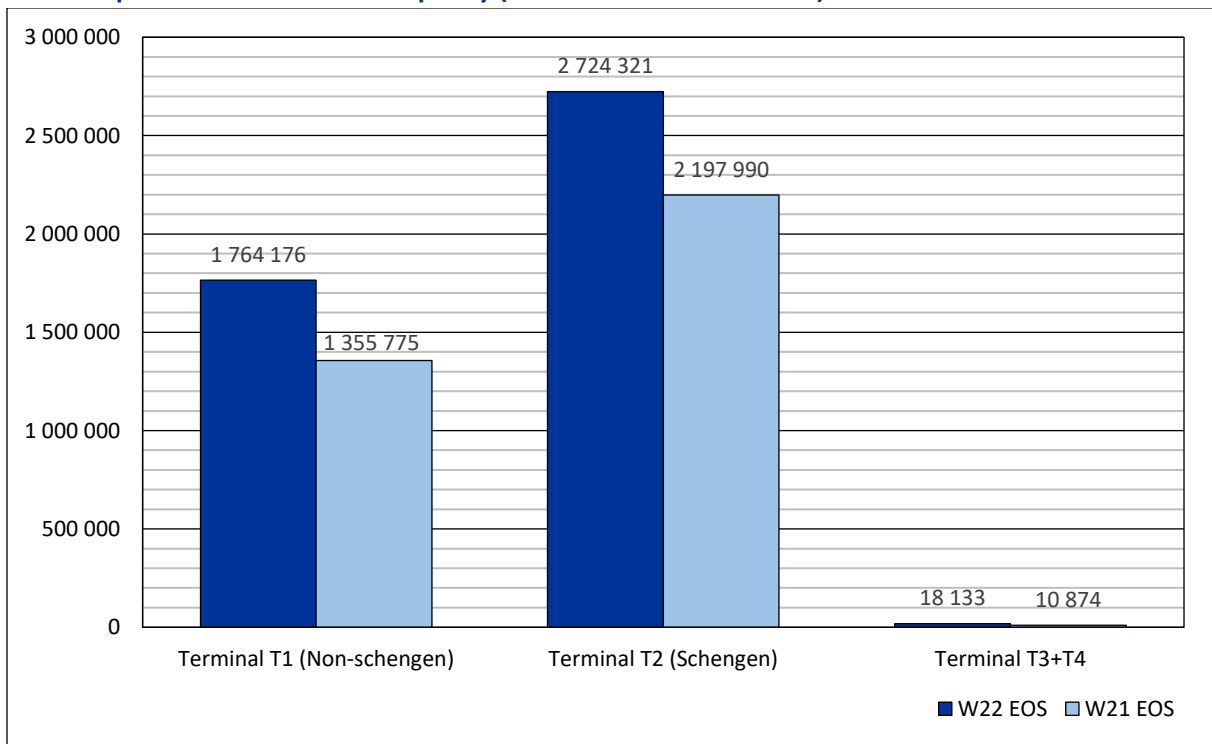
EOS W22 Full Season - Terminal Analysis

Total Air Transport Movements (total allocated for season)



Note: Terminal T3 - special charter flights, special flights and GA/BA flights are included
Terminal T4 – government, state flights

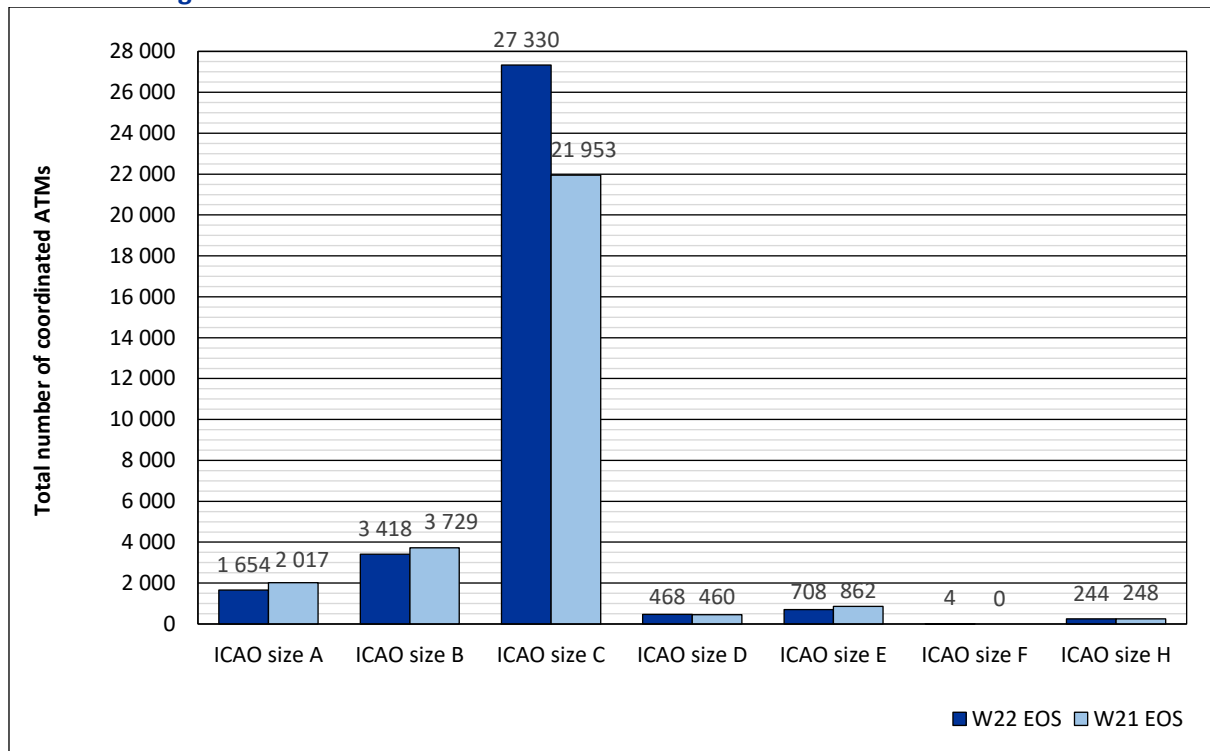
Air Transport Movement Seats Capacity (total allocated for season)



Note: Terminal T3 - special charter flights are included ONLY
Terminal T4 – government, state flights

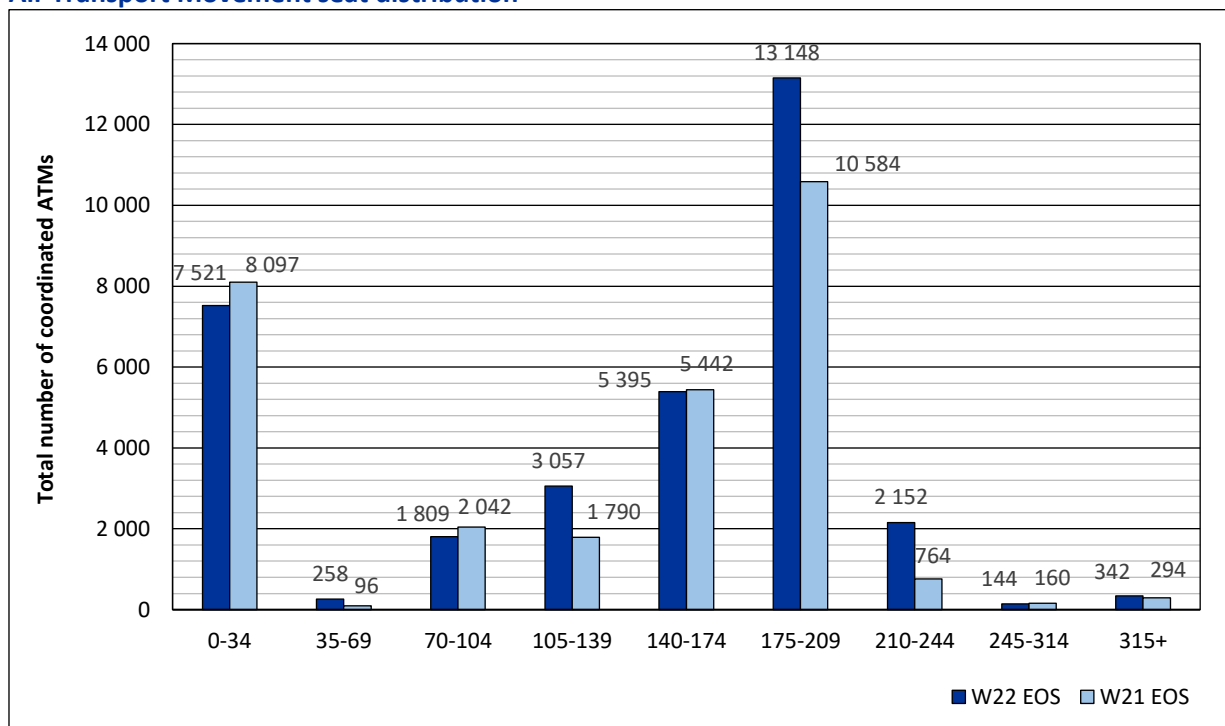
EOS W22 Full Season - Aircraft Size Analysis

ICAO size designation



Note: See Glossary for definitions of ICAO Size groupings

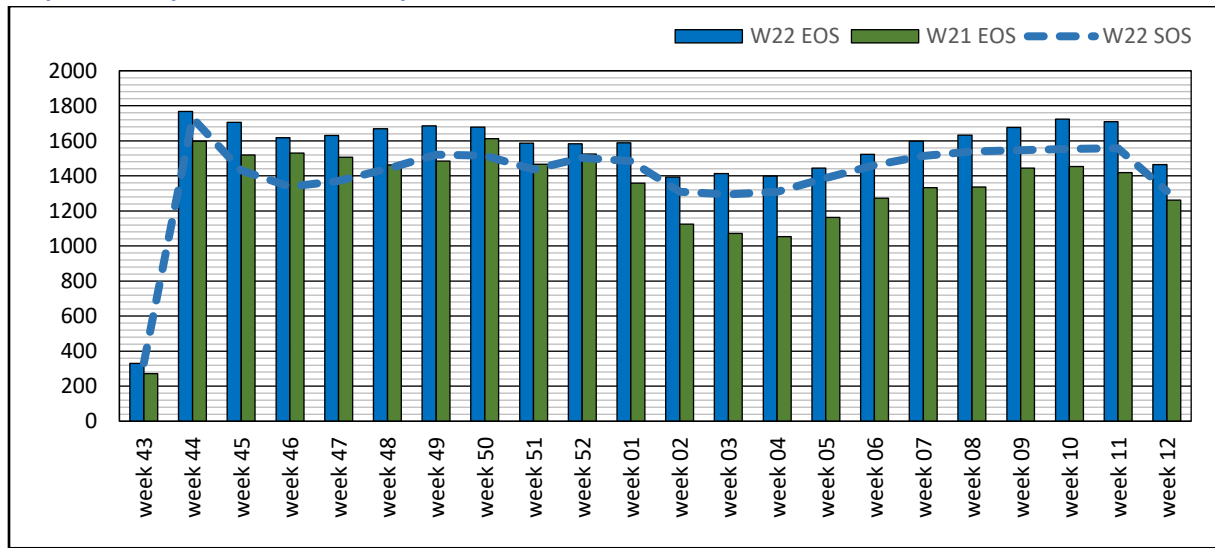
Air Transport Movement seat distribution



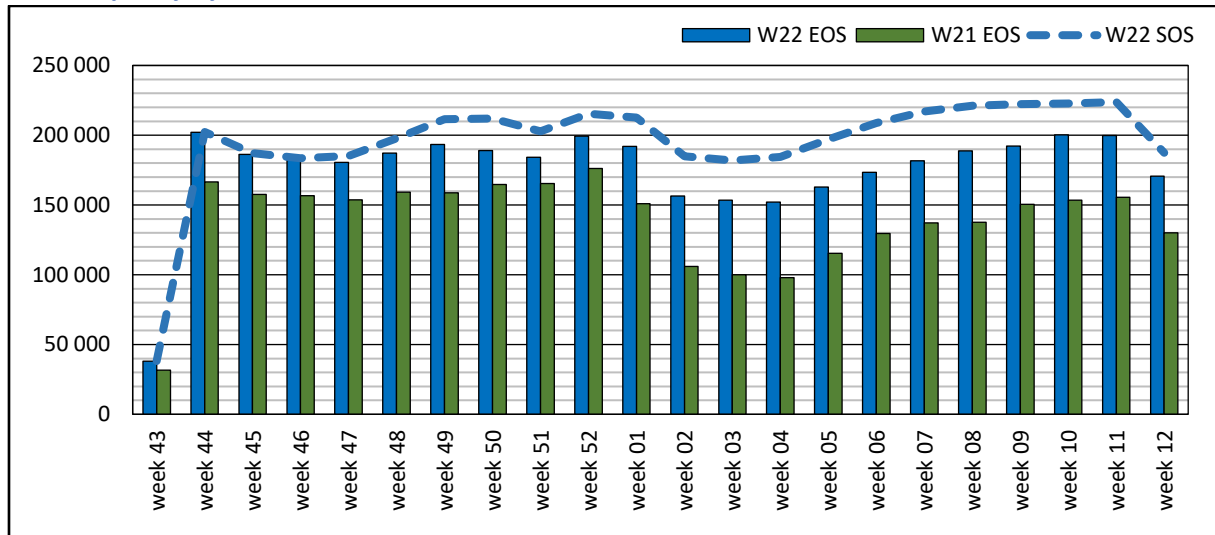
Note: Cargo services with 0 seats are included in the first seat band „0-34“

EOS W22 Full Season - Seasonality

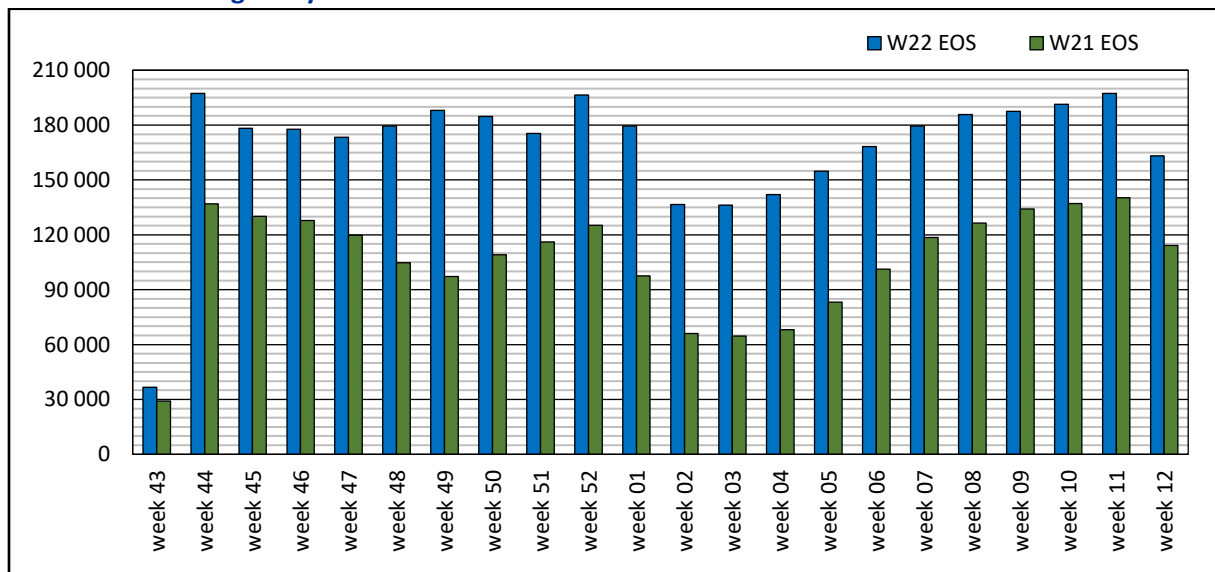
Airport Transport Movements by week of season



Seats Capacity by week of season

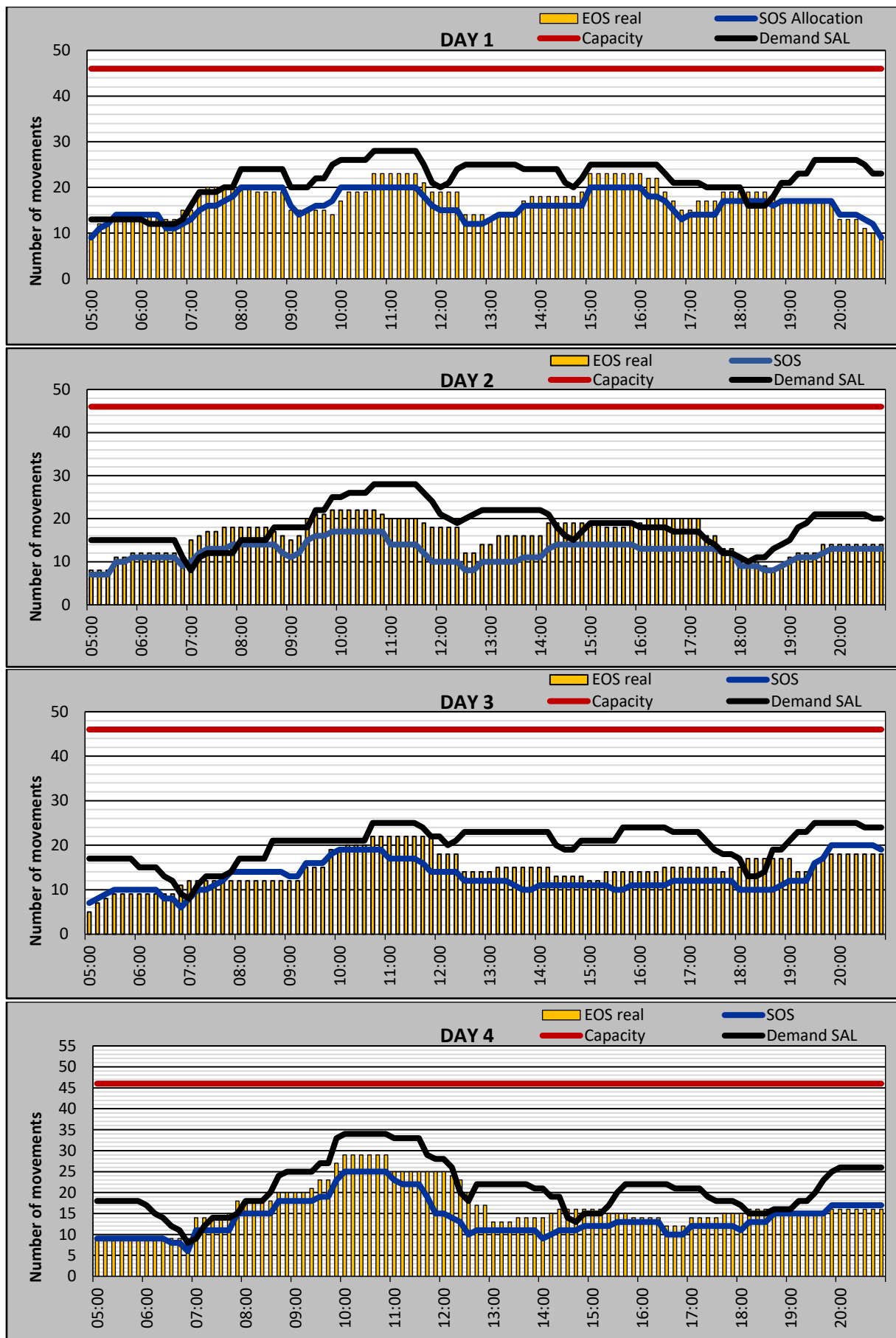


Number of Passengers by week of season



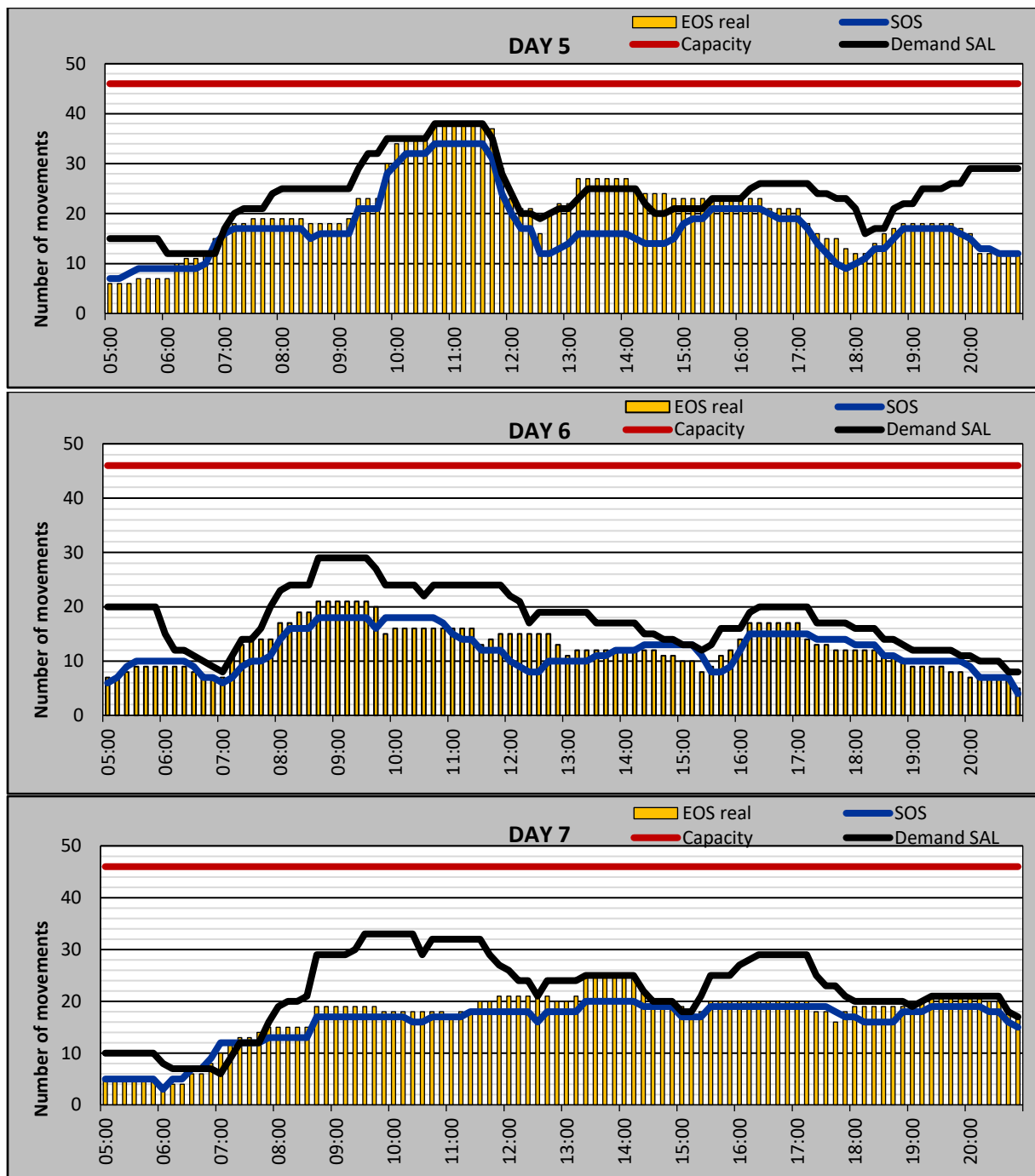
EOS W22 Typical Week Histogram – Runway Allocation

TOTAL Movements – 60 minute count rolling every 10 minutes (R60/10)



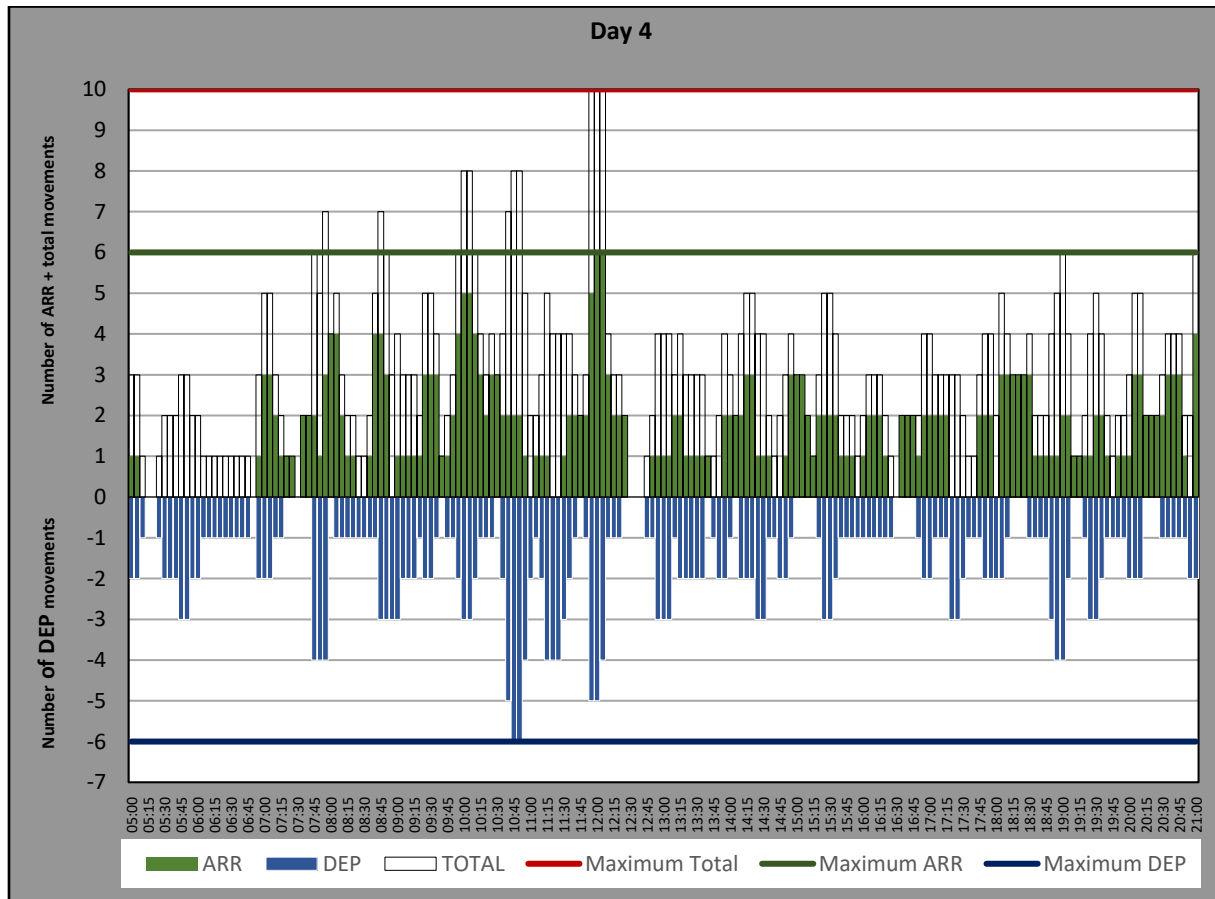
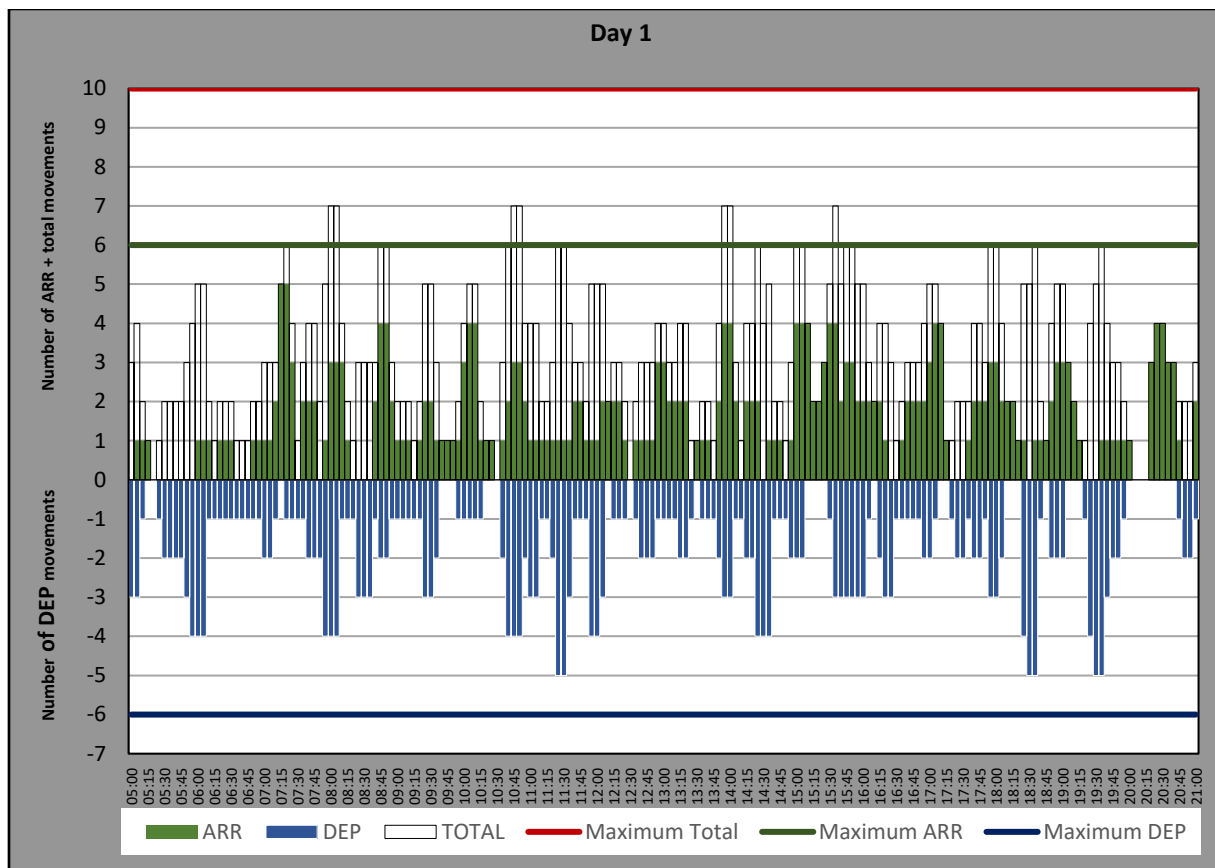
EOS W22 Typical Week Histogram – Runway Allocation

TOTAL Movements – 60 minute count rolling every 10 minutes (R60/10)



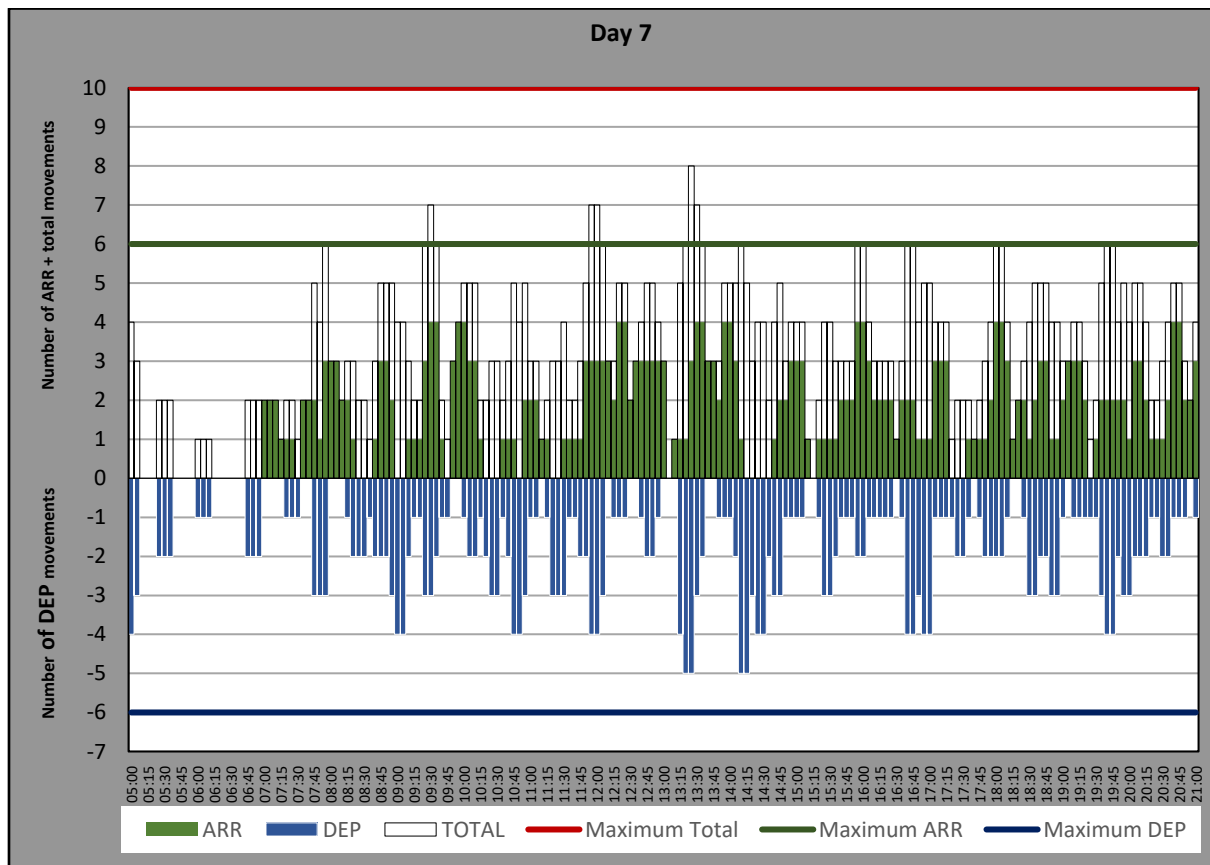
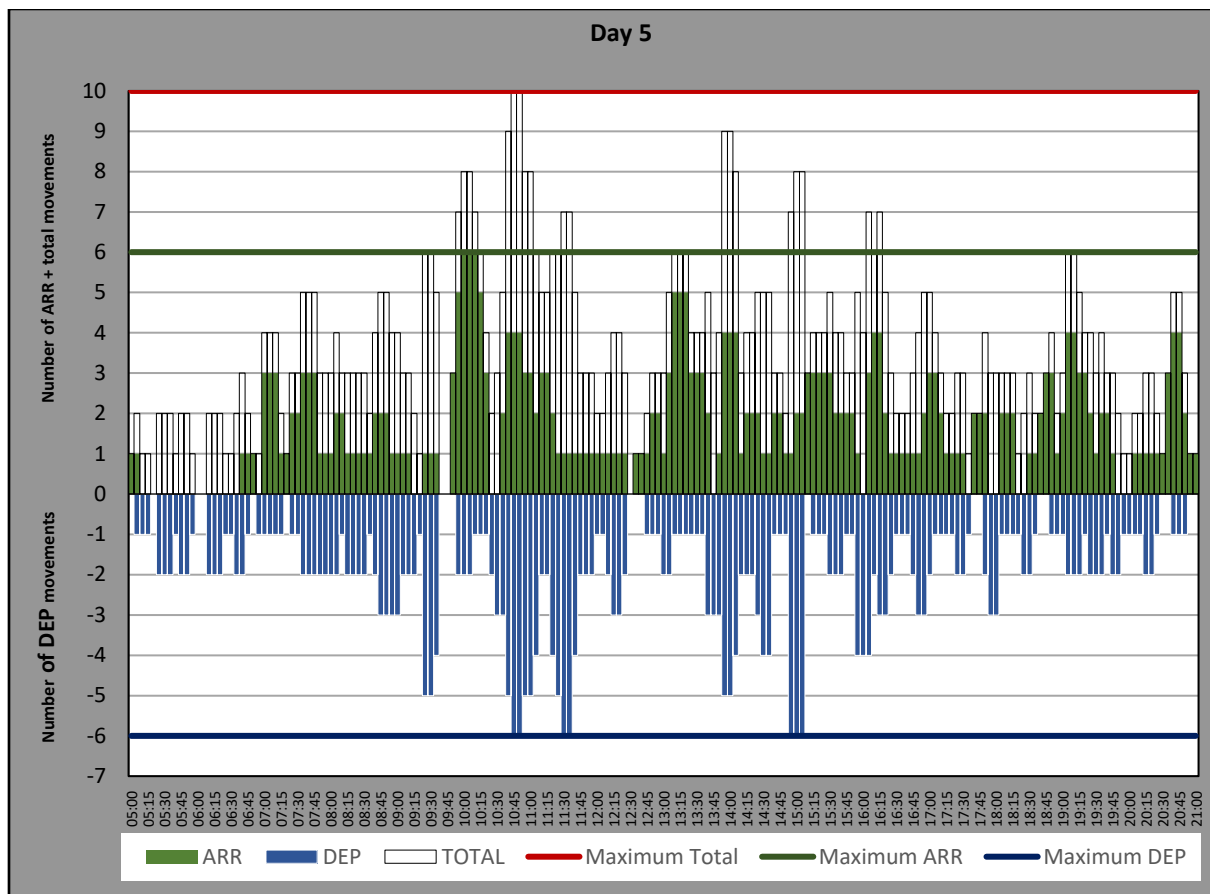
EOS W22 Typical Week Histogram – Runway Allocation

ARRIVAL + DEPARTURE + TOTAL – 10 minute count rolling every 5 minutes (R10/5) – top days



EOS W22 Typical Week Histogram – Runway Allocation

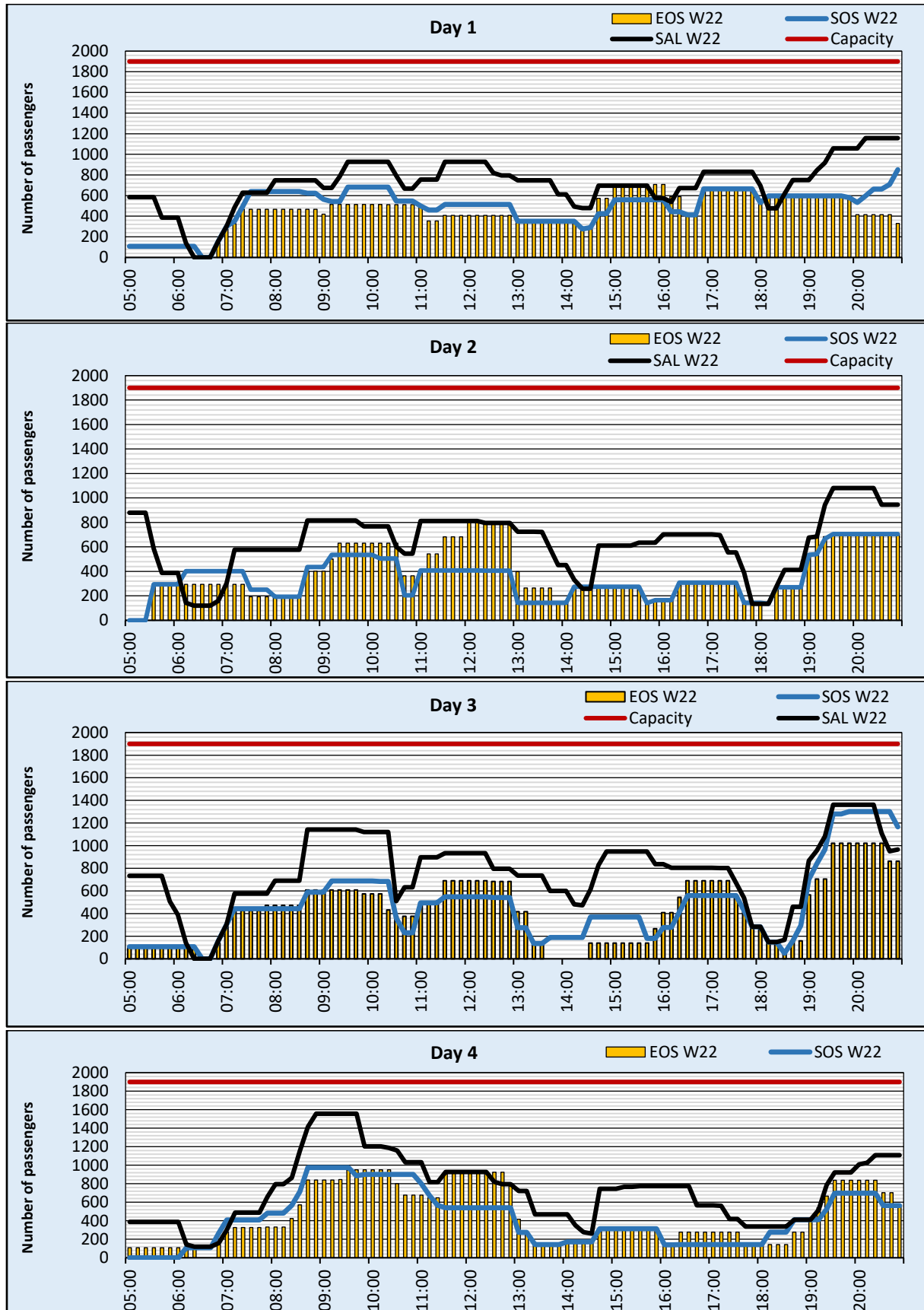
ARRIVAL + DEPARTURE + TOTAL – 10 minute count rolling every 5 minutes (R10/5)



EOS W22 Typical Week Histogram – Passengers

ARRIVAL – 60 minute count rolling every 10 minutes (T60/10)

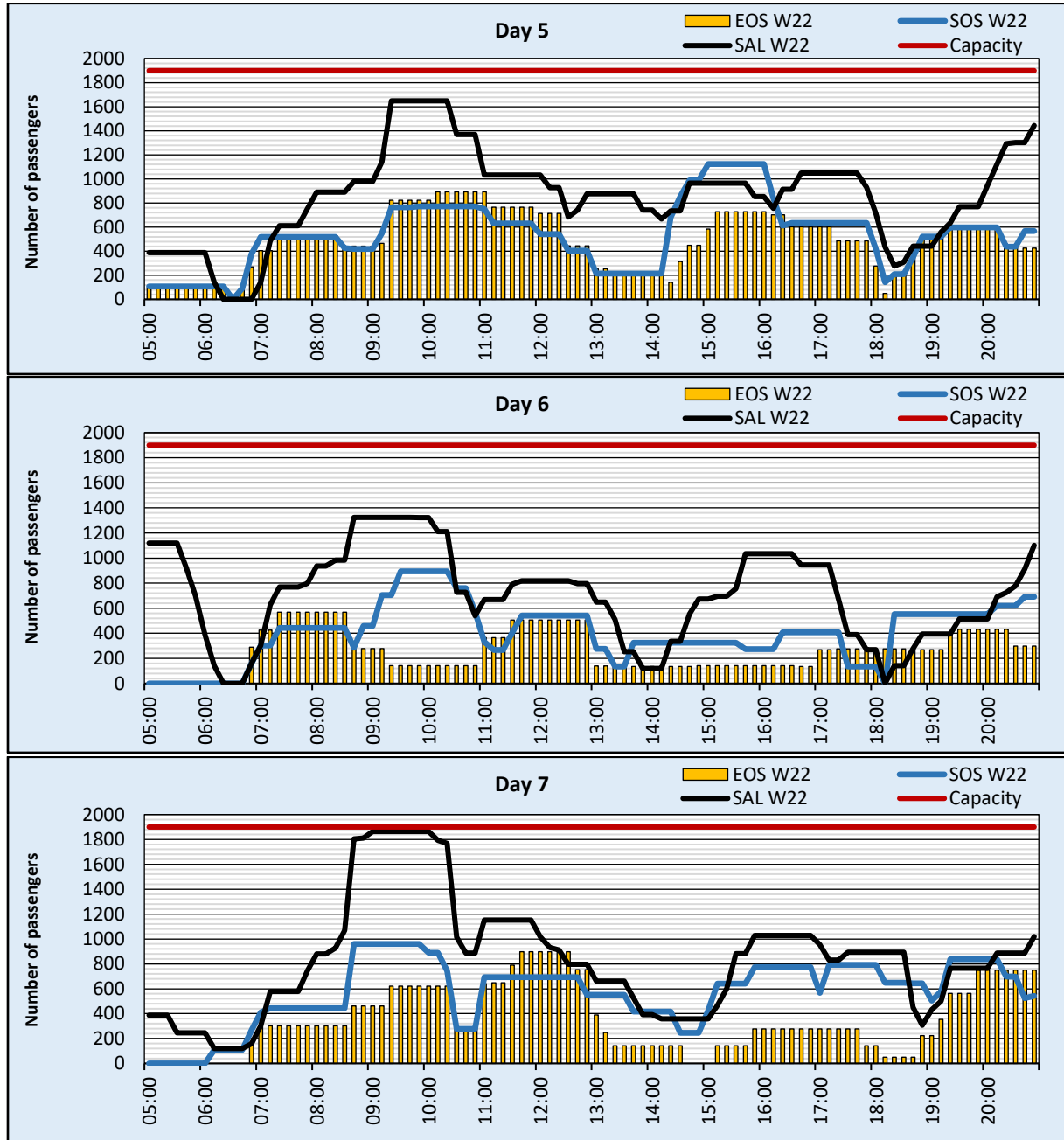
Terminal T1 – Non-Schengen



EOS W22 Typical Week Histogram – Passengers

ARRIVAL – 60 minute count rolling every 10 minutes (T60/10)

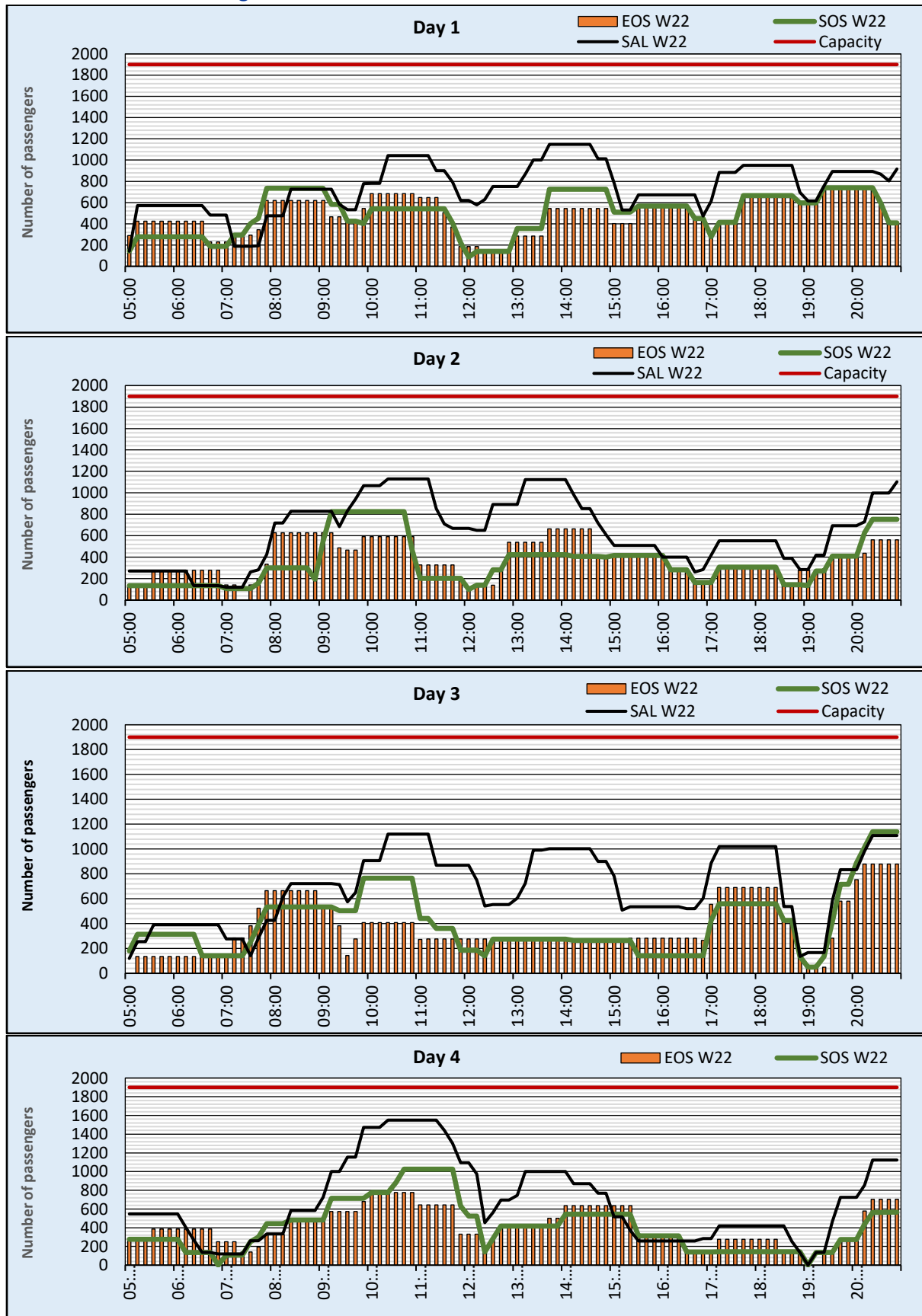
Terminal T1 – Non-Schengen



EOS W22 Typical Week Histogram – Passengers

DEPARTURE – 60 minute count rolling every 10 minutes (T60/10)

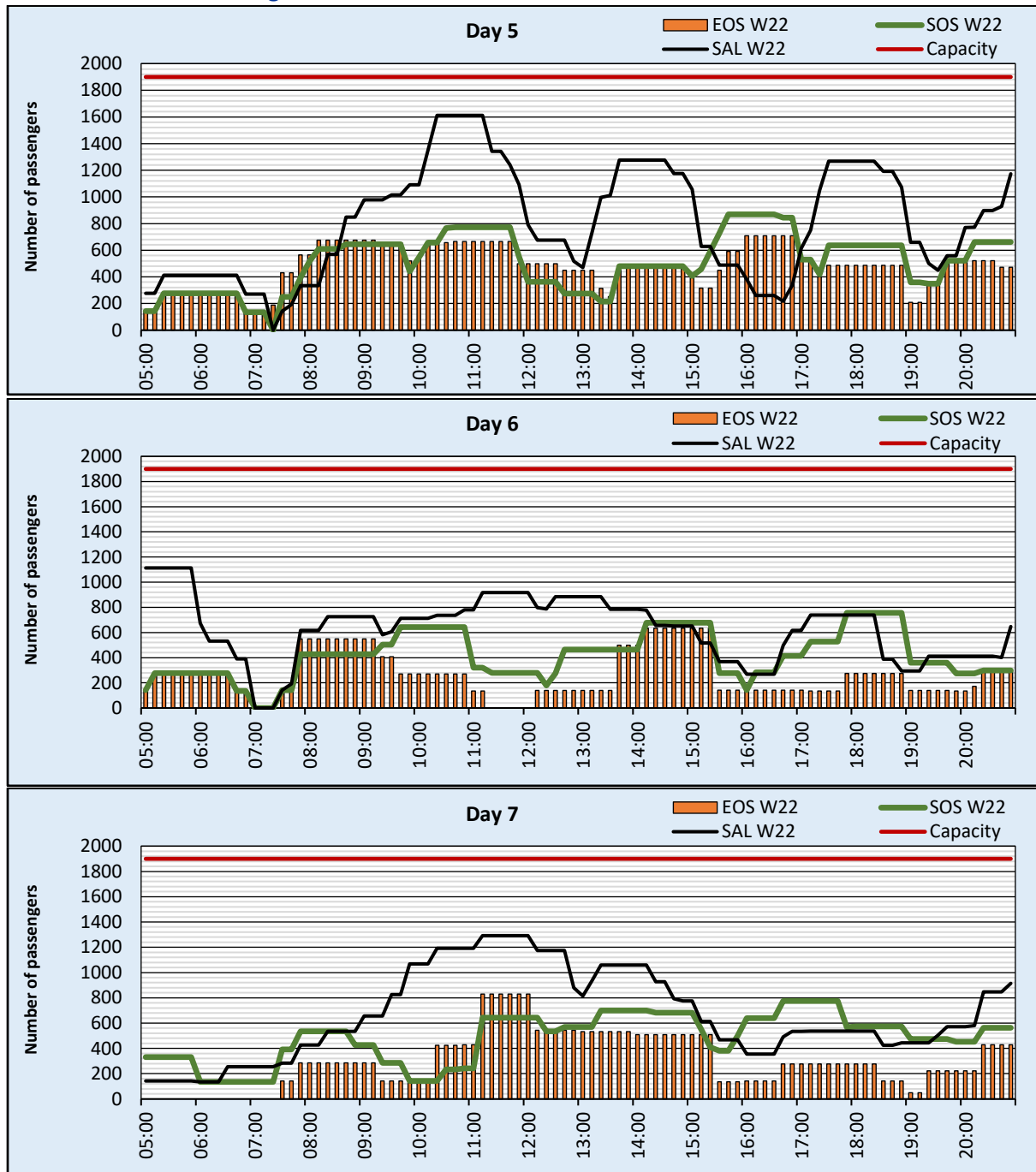
Terminal T1 – Non-Schengen



EOS W22 Typical Week Histogram – Passengers

DEPARTURE – 60 minute count rolling every 10 minutes (T60/10)

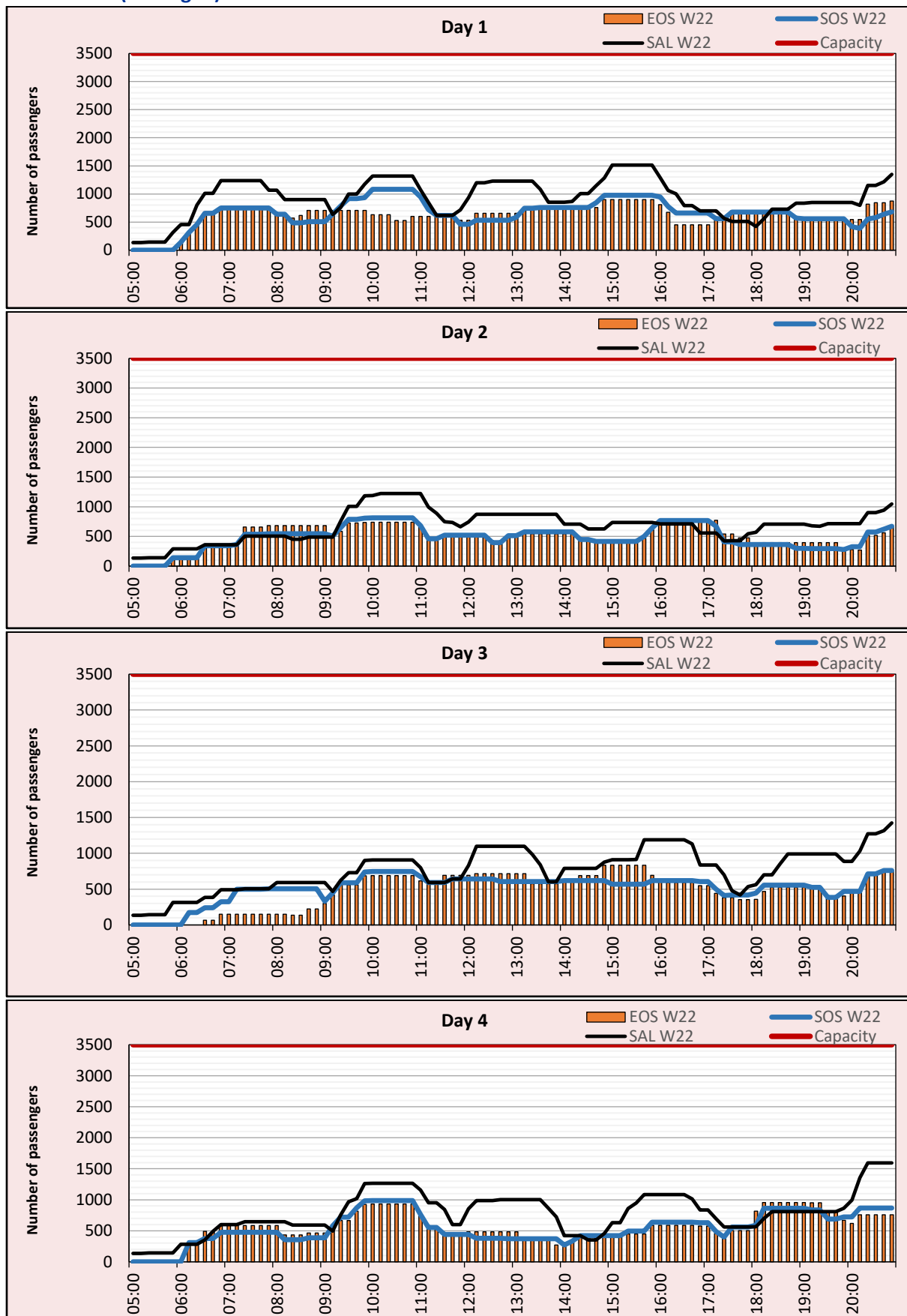
Terminal T1 – Non-Schengen



EOS W22 Typical Week Histogram – Passengers

ARRIVAL – 60 minute count rolling every 10 minutes (T60/10)

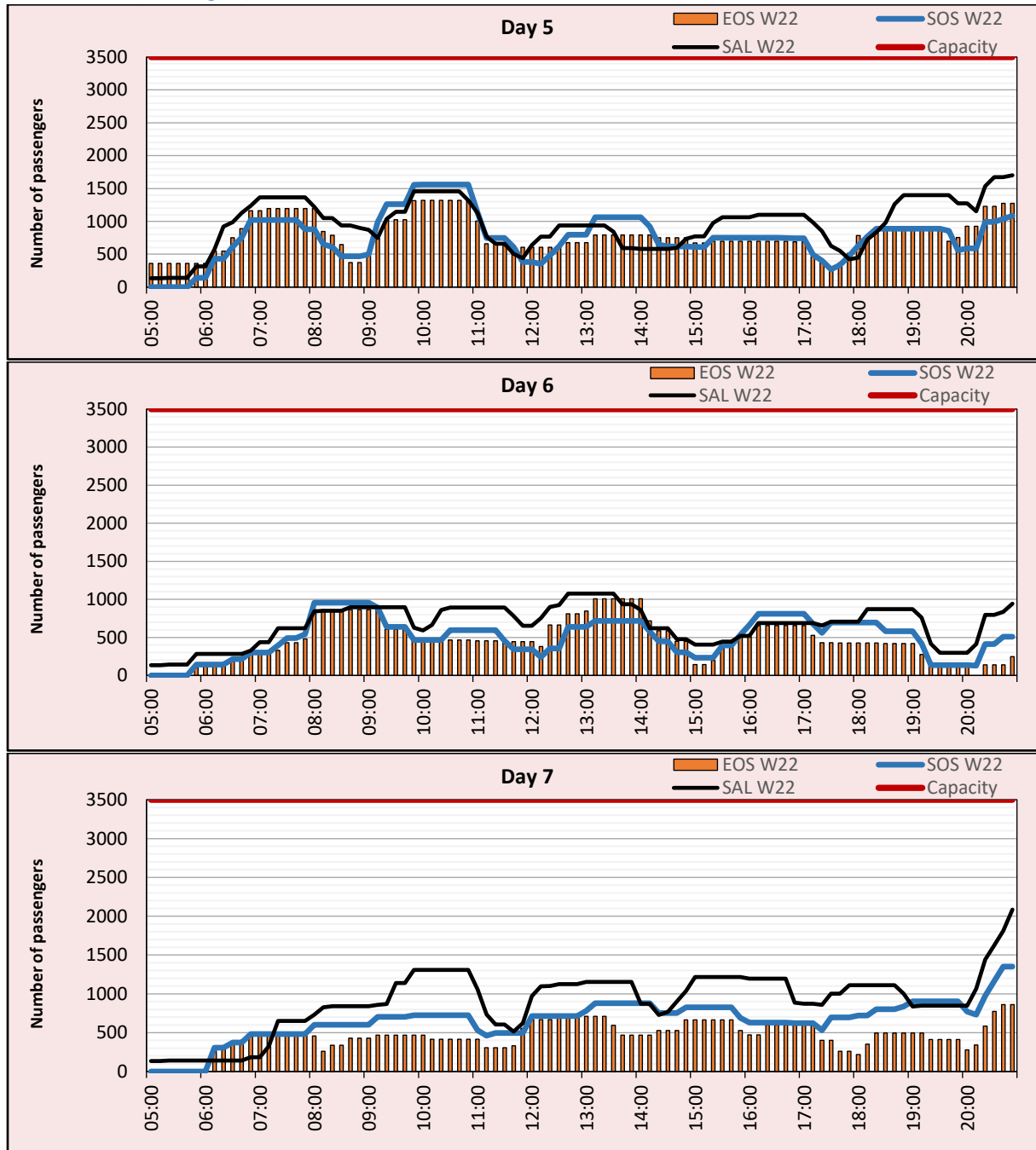
Terminal T2 (Schengen)



EOS W22 Typical Week Histogram – Passengers

ARRIVAL – 60 minute count rolling every 10 minutes (T60/10)

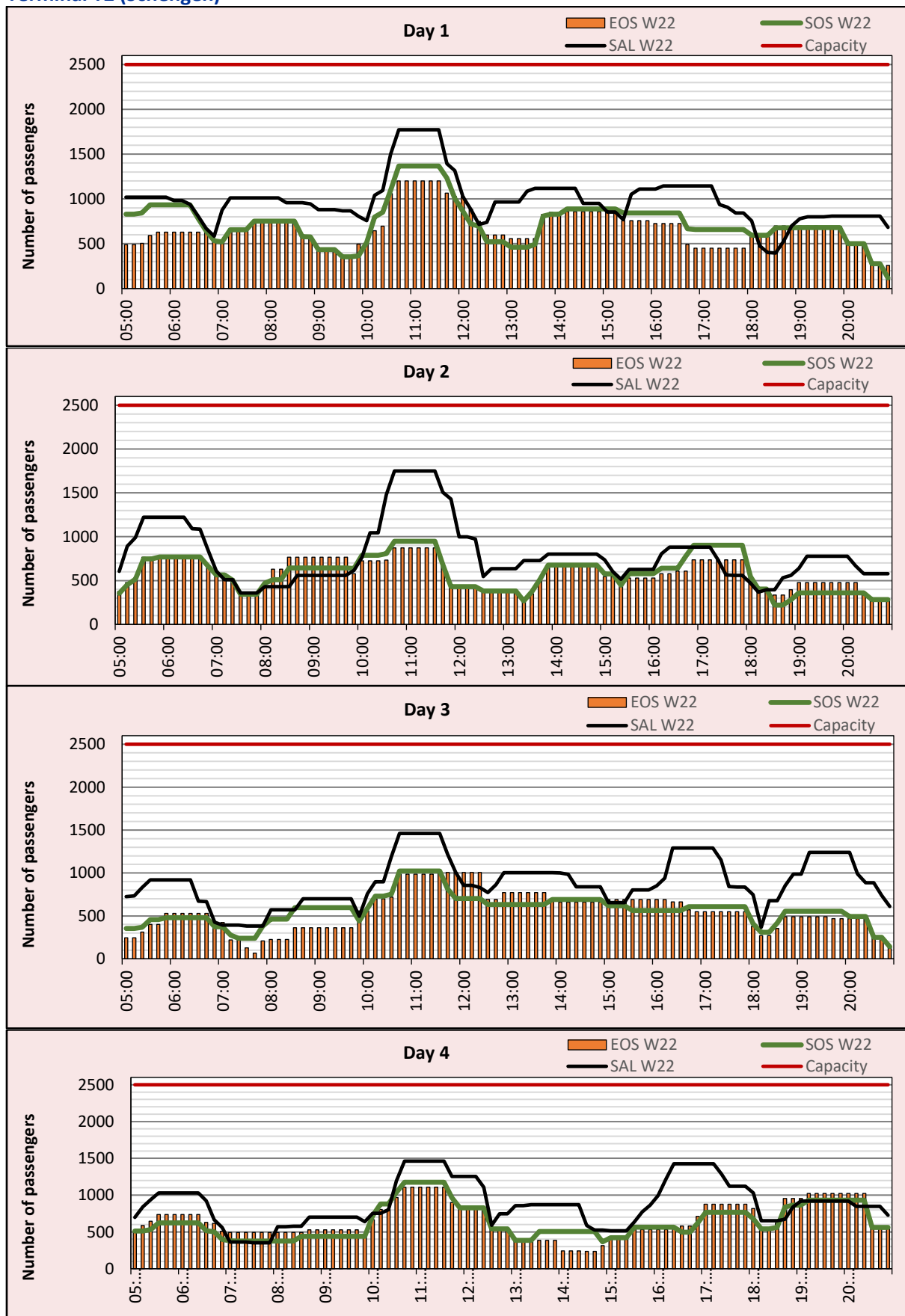
Terminal T2 (Schengen)



EOS W22 Typical Week Histogram – Passengers

DEPARTURE – 60 minute count rolling every 10 minutes (T60/10)

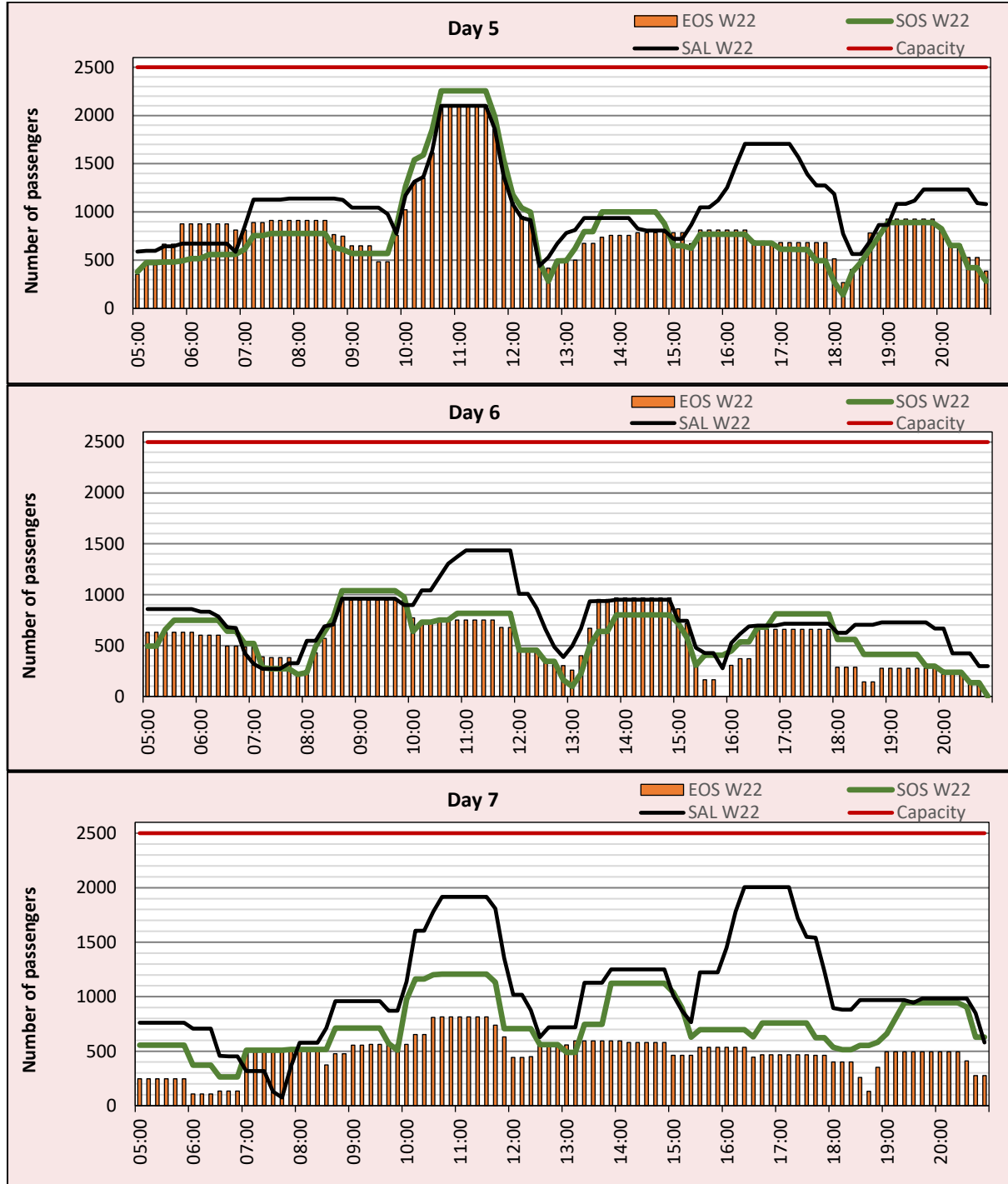
Terminal T2 (Schengen)



EOS W22 Typical Week Histogram – Passengers

DEPARTURE – 60 minute count rolling every 10 minutes (T60/10)

Terminal T2 (Schengen)



Glossary

Air Transport Movement (ATM)	Any aircraft movement which is either a scheduled, chartered passenger or cargo flight (IATA service type codes J, G, C, F, H, A).
Cargo Transport Movements (CATM)	Any aircraft movement which is either a scheduled or chartered or additional cargo flight (IATA service type codes F, H, A)
Demand	Unconstrained demand before any schedule adjustments have been made
GA/BA flights	General aviation and business aviation flights
End of Season (EOS)	Snapshot of schedule shortly after the end of the scheduling season (exact date given where used).
Historical slots (SHL)	Snapshot of historic schedule obtained from the previous equivalent season - as advised to airlines in the SHLs.
IATA Slot Conference (SC)	Snapshot after the end of the IATA Slot Conference
ICAO Size A	Aircraft with wingspan between 0.00m - 14.99m.
ICAO Size B	Aircraft with wingspan between 15.00m - 23.99m.
ICAO Size C	Aircraft with wingspan between 24.00m - 35.99m.
ICAO Size D	Aircraft with wingspan between 36.00m - 51.99m.
ICAO Size E	Aircraft with wingspan between 52.00m - 64.99m.
ICAO Size F	Aircraft with wingspan between 65.00m - 80.00m.
ICAO Size H	Helicopters
Initial Coordination (SAL)	Snapshot of schedule immediately after Initial Coordination is completed - as advised to airlines in the SALs.
Passenger Air Transport Movement (PATM)	Any aircraft movement, which is either a scheduled or chartered passenger flight (service type codes J, G, C).
Other Air Transport Movement (OATM)	Any aircraft movement, which is not either a scheduled, chartered passenger, GA/BA or cargo flight (service type codes E, I, K, L, O, P, T, W, X, Y)
Start of Season (SOS)	Snapshot of schedule shortly before the start of the scheduling season (exact date given below where used).
Time: UTC	Times shown are in Universal Time Constant (UTC).
Total Air Transport Movements (TATM)	Completely all aircraft movements in a given season including flights GA/BA (all IATA service type codes)
Typical week	Typical week for S22 is Mon 08AUG 2022 to Sun 14AUG 2022 Typical week for S21 is Mon 09AUG 2021 to Sun 15AUG 2021
<u>Data snapshot descriptions</u>	
W21 EOS	W21 schedule as cleared on 28MAR 2022
W22 SHL	W22 schedule as cleared on 15MAY 2022
W22 SAL	W22 schedule as cleared on 09JUN 2022
W22 SOS	W22 schedule as cleared on 31OCT 2022
W22 EOS	W22 schedule as cleared on 26MAR 2023

Slot mobility

No transfers or exchanges under Art. 10.8. within W22 season.

Monitoring report

Slot misuse	- no records for W22 season.
Late handback	- no records for W22 season.
Sanctions	- no records for W22 season.
Exemptions 14.1	- no records for W22 season.

Minor violation of the slot policy resulted only in warning given to the air carrier.

Coordination committee

The Coordination Committee has been established to advise and assist to the coordinator to carry out the following tasks in accordance with the requirements of the Law No. 49/1997 issued by the Ministry of Transport of the Czech Republic.

Its existence covers:

- examine the possibilities to increase the currently determined capacity of the airport,
- determine the ways of achieving a better utilisation of the capacity available,
- monitoring of the usage of the slots allocated.

The list of members :

Airline Operators Committee (AOC)
Air Traffic Control
Airport Prague
Smartwings
Czech Airlines
Ryanair
ABS Jets
Menzies Aviation
Czech Airlines Handling
Czech GH
Civil Aviation Dept. (as observer)
Civil Aviation Authority (as observer)
Slot Coordination Czech Republic (as observer)

Main topic for the meeting of the Coordination Committee was the airport capacity presentation for W22 season. Offered capacities were approved by all the members.

Conclusion

This report provides the requested information and statistics for Vaclav Havel Airport Prague (PRG/LKPR) for season W22. It has been created by Slot Coordination Czech Republic for the next possible usage by DG Move.

Should you require more Information, do not hesitate to contact us at:

Slot Coordination Czech Republic

Aviatická 1017/2

Airport Prague

161 00 Prague 6 - Ruzyně

e-mail: slot.coord@prg.aero

WEB: www.slot-czech.cz