



# THE ANNUAL REPORT

SEASON

S24

**Prague Airport (PRG – LKPR)**

Page	Content
	<a href="#">General</a>
2	Table of content, Introduction
3	Headlines
	<a href="#">Analytic section</a>
4	Airport Capacity – Runway
5	Airport Capacity - Terminals and Parking Stands
6	SHL S24 - ATM Allocation by Operator
7	SAL S24 - ATM Allocation by Operator
8	SAL S24 - ATM Allocation and Slot Adjustment Distribution by Operator
9	SOS S24 - ATM Allocation by Operator
10	EOS S24 - ATM Allocation and Seats Capacity by Operators
11	EOS S24 Full Season – Total ATM Analysis
12	EOS S24 Full Season – Passenger ATM Seats Analysis
13	EOS S24 Full Season – Terminal Analysis
14	EOS S24 Full Season – Aircraft Size Analysis
15	EOS S24 Full Season – Seasonality (Movements and Seat Capacity)
16	EOS S24 Typical Week Histogram – Runway Allocation R60/10
17	EOS S24 Typical Week Histogram – Runway Allocation R10/5
19	EOS S24 Typical Week Histogram – Passengers Arrival – Terminal T1 Non-Schengen (T60/10)
20	EOS S24 Typical Week Histogram – Passengers Departure – Terminal T1 Non-Schengen (T60/10)
21	EOS S24 Typical Week Histogram – Passengers Arrival – Terminal T2 Schengen (T60/10) +
22	EOS S24 Typical Week Histogram – Passengers Departure – Terminal T2 Schengen (T60/10)
23	Glossary
	<a href="#">Local information and data</a>
24	Slot mobility – transfers/exchanges
	Monitoring report – misuse, late handback, sanctions, exemption 14.1
	Coordination committee
	<a href="#">Report End</a>
25	Conclusion

## Introduction

This report contains the general total data for S24 season. Time UTC.

This report refers to Vaclav Havel Airport Prague.

It is Level 3 airport, IATA/ICAO: PRG/LKPR

The coordination software used: **Score, ver. 6.12.9.26**

The online coordination is in use.

The coordination process is conducted in full compliance with EU Reg. 95/93, 793/2004, IATA Worldwide Scheduling Guidelines, IATA Standard Schedules Information Manual and Czech Law, which says that Slot Coordination Czech Republic is delegated to achieve of Coordination function according to decision of the Civil Aviation Authority Czech Republic in accordance with the paragraph No.32, part 1 and 2 of Law No. 49/1997, about Civil Aviation and in accordance with Law No. 455/1991.

## Headlines

	S24 EOS	S23/S22 EOS	S23 EOS	S24 SOS	S24 SAL	S24 SHL
Total Air Transport Movements (TATM)	84 425	109,2%	77 293	76 679	87 825	65 347
Passenger Air Transport Movements (PATM)	71 152	110,5%	64 390	74 732	85 833	64 189
Cargo Air Transport Movements (CATM)	1 420	97,5%	1 457	1 432	1 992	1 158
Other Air Transport Movements (OATM)	1 909	117,7%	1 622	270	0	0
GA/BA Air Transport Movements (GABA)	9 944	101,2%	9 824	245	0	0
Total PATM Seats Capacity	12 683 169	112,5%	11 270 019	13 283 992	15 522 260	
Average Seats per PATM	178,3	101,9%	175,0	177,7	180,8	
Percentage of allocated slots cleared as requested				97,7%	92,0%	
Number of Passengers all Season	10 671 552	111,5%	9 567 957			

## Calendar of Coordination Activities S24 Season

SHL Deadline	11SEP 2023
Initial Submission Deadline	05OCT 2023
SAL Deadline	02NOV 2023
IATA Slot Conference	14 – 17NOV 2023 (Dubai)
Series Return Deadline	15DEC 2023
Historic Baseline Date	31JAN 2024
Start of Season	31MAR 2024
End of Season	26OCT 2024

S24 scheduling season ran from Sunday 31MAR 2024 to Saturday 26OCT 2024 (210 days)

S23 scheduling season ran from Sunday 26MAR 2023 to Saturday 28OCT 2023 (217 days)

## Disclaimer

No warranty whether expressed or implied as to the completeness, accuracy, fitness for purpose, or satisfactory quality is given by Slot Coordination Czech Republic regarding the information in this report, which is provided by third parties. Accordingly, Slot Coordination Czech Republic excludes all liability with regard to such data.

The contents of this report may not be reproduced without the written consent of Slot Coordination Czech Republic

# Declared Airport Capacity

## Runway Capacity

S24					Change: S24 vs. S23			S23				
Periods		10mins						10mins			Periods	
Time (UTC)		ARR	DEP	Total				ARR	DEP	Total	Time (UTC)	
0:00	0:55	6	6	10	x	x	x	6	6	10	0:00	0:55
1:00	1:55	6	6	10	x	x	x	6	6	10	1:00	1:55
2:00	2:55	6	6	10	x	x	x	6	6	10	2:00	2:55
3:00	3:55	6	6	10	x	x	x	6	6	10	3:00	3:55
4:00	19:55	6	6	10	x	x	x	6	6	10	4:00	19:55
20:00	20:55	6	6	10	x	x	x	6	6	10	20:00	20:55
21:00	21:55	6	6	10	x	x	x	6	6	10	21:00	21:55
22:00	22:55	6	6	10	x	x	x	6	6	10	22:00	22:55
23:00	23:55	6	6	10	x	x	x	6	6	10	23:00	23:55

Periods		60mins						60mins			Periods	
Time (UTC)		ARR	DEP	Total				ARR	DEP	Total	Time (UTC)	
0:00	1:55		0						0		0:00	1:55
4:00	19:55	33	33	46	x	x	x	33	33	46	4:00	19:55

Periods		480mins						480mins			Periods	
Time (UTC)		Total						Total			Time (UTC)	
20:00	20:55	48**)			x			48			20:00	20:55
21:00	21:55										21:00	21:55
22:00	22:55										22:00	22:55
23:00	23:55										23:00	23:55
0:00	0:55										0:00	0:55
1:00	1:55										1:00	1:55
2:00	2:55										2:00	2:55
3:00	3:55										3:00	3:55

\*\*\*) Take-offs and landings are only permitted for aircraft with an MTOW of less than 45t or the aircraft types with an MTOW 45t and higher listed in the "List of Aircrafts Permitted for Night Operation"

**Each particular aircraft is obliged to comply with standards for being listed in one of noise categories from 1 to 9!**

### List of Aircrafts Permitted for Night Operation (according to the IATA code)

141, 142, 143, 146, 14F, 14X, 14Y, 14Z,  
 221, 223, 290, 295, 318, 319, 31N, 320, 32N, 32Q, 321, 32A, 32B, 32C, 32D, 332, 333, 338, 339, 342, 343, 345, 346, 351, 359,  
 380, 388  
 717, 734, 735, 736, 738, 739, 73C, 73E, 73G, 73H, 73J, 73W, 7M1, 7M7, 7M8, 7M9, 7S8, 74H, 74N, 752, 753, 75M, 75T, 75W,  
 763, 764, 76W, 772, 773, 77L, 77W, 781, 788, 789,  
 AB6, AR1, AR7, AR8, ARJ, CC6, CCX, E90, E95, GJ6, SU1, SU7, SU9

## Declared Airport Capacity

### Terminal Capacity

S24			Change: S24 vs. S23		S23			
Period		60mins		60mins	Period			
Terminal	Constraint				Constraint	Terminal		
Terminal T1 <i>Non-Schengen</i>	Gates	22	x	22	Gates	Terminal T1 <i>Non-Schengen</i>		
	PAX flow	ARR	1900	x	1900		ARR	
		DEP	1900	x	1900		DEP	
		Total	3800	x	3800		Total	
Terminal T2 <i>Schengen</i>	Gates	27	-1	28	Gates	Terminal T2 <i>Schengen</i>		
	PAX flow	ARR	3500	x	3500		ARR	
		DEP	2500	x	2500		DEP	
		Total	5600	x	5600		Total	
Terminal T3 <i>GA/BA Special</i>	Gates	2	x	2	Gates	Terminal T3 <i>GA/BA Special</i>		
	PAX flow	ARR	120	x	120		ARR	
		DEP	70	x	70		DEP	
		Total	190	x	190		Total	

### Parking Stands

S24		Change: S24 vs. S23		S23	
Period	60mins		60mins	Period	
Wing span	Number of stands		Number of stands	Wing span	
total	49	-2	51	total	
up to 80m	1	x	1	up to 80m	
from up to 65m	5	x	5	from up to 65m	
from up to 52m	2	x	2	from up to 52m	
from up to 39m	1	x	1	from up to 38m	
up to 36m	35	x	35	up to 36m	
up to 34,5m	0	-2	2	up to 34,5m	
up to 29m	5	x	5	up to 29m	

## SHL S24 - ATM Allocation by Operator (Comparison between S24 SHL vs. S23 SHL)

Operator	ICAO	IATA	SHL S24 ATMs	SHL S23 ATMs	+/- change	S24 Rank
Aegean Airlines	AEE	A3	420	404	16	29
Aer Lingus	EIN	EI	284	248	36	36
Air Baltic	BTI	BT	352	248	104	34
Air Cairo	MSC	SM	180	124	56	44
Air France	AFR	AF	1 464	1 172	292	11
Air Malta	AMC	KM	180	154	26	44
Air Montenegro	MNE	MNE	154	66	88	48
Air Serbia	ASL	JU	566	226	340	23
AMC Airlines	AMV	AMV	30	0	30	63
Arkia Airlines	AIZ	IZ	0	14	-14	70
ASL Airlines (CARGO)	TAY	3V	540	558	-18	24
Austrian Airlines	AUA	OS	1 252	1 302	-50	13
Azerbaijan Airlines	AHY	J2	120	86	34	51
Belavia	BRU	B2	0	0	0	70
BH Air	BGH	8H	10	0	10	67
Blue Air	BLA	OB	0	112	-112	70
Blue Bird Airways	BBG	BZ	0	0	0	70
British Airways	BAW	BA	2 058	1 521	537	7
Brussels Airlines	BEL	SN	984	750	234	18
Bul Air	BVL	LB	0	44	-44	70
Bulgaria Air	LZB	FB	264	240	24	39
Corendon Airlines	CAI	XC	30	28	2	63
Croatia Airlines	CTN	OU	132	32	100	50
Cyprus Airways	CYP	CY	82	0	82	55
Czech Airlines	CSA	OK	1 941	1 939	2	9
Delta Air Lines	DAL	DL	290	204	86	35
EasyJet	EZY,EJU, EZS	EZY	3 172	3 636	-464	5
El Al Israel Airlines	ELY	LY	638	352	286	20
Emirates	UAE	EK	420	434	-14	29
European air Charter	BUC	BUC	42	26	16	59
Eurowings AG	EWG	EW	4 170	3 251	919	3
Finnair	FIN	AY	1 114	900	214	17
Fly Play	FPY	OG	110	100	10	52
flydubai	FDB	FZ	372	382	-10	32
Flynas	KNE	XY	62	88	-26	57
Flyr	FOX	FX	0	50	-50	70
Freebird Airlines	FH	FHY	70	0	70	56
China Airlines	CAL	CI	36	0	36	61
China Eastern Airlines	CES	MU	0	248	-248	70
Iberia	IBE	IB	480	330	150	26
Icelandair	FI	ICE	172	0	172	47
Israir Airlines	ISR	6H	102	112	-10	53
Jazeera Airways	JZR	J9	50	48	2	58
Jet2.com	EXS	LS	410	348	62	31
KLM	KLM	KL	1 984	1 736	248	8
Korean Air	KAL	KE	240	248	-8	40
LOT Polish Airlines	LOT	LO	1 864	1 800	64	10
Lufthansa	DLH	LH	3 350	2 989	361	4
Luxair	LGL	LG	240	186	54	40
Mavi Gok Airlines	MGH	4M	14	0	14	65
NEOS	NOS	NO	0	10	-10	70
Norwegian	NAX,IBK	DY,D8	1 164	974	190	15
Nouvelair	LBT	BJ	34	22	12	62
Pegasus Airlines	PGT	PC	480	434	46	26
Privat Wings	PWF	PWF	149	144	5	49
Qatar Airways	QTR	QR	512	400	112	25
Qatar Airways (CARGO)	QTR	QR	6	62	-56	69
Ryanair	RZR	FR, RK	8 463	7 265	1 198	2
Salam Air	OMS	OV	10	0	10	67
SAS	SAS	SK	228	32	196	42
SCAT Airlines	VSV	DV	0	0	0	70
Sichuan Airlines	CSC	3U	0	124	-124	70
SkyUp Airlines	SQP	PQ	842	856	-14	19
Smartwings	TVS	QS	13 930	13 819	111	1
Sunexpress Aviation	SXS	XQ	366	138	228	33
SWISS	SWR	LX	1 274	1 254	20	12
Tailwind Airlines	TWI	TWI	88	40	48	54
TAP Portugal	TAP	TP	462	480	-18	28
TAROM	ROT	RO	210	248	-38	43
Transavia	TRA	HV	266	274	-8	38
Transavia France	TVF	TO	278	256	22	37
Turkish Airlines	THY	TK	1 174	868	306	14
Turkish Airlines (CARGO)	THY	TK	12	88	-76	66
Ukraine International	AUI	PS	598	618	-20	22
UPS (CARGO)	UPS	UPS	600	620	-20	21
Uzbekistan Airways	UZB	HY	38	36	2	60
Volotea	VOE	VOE	176	316	-140	46
Vueling	VLG	VY	1 132	928	204	16
Wizz Air	WZZ,WUK	W4,6,9	2 410	1 734	676	6
<b>TOTAL</b>			<b>65 347</b>	<b>58 776</b>		

# SAL S24 - Slot Allocation by Operator

Historical, History Modification, New Flights, New Entrants

Operator	IATA	ICAO	Allocated Slots	Maintain Historics	Modify Historics	New Slots	New Entrant
ASL Airlines (CARGO)	3V	TAY	540	540			
Mavi Gok Airlines	4M	MGH	92	14		78	
FlyOne	5F	FIA	70			70	
Israir Airlines	6H	ISR	178	60	30	88	
BH Airlines	8H	BGH	10	10			
Air Moldova	9U	MLD	240			240	
Aegean Airlines	A3	AEE	420	300	120		
Air France	AF	AFR	1 680		1 680		
Finnair	AY	FIN	1 260	360	840	60	
British Airways	BA	BAW	2 350	400	1 650	300	
Nouvelair Tunisie	BJ	LBT	34	34			
Air Baltic	BT	BTI	420	300	60		60
Blue Bird Airways	BZ	BBG	180			180	
China Airlines	CI	CAL	120	22	98		
Cyprus Airways	CY	CYP	82	82			
Delta Airlines	DL	DAL	374		374		
Norwegian	DY	NOZ	1 594	950	136	508	
Aer Lingus	EI	EIN	326	284			42
Emirates	EK	UAE	420	420			
Eurowings AG	EW	EWG	5 582	437	3 730	1 415	
EasyJet	EZY	EZY	4622	1 106	2 262	1 254	
Bulgaria Air	FB	LZB	402	282		120	
Freebird Airlines	FH	FHY	210	80		130	
Icelandair	FI	ICE	418	238			180
Ryanair	FR	RZR	13 313	1 134	6 557	5 622	
FlyEgypt	FT	FEG	100			100	
FedEx (CARGO)	FX	FDX	540			540	
flydubai	FZ	FDB	420	240	180		
Transavia	HV	TRA	284	226	40		18
Iberia	IB	IBE	900		540	360	
Azerbaijan Airlines	J2	AHY	178	178			
Jazeera Airways	J9	JZR	156	80		76	
Air Serbia	JU	ASL	840		420		420
Korean Air	KE	KAL	240	240			
KLM	KL	KLM	2 082	1 830	252		
Air Malta	KM	AMC	180			180	
Kuwait Airways	KU	KAC	104				104
Luxair	LG	LGL	240	60	180		
Lufthansa	LH	DLH	3 360	1 020	2 340		
LOT Polish Airlines	LO	LOT	2 049	1 200	720	129	
Jet2.com	LS	EXS	544	168	266	110	
SWISS	LX	SWR	1 694	840	434	420	
El Al Israel Airlines	LY	ELY	720	120	540		60
Eznis Airways	MG	EZA	152			152	
Air Montenegro	MNE	MNE	154		154		
Fly Play	OG	FPY	420		120	300	
Czech Airlines	OK	CSA	2 741	210	1 991	540	
Austrian Airlines	OS	AUA	1 260	420	840		
Croatia Airlines	OU	CTN	252		132		120
SalamAir	OV	OMS	70		10	60	
Pegasus Airlines	PC	PGT	600	360	120		120
SkyUp Airlines	PQ	SQP	842	842			
Ukraine International	PS	AUI	598	598			
Qatar Airways	QR	QTR	840	600			240
Qatar Airways (CARGO)	QR	QTR	120			120	
Smartwings	QS	TVS	18 404	4 135	10 056	4 107	106
TAROM	RO	ROT	240	60	180		
SAS	SK	SAS	580	226	76	278	
Air Cairo	SM	MSC	298		180	118	
Brussels Airlines	SN	BEL	1 080		984	96	
Turkmenistan Airline	T5	TUA	120			120	
Turkish Airlines	TK	THY	1260	1 260			
Turkish Airlines (CARGO)	TK	THY	240			240	
Transavia France	TO	TVF	360	240	60		60
TAP Portugal	TP	TAP	840	60	420		360
Tailwind	TWI	TWI	166		88	78	
UPS (CARGO)	UPS	UPS	600	600			
Volotea	VOE	VOE	444	98		346	
Vueling	VY	VLG	1 272	614	598	60	
Wizz Air	W6	WZZ	4 342	2 686	404	1 252	
World2fly	WFL	WFL	60		60		
Corendon Airlines	XC	CAI	30		30		
SunExpress	XQ	SXS	522		402		120
Flynas	XY	KNE	140	72		68	
<b>TOTAL</b>			<b>88 615</b>	<b>26 336</b>	<b>40 354</b>	<b>19 915</b>	<b>2 010</b>





# SOS S24 - ATM Allocation by Operator

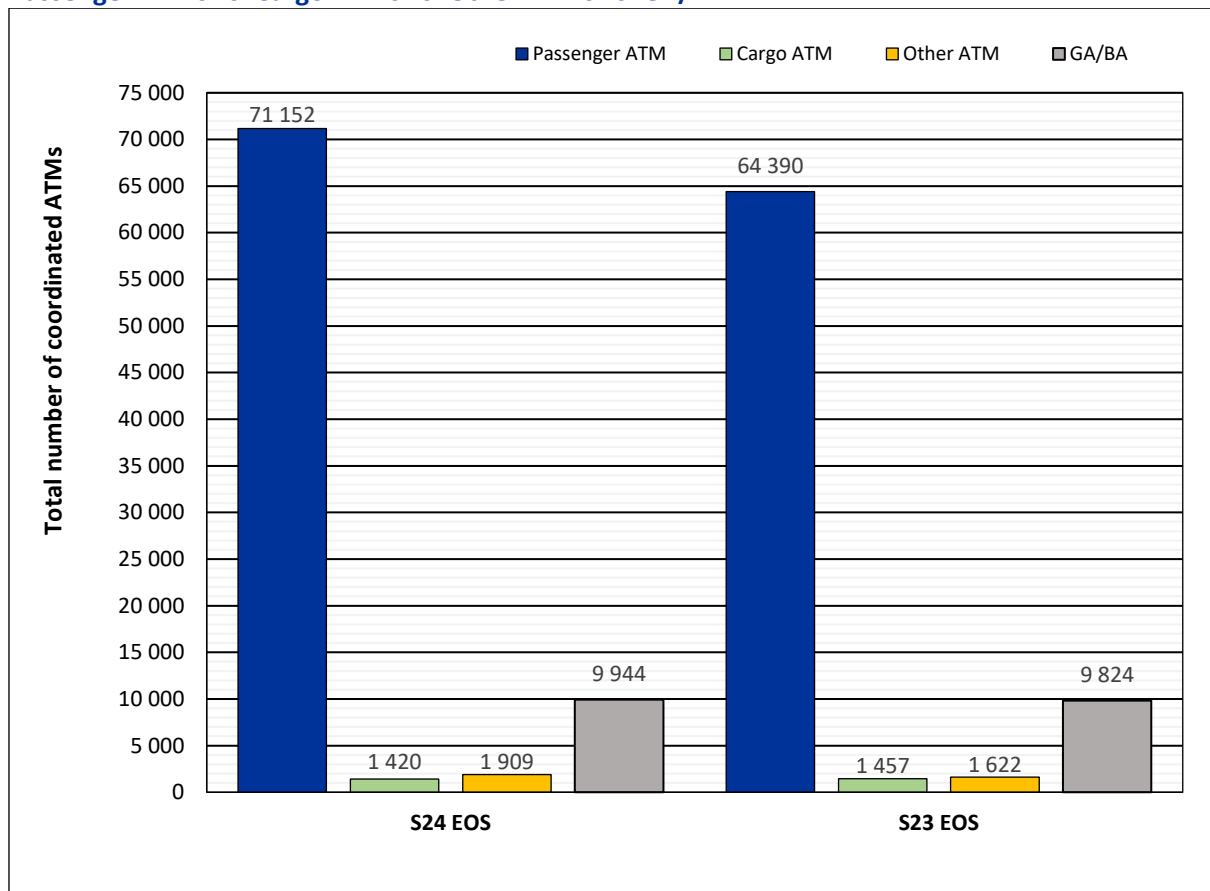
## Comparison S24 SOS vs. S23 SOS

FULL SEASON ALLOCATION										
Operator		ICAO code	SOS S24 ATMs	SOS S23 ATMs	+/- change	S24 Rank	SOS S24 seats capacity	SOS S23 seats capacity	+/- seats capacity change	S24 Rank
Aegean Airlines	A3	AEE	410	434	-24	35	73 120	77 024	-3 904	29
Aer Lingus	EI	EIN	326	292	34	38	56 724	50 808	5 916	36
Air Baltic	BT	BTI	420	362	58	33	62 100	54 450	7 650	34
Air Cairo	SM	MSC	232	270	-38	46	28 848	35 204	-6 356	47
Air France	AF	AFR	1 510	1 572	-62	11	261 028	245 550	15 478	10
Air Malta	KM	AMC	180	186	-6	51	32 400	32 736	-336	45
Air Moldova	9U	MLD	0	268	-268	72	0	43 944	-43 944	68
Air Serbia	JU	ASL	540	648	-108	25	37 952	42 772	-4 820	40
Airline GeoSky	GEL	GEL	100	0	100		14 800	0	14 800	
Arkia Israeli Airlines	IZ	AIZ	258	0	258	41	51 058	0	51 058	37
ASL Airlines (CARGO)	3V	TAY	538	558	-20	26	0	0	0	68
Austrian Airlines	OS	AUA	1 378	1 294	84	13	159 504	155 280	4 224	18
Azerbaijan Airlines	J2	AHY	180	126	54	51	26 744	18 156	8 588	48
Blue Bird Airways	BZ	BBG	188	186	2	50	35 532	35 082	450	42
British Airways	BA	BAW	2 108	2 010	98	8	379 440	367 152	12 288	7
Brussels Airlines	SN	BEL	968	1 016	-48	18	146 160	154 098	-7 938	21
Bulgaria Air	FB	LZB	358	276	82	37	42 504	33 844	8 660	39
Corendon Airlines	XC	CAI	0	38	-38	73	0	7 182	-7 182	68
Croatia Airlines	OU	CTN	130	132	-2	54	12 932	13 024	-92	59
Cyprus Airways	CY	CYP	60	102	-42	66	8 400	18 360	-9 960	61
Czech Airlines	OK	CSA	1 089	1 280	-191	17	195 498	224 824	-29 326	15
Delta Airlines	DL	DAL	300	290	10	39	63 310	61 550	1 760	33
EasyJet	EZY,EJU,EZS	EZY	4 084	3 376	708	4	727 462	607 442	120 020	5
Egyptair	MS	MSR	126	0	126	55	19 404	0	19 404	54
El Al	LY	ELY	736	648	88	20	122 176	117 020	5 156	23
Emirates	EK	UAE	420	434	-14	33	151 200	156 240	-5 040	19
Enter Air	ENT	ENT	23	101	-78	70	2 646	19 089	-16 443	64
European Air Charter	BUC	BUC	0	44	-44	74	0	7 216	-7 216	68
Eurowings AG	EW	EWG	4 166	4 349	-183	3	732 373	767 774	-35 401	4
Eznis Airways	MG	EZA	150	86	64	62	38 400	22 016	16 384	49
Finnair	AY	FIN	1 256	1 240	16	15	202 834	169 874	32 960	14
Fly PLAY	OG	FPY	108	110	-2	60	22 312	19 324	2 988	52
Flydubai	FZ	FDB	421	386	35	32	69 554	63 578	5 976	31
FlyEgypt	FT	FEG	102	0	102	61	18 972	0	18 972	55
FLYNAS	XY	KNE	70	60	10	65	12 180	10 200	1 980	60
Flyone	SF	FIA	76	0	76		13 680	0	13 680	
Freebird Airlines	FH	FHY	46	256	-210	68	8 280	46 080	-37 800	62
GA/BA Operators			243	211	32	45	1 191	810	381	66
Hainan Airlines	HU	CHH	116	128	-12	59	33 872	37 376	-3 504	44
China Airlines	CI	CAL	120	58	62	57	36 720	17 748	18 972	41
Iberia	IB	IBE	780	454	326	19	169 260	81 924	87 336	17
Icelandair	FI	ICE	212	172	40	48	33 920	27 520	6 400	43
Israir Airlines	6H	ISR	278	194	84	40	50 130	34 947	15 183	38
Jazeera Airways	J9	JZR	82	80	2	64	14 268	13 920	348	58
Jet2.com	LS	EXS	488	472	16	29	87 394	83 746	3 648	26
KLM	KL	KLM	2 460	2 026	434	7	350 424	292 576	57 848	8
Korean Air	KE	KAL	240	230	10	42	64 560	66 930	-2 370	32
LOT Polish Airlines	LO	LOT	1 938	1 976	-38	9	172 472	193 708	-21 236	16
Lufthansa	LH	DLH	3 338	3 379	-41	6	494 345	541 156	-46 811	6
Luxair	LG	LGL	240	248	-8	42	18 240	18 848	-608	56
Mavi Gok Airlines	4M	MGH	124	0	124	56	24 632	0	24 632	50
Norwegian	DY, D8	NAX	1 438	1 202	236	12	268 014	223 572	44 442	9
Nouvelair Tunisia	BJ	LBT	34	0	34		6 018	0	6 018	
Other Cargo Operators			0	0	0	75	0	0	0	68
Other Flights			8	19	-11	71	98	4	94	67
Other PAX Charters			104	331	-227	28	11 384	58 188	-46 804	35
Pegasus Airlines	PC	PGT	720	508	212	21	150 068	95 126	54 942	20
Private Wings	PWF	PWF	214	216	-2	47	3 852	3 888	-36	65
Qanot Sharq	HH	QNT	56	0	56		11 312	0	11 312	
Qatar Airways	QR	QTR	606	434	172	22	131 232	61 632	69 600	22
Qatar Airways (CARGO)	QR	QTR	118	124	-6	58	0	0	0	68
Ryanair	FR	RZR	10 320	8 922	1 398	2	1 957 156	1 689 106	268 050	2
SalamAir	OV	OMS	0	96	-96	76	0	20 352	-20 352	68
SAS	SK	SAS	400	238	162	36	71 576	38 096	33 480	30
SCAT Airlines	DV	VSV	92	124	-32	63	17 388	23 436	-6 048	57
Smartwings	QS	TVS	17 557	16 853	704	1	3 271 982	3 095 477	176 505	1
SunExpress	XQ	SXS	470	364	106	30	88 830	68 796	20 034	25
SWISS	LX	SWR	1 680	1 302	378	10	244 508	172 822	71 686	11
Tailwind Airlines	TWI	TWI	46	252	-206	69	7 728	44 310	-36 582	63
TAP Portugal	TP	TAP	458	474	-16	31	81 504	83 064	-1 560	28
TAROM	RO	ROT	240	248	-8	42	29 796	29 418	378	46
ToMontenegro	MNE	MNE	198	146	52	49	22 968	16 936	6 032	51
Transavia	HV	TRA	282	280	2	23	53 676	54 676	-1 000	24
Transavia France	TO	TVF	318	318	0		59 508	57 968	1 540	
Turkish Airlines	TK	THY	1 264	1 216	48	14	237 100	228 874	8 226	12
Turkish Airlines (CARGO)	TK	THY	180	180	0	51	0	0	0	68
Universal Air	UVL	UVL	84	0	84		6 552	0	6 552	
UPS (CARGO)	UPS	UPS	596	620	-24	24	0	0	0	68
Uzbekistan Airways	HY	UZB	46	0	46		6 900	0	6 900	
Volotea	VOE	VOE	502	250	252	27	81 768	41 160	40 608	27
Vueling	VY	VLG	1 170	1 228	-58	16	224 344	235 680	-11 336	13
Wizz Air	W9,W6,W4	WZZ	3 712	2 814	898	5	838 460	615 120	223 340	3
World2Fly	WFL	WFL	50	0	50	67	20 604	0	20 604	53
<b>TOTAL</b>			<b>76 679</b>	<b>70 817</b>			<b>13 285 281</b>	<b>12 045 803</b>		

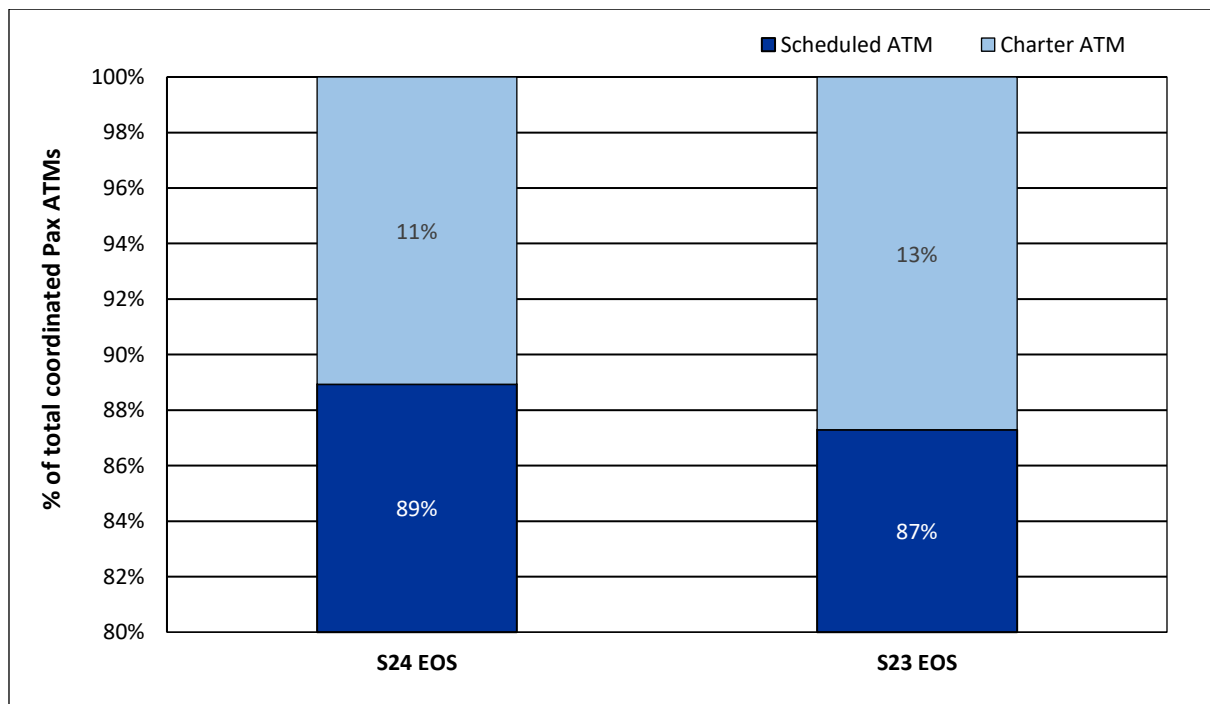


# EOS S24 Full Season - Total ATM Analysis

## Passenger ATMs vs. Cargo ATMs vs. Other ATMs vs. GA/BA

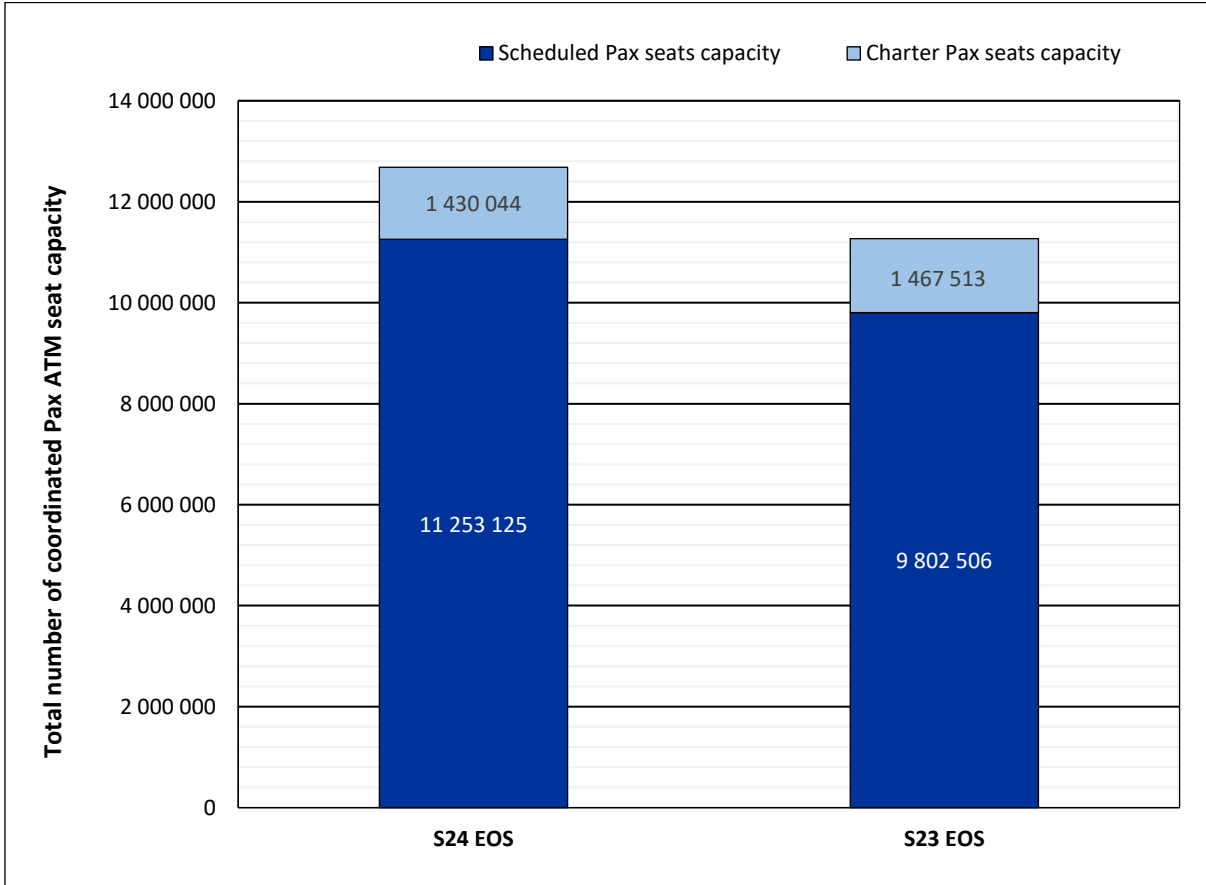


## Passenger ATMs: Scheduled vs. Charter

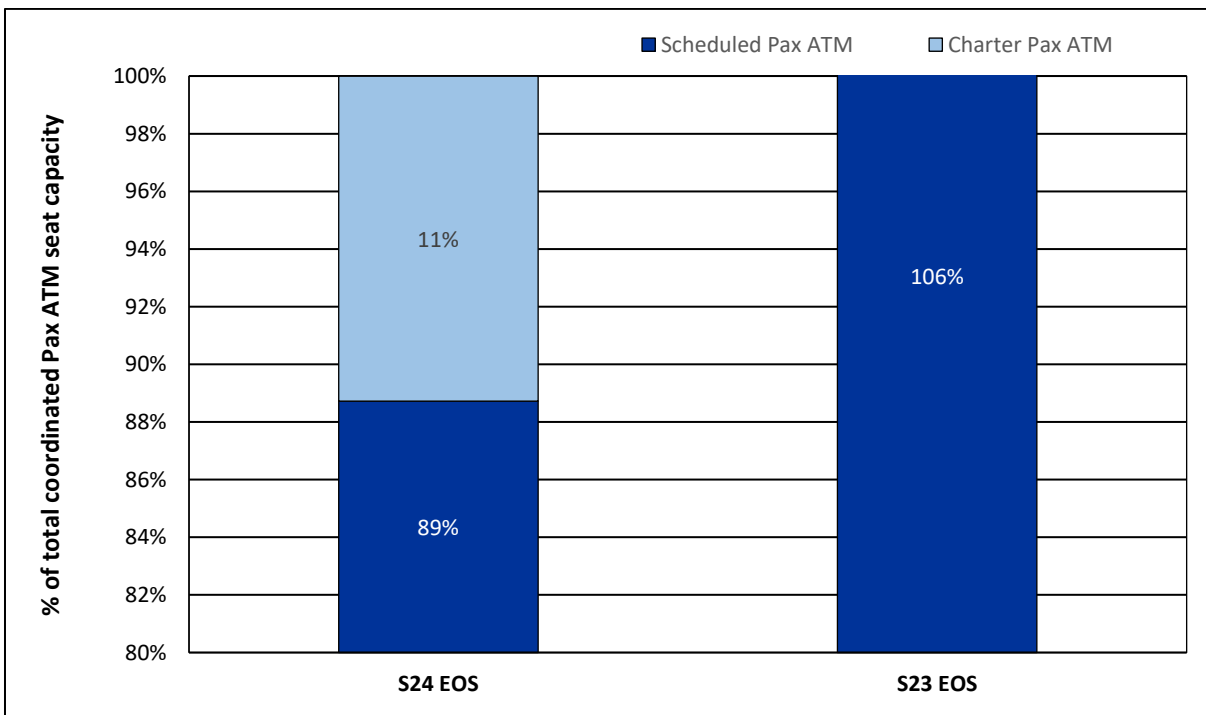


# EOS S24 Full Season - Passenger ATM Seats Capacity Analysis

## Passenger ATM seats: Scheduled vs. Charter

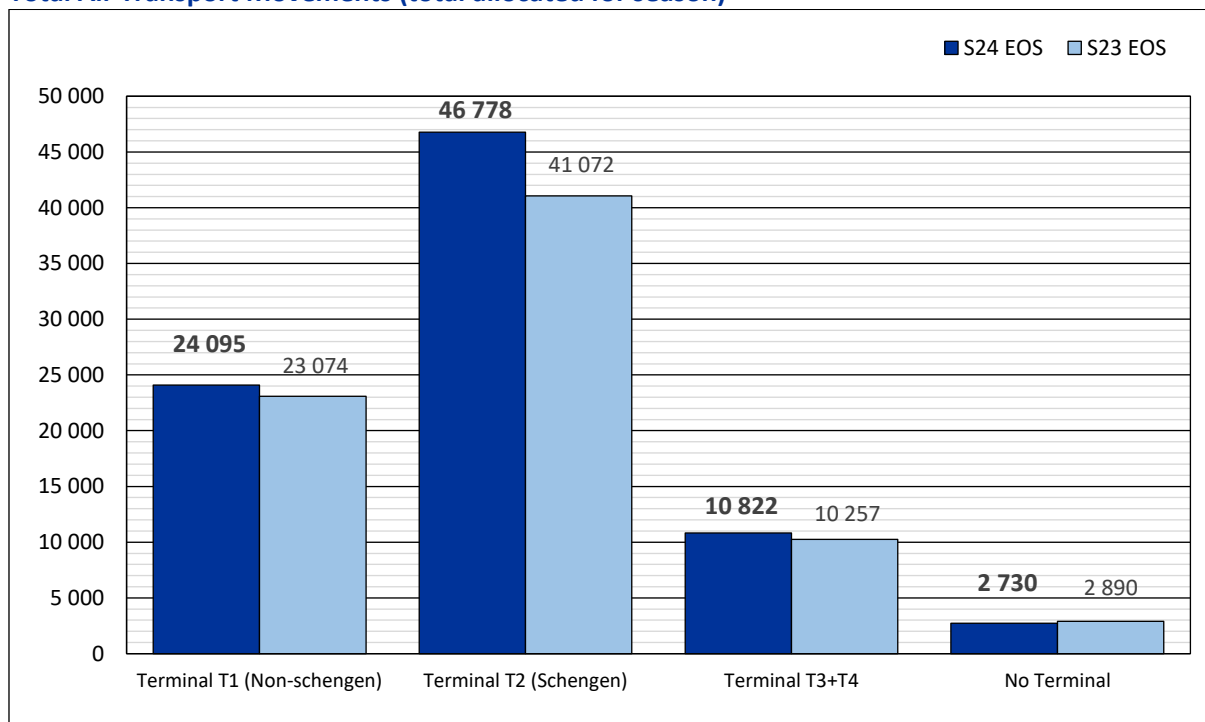


## Passenger ATM seats: Schedule vs. Charter



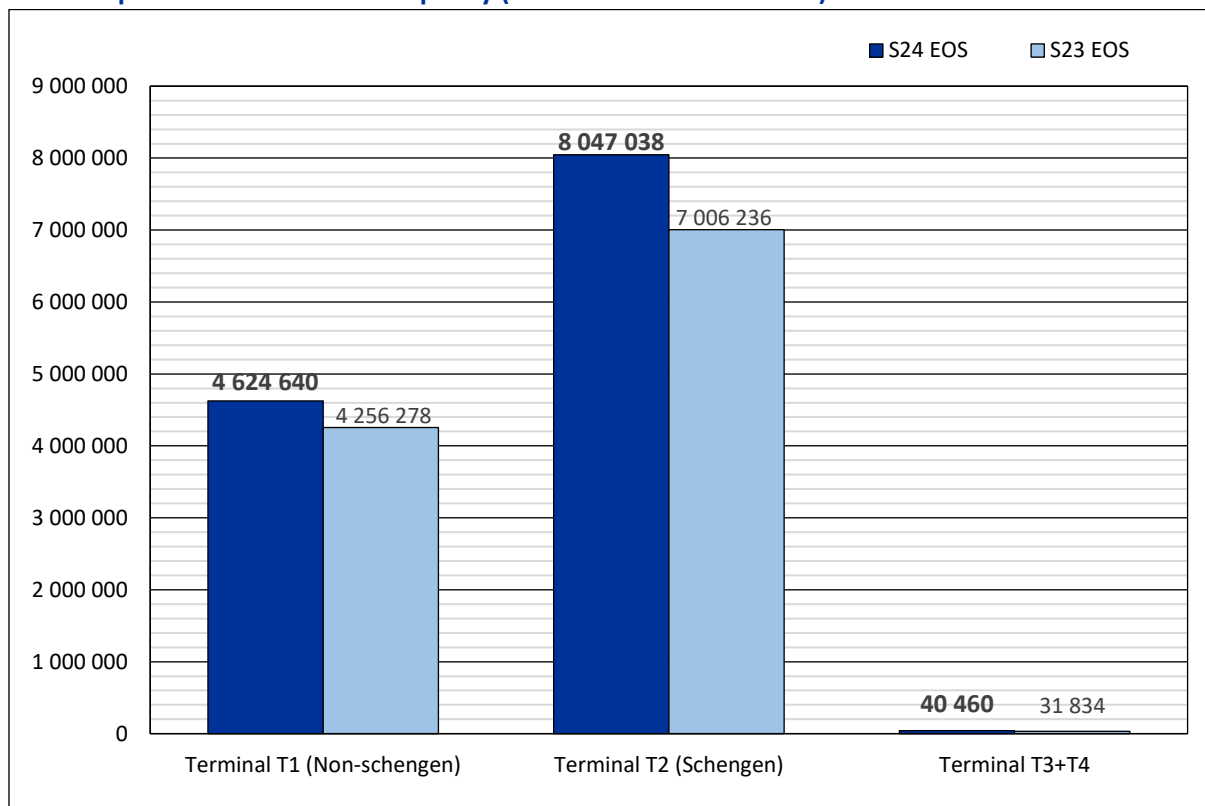
## EOS S24 Full Season - Terminal Analysis

### Total Air Transport Movements (total allocated for season)



*Note: Terminal T3 - special charter flights, special flights and GA/BA flights are included  
Terminal T4 – government, state flights*

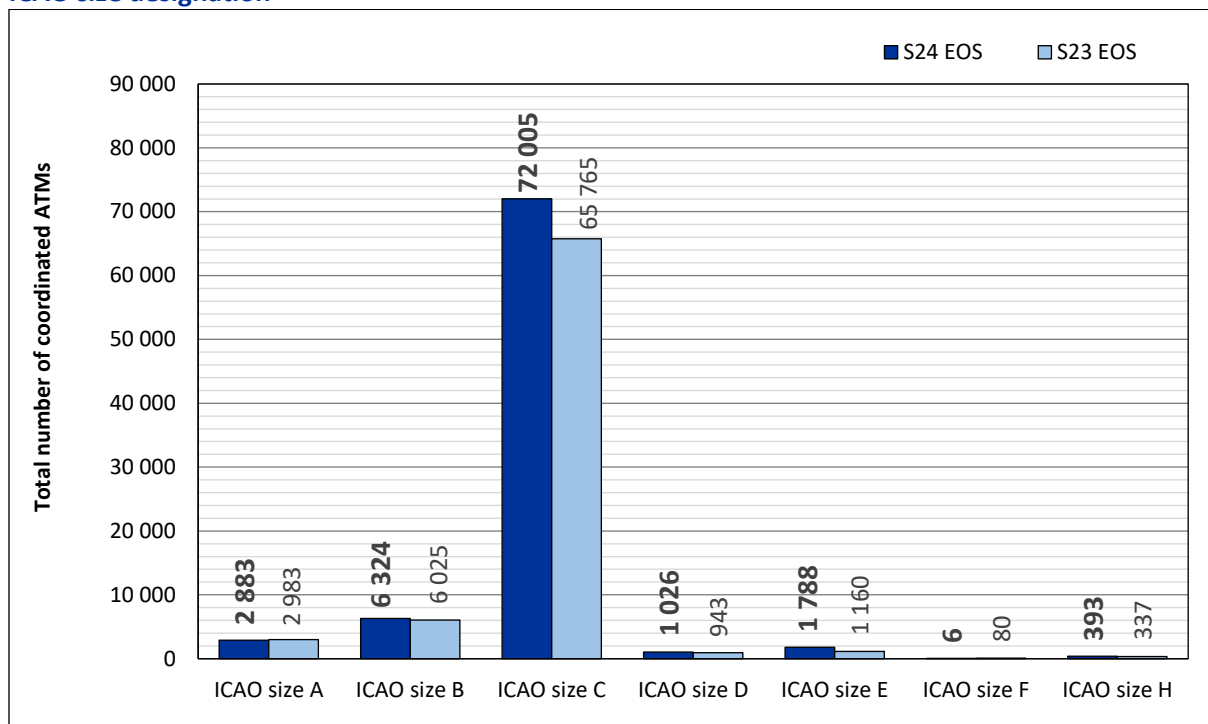
### Air Transport Movement Seats Capacity (total allocated for season)



*Note: Terminal T3 - special charter flights are included ONLY  
Terminal T4 – government, state flights*

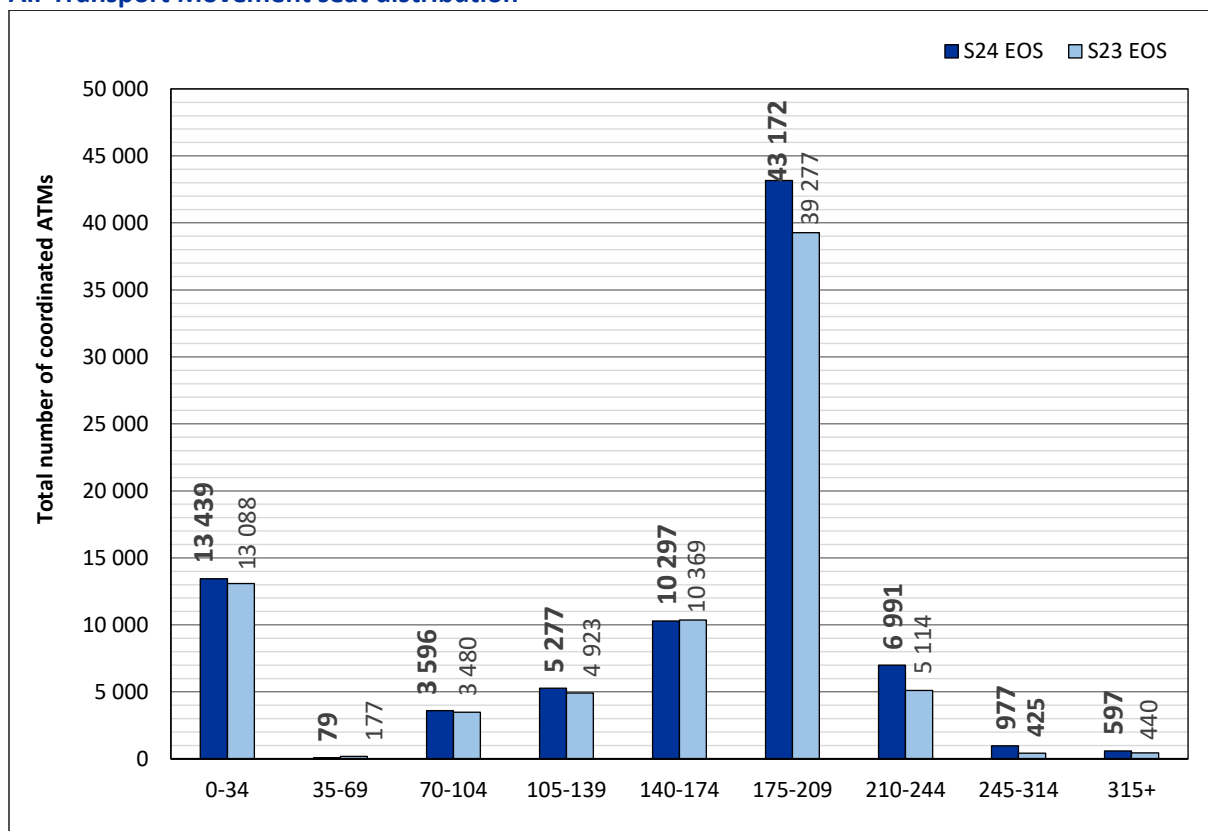
## EOS S24 Full Season - Aircraft Size Analysis

### ICAO size designation



Note: See Glossary for definitions of ICAO Size groupings

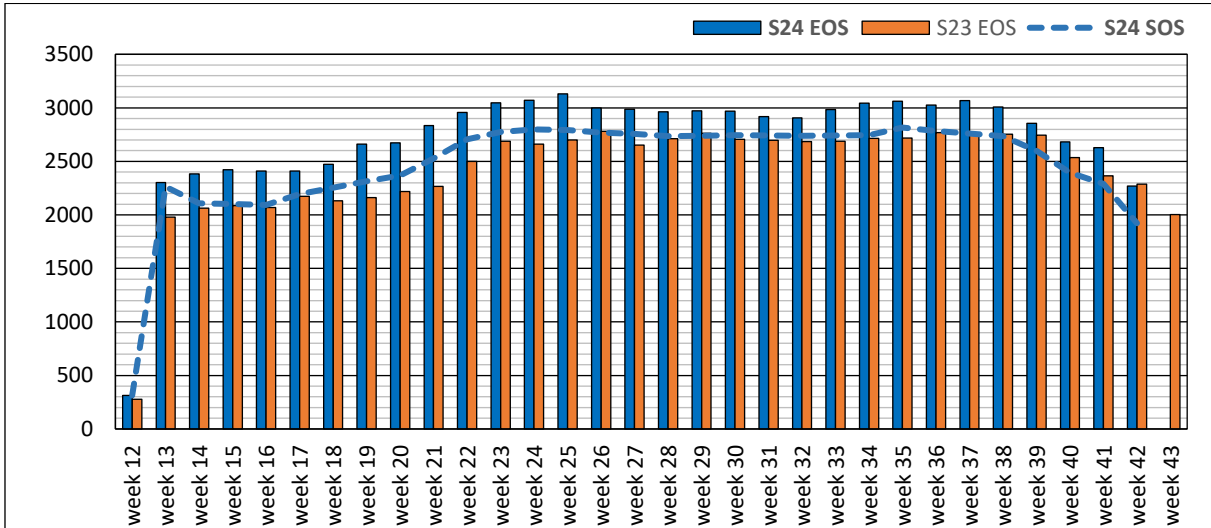
### Air Transport Movement seat distribution



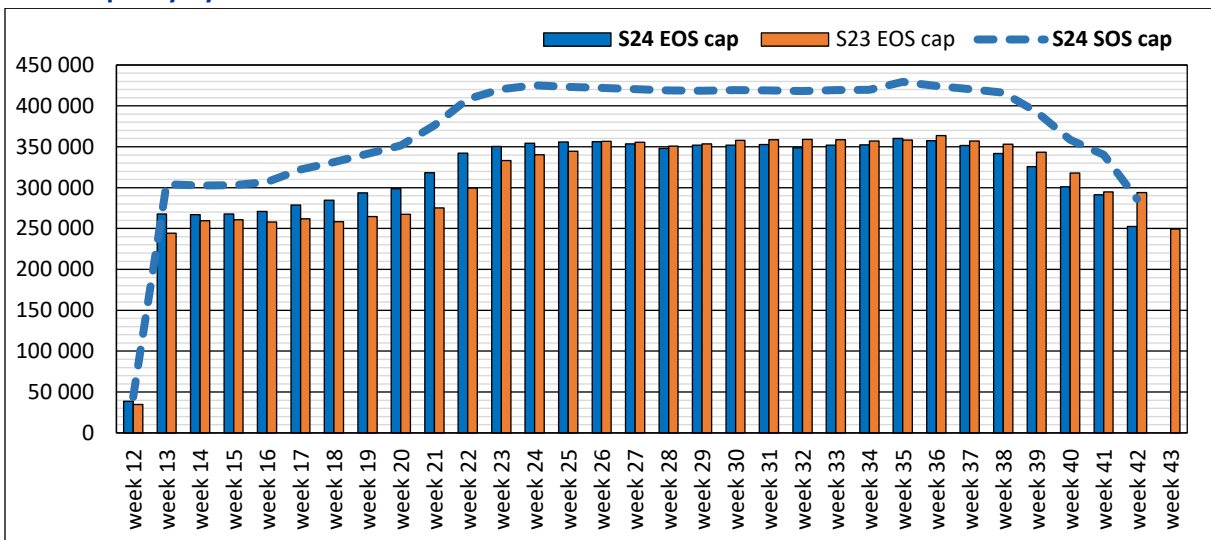
Note: Cargo services with 0 seats are included in the first seat band „0-34“

# EOS S24 Full Season - Seasonality

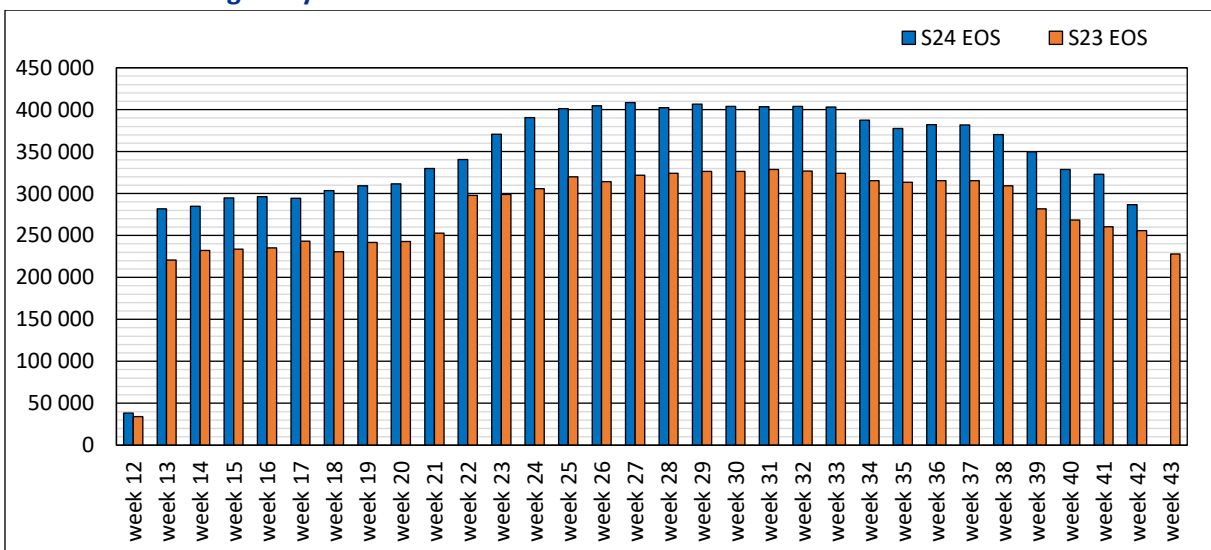
## Airport Transport Movements by week of season



## Seats Capacity by week of season

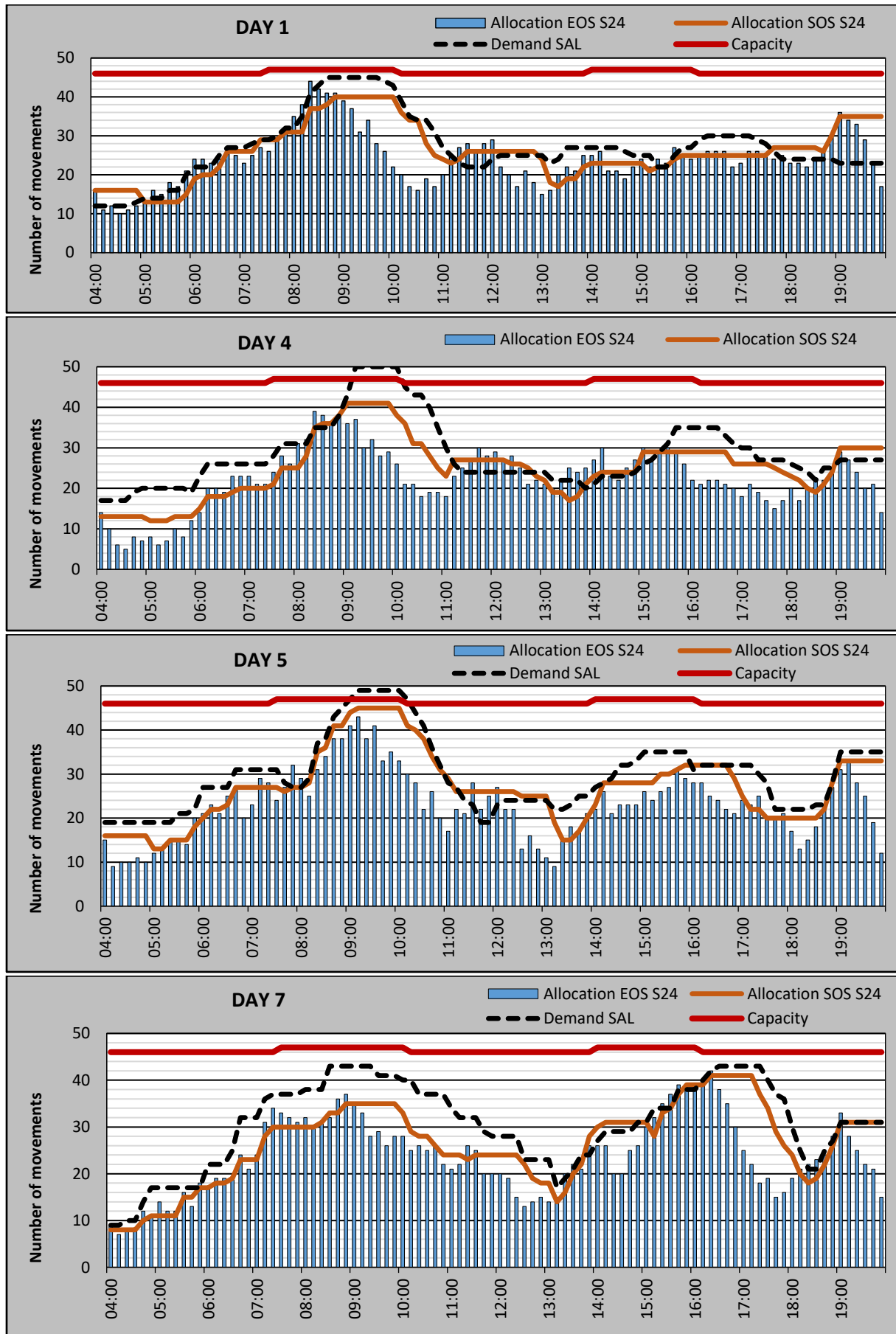


## Number of Passengers by week of season



# EOS S24 Typical Week Histogram – Runway Allocation – top days

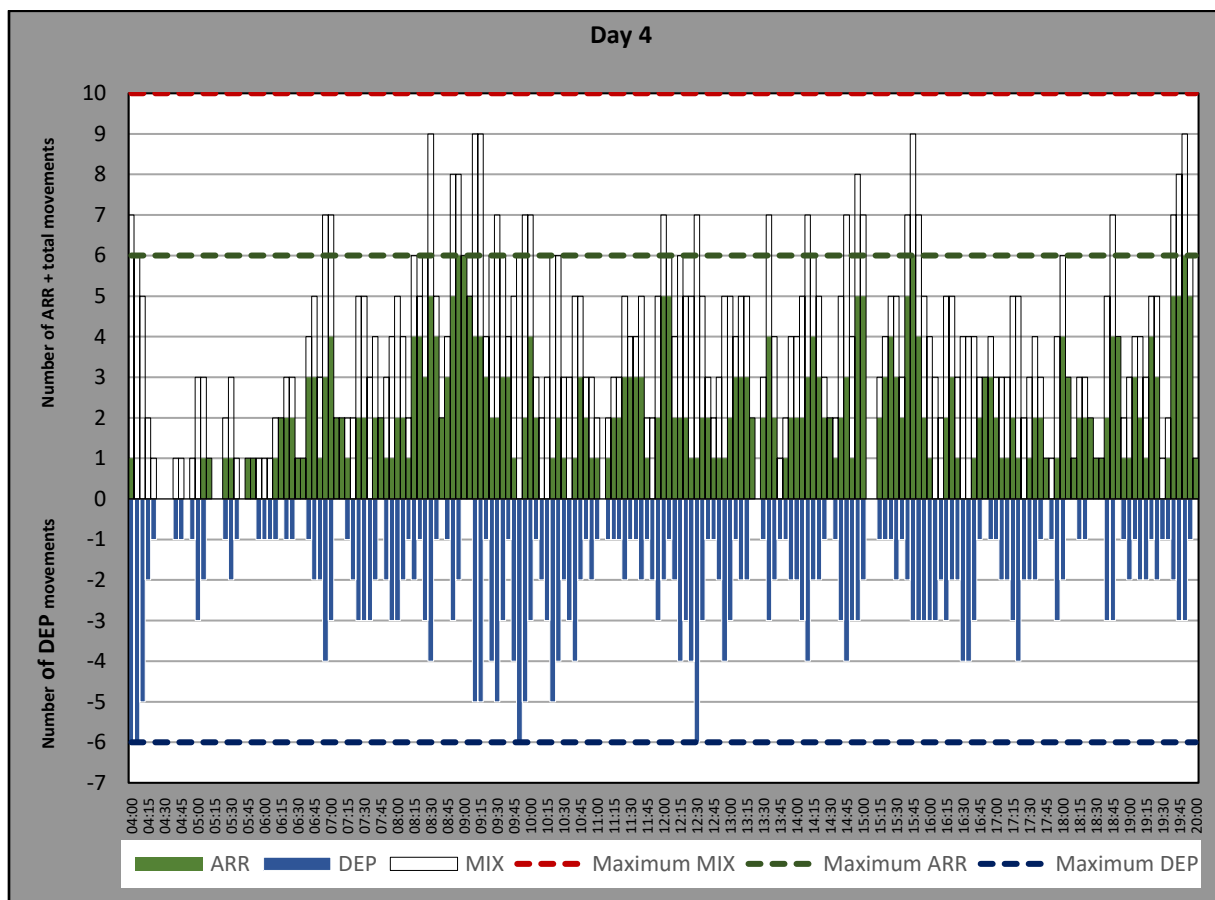
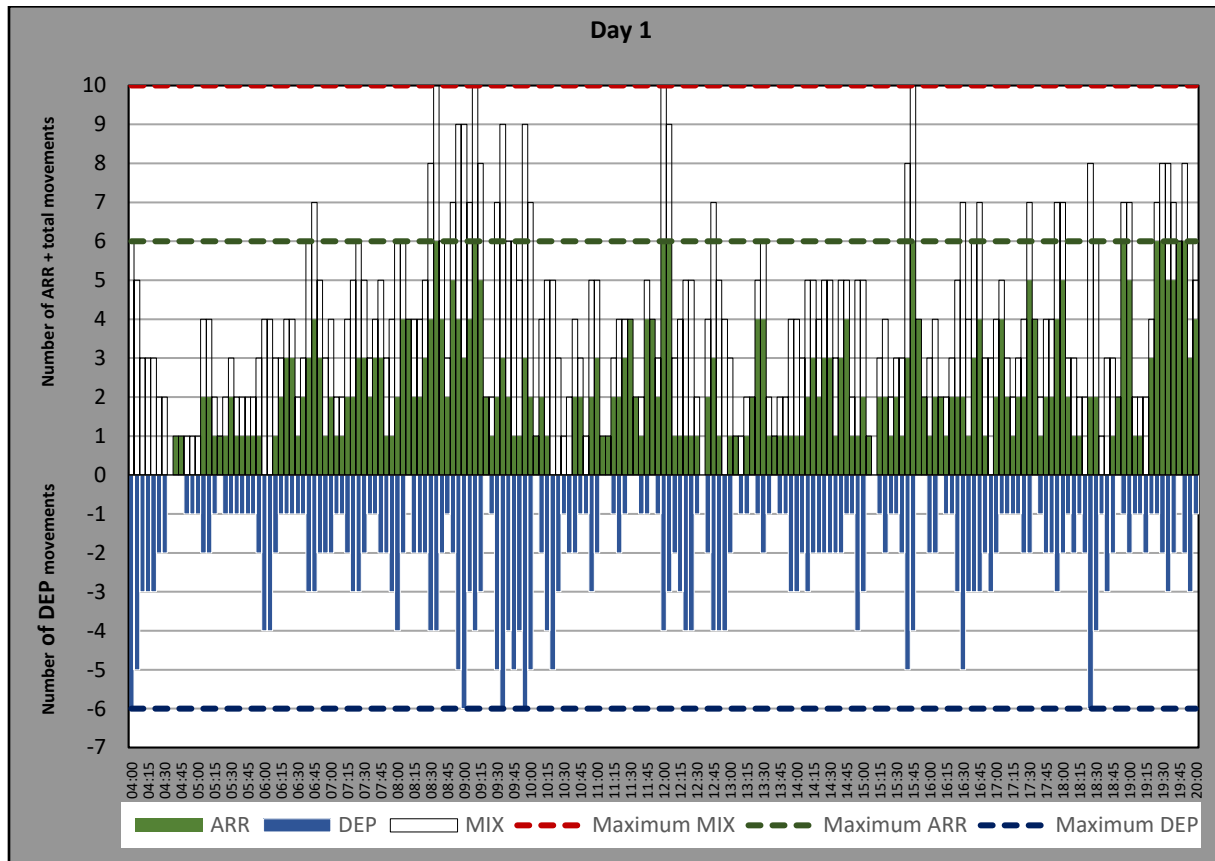
TOTAL Movements – 60 minute count rolling every 10 minutes (R60/10)





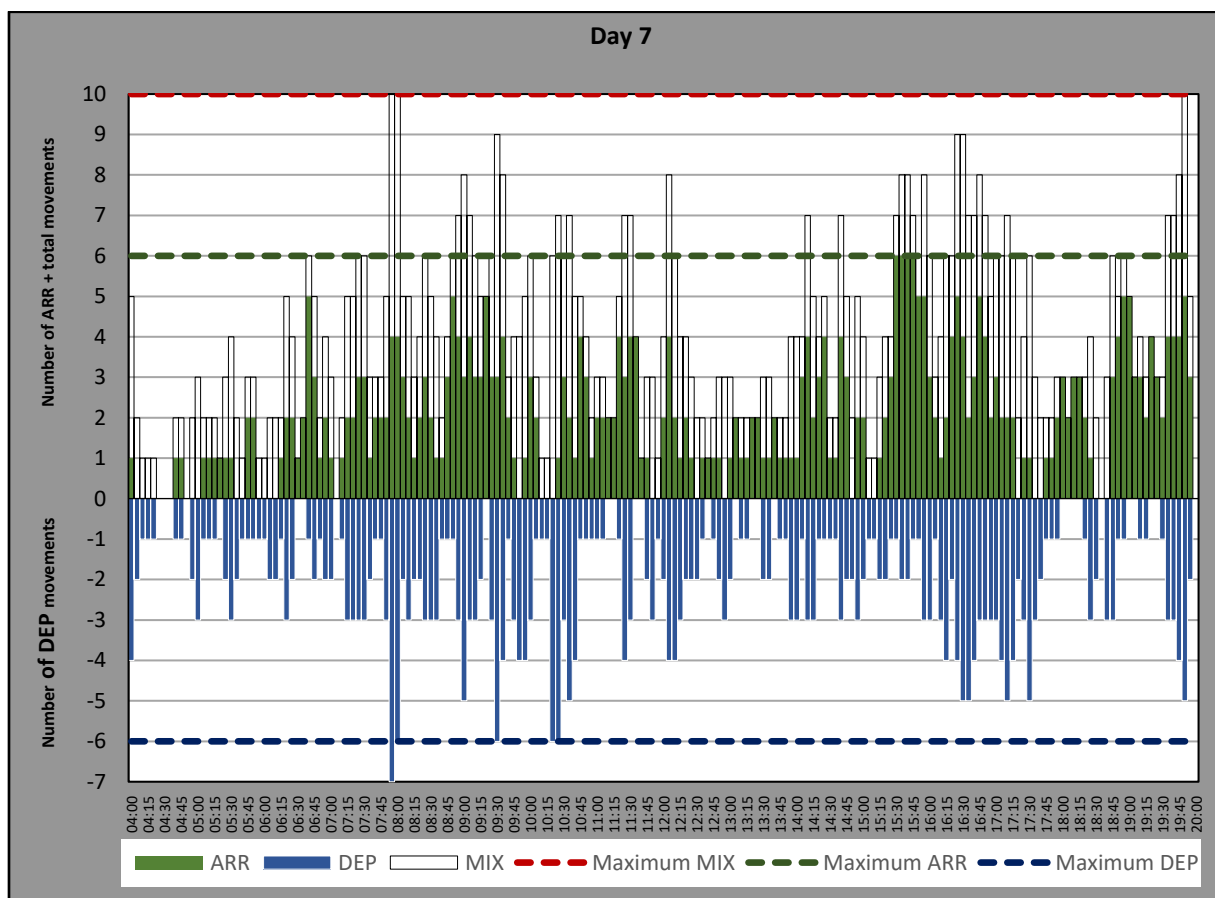
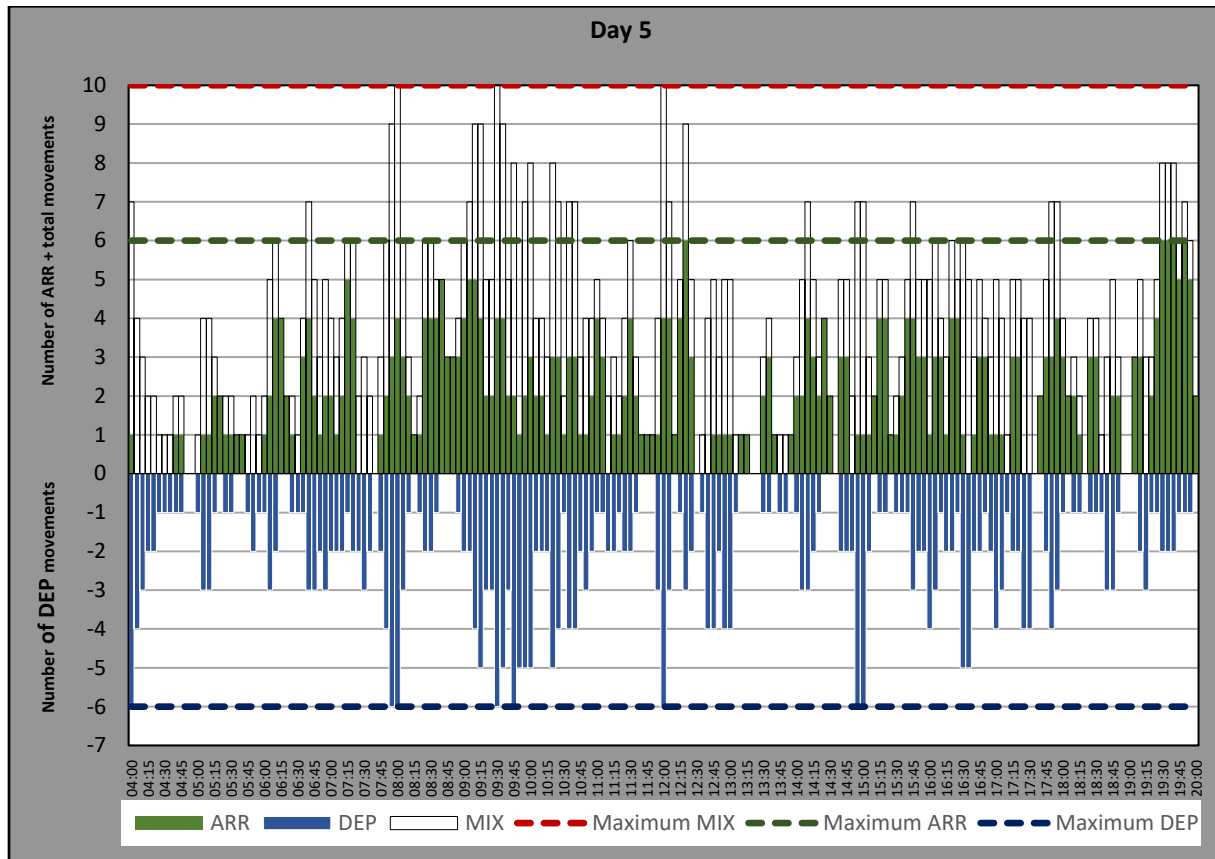
# EOS S24 Typical Week Histogram – Runway Allocation – top days

ARRIVAL + DEPARTURE + TOTAL – 10 minute count rolling every 5 minutes (R10/5)



# EOS S24 Typical Week Histogram – Runway Allocation – top days

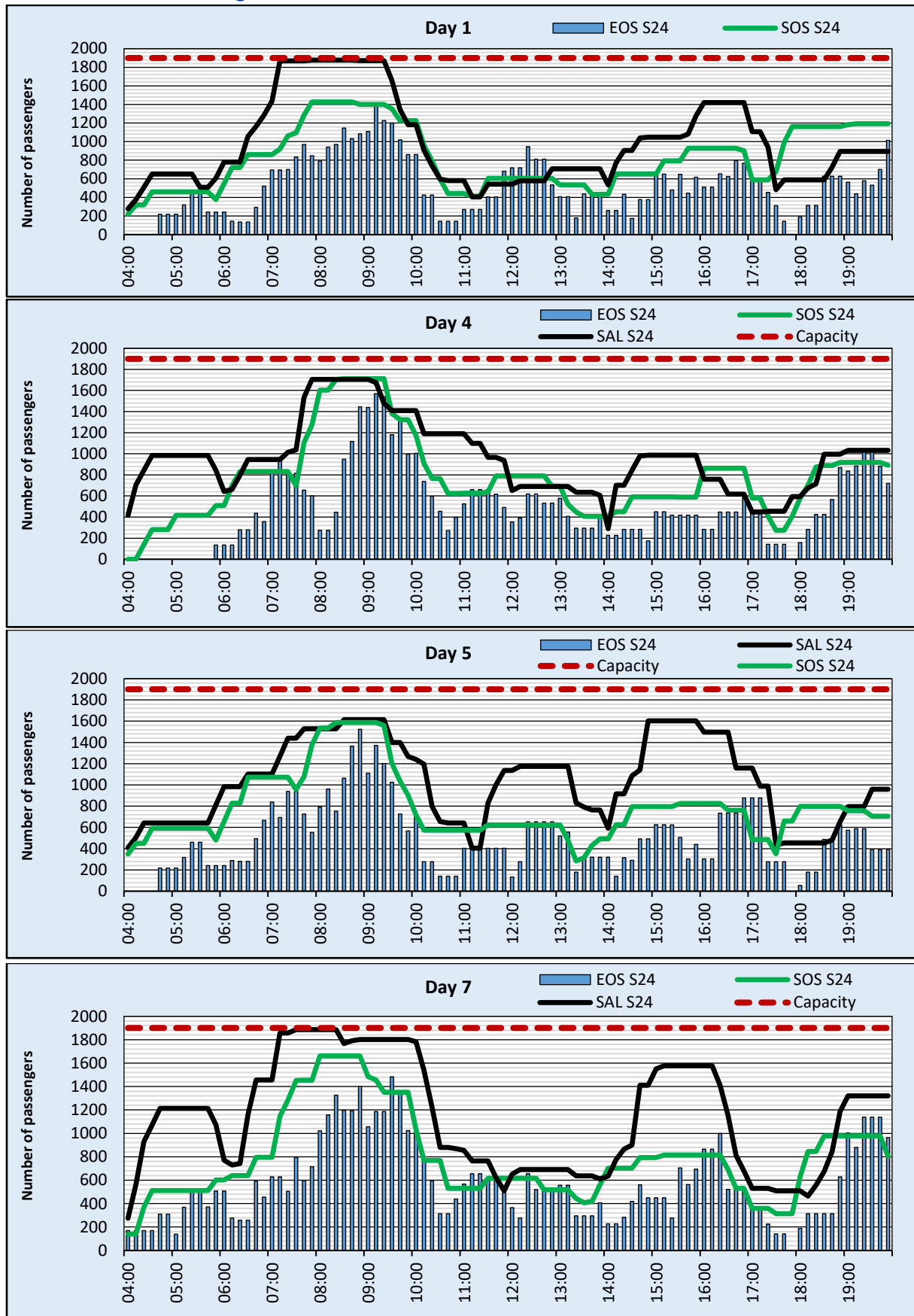
ARRIVAL + DEPARTURE + TOTAL – 10 minute count rolling every 5 minutes (R10/5)



# EOS S24 Typical Week Histogram – Passengers – top days

ARRIVAL – 60 minute count rolling every 10 minutes (T60/10)

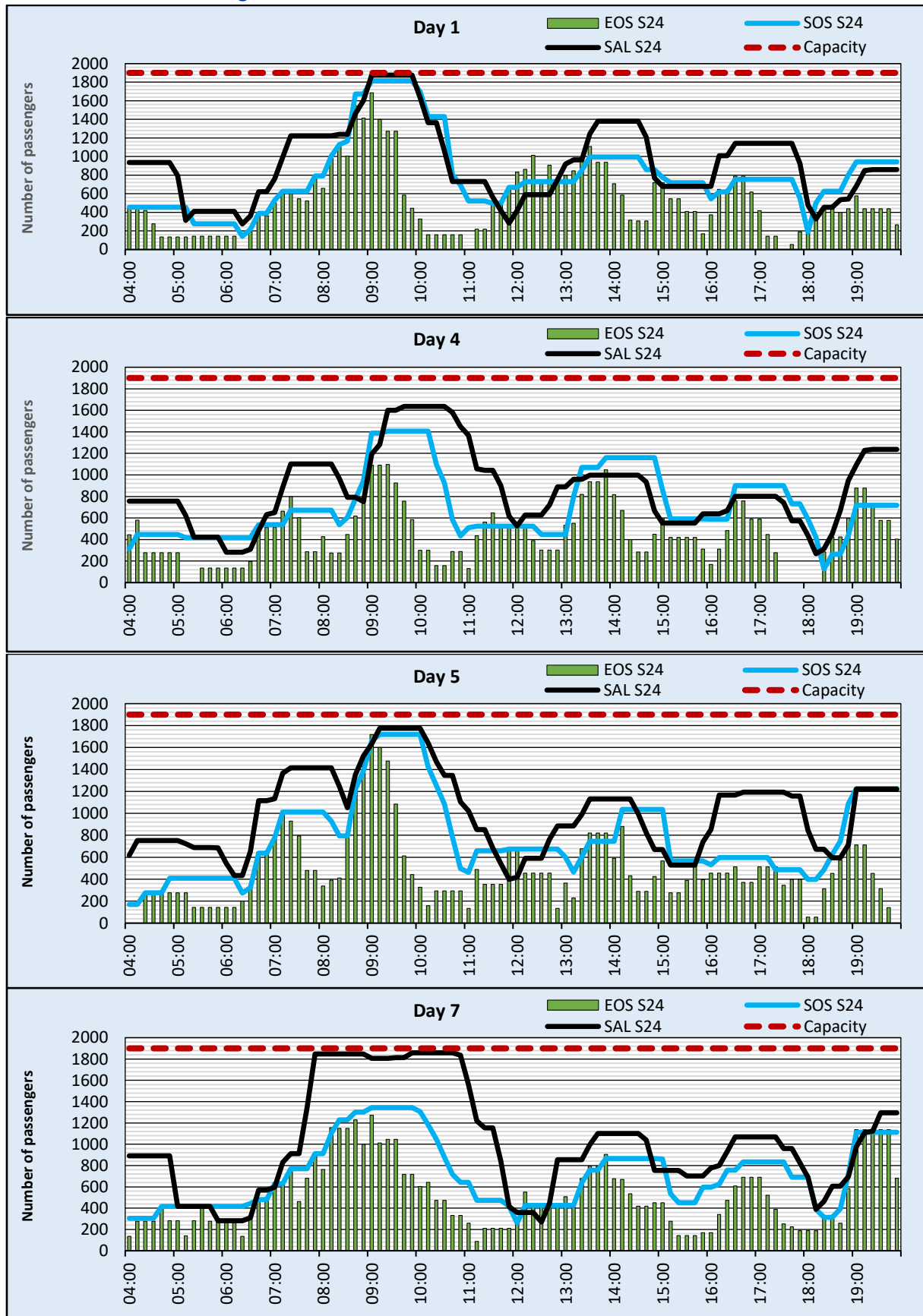
## Terminal T1 – Non-Schengen



# EOS S24 Typical Week Histogram – Passengers - top days

DEPARTURE – 60 minute count rolling every 10 minutes (T60/10)

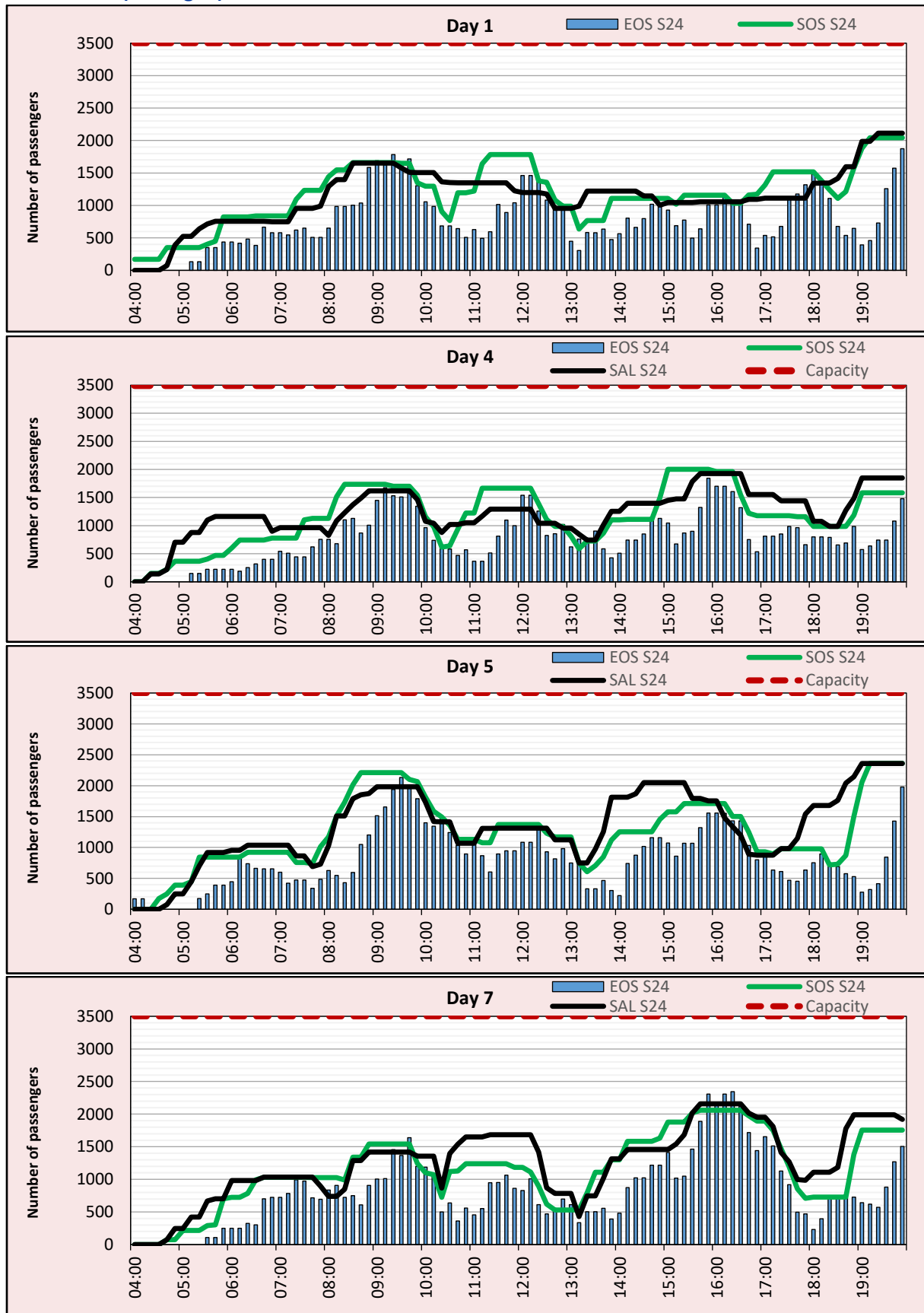
## Terminal T1 – Non-Schengen



# EOS S24 Typical Week Histogram – Passengers – top days

ARRIVAL – 60 minute count rolling every 10 minutes (T60/10)

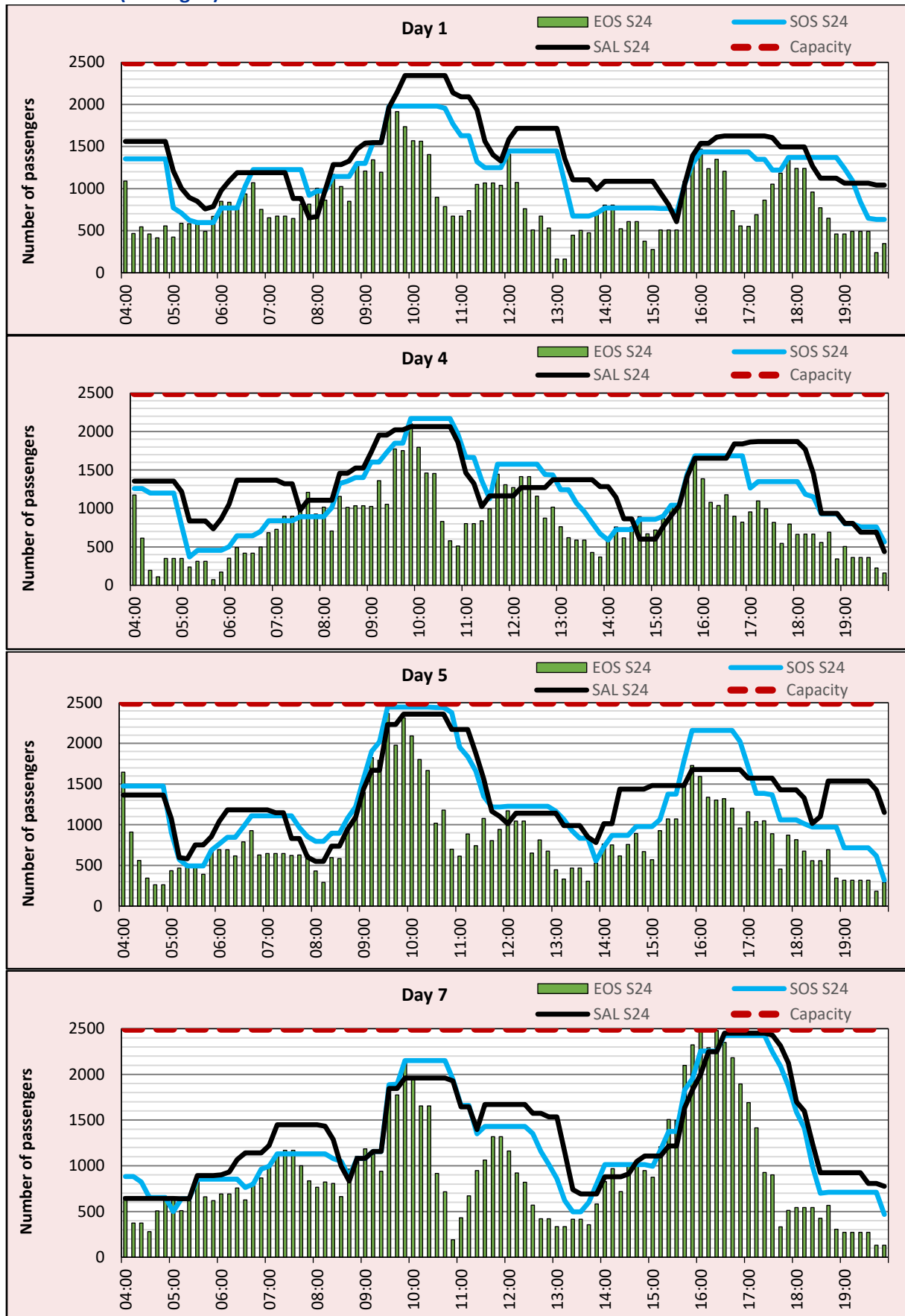
## Terminal T2 (Schengen)



# EOS S24 Typical Week Histogram – Passengers – top days

DEPARTURE – 60 minute count rolling every 10 minutes (T60/10)

## Terminal T2 (Schengen)



## Glossary

---

<b>Air Transport Movement (ATM)</b>	Any aircraft movement which is either a scheduled, chartered passenger or cargo flight (IATA service type codes J, G, C, F, H, A).
<b>Cargo Transport Movements (CATM)</b>	Any aircraft movement which is either a scheduled or chartered or additional cargo flight (IATA service type codes F, H, A)
<b>Demand</b>	Unconstrained demand before any schedule adjustments have been made
<b>GA/BA flights</b>	General aviation and business aviation flights (service type codes D, N, U)
<b>End of Season (EOS)</b>	Snapshot of schedule shortly after the end of the scheduling season (exact date given where used).
<b>Historical slots (SHL)</b>	Snapshot of historic schedule obtained from the previous equivalent season - as advised to airlines in the SHLs.
<b>IATA Slot Conference (SC)</b>	Snapshot after the end of the IATA Slot Conference
<b>ICAO Size A</b>	Aircraft with wingspan between 0.00m - 14.99m.
<b>ICAO Size B</b>	Aircraft with wingspan between 15.00m - 23.99m.
<b>ICAO Size C</b>	Aircraft with wingspan between 24.00m - 35.99m.
<b>ICAO Size D</b>	Aircraft with wingspan between 36.00m - 51.99m.
<b>ICAO Size E</b>	Aircraft with wingspan between 52.00m - 64.99m.
<b>ICAO Size F</b>	Aircraft with wingspan between 65.00m - 80.00m.
<b>ICAO Size H</b>	Helicopters
<b>Initial Coordination (SAL)</b>	Snapshot of schedule immediately after Initial Coordination is completed - as advised to airlines in the SALs.
<b>Passenger Air Transport Movement (PATM)</b>	Any aircraft movement, which is either a scheduled or chartered passenger flight (service type codes J, G, C).
<b>Other Air Transport Movement (OATM)</b>	Any aircraft movement, which is not either a scheduled, chartered passenger, GA/BA or cargo flight (service type codes E, I, K, L, O, P, T, W, X, Y)
<b>Start of Season (SOS)</b>	Snapshot of schedule shortly before the start of the scheduling season (exact date given below where used).
<b>Time: UTC</b>	Times shown are in Universal Time Constant (UTC).
<b>Total Air Transport Movements (TATM)</b>	Completely all aircraft movements in a given season including flights GA/BA (all IATA service type codes)
<b>Typical week</b>	Typical week for S24 is Mon 05AUG 2024 to Sun 11AUG 2024 Typical week for S23 is Mon 07AUG 2023 to Sun 13AUG 2023
<b><u>Data snapshot descriptions</u></b>	
<b>S23 EOS</b>	S23 schedule as cleared on 04NOV 2023
<b>S24 SAL</b>	S24 schedule as cleared on 13OCT 2023
<b>S24 SOS</b>	S24 schedule as cleared on 31MAR 2024
<b>S24 EOS</b>	S24 schedule as cleared on 29OCT 2024

## Slot mobility

No transfers or exchanges under Art. 10.8. within S24 season.

## Monitoring report

<b>Slot misuse</b>	- no records for S24 season.
<b>Late handback</b>	- no records for S24 season.
<b>Sanctions</b>	- no records for S24 season.
<b>Exemptions 14.1</b>	- no records for S24 season.

Minor violation of the slot policy resulted only in warning given to the air carrier.

## Coordination committee

The Coordination Committee has been established to advise and assist to the coordinator to carry out the following tasks in accordance with the requirements of the Law No. 49/1997 issued by the Ministry of Transport of the Czech Republic.

Function:

- examine the possibilities to increase the currently determined capacity of the airport,
- determine the ways of achieving a better utilisation of the capacity available,
- monitoring of the usage of the slots allocated.

**The list of members :**

Airline Operators Committee (AOC)  
Air Traffic Control  
Airport Prague  
Smartwings  
Ryanair  
ABS Jets  
Menzies Aviation  
Czech Airlines Handling  
Czech GH  
Civil Aviation Dept. (as observer)  
Civil Aviation Authority (as observer)  
Slot Coordination Czech Republic (as observer)

Main topic for the meeting of the Coordination Committee was the airport capacity presentation for S24 season. Offered capacities were approved by all the members.



## Conclusion

This report provides the requested information and statistics for Vaclav Havel Airport Prague (PRG/LKPR) for season S24. It has been created by Slot Coordination Czech Republic for the next possible usage by DG Move.

Should you require more Information, do not hesitate to contact us at:

**Slot Coordination Czech Republic**

Aviatická 1017/2

Airport Prague

161 00 Prague 6 - Ruzyně

e-mail: [slot.coord@prg.aero](mailto:slot.coord@prg.aero)

WEB: [www.slot-czech.cz](http://www.slot-czech.cz)